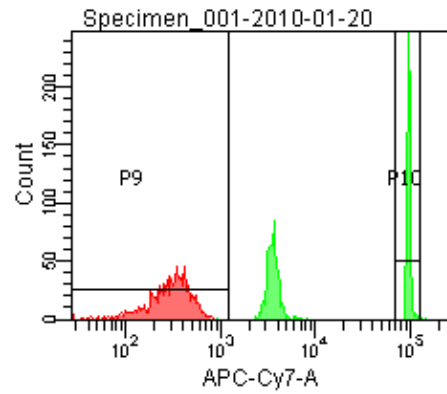
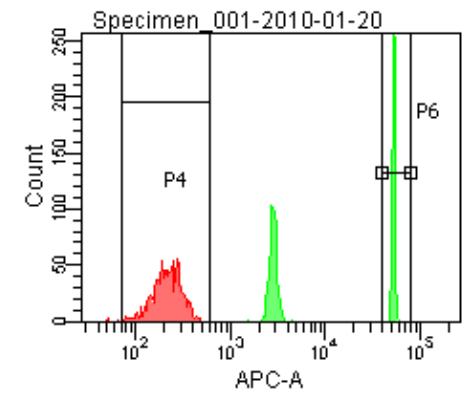
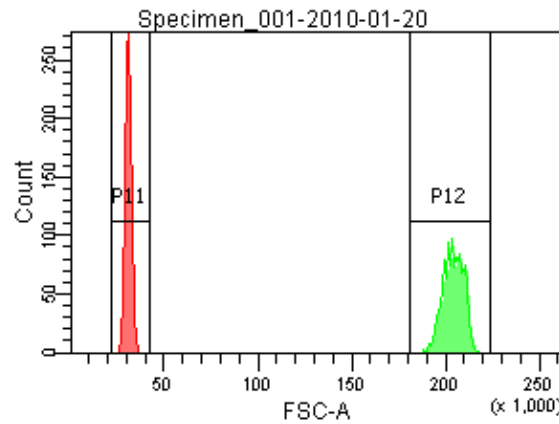
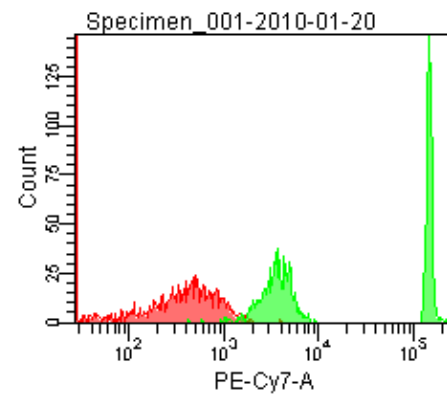
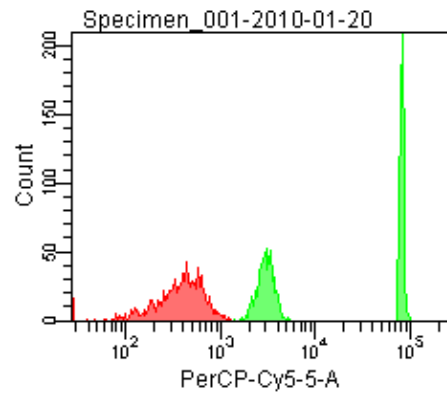


Population	FITC-A %CV	APC-A %CV
P5	1.9	2.5
P6	1.9	2.5



Population	FSC-A %CV
P1	5.1
P2	2.5

Population	FITC-A Mean	PE-APE-Texas R... Mean	PerCP-Cy5-... Mean	PE-Cy7-A Mean	APC-A Mean	APC-Cy7-A Mean
P6	37,998	34,421	36,486	150,678	53,478	98,885