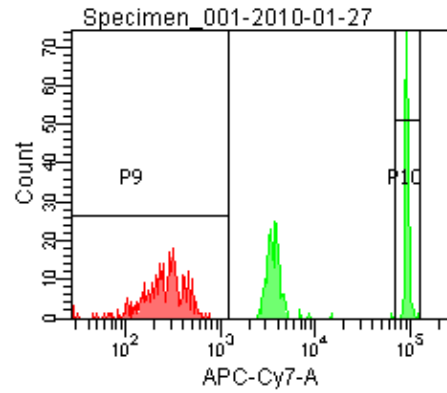
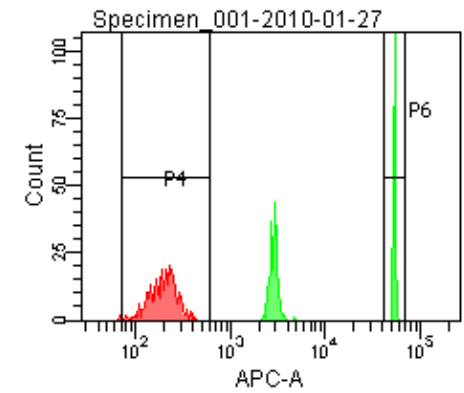
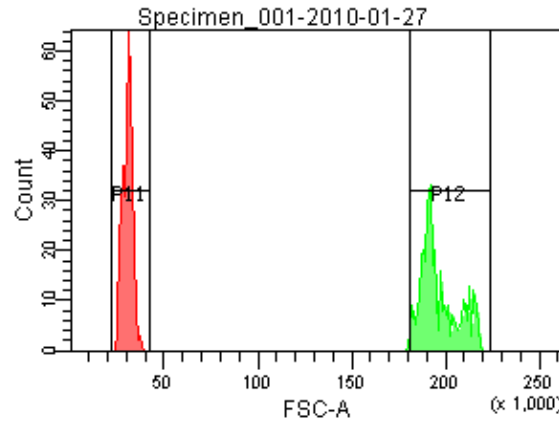
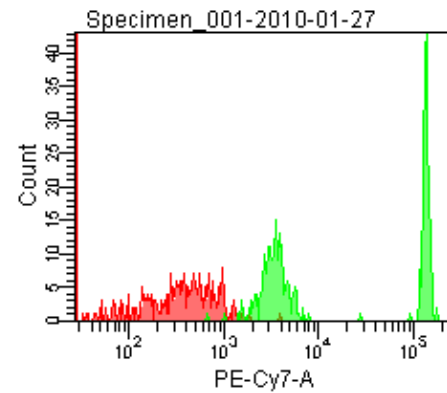
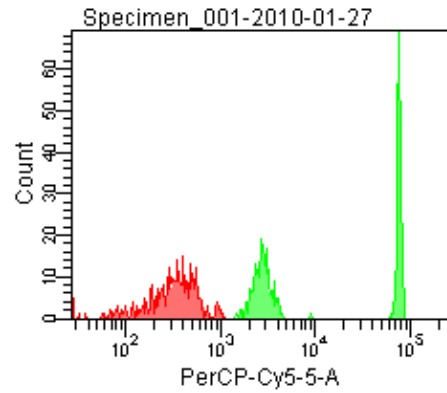


Population	FITC-A %CV	APC-A %CV
P5	2.2	2.3
P6	2.2	2.3



Population	FSC-A %CV
P1	8.7
P2	5.1

Population	FITC-A Mean	PE-A Mean	PE-Texas ... Mean	PerCP-Cy... Mean	PE-Cy7-A Mean	APC-A Mean	APC-Cy7-A Mean
P6	37,834	33,988	35,427	77,655	138,402	54,246	93,966