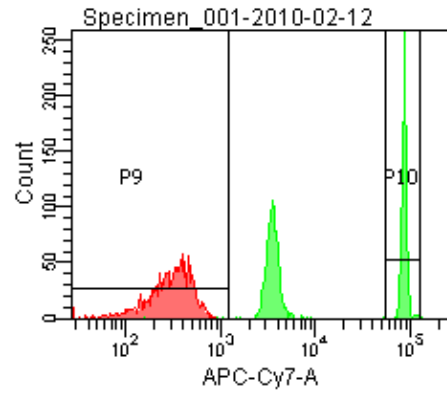
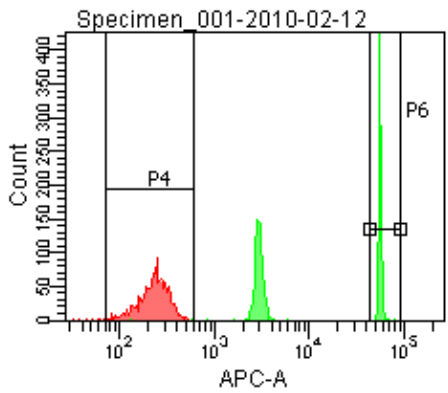
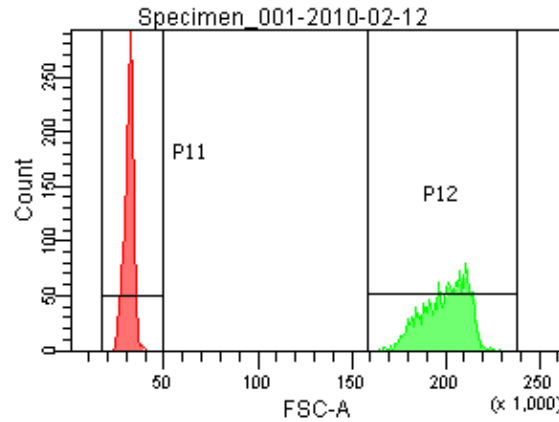
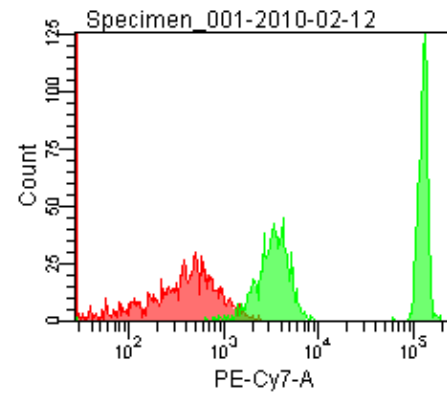
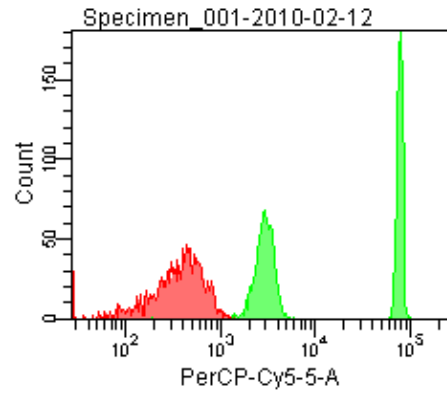


Population	FITC-A %CV	APC-A %CV
P5	4.9	3.2
P6	5.2	3.5



Population	FSC-A %CV
P1	8.0
P2	5.7

Population	FITC-A Mean	PE-A Mean	PE-Texas ... Mean	PerCP-Cy... Mean	PE-Cy7-A Mean	APC-A Mean	APC-Cy7-A Mean
P6	38,174	34,226	36,654	79,349	129,410	56,449	88,588