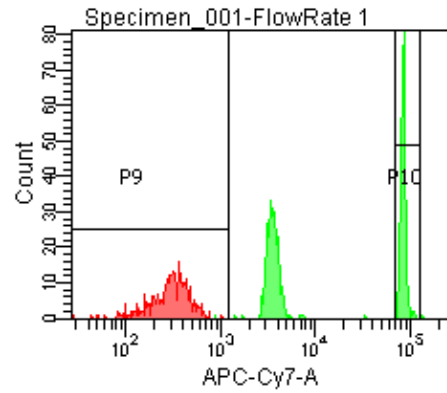
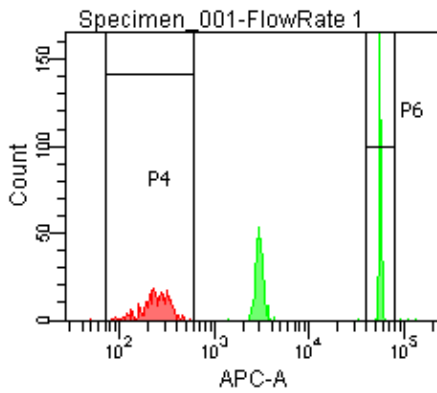
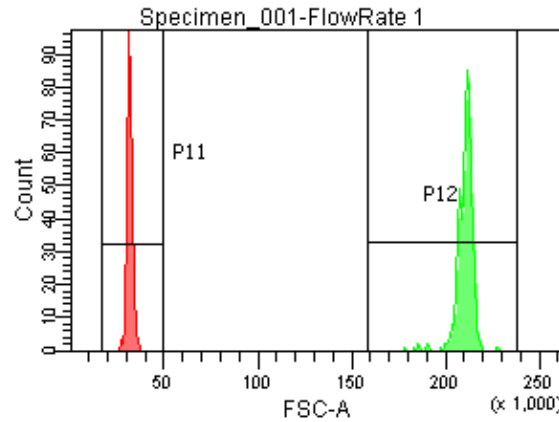
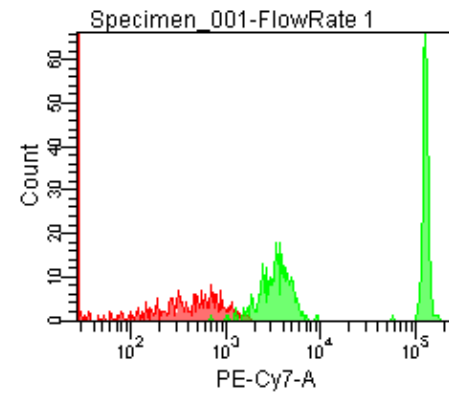
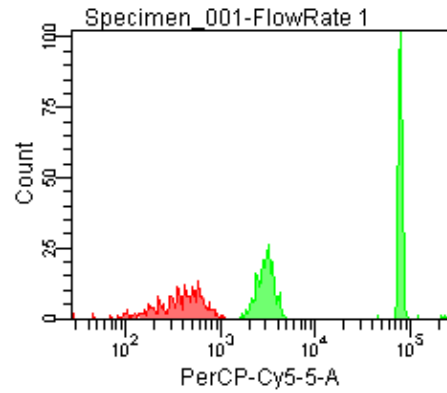


Population	FITC-A %CV	APC-A %CV
P5	2.4	6.5
P6	1.9	2.3



Population	FSC-A %CV
P1	4.7
P2	2.2

Population	FITC-A Mean	PE-A Mean	PE-Texas ... Mean	PerCP-Cy... Mean	PE-Cy7-A Mean	APC-A Mean	APC-Cy7-A Mean
P6	39,811	35,567	37,764	80,566	130,141	56,648	86,370