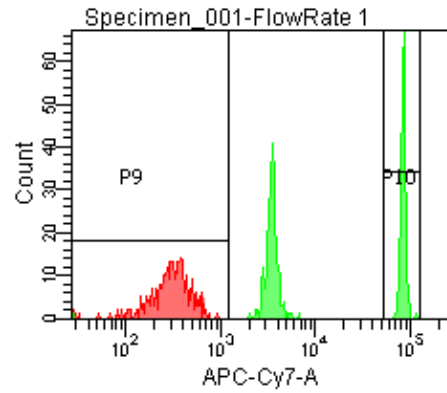
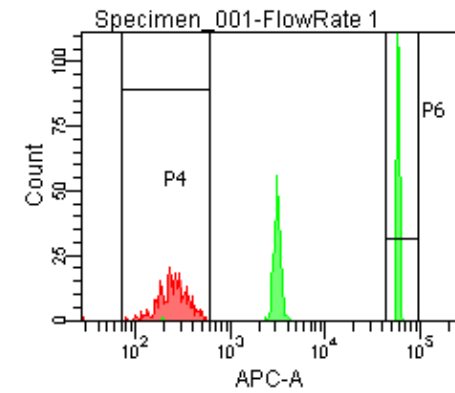
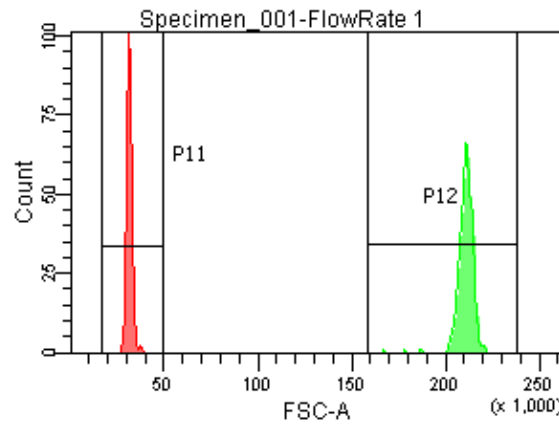
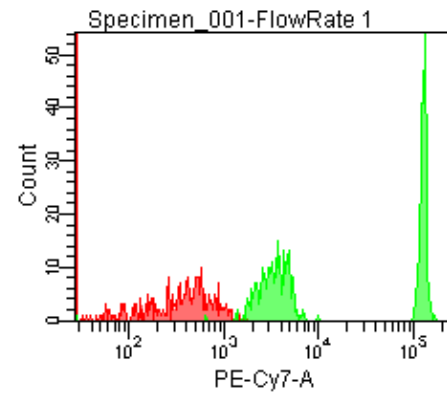
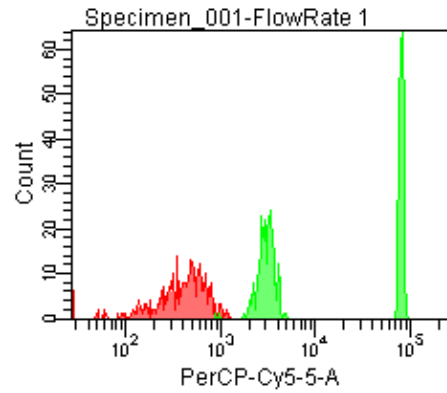


Population	FITC-A %CV	APC-A %CV
P5	1.8	2.2
P6	1.8	2.2



Population	FSC-A %CV
P1	4.6
P2	2.1

Population	FITC-A Mean	PE-A Mean	PE-Texas ... Mean	PerCP-Cy5... Mean	PE-Cy7-A Mean	APC-A Mean	APC-Cy7-A Mean
P6	40,692	36,435	38,407	82,460	129,507	59,516	86,440