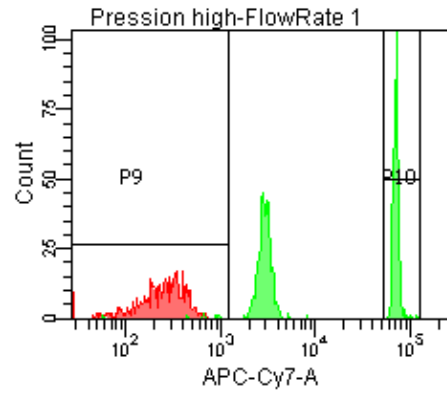
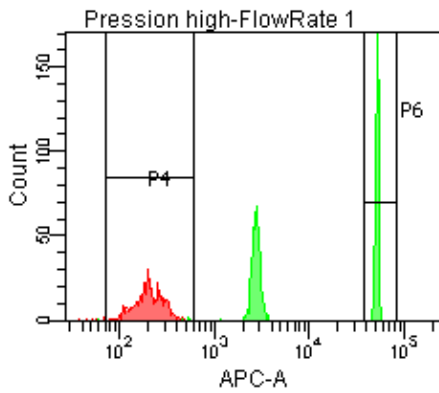
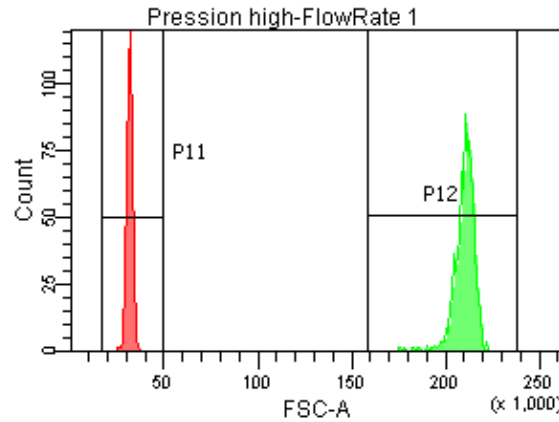
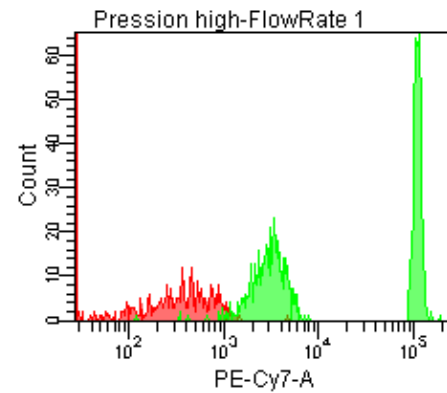
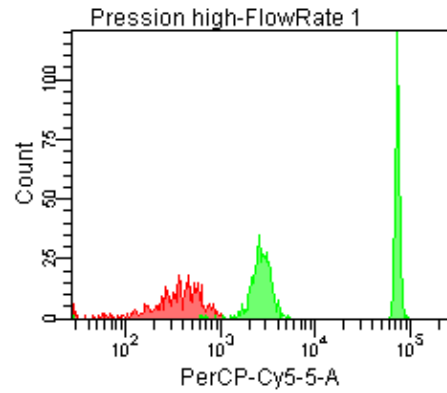


Population	FITC-A %CV	APC-A %CV
P5	2.3	3.2
P6	2.3	3.2



Population	FSC-A %CV
P1	4.8
P2	2.6

Population	FITC-A Mean	PE-A Mean	PE-Texas R... Mean	PerCP-Cy5-... Mean	PE-Cy7-A Mean	APC-A Mean	APC-Cy7-A Mean
P6	38,918	34,835	36,502	74,882	112,859	52,761	72,392