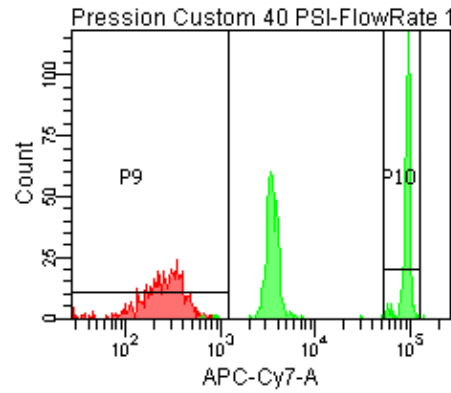
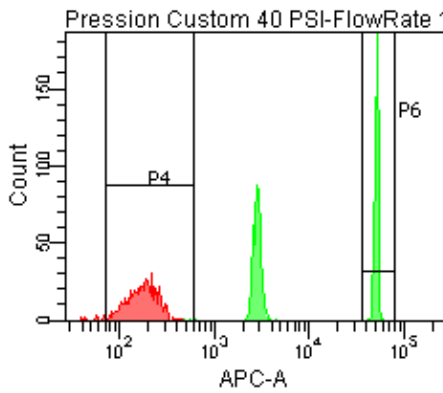
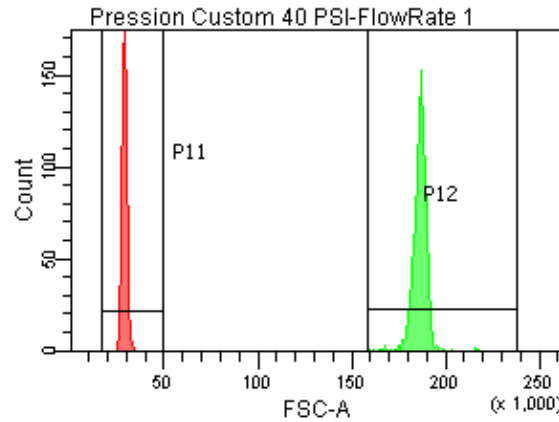
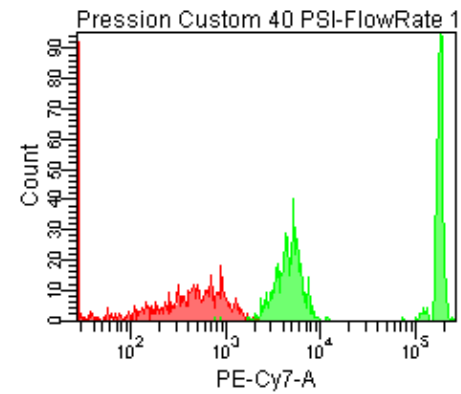
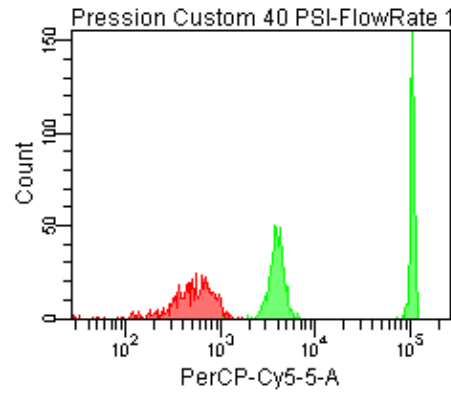


Population	FITC-A %CV	APC-A %CV
P5	2.5	3.9
P6	2.5	3.9



Population	FSC-A %CV
P1	4.4
P2	2.3

Population	FITC-A Mean	PE-A Mean	PE-Texas ... Mean	PerCP-Cy... Mean	PE-Cy7-A Mean	APC-A Mean	APC-Cy7-A Mean
P6	51,985	47,323	49,304	107,015	183,842	52,034	94,124