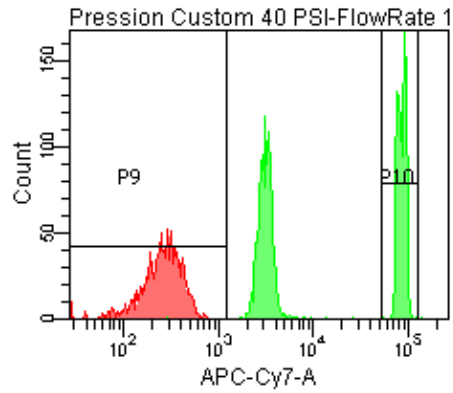
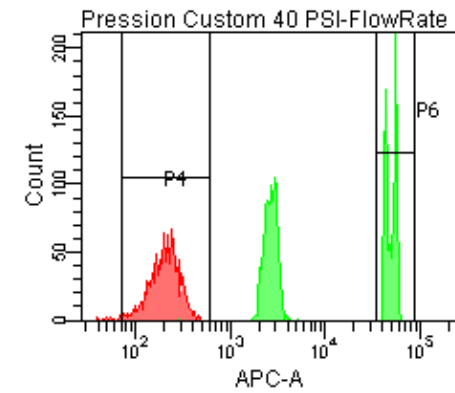
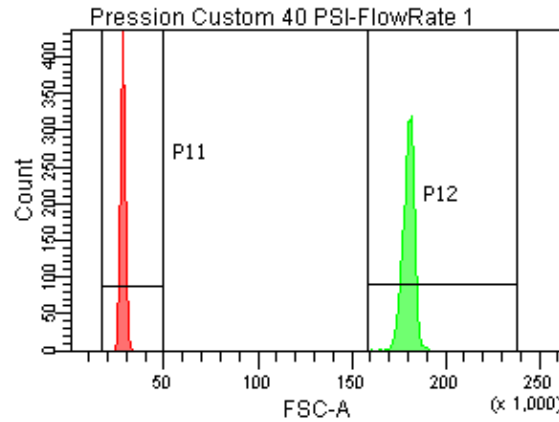
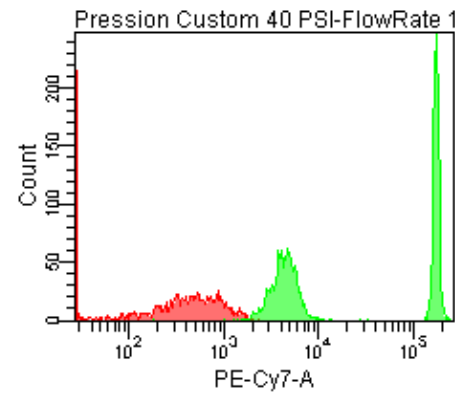
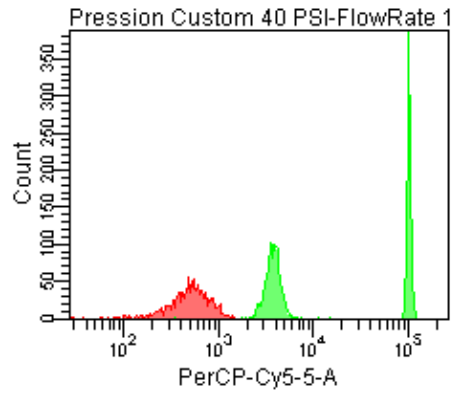


Population	FITC-A %CV	APC-A %CV
P5	2.3	11.6
P6	2.3	11.6



Population	FSC-A %CV
P1	4.5
P2	1.7

Population	FITC-A Mean	PE-A PE-Texas R... Mean	PerCP-Cy5-... Mean	PE-Cy7-A Mean	APC-A Mean	APC-Cy7-A Mean
P6	50,641	45,786	103,968	177,961	50,494	87,383