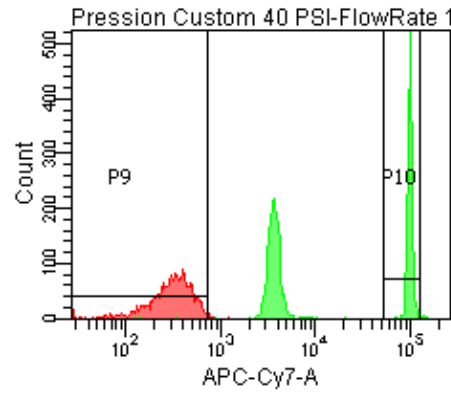
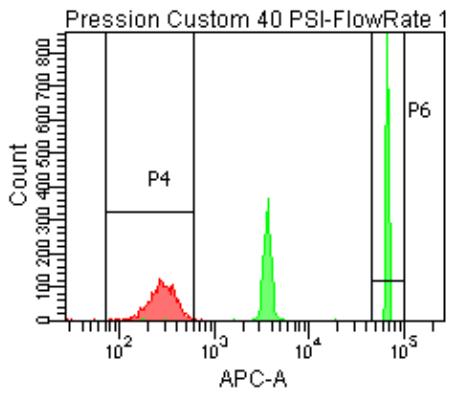
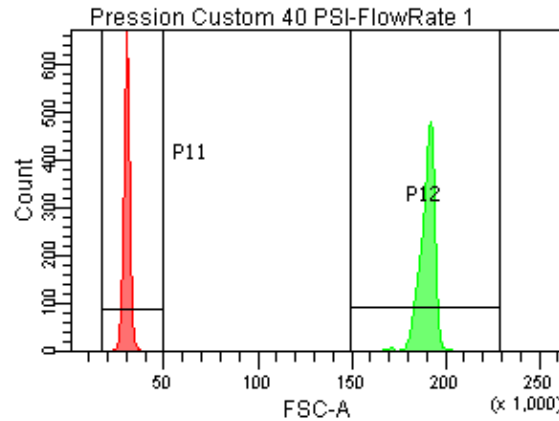
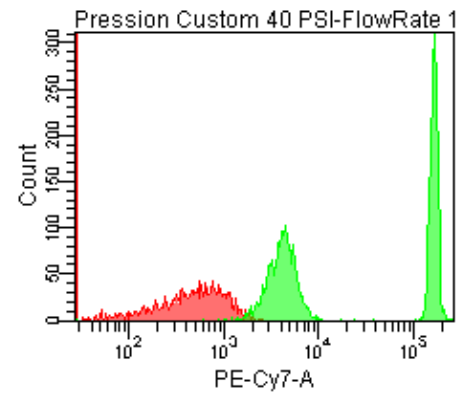
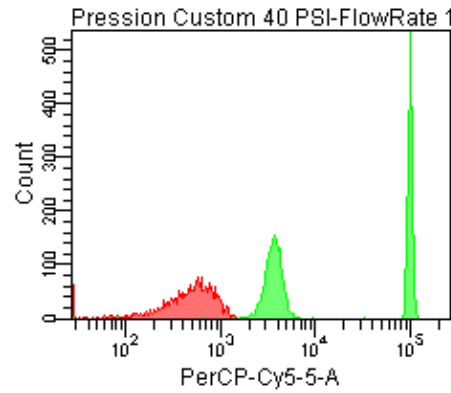


Population	FITC-A %CV	APC-A %CV
P5	2.4	3.0
P6	2.4	3.0



Population	FSC-A %CV
P1	5.4
P2	2.1

Population	FITC-A Mean	PE-A Mean	PE-Texas ... Mean	PerCP-Cy... Mean	PE-Cy7-A Mean	APC-A Mean	APC-Cy7-A Mean
P6	50,693	46,329	47,215	101,700	168,247	67,945	101,819