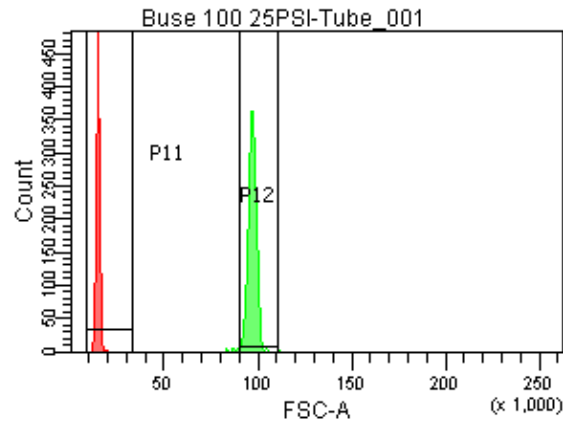
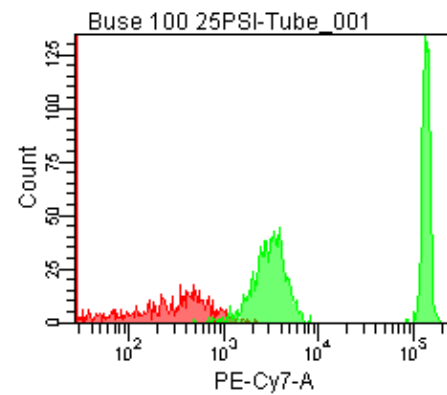
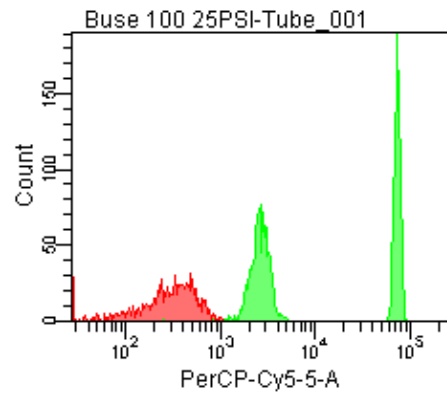
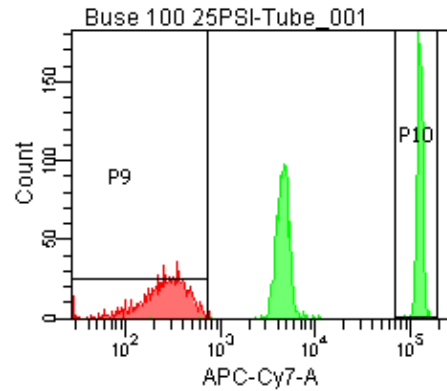
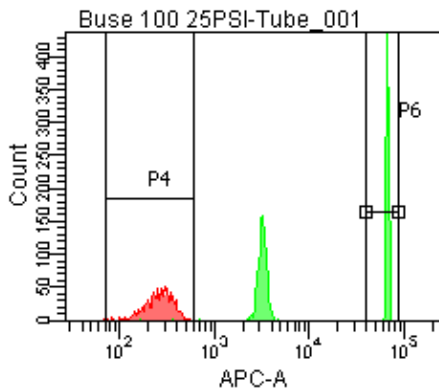


Population	FITC-A %CV	APC-A %CV
P5	2.3	2.6
P6	2.3	2.6



25 PSI  
Buse 100



Population	FSC-A Median	FSC-A %CV
P1	13,966	6.0
P2	96,756	2.4

Population	FITC-A Mean	PE-A Mean	PE-Texas ... Mean	PerCP-Cy... Mean	PE-Cy7-A Mean	APC-A Mean	APC-Cy7-A Mean
P2	15,105	14,367	14,023	36,321	66,913	33,690	62,942