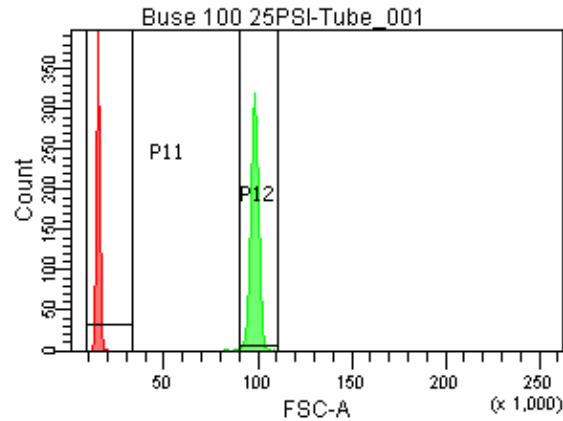
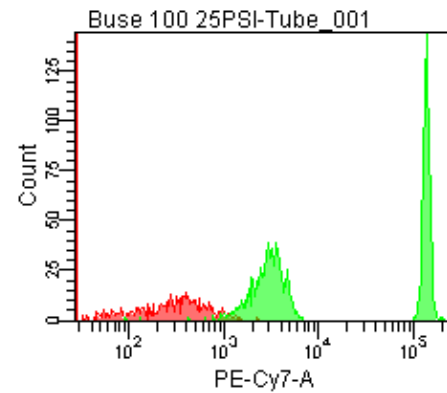
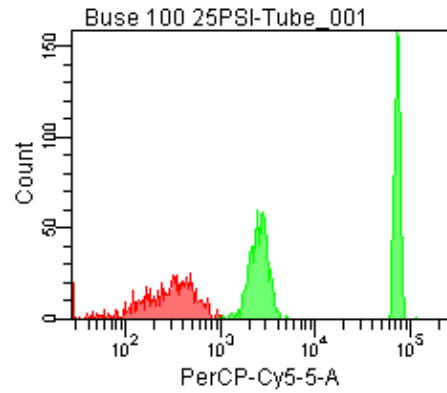
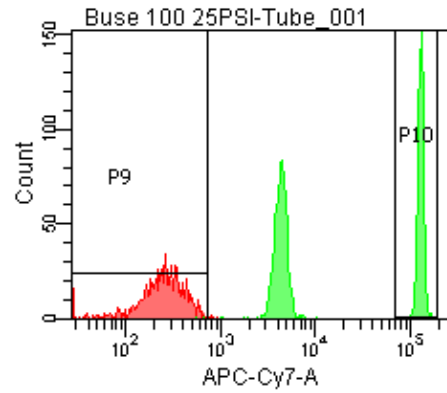
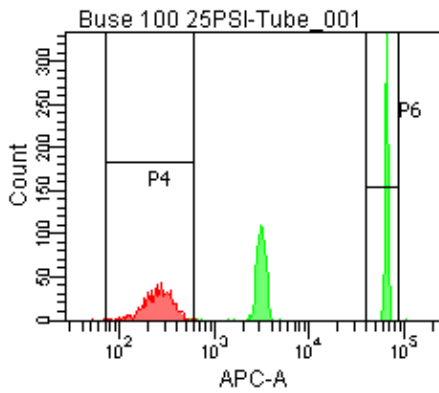


Population	FITC-A %CV	APC-A %CV
P5	2.5	3.3
P6	2.5	3.3



25 PSI
Buse 100



Population	FSC-A Median	FSC-A %CV
P1	14,051	5.9
P2	98,101	2.4

Population	FITC-A Mean	PE-A Mean	PE-Texas ... Mean	PerCP-Cy... Mean	PE-Cy7-A Mean	APC-A Mean	APC-Cy7-A Mean
P2	15,871	14,747	14,258	36,853	68,472	33,306	65,286