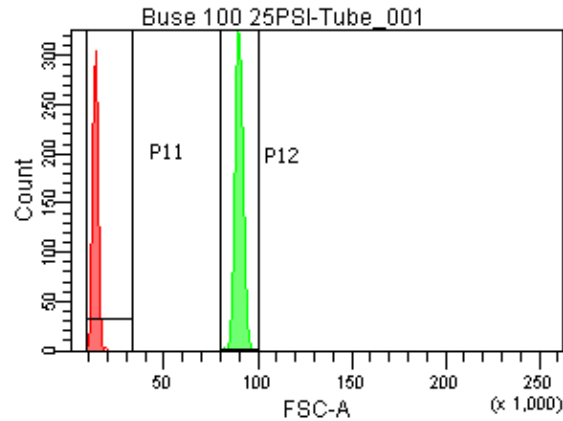
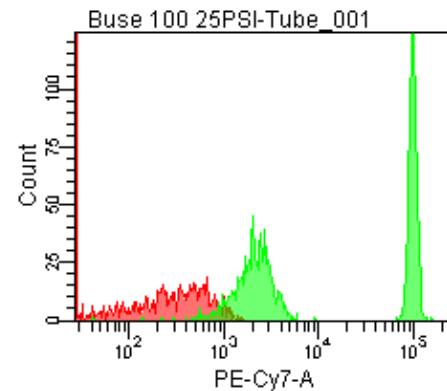
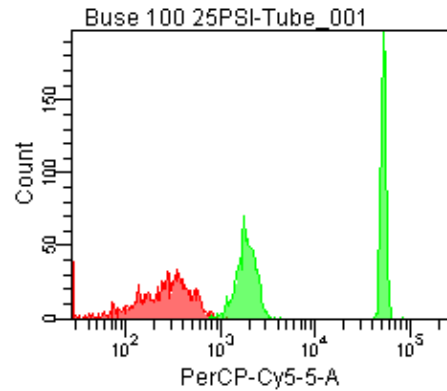
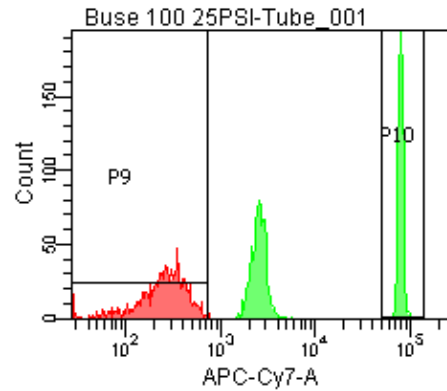
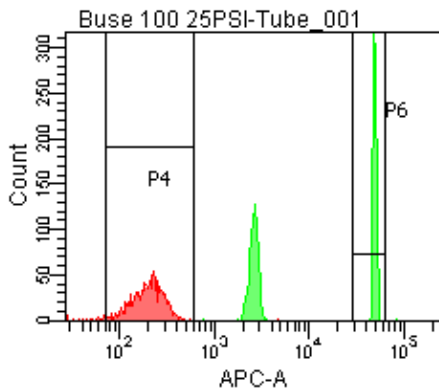


Population	FITC-A %CV	APC-A %CV
P5	2.7	3.0
P6	2.7	3.0



25 PSI
Buse 100



Population	FSC-A Median	FSC-A %CV
P1	12,457	10.5
P2	89,682	2.2

Population	FITC-A Mean	PE-A Mean	PE-Texas ... Mean	PerCP-Cy... Mean	PE-Cy7-A Mean	APC-A Mean	APC-Cy7-A Mean
P2	12,042	11,702	10,154	26,303	48,863	25,098	39,893