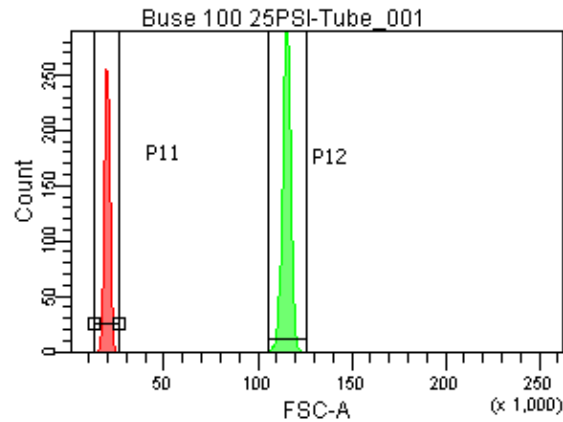
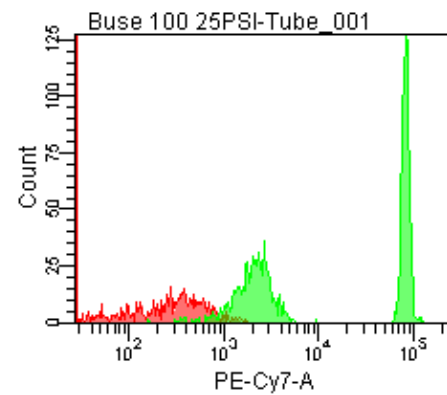
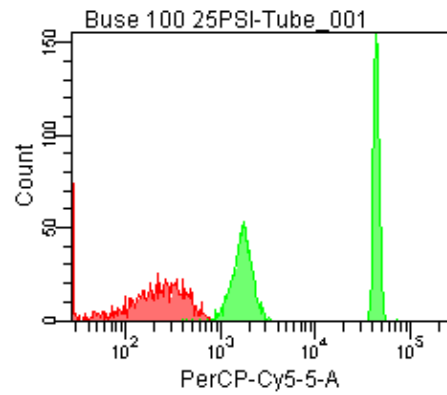
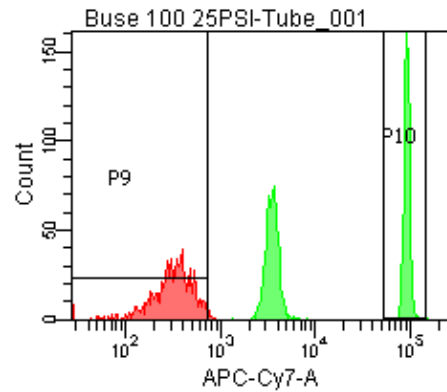
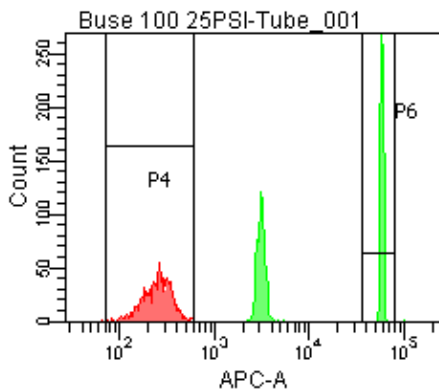


Population	FITC-A %CV	APC-A %CV
P5	3.5	3.4
P6	3.5	3.4



25 PSI
Buse 100



Population	FSC-A Median	FSC-A %CV
P1	18,819	6.7
P2	115,272	1.8

Population	FITC-A Mean	PE-A PE-Texas ... Mean	PerCP-Cy... Mean	PE-Cy7-A Mean	APC-A Mean	APC-Cy7-A Mean	
P2	11,448	10,881	9,531	23,323	43,527	31,242	49,140