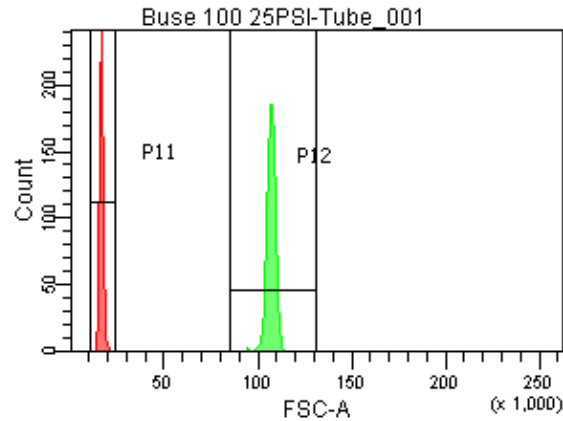
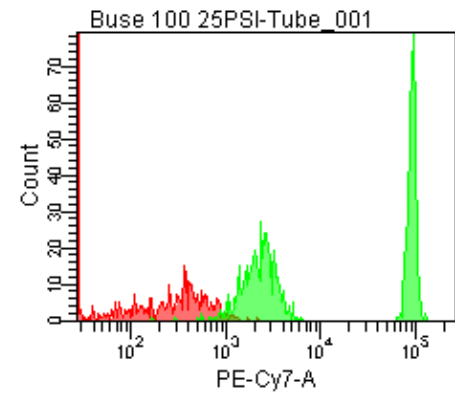
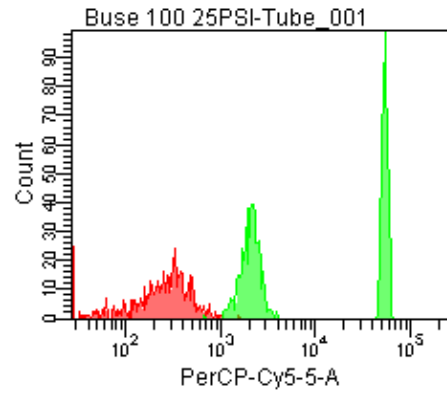
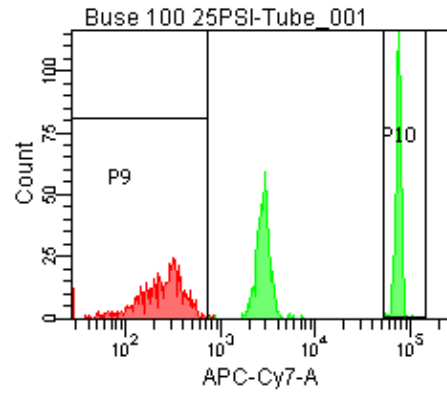
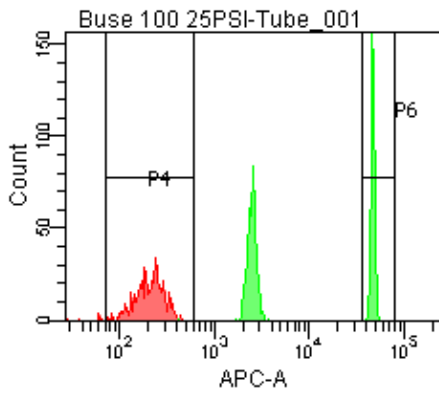


Population	FITC-A %CV	APC-A %CV
P5	2.2	3.8
P6	2.2	3.8



25 PSI  
Buse 100

Population	FSC-A Median	FSC-A %CV
P1	15,670	5.5
P2	106,951	2.1



Population	FITC-A Mean	PE-A Mean	PE-Texas ... Mean	PerCP-Cy... Mean	PE-Cy7-A Mean	APC-A Mean	APC-Cy7-A Mean
P2	10,791	8,240	11,030	27,051	45,558	23,713	37,507