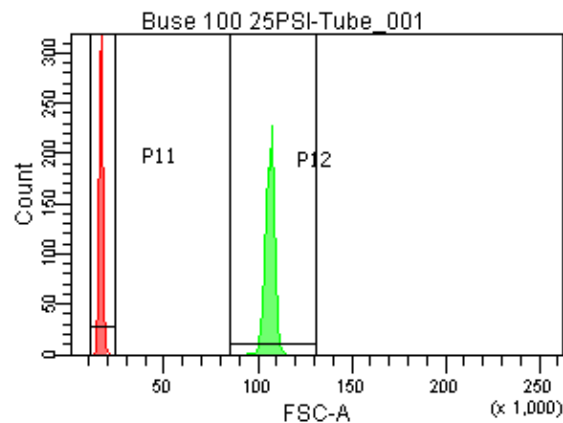
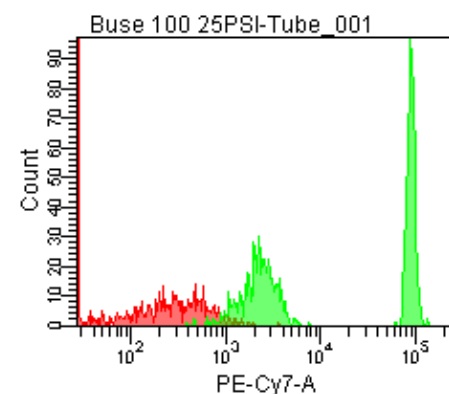
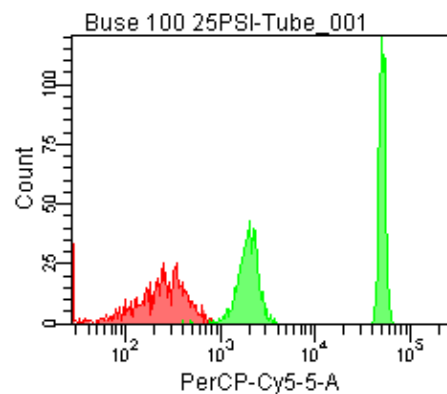


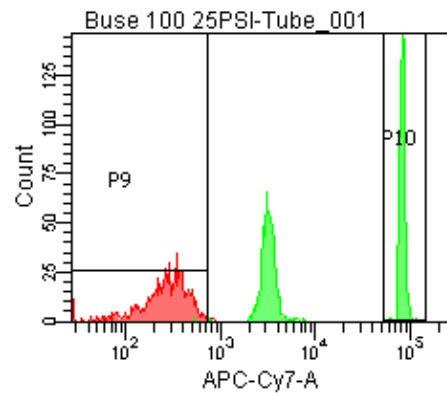
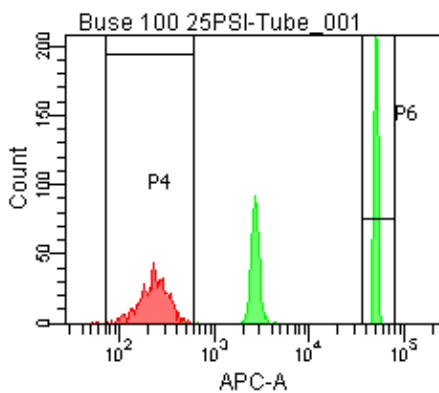
Population	FITC-A %CV	APC-A %CV
P5	2.2	3.7
P6	2.2	3.7



25 PSI  
Buse 100



Population	FSC-A Median	FSC-A %CV
P1	15,466	5.2
P2	106,368	2.3



Population	FITC-A Mean	PE-A Mean	PE-Texas ... Mean	PerCP-Cy... Mean	PE-Cy7-A Mean	APC-A Mean	APC-Cy7-A Mean
P2	11,452	11,516	10,620	27,163	47,630	27,370	44,573