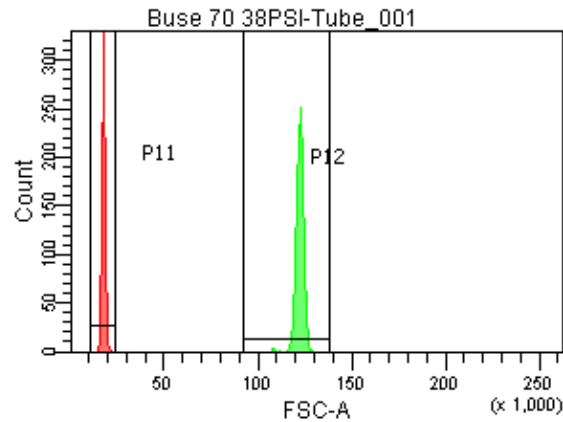
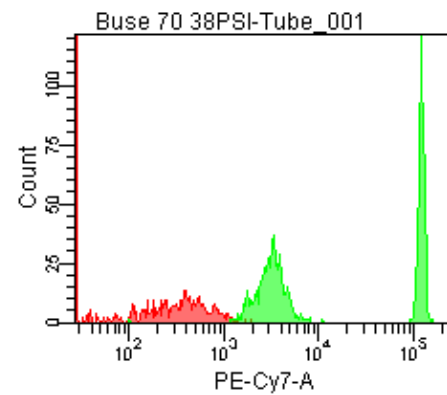
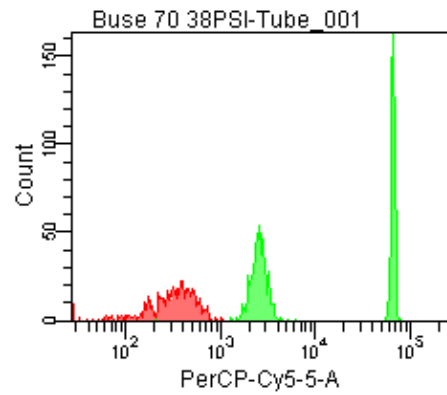
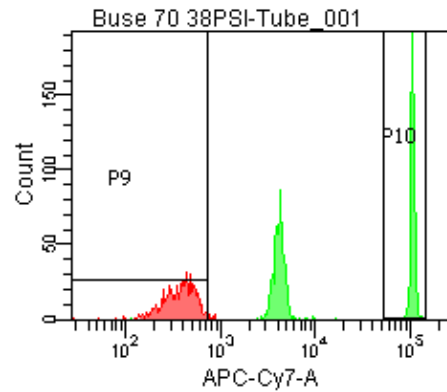
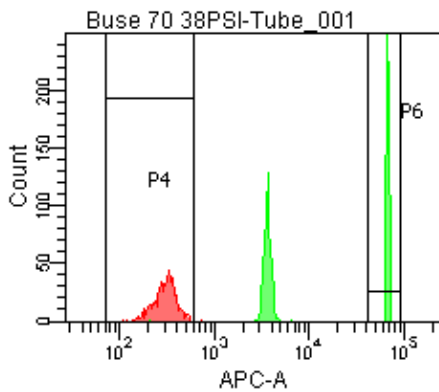


Population	FITC-A %CV	APC-A %CV
P5	1.9	2.3
P6	1.9	2.3



25 PSI
Buse 100



Population	FSC-A Median	FSC-A %CV
P1	16,943	4.4
P2	122,417	1.7

Population	FITC-A Mean	PE-A Mean	PE-Texas ... Mean	PerCP-Cy... Mean	PE-Cy7-A Mean	APC-A Mean	APC-Cy7-A Mean
P2	14,685	14,419	13,050	32,387	59,050	33,720	52,293