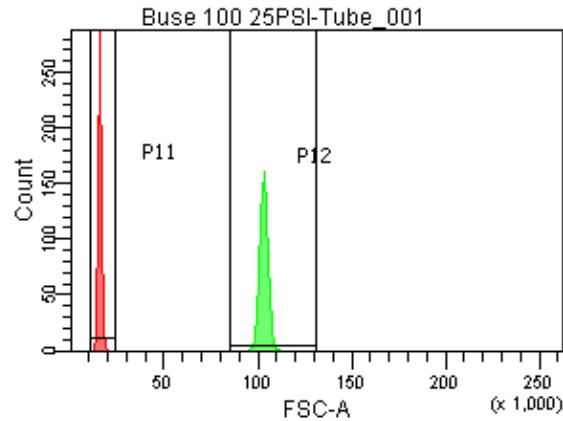
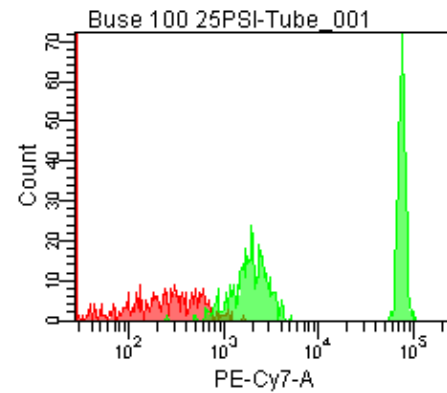
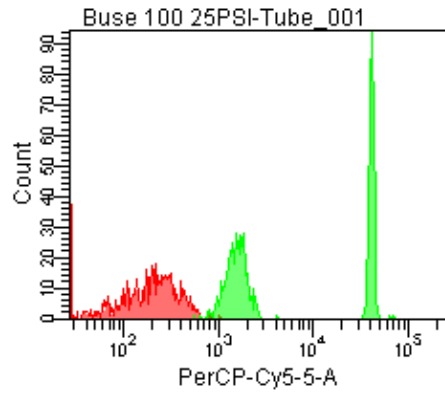
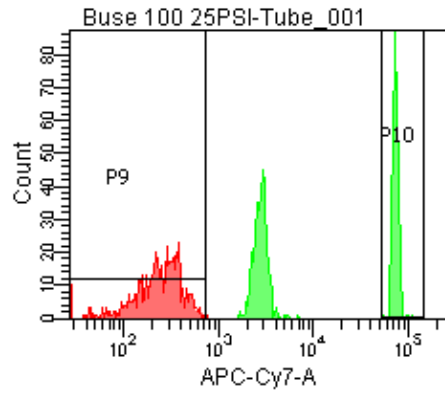
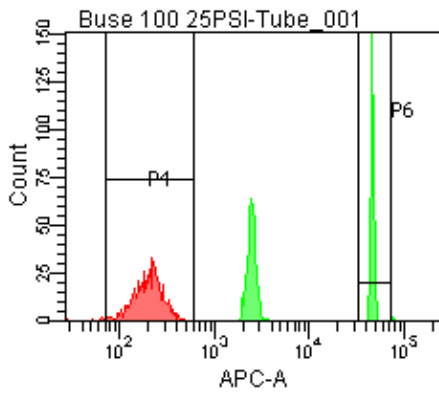


Population	FITC-A %CV	APC-A %CV
P5	2.5	3.5
P6	2.5	3.5



25 PSI
Buse 100



Population	FSC-A Median	FSC-A %CV
P1	14,933	5.4
P2	102,970	2.1

Population	FITC-A Mean	PE-A Mean	PE-Texas ... Mean	PerCP-Cy... Mean	PE-Cy7-A Mean	APC-A Mean	APC-Cy7-A Mean
P2	9,252	9,021	8,130	20,479	37,198	23,532	36,747