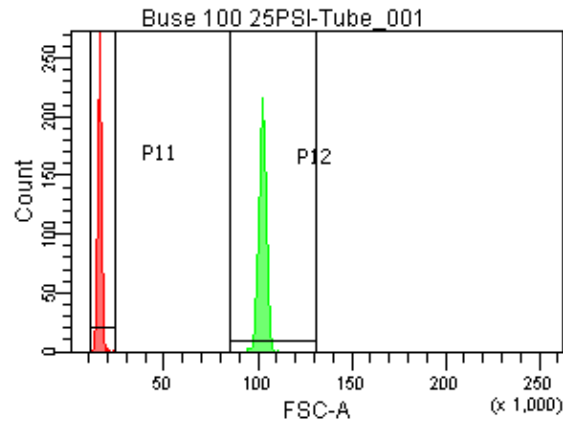
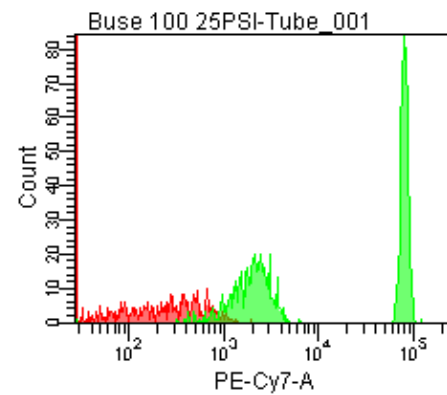
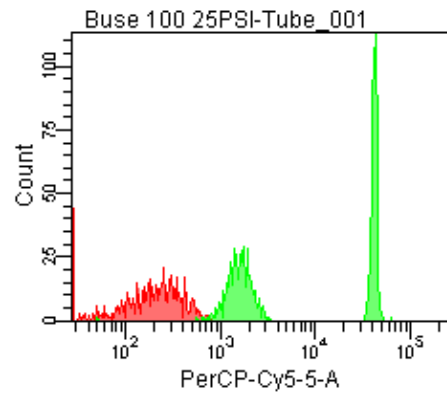


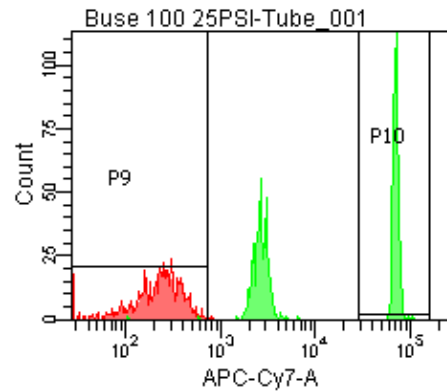
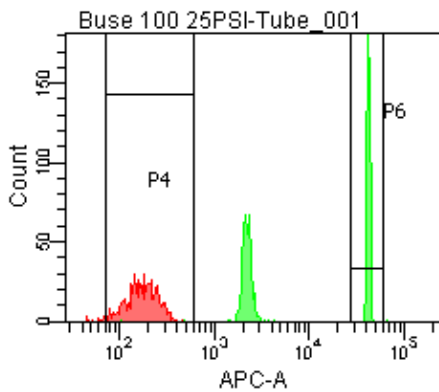
Population	FITC-A %CV	APC-A %CV
P5	3.8	3.5
P6	3.8	3.5



25 PSI
Buse 100



Population	FSC-A Median	FSC-A %CV
P1	14,741	6.5
P2	102,352	2.0



Population	FITC-A Mean	PE-A Mean	PE-Texas ... Mean	PerCP-Cy... Mean	PE-Cy7-A Mean	APC-A Mean	APC-Cy7-A Mean
P2	9,474	9,542	8,848	22,318	42,709	22,772	37,964