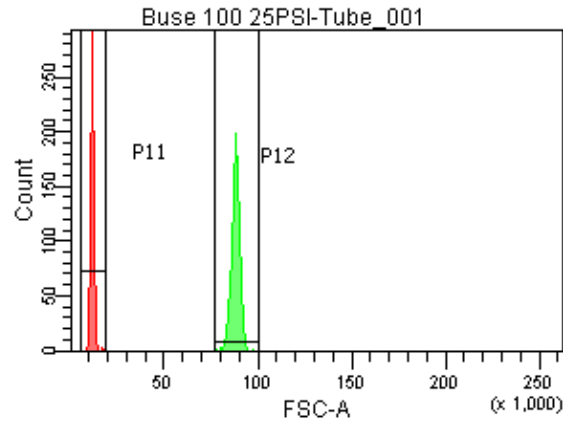
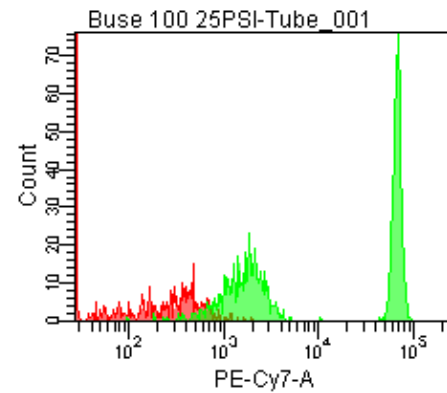
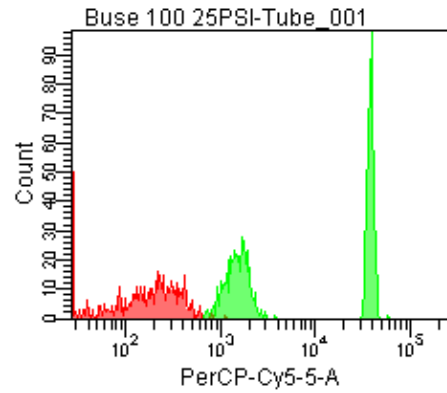
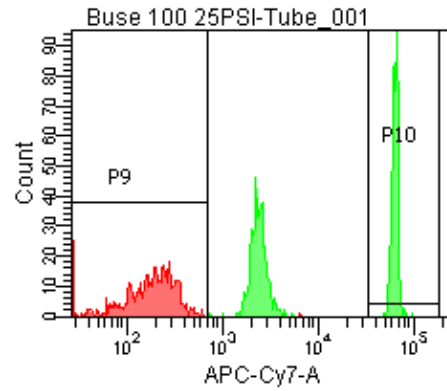
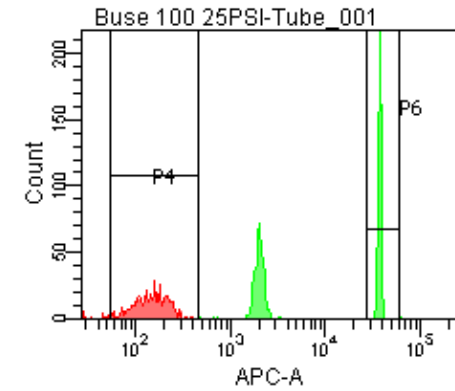


Population	FITC-A %CV	APC-A %CV
P5	2.6	3.0
P6	2.6	3.0



25 PSI
Buse 100



Population	FSC-A Median	FSC-A %CV
P1	10,822	7.5
P2	87,939	2.5

Population	FITC-A Mean	PE-A Mean	PE-Texas ... Mean	PerCP-Cy... Mean	PE-Cy7-A Mean	APC-A Mean	APC-Cy7-A Mean
P2	8,287	8,577	7,728	20,308	35,447	20,208	33,932