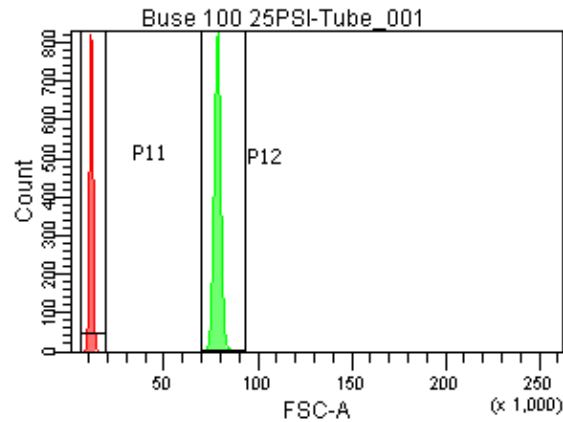
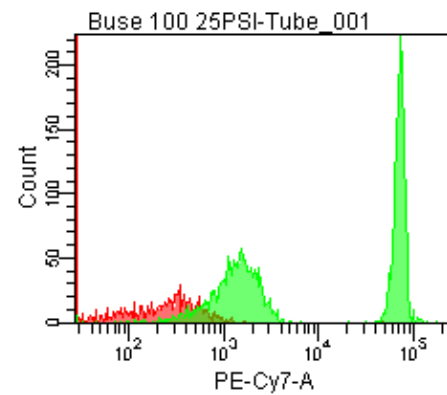
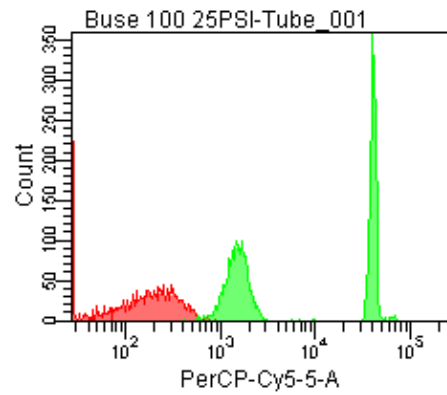
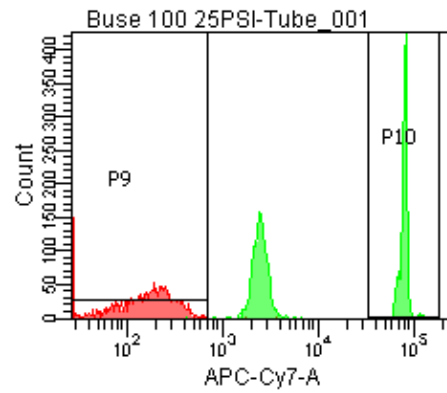
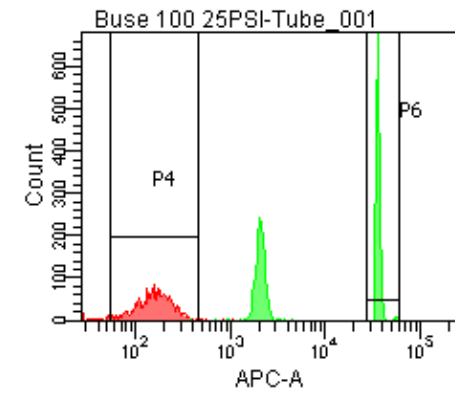


Population	FITC-A %CV	APC-A %CV
P5	3.4	4.4
P6	8.0	6.4



25 PSI
Buse 100



Population	FSC-A Median	FSC-A %CV
P1	10,283	6.6
P2	78,092	2.3

Population	FITC-A Mean	PE-A Mean	PE-Texas ... Mean	PerCP-Cy... Mean	PE-Cy7-A Mean	APC-A Mean	APC-Cy7-A Mean
P2	7,227	7,774	6,969	21,251	36,837	19,352	41,635