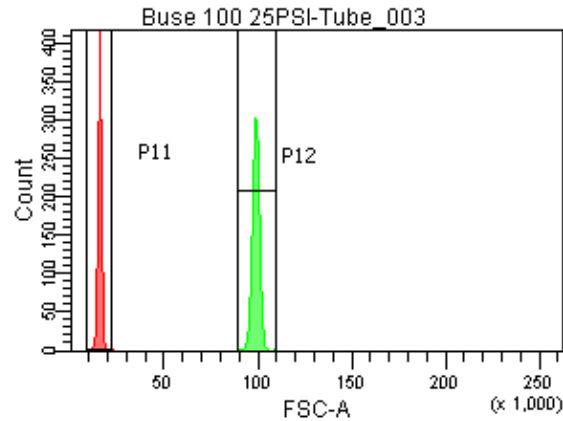
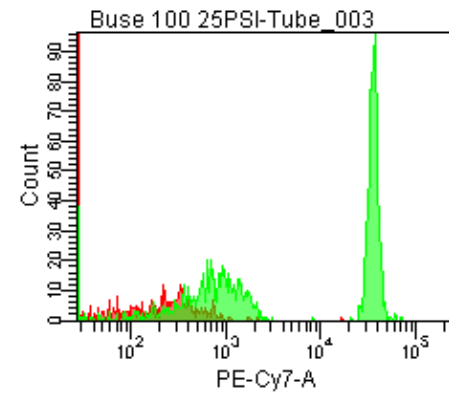
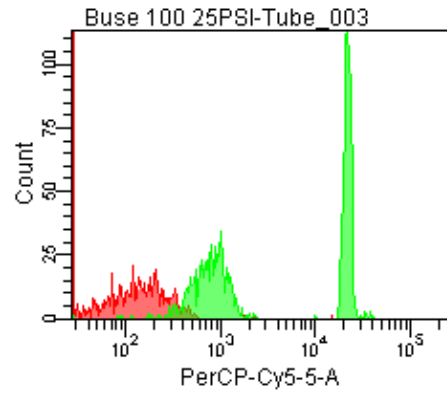
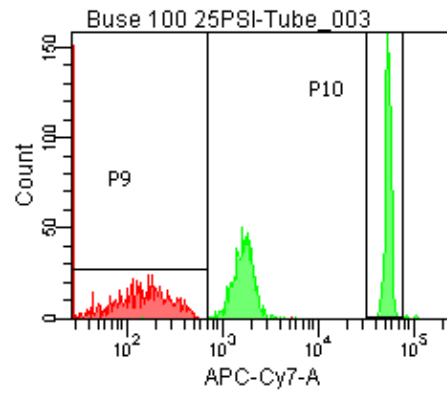
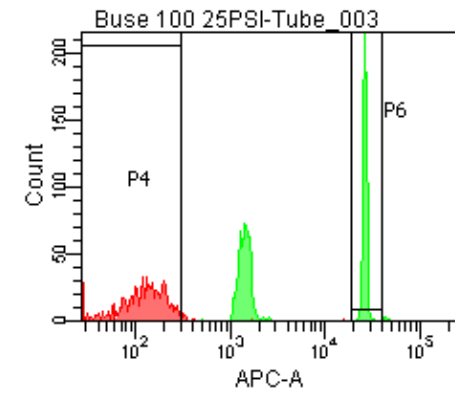


Population	FITC-A %CV	APC-A %CV
P5	5.0	4.6
P6	5.0	4.6



25 PSI
Buse 100



Population	FSC-A Median	FSC-A %CV
P1	14,917	6.5
P2	98,772	1.9

Population	FITC-A Mean	PE-A Mean	PE-Texas ... Mean	PerCP-Cy... Mean	PE-Cy7-A Mean	APC-A Mean	APC-Cy7-A Mean
P2	6,369	6,423	5,000	11,397	18,581	13,892	28,405