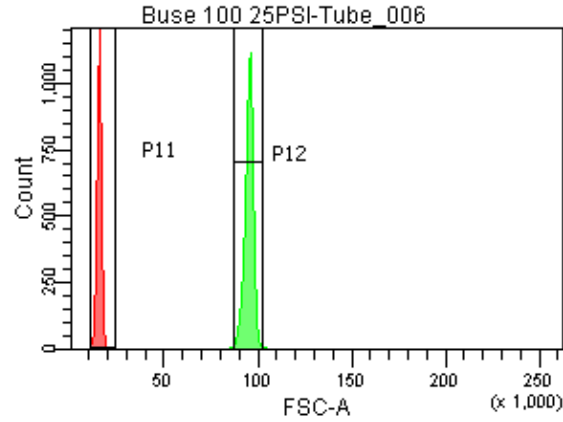
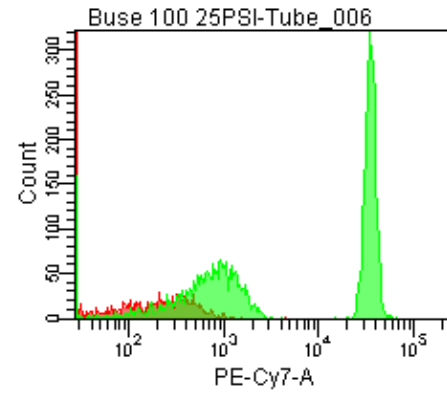
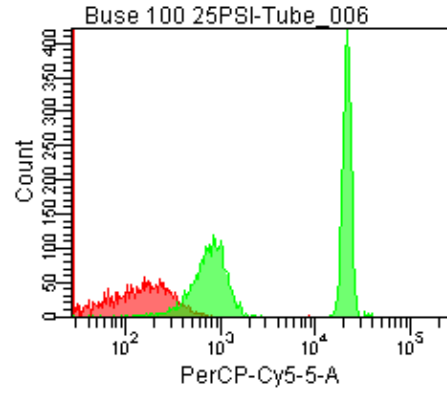
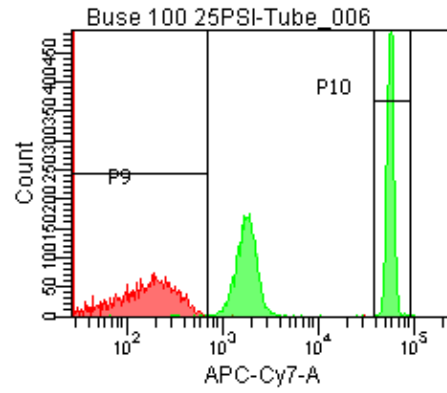
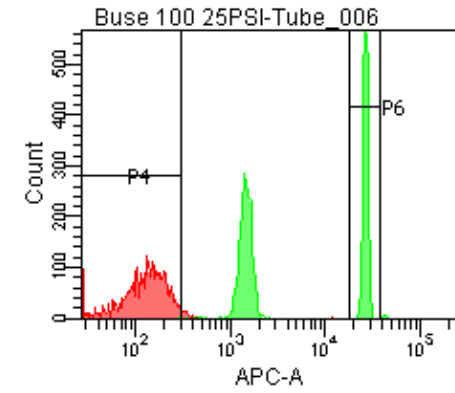


Population	FITC-A %CV	APC-A %CV
P5	7.7	5.8
P6	7.7	5.8



25 PSI  
Buse 100



Population	FSC-A Median	FSC-A %CV
P1	14,574	7.8
P2	95,240	2.4

Population	FITC-A Mean	PE-A Mean	PE-Texas ... Mean	PerCP-Cy... Mean	PE-Cy7-A Mean	APC-A Mean	APC-Cy7-A Mean
P2	6,429	6,464	5,060	11,276	18,216	14,250	30,069