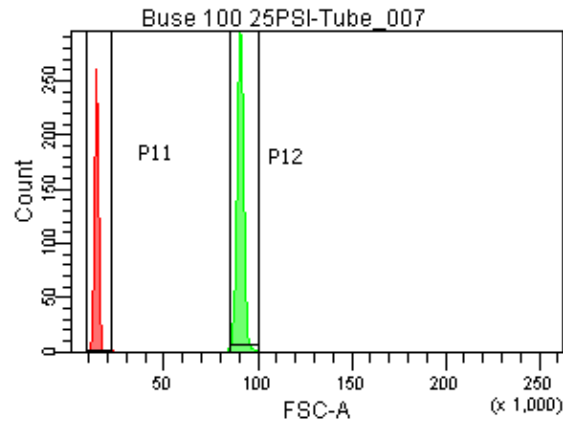
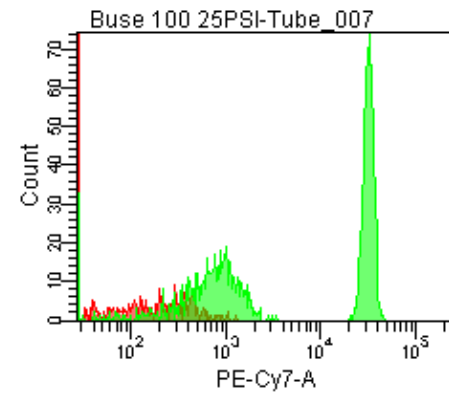
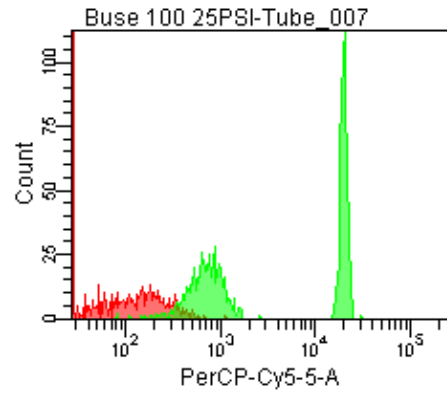


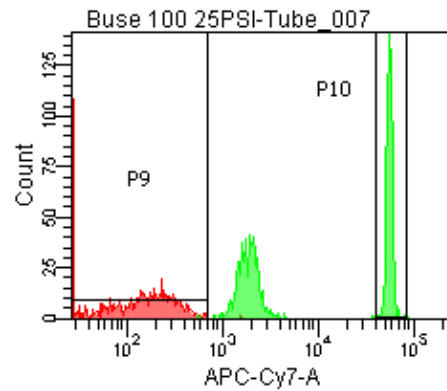
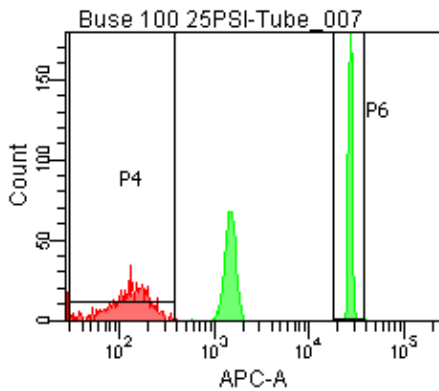
Population	FITC-A %CV	APC-A %CV
P5	4.8	4.5
P6	4.8	4.5



25 PSI
Buse 100



Population	FSC-A Median	FSC-A %CV
P1	13,172	8.0
P2	90,372	1.9



Population	FITC-A Mean	PE-A Mean	PE-Texas ... Mean	PerCP-Cy... Mean	PE-Cy7-A Mean	APC-A Mean	APC-Cy7-A Mean
P2	5,876	5,950	4,585	10,498	16,648	14,501	29,582