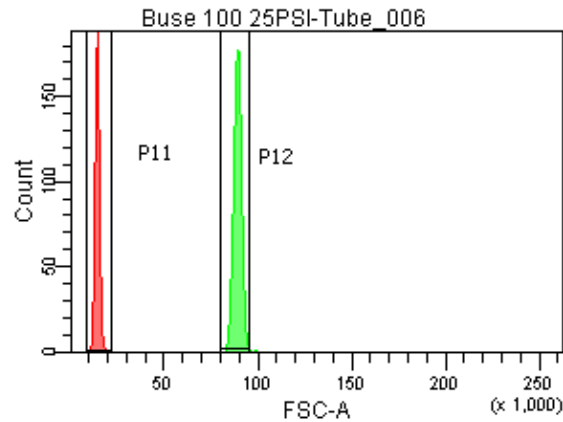
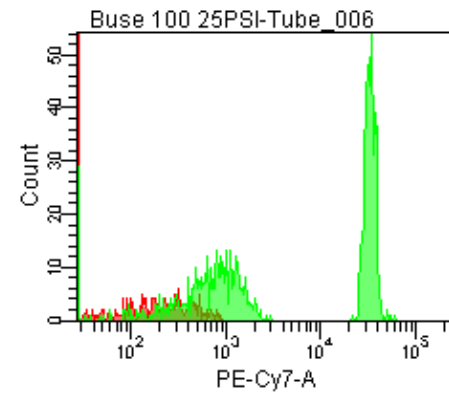
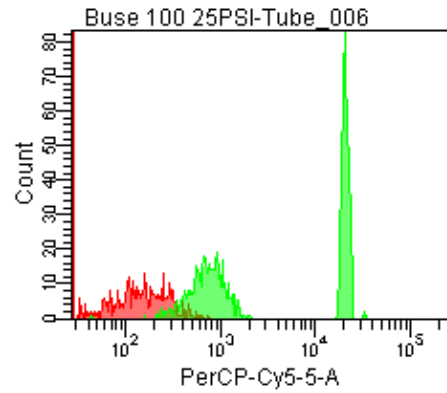


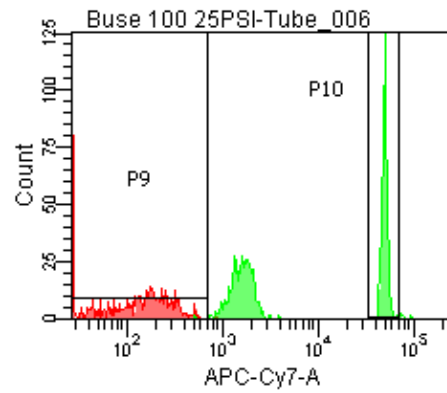
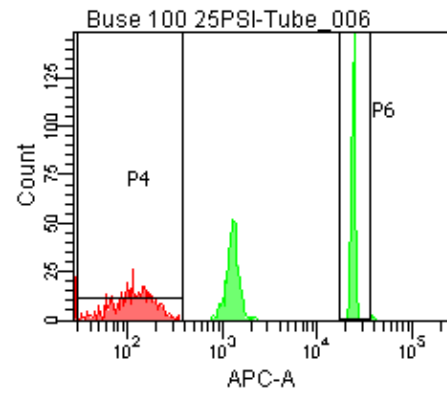
Population	FITC-A %CV	APC-A %CV
P5	4.9	4.0
P6	4.9	4.0



25 PSI  
Buse 100



Population	FSC-A Median	FSC-A %CV
P1	13,468	7.7
P2	88,893	2.3



Population	FITC-A Mean	PE-A PE-Texas ... Mean	PE-A PE-Texas ... Mean	PerCP-Cy... Mean	PE-Cy7-A Mean	APC-A Mean	APC-Cy7-A Mean
P2	5,649	5,812	4,582	10,810	17,156	12,744	26,141