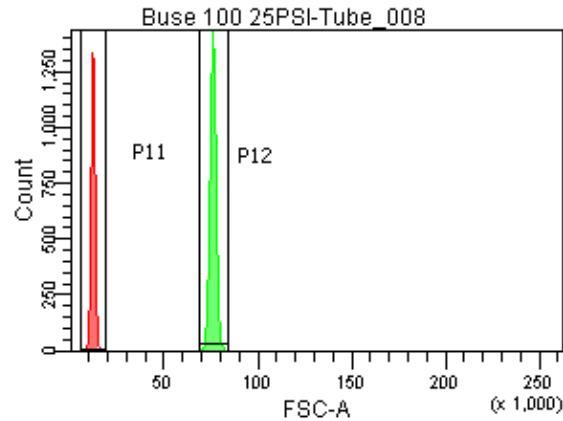
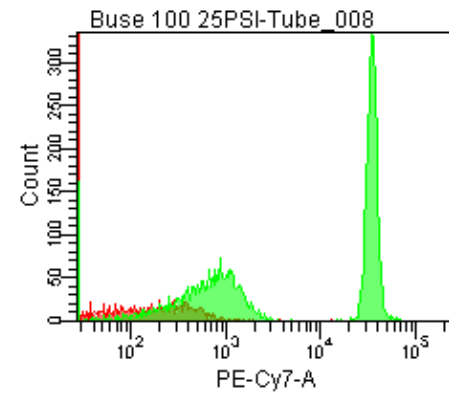
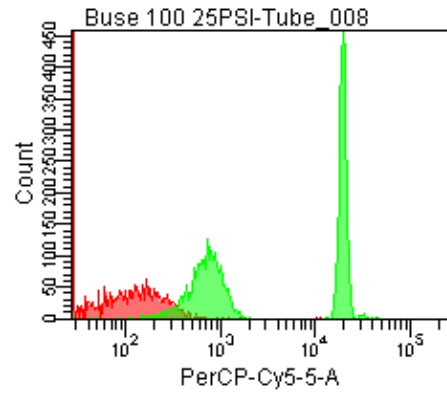
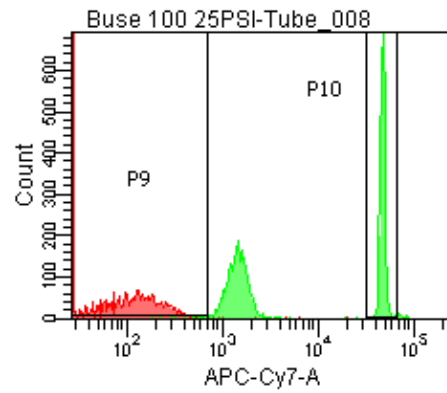
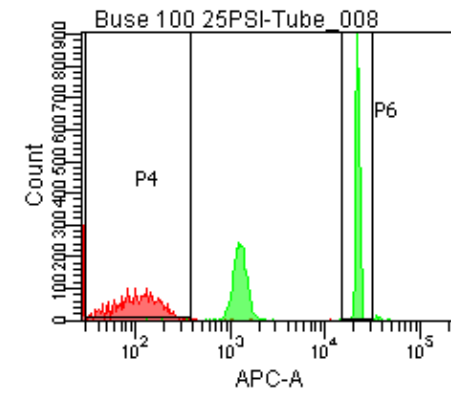


Population	FITC-A %CV	APC-A %CV
P5	4.9	4.2
P6	4.9	4.1



25 PSI
Buse 100



Population	FSC-A Median	FSC-A %CV
P1	11,300	7.9
P2	75,735	2.0

Population	FITC-A Mean	PE-A Mean	PE-Texas ... Mean	PerCP-Cy... Mean	PE-Cy7-A Mean	APC-A Mean	APC-Cy7-A Mean
P2	9,301	8,677	7,012	10,336	18,167	11,862	25,139