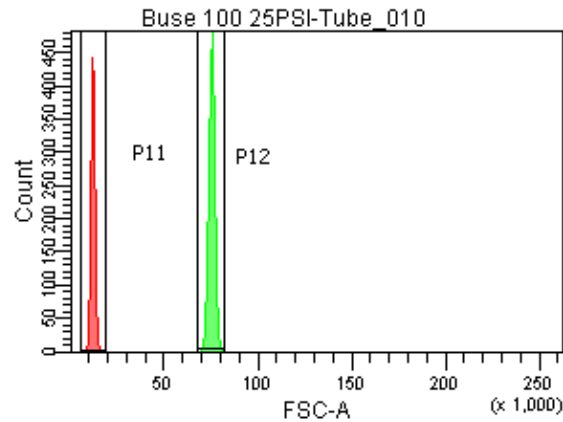
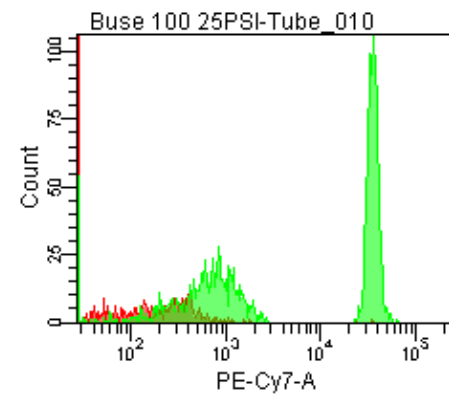
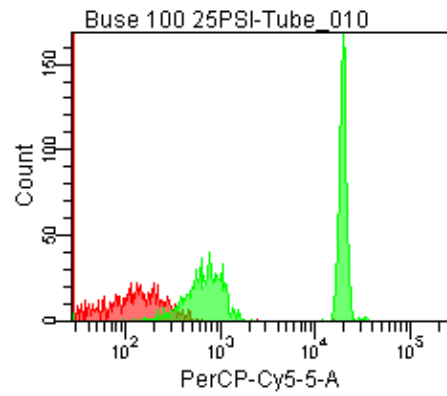
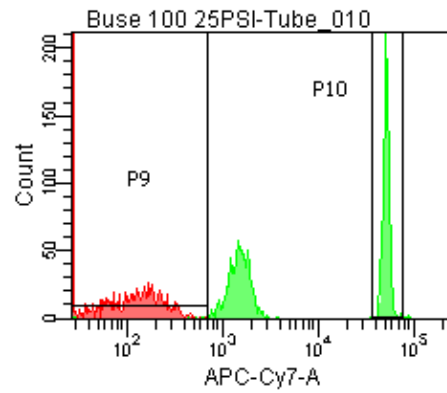
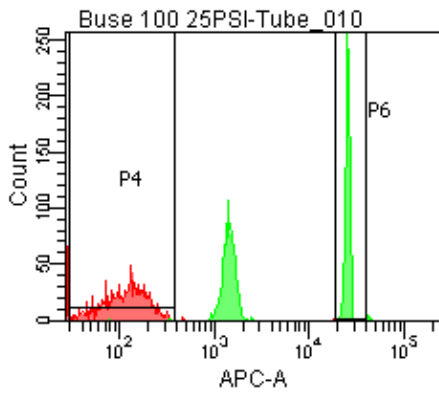


Population	FITC-A %CV	APC-A %CV
P5	5.2	4.8
P6	5.8	5.1



25 PSI  
Buse 100



Population	FSC-A Median	FSC-A %CV
P1	11,243	8.2
P2	75,103	2.0

Population	FITC-A Mean	PE-A Mean	PE-Texas ... Mean	PerCP-Cy... Mean	PE-Cy7-A Mean	APC-A Mean	APC-Cy7-A Mean
P2	9,477	8,935	7,218	10,552	19,053	13,928	27,872