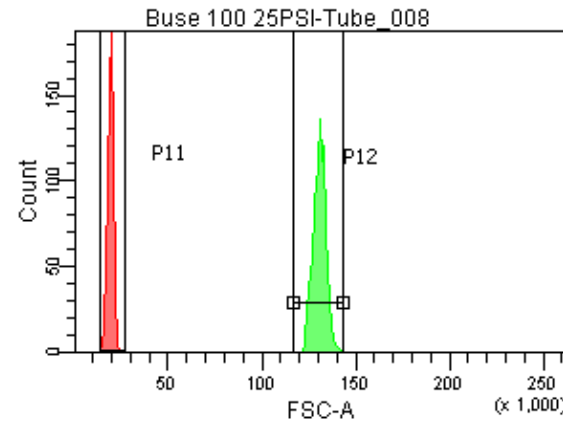
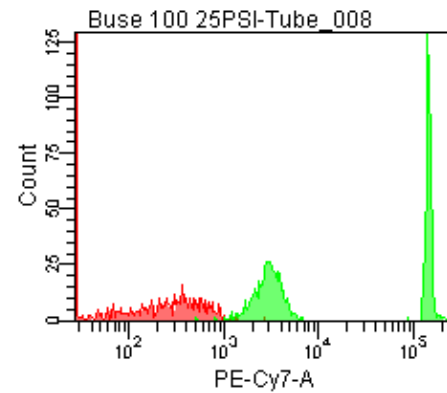
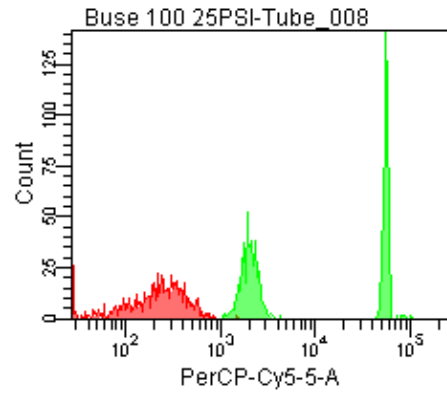
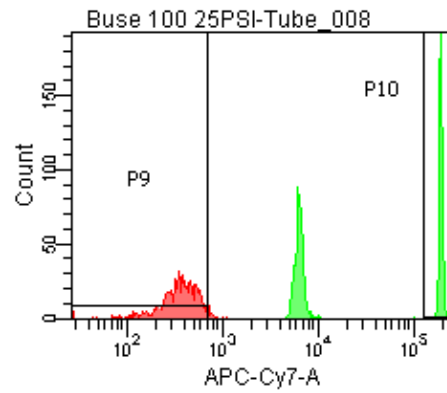
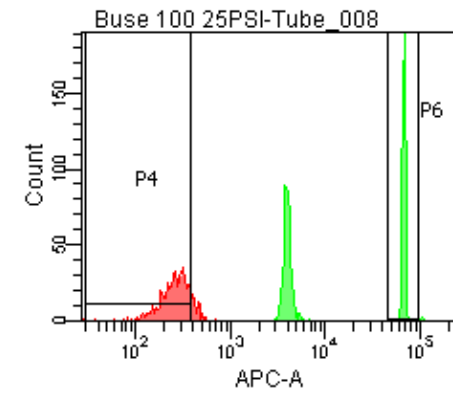


Population	FITC-A %CV	APC-A %CV
P5	3.8	3.5
P6	4.5	3.8



25 PSI  
Buse 100



Population	FSC-A Median	FSC-A %CV
P1	18,576	8.1
P2	130,846	2.5

Population	FITC-A Mean	PE-A Mean	PE-Texas ... Mean	PerCP-Cy... Mean	PE-Cy7-A Mean	APC-A Mean	APC-Cy7-A Mean
P2	18,061	17,394	13,492	28,485	73,619	35,715	99,691