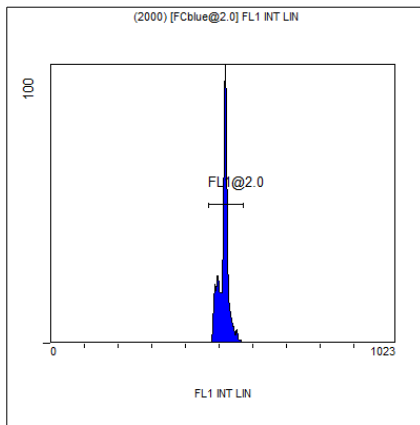


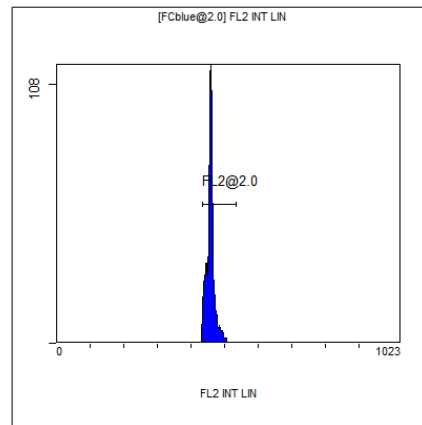
[Ungated] FS INT LIN

Region	Number	HP X-CV	X-Mean
ALL	4719	1.06	354
FCblue@2.0	2000	1.11	579
FCred	1227	0.74	268
FCviolet	1164	1.06	85.2



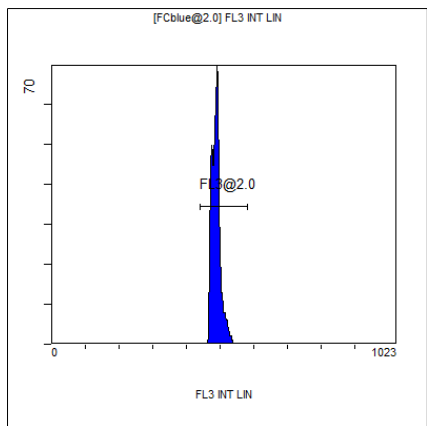
(2000) [FCblue@2.0] FL1 INT LIN

Region	Number	HP X-CV	X-Mean
ALL	2000	0.76	514
FL1@2.0	1989	0.76	514



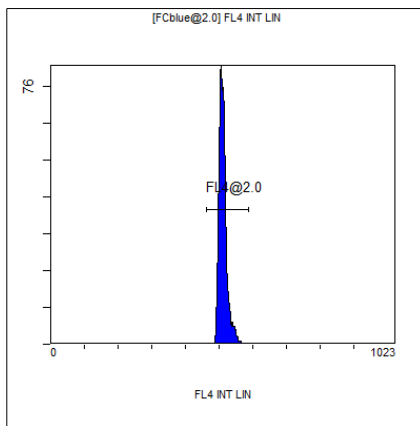
[FCblue@2.0] FL2 INT LIN

Region	Number	HP X-CV	X-Mean
ALL	2000	0.84	458
FL2@2.0	1974	0.84	459



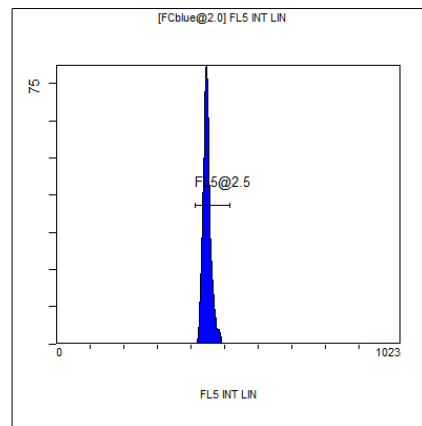
[FCblue@2.0] FL3 INT LIN

Region	Number	HP X-CV	X-Mean
ALL	2000	1.34	488
FL3@2.0	1994	1.34	489



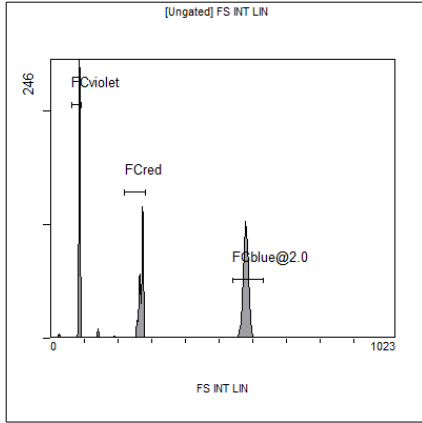
[FCblue@2.0] FL4 INT LIN

Region	Number	HP X-CV	X-Mean
ALL	2000	1.64	512
FL4@2.0	1992	1.64	512



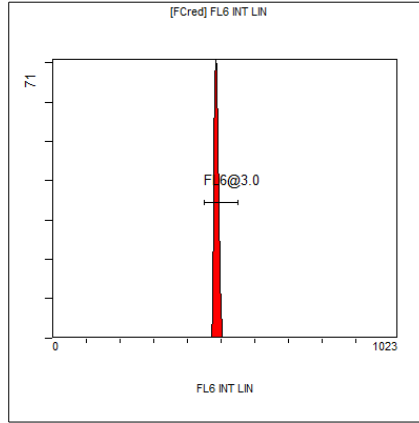
[FCblue@2.0] FL5 INT LIN

Region	Number	HP X-CV	X-Mean
ALL	2000	1.43	448
FL5@2.5	1991	1.43	448



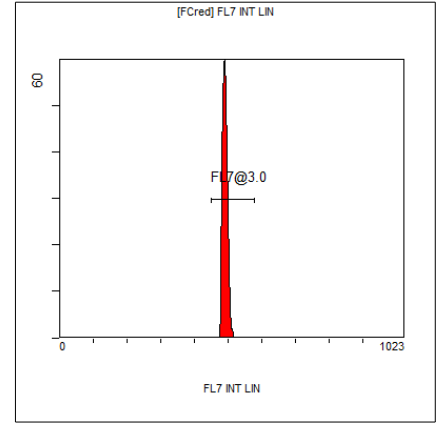
[Ungated] FS INT LIN

Region	Number	HP X-CV	X-Mean
ALL	4719	1.06	354
FCblue@2.0	2000	1.11	579
FCred	1227	0.74	268
FCviolet	1164	1.06	85.2



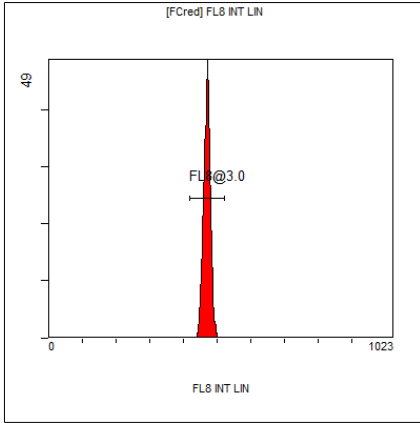
[FCred] FL6 INT LIN

Region	Number	HP X-CV	X-Mean
ALL	1227	1.33	483
FL6@3.0	1213	1.33	485



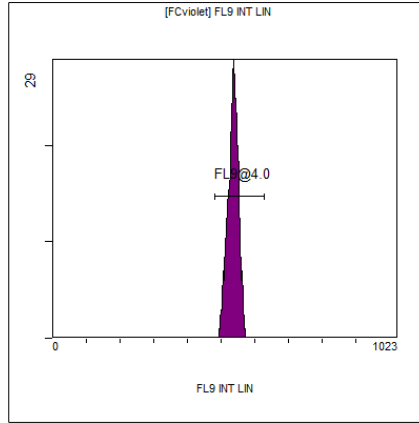
[FCred] FL7 INT LIN

Region	Number	HP X-CV	X-Mean
ALL	1227	1.39	488
FL7@3.0	1214	1.39	491



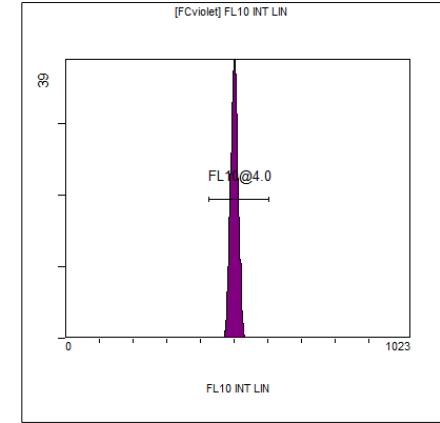
[FCred] FL8 INT LIN

Region	Number	HP X-CV	X-Mean
ALL	1227	1.55	467
FL8@3.0	1216	1.55	469



[FCviolet] FL9 INT LIN

Region	Number	HP X-CV	X-Mean
ALL	1164	1.00	531
FL9@4.0	1157	1.00	534



[FCviolet] FL10 INT LIN

Region	Number	HP X-CV	X-Mean
ALL	1164	1.91	497
FL10@4.0	1157	1.91	500