

Institution: IRB

Run Date: 15-Nov-10, 09:48:59

Protocol :Alignment Blue Red Violet_ALIGN.pro

Sample ID: FlowCheck

Listmode Replay: Runtime Protocol

User ID: duperray

Analysis Date: 15-Nov-2010, 09:50:51

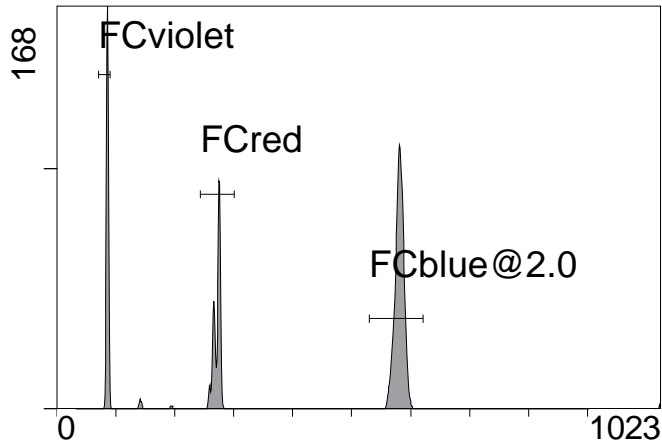
Acquisition Time/Events: 24.7s / 3855 (PROTOCOL)

Settings File: Alignment Blue Red Violet_ALIGN.pro, 18-Jun-2010, 16:10:42

Listmode File: FlowCheck 2010-11-15 002.LMD

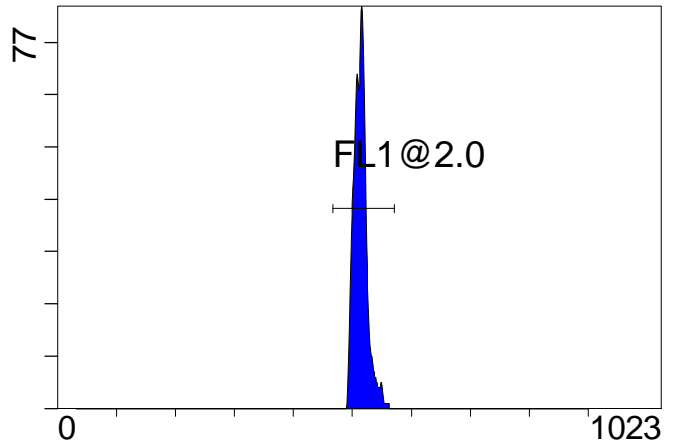
Instrument SN: AN11038 Software Version: Gallios 1.1

[Ungated] FS INT LIN



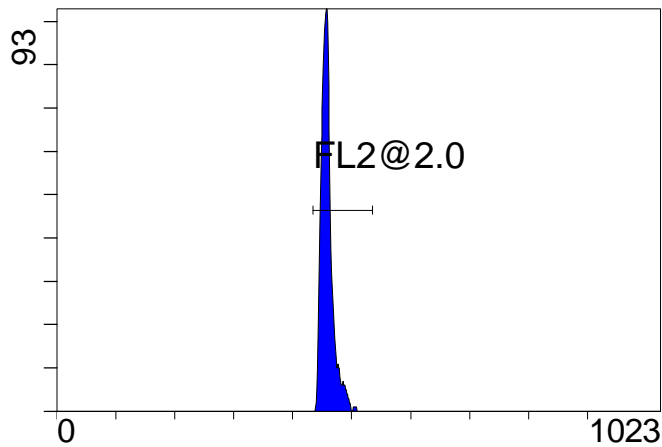
FS INT LIN

(2000) [FCblue@2.0] FL1 INT LIN



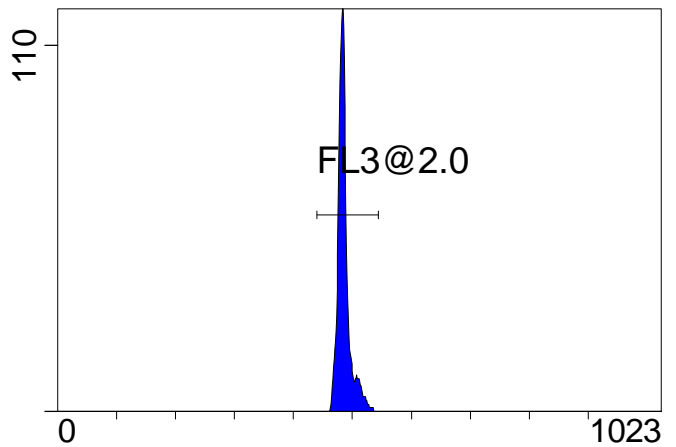
FL1 INT LIN

[FCblue@2.0] FL2 INT LIN



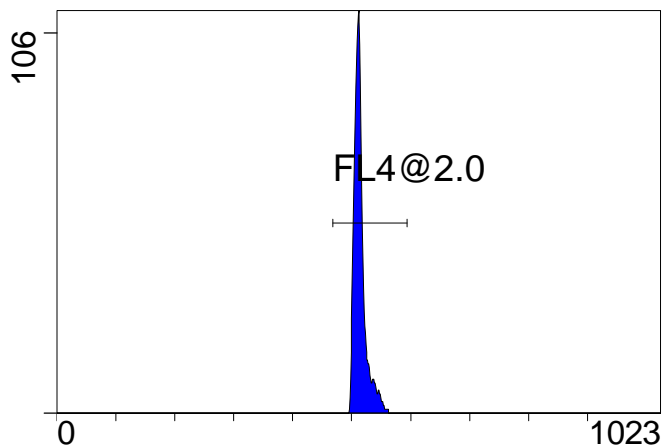
FL2 INT LIN

[FCblue@2.0] FL3 INT LIN



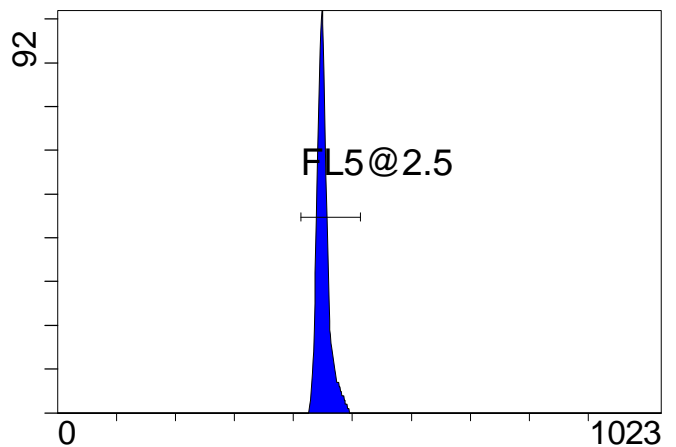
FL3 INT LIN

[FCblue@2.0] FL4 INT LIN



FL4 INT LIN

[FCblue@2.0] FL5 INT LIN



FL5 INT LIN

Institution: IRB

Protocol :Alignment Blue Red Violet_ALIGN.pro

Listmode Replay: Runtime Protocol

Analysis Date: 15-Nov-2010, 09:50:51

Settings File: Alignment Blue Red Violet_ALIGN.pro, 18-Jun-2010, 16:10:42

Listmode File: FlowCheck 2010-11-15 002.LMD

Run Date: 15-Nov-10, 09:48:59

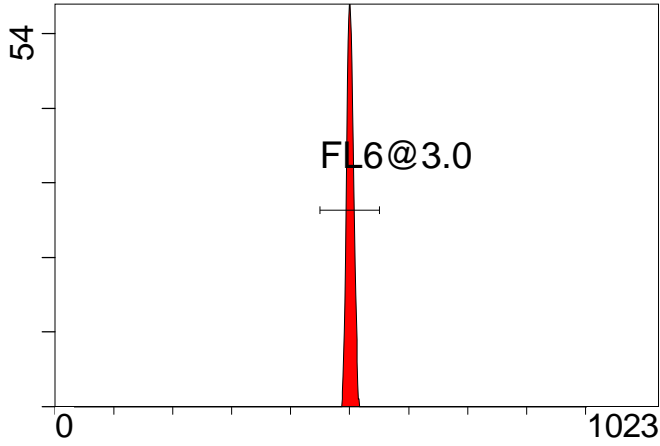
Sample ID: FlowCheck

User ID: duperray

Acquisition Time/Events: 24.7s / 3855 (PROTOCOL)

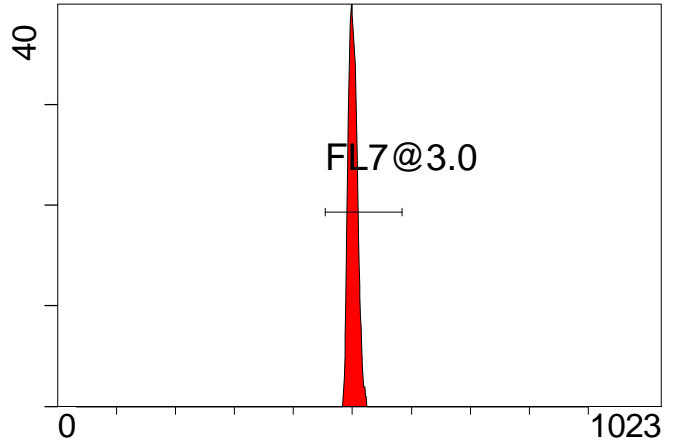
Instrument SN: AN11038 Software Version: Gallios 1.1

[FCred] FL6 INT LIN



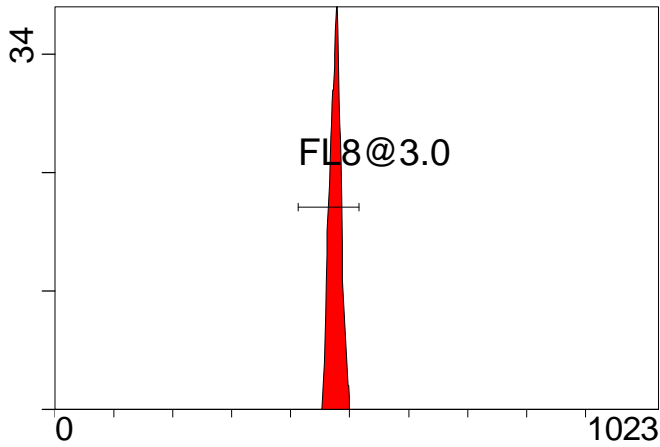
FL6 INT LIN

[FCred] FL7 INT LIN



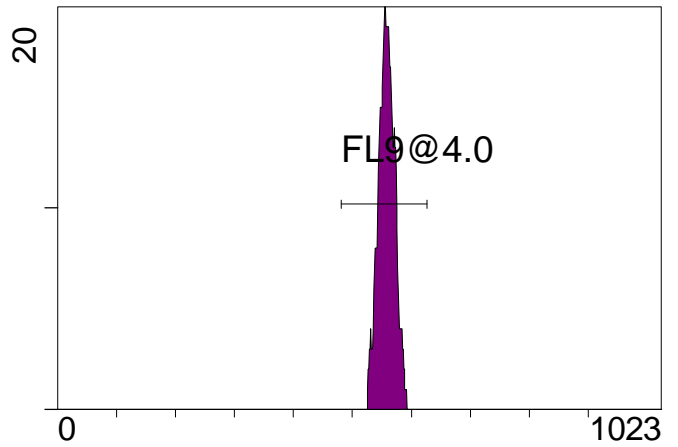
FL7 INT LIN

[FCred] FL8 INT LIN



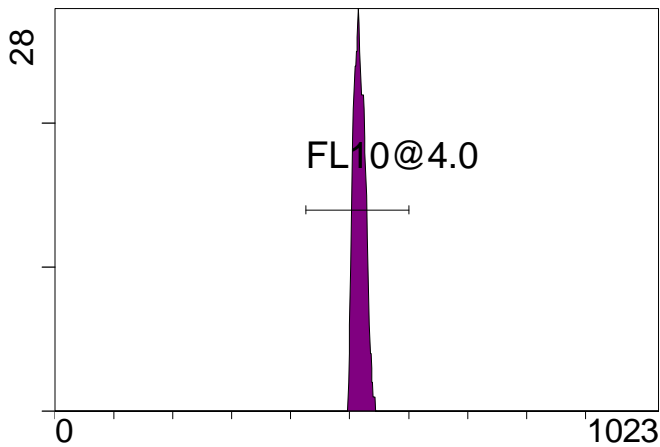
FL8 INT LIN

[FCviolet] FL9 INT LIN



FL9 INT LIN

[FCviolet] FL10 INT LIN



FL10 INT LIN