

Institution: IRB

Protocol :Alignment Blue Red Violet_ALIGN.pro

Listmode Replay: New Protocol

Analysis Date: 02-Nov-2010, 09:36:43

Settings File: Alignment Blue Red Violet_ALIGN.pro, 18-Jun-2010, 16:10:42

Listmode File: FlowCheck 2010-11-02 001.LMD

Run Date: 02-Nov-10, 09:34:25

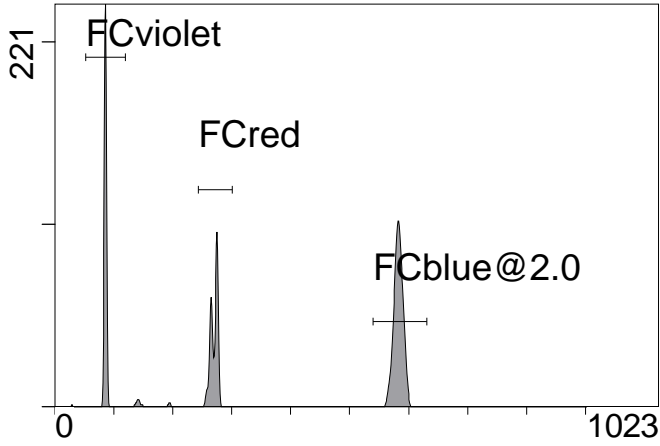
Sample ID: FlowCheck

User ID: duperray

Acquisition Time/Events: 51.6s / 4468 (PROTOCOL)

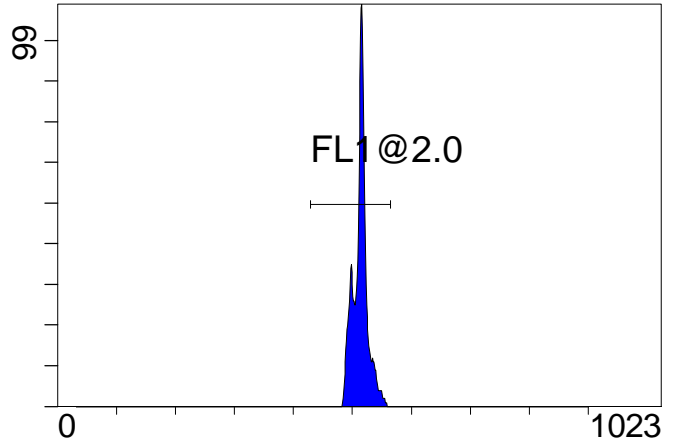
Instrument SN: AN11038 Software Version: Gallios 1.1

[Ungated] FS INT LIN



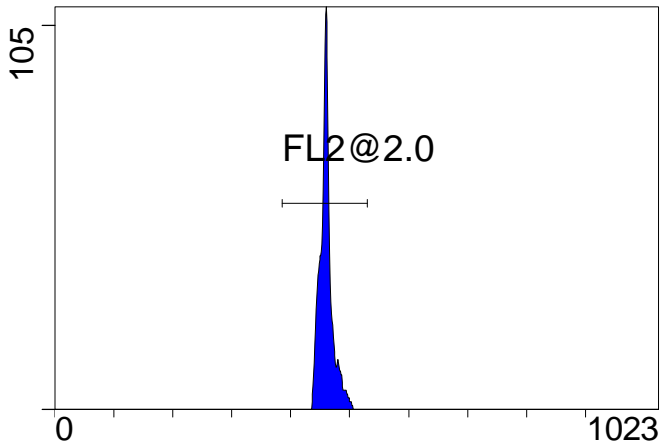
FS INT LIN

(2000) [FCblue@2.0] FL1 INT LIN



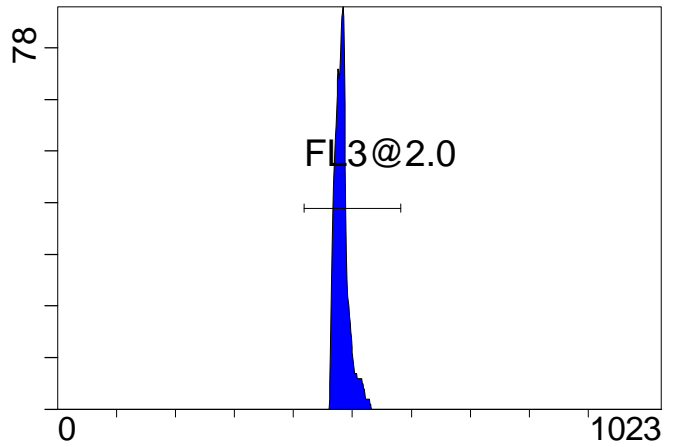
FL1 INT LIN

[FCblue@2.0] FL2 INT LIN



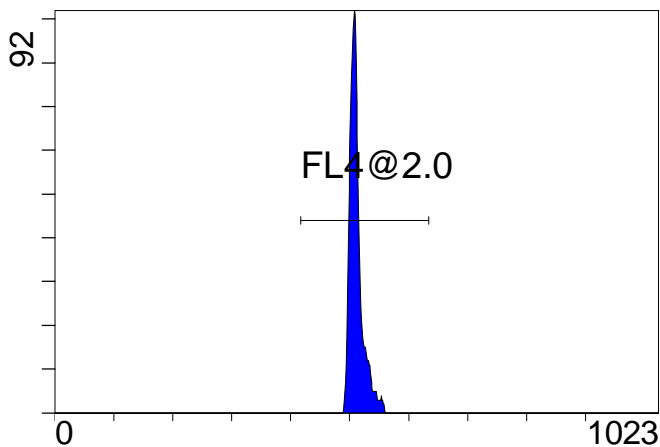
FL2 INT LIN

[FCblue@2.0] FL3 INT LIN



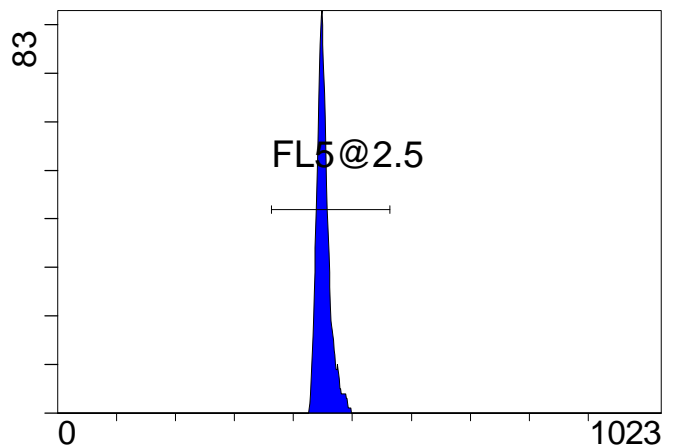
FL3 INT LIN

[FCblue@2.0] FL4 INT LIN



FL4 INT LIN

[FCblue@2.0] FL5 INT LIN



FL5 INT LIN

Institution: IRB

Protocol :Alignment Blue Red Violet_ALIGN.pro

Listmode Replay: New Protocol

Analysis Date: 02-Nov-2010, 09:36:43

Settings File: Alignment Blue Red Violet_ALIGN.pro, 18-Jun-2010, 16:10:42

Listmode File: FlowCheck 2010-11-02 001.LMD

Run Date: 02-Nov-10, 09:34:25

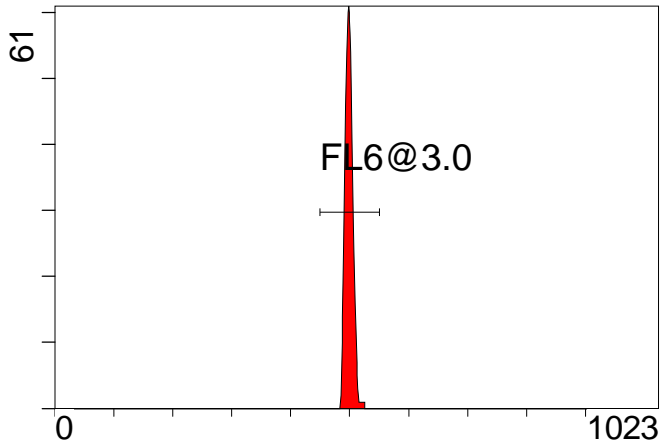
Sample ID: FlowCheck

User ID: duperray

Acquisition Time/Events: 51.6s / 4468 (PROTOCOL)

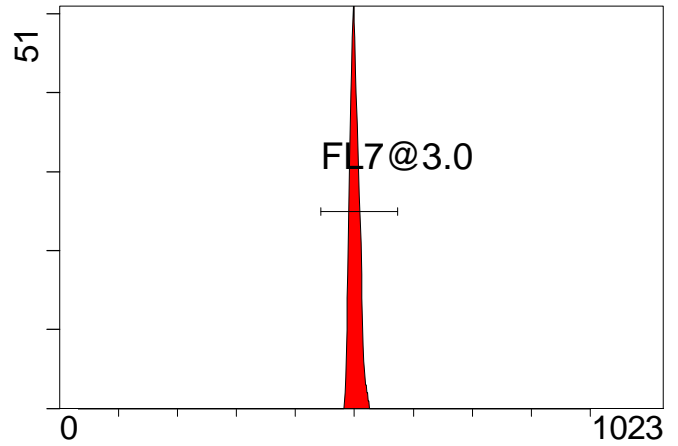
Instrument SN: AN11038 Software Version: Gallios 1.1

[FCred] FL6 INT LIN



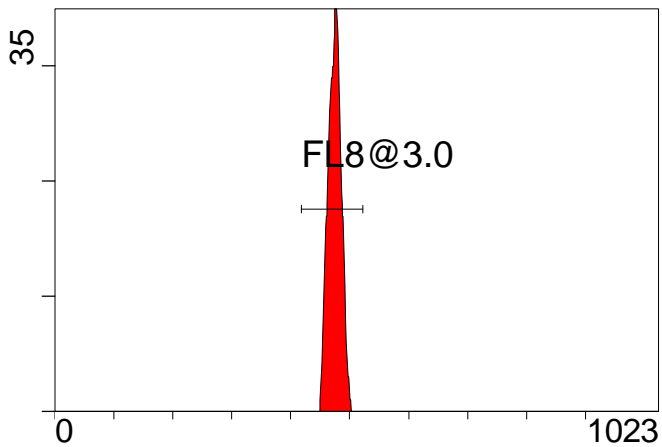
FL6 INT LIN

[FCred] FL7 INT LIN



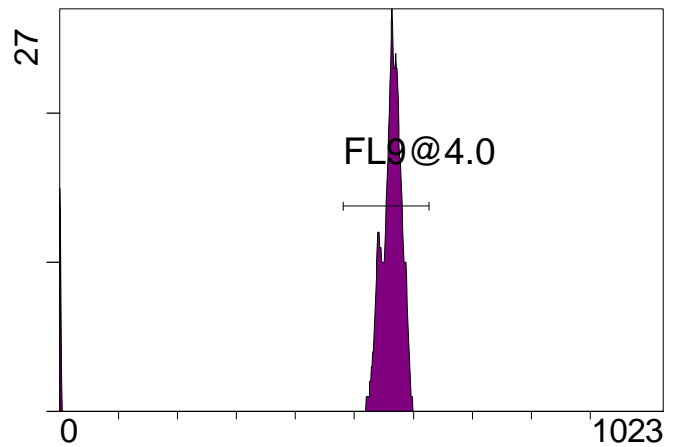
FL7 INT LIN

[FCred] FL8 INT LIN



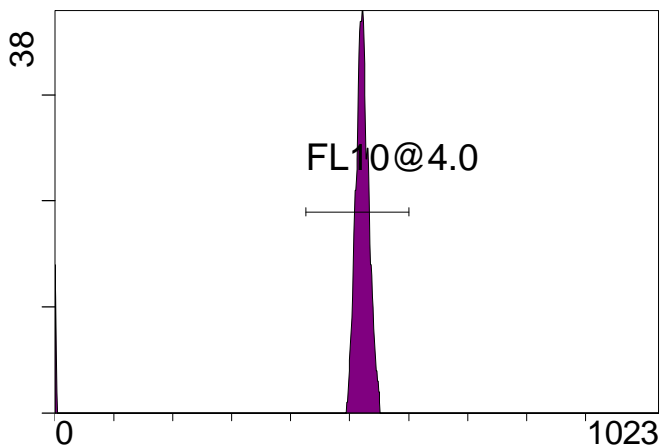
FL8 INT LIN

[FCviolet] FL9 INT LIN



FL9 INT LIN

[FCviolet] FL10 INT LIN



FL10 INT LIN

Statistical Analysis

PROGRAM INFORMATION

File:- FlowCheck 2010-11-02 001.LMD

Gate:- FCblue@2.0 [FCblue@2.0]

Compensation:-

Region	Number	X-Mean	X-HPCV
ALL	2000	513	0.76
ALL	2000	460	0.78
ALL	2000	482	1.79
ALL	2000	511	1.29
ALL	2000	451	1.54
FL1@2.0	1982	514	0.76
FL2@2.0	1989	461	0.78
FL3@2.0	1989	483	1.79
FL4@2.0	1989	512	1.29
FL5@2.5	1989	452	1.54

File:- FlowCheck 2010-11-02 001.LMD

Gate:- FCred [FCred]

Compensation:-

Region	Number	X-Mean	X-HPCV
ALL	1061	472	1.86
ALL	1061	498	1.33
ALL	1061	497	1.19
FL6@3.0	1054	499	1.19
FL7@3.0	1054	501	1.33
FL8@3.0	1051	475	1.86

File:- FlowCheck 2010-11-02 001.LMD

Gate:- FCviolet [FCviolet]

Compensation:-

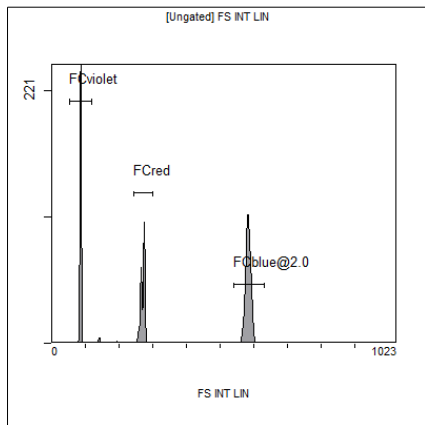
Region	Number	X-Mean	X-HPCV
ALL	1152	530	###
ALL	1152	493	###
FL10@4.0	1082	522	1.24
FL9@4.0	1082	562	0.34

File:- FlowCheck 2010-11-02 001.LMD

Gate:- Ungated

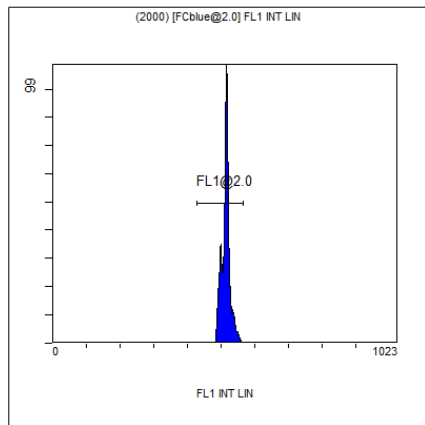
Compensation:-

Region	Number	X-Mean	X-HPCV
ALL	4468	362	1.16
FCblue@2.0	2000	583	1.21
FCred	1061	270	0.51
FCviolet	1152	85.4	1.16



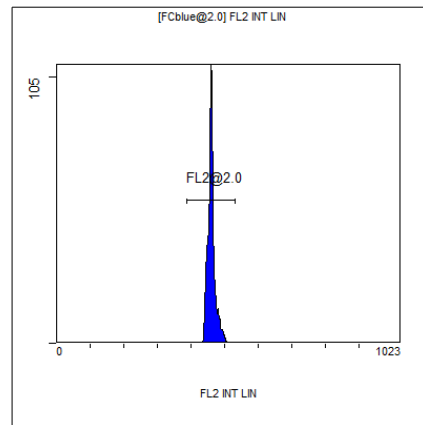
[Ungated] FS INT LIN

Region	Number	HP	X-CV	X-Mean
ALL	4468	1.16		362
FCblue@2.0	2000	1.21		583
FCred	1061	0.51		270
FCviolet	1152	1.16		85.4



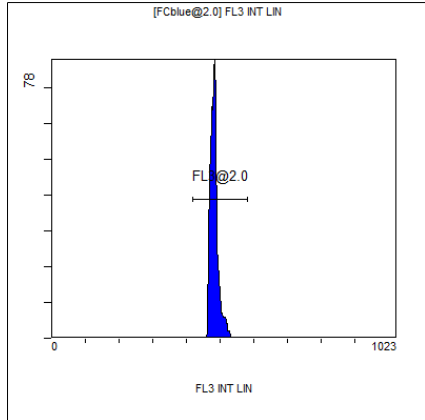
(2000) [FCblue@2.0] FL1 INT LIN

Region	Number	HP	X-CV	X-Mean
ALL	2000	0.76		513
FL1@2.0	1982	0.76		514



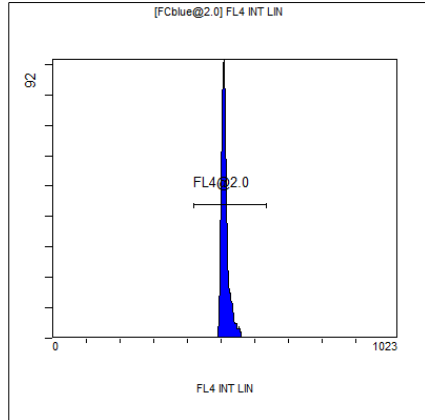
[FCblue@2.0] FL2 INT LIN

Region	Number	HP	X-CV	X-Mean
ALL	2000	0.78		460
FL2@2.0	1989	0.78		461



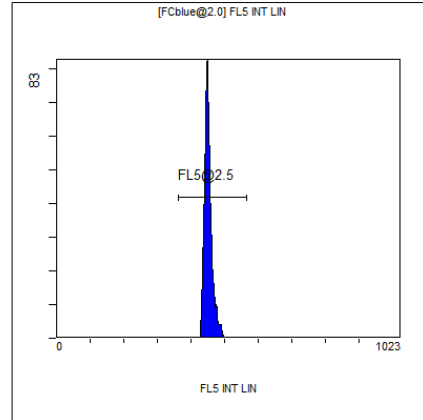
[FCblue@2.0] FL3 INT LIN

Region	Number	HP	X-CV	X-Mean
ALL	2000	1.79		482
FL3@2.0	1989	1.79		483



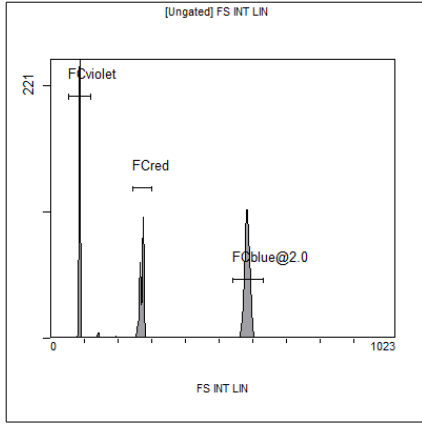
[FCblue@2.0] FL4 INT LIN

Region	Number	HP	X-CV	X-Mean
ALL	2000	1.29		511
FL4@2.0	1989	1.29		512



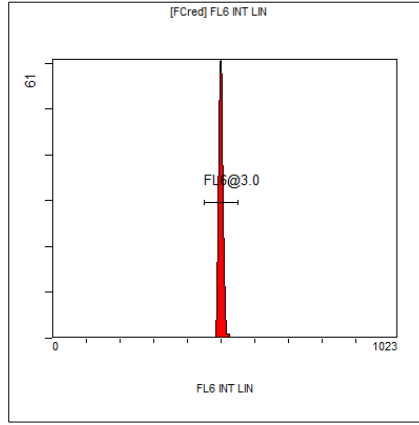
[FCblue@2.0] FL5 INT LIN

Region	Number	HP	X-CV	X-Mean
ALL	2000	1.54		451
FL5@2.5	1989	1.54		452



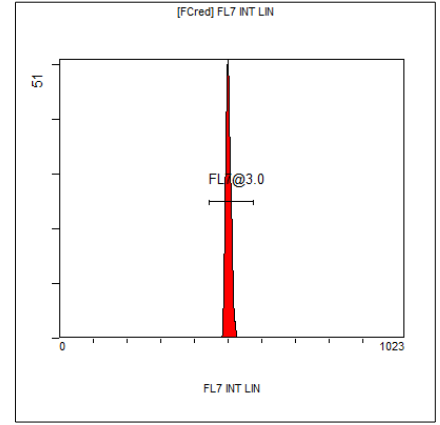
[Ungated] FS INT LIN

Region	Number	HP X-CV	X-Mean
ALL	4468	1.16	362
FCblue@2.0	2000	1.21	583
FCred	1061	0.51	270
FCviolet	1152	1.16	85.4



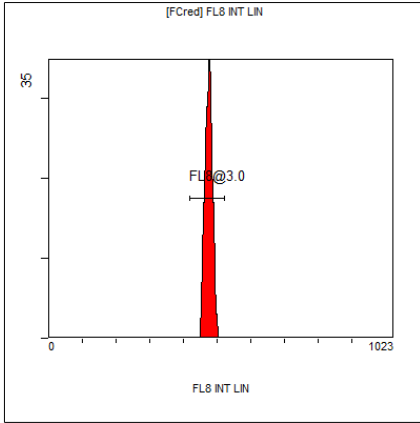
[FCred] FL6 INT LIN

Region	Number	HP X-CV	X-Mean
ALL	1061	1.19	497
FL6@3.0	1054	1.19	499



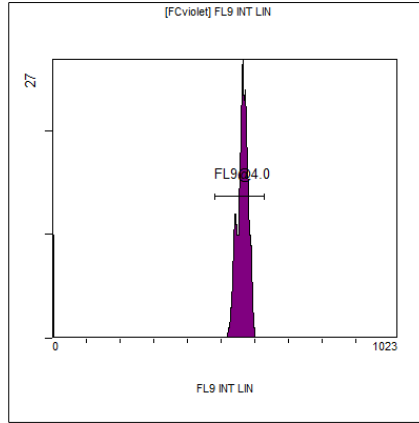
[FCred] FL7 INT LIN

Region	Number	HP X-CV	X-Mean
ALL	1061	1.33	498
FL7@3.0	1054	1.33	501



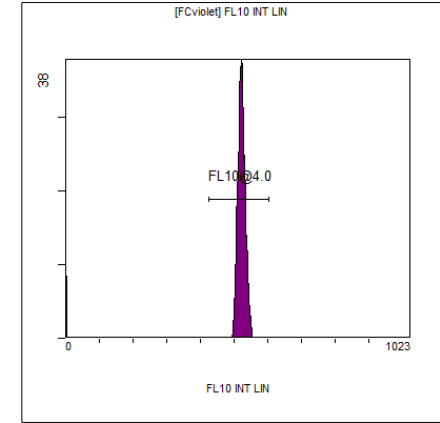
[FCred] FL8 INT LIN

Region	Number	HP X-CV	X-Mean
ALL	1061	1.86	472
FL8@3.0	1051	1.86	475



[FCviolet] FL9 INT LIN

Region	Number	HP X-CV	X-Mean
ALL	1152	###	530
FL9@4.0	1082	0.34	562



[FCviolet] FL10 INT LIN

Region	Number	HP X-CV	X-Mean
ALL	1152	###	493
FL10@4.0	1082	1.24	522