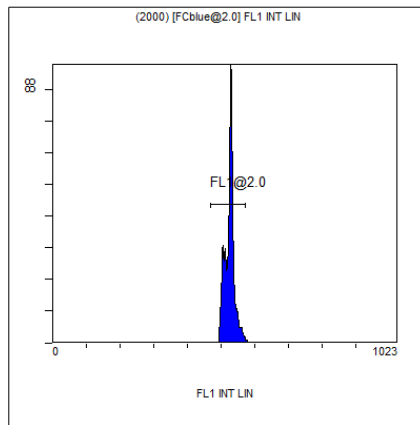


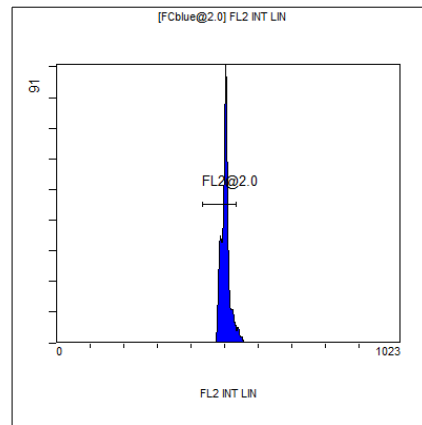
[Ungated] FS INT LIN

Region	Number	HP	X-CV	X-Mean
ALL	4241	1.01		375
FCblue@2.0	2000	1.15		582
FCred	968	0.48		271
FCviolet	1007	1.01		85.9



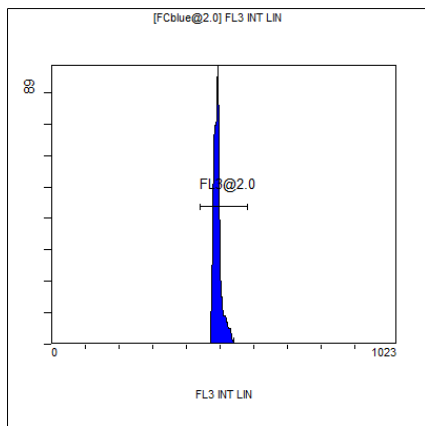
(2000) [FCblue@2.0] FL1 INT LIN

Region	Number	HP	X-CV	X-Mean
ALL	2000	0.80		524
FL1@2.0	1969	0.80		525



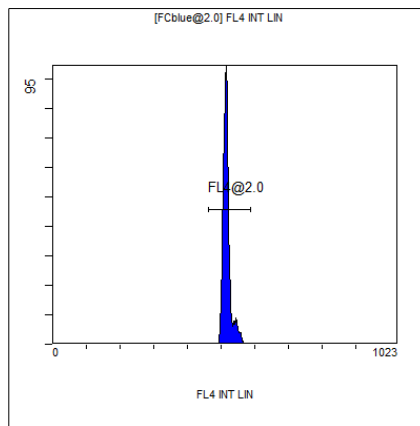
[FCblue@2.0] FL2 INT LIN

Region	Number	HP	X-CV	X-Mean
ALL	2000	0.88		502
FL2@2.0	1896	0.88		501



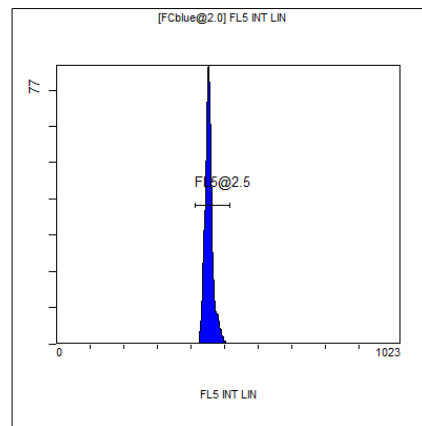
[FCblue@2.0] FL3 INT LIN

Region	Number	HP	X-CV	X-Mean
ALL	2000	1.47		491
FL3@2.0	1992	1.47		493



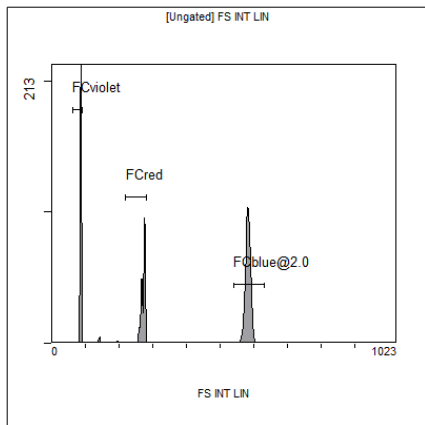
[FCblue@2.0] FL4 INT LIN

Region	Number	HP	X-CV	X-Mean
ALL	2000	1.21		518
FL4@2.0	1990	1.21		517



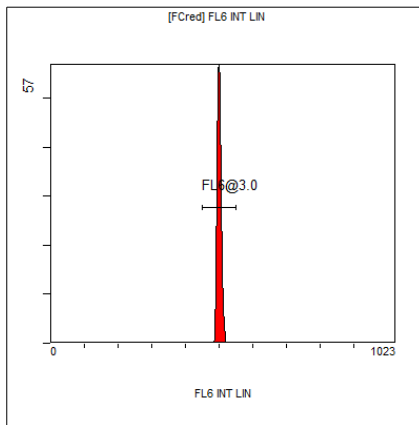
[FCblue@2.0] FL5 INT LIN

Region	Number	HP	X-CV	X-Mean
ALL	2000	1.59		454
FL5@2.5	1989	1.59		454



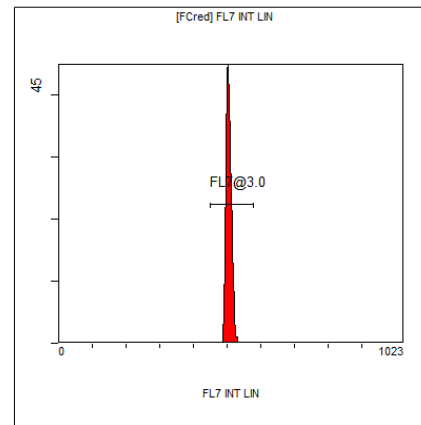
[Ungated] FS INT LIN

Region	Number	HP X-CV	X-Mean
ALL	4241	1.01	375
FCblue@2.0	2000	1.15	582
FCred	968	0.48	271
FCviolet	1007	1.01	85.9



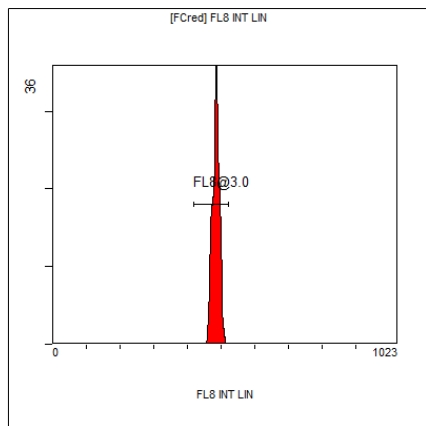
[FCred] FL6 INT LIN

Region	Number	HP X-CV	X-Mean
ALL	968	0.96	495
FL6@3.0	956	0.96	500



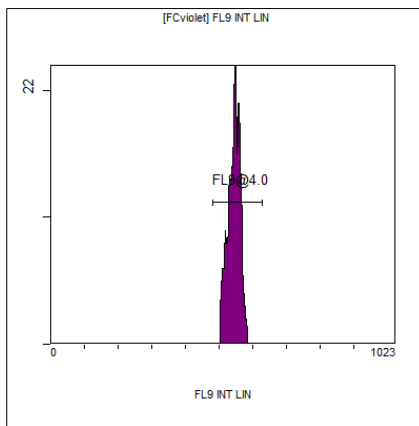
[FCred] FL7 INT LIN

Region	Number	HP X-CV	X-Mean
ALL	968	1.21	499
FL7@3.0	957	1.21	505



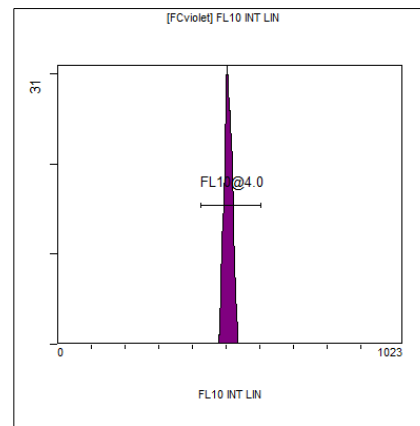
[FCred] FL8 INT LIN

Region	Number	HP X-CV	X-Mean
ALL	968	0.91	479
FL8@3.0	954	0.91	484



[FCviolet] FL9 INT LIN

Region	Number	HP X-CV	X-Mean
ALL	1007	0.62	540
FL9@4.0	1000	0.62	544



[FCviolet] FL10 INT LIN

Region	Number	HP X-CV	X-Mean
ALL	1007	1.93	503
FL10@4.0	1000	1.93	506