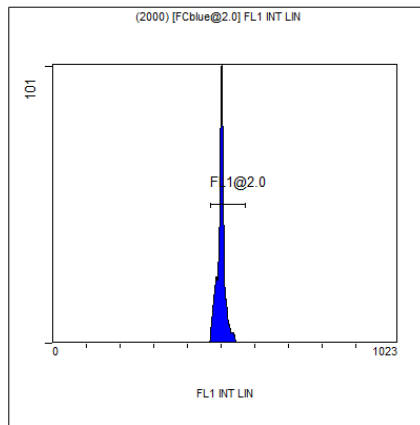


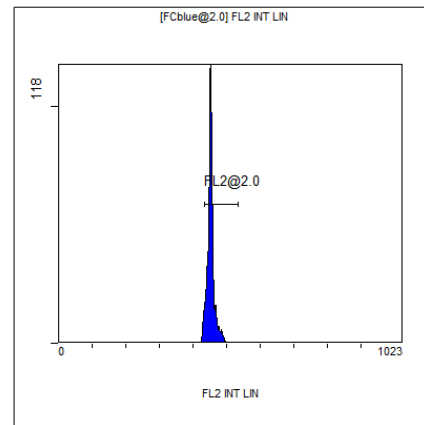
[Ungated] FS INT LIN

Region	Number	HP X-CV	X-Mean
ALL	4827	0.93	350
FCblue@2.0	2000	1.25	577
FCred	1300	0.85	267
FCviolet	1215	0.93	84.8



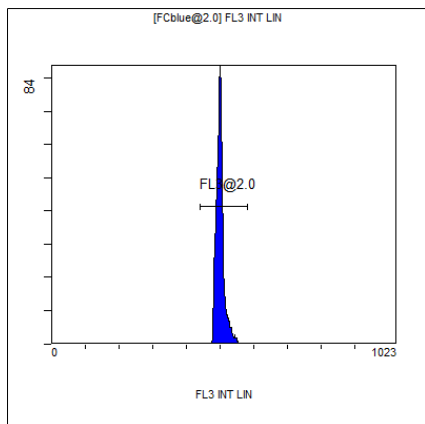
(2000) [FCblue@2.0] FL1 INT LIN

Region	Number	HP X-CV	X-Mean
ALL	2000	0.87	499
FL1@2.0	1987	0.87	500



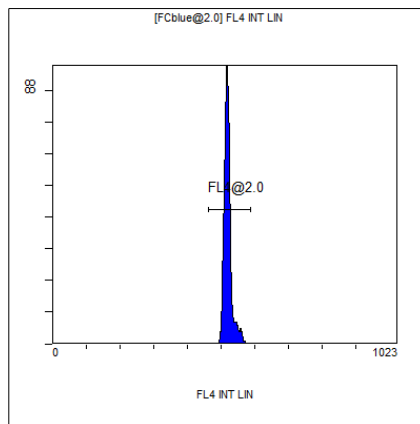
[FCblue@2.0] FL2 INT LIN

Region	Number	HP X-CV	X-Mean
ALL	2000	0.75	452
FL2@2.0	1905	0.75	454



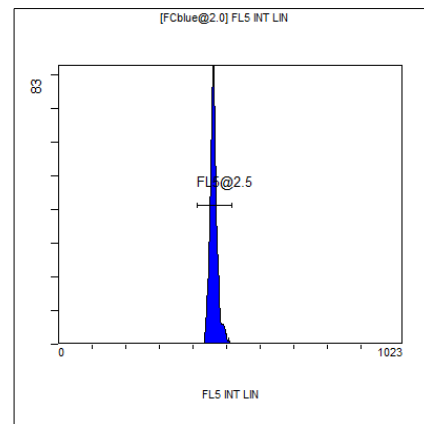
[FCblue@2.0] FL3 INT LIN

Region	Number	HP X-CV	X-Mean
ALL	2000	1.21	500
FL3@2.0	1990	1.21	501



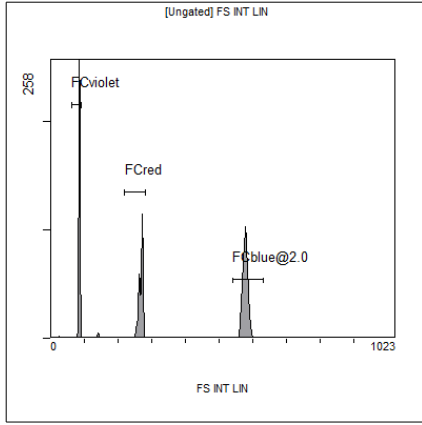
[FCblue@2.0] FL4 INT LIN

Region	Number	HP X-CV	X-Mean
ALL	2000	1.21	520
FL4@2.0	1989	1.21	521



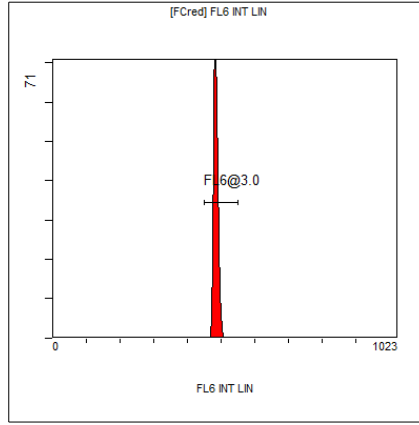
[FCblue@2.0] FL5 INT LIN

Region	Number	HP X-CV	X-Mean
ALL	2000	1.51	462
FL5@2.5	1987	1.51	462



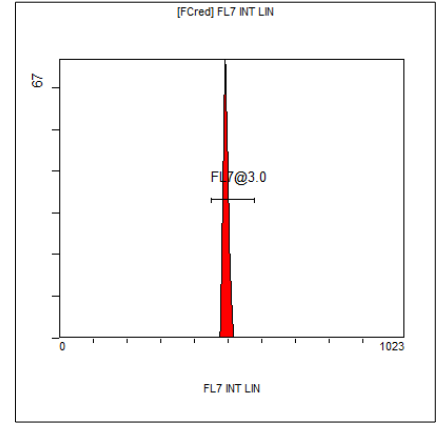
[Ungated] FS INT LIN

Region	Number	HP X-CV	X-Mean
ALL	4827	0.93	350
FCblue@2.0	2000	1.25	577
FCred	1300	0.85	267
FCviolet	1215	0.93	84.8



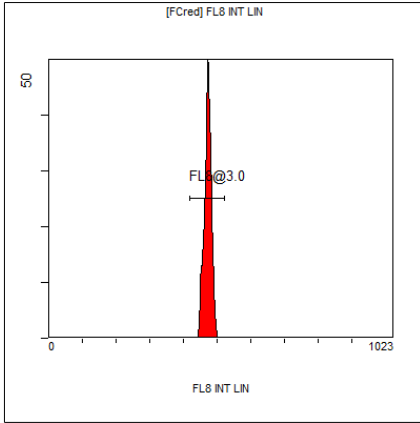
[FCred] FL6 INT LIN

Region	Number	HP X-CV	X-Mean
ALL	1300	1.30	480
FL6@3.0	1287	1.30	484



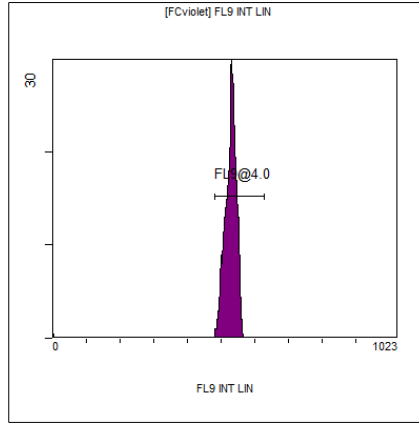
[FCred] FL7 INT LIN

Region	Number	HP X-CV	X-Mean
ALL	1300	1.28	489
FL7@3.0	1288	1.28	494



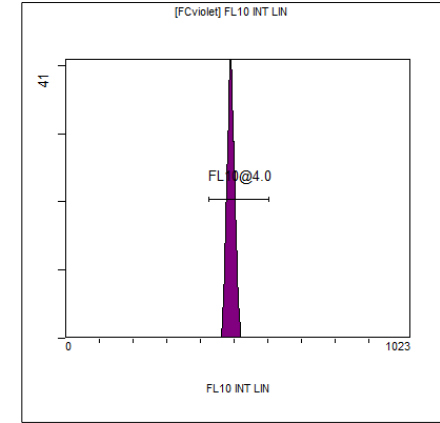
[FCred] FL8 INT LIN

Region	Number	HP X-CV	X-Mean
ALL	1300	1.44	468
FL8@3.0	1288	1.44	472



[FCviolet] FL9 INT LIN

Region	Number	HP X-CV	X-Mean
ALL	1215	1.36	521
FL9@4.0	1194	1.36	528



[FCviolet] FL10 INT LIN

Region	Number	HP X-CV	X-Mean
ALL	1215	1.25	485
FL10@4.0	1200	1.25	490