

Institution: IRB

Run Date: 14-Mar-11, 09:07:00

Protocol :Alignment Blue Red Violet_ALIGN.pro

Sample ID: FlowCheck

Listmode Replay: New Protocol

User ID: duperray

Analysis Date: 14-Mar-2011, 09:08:28

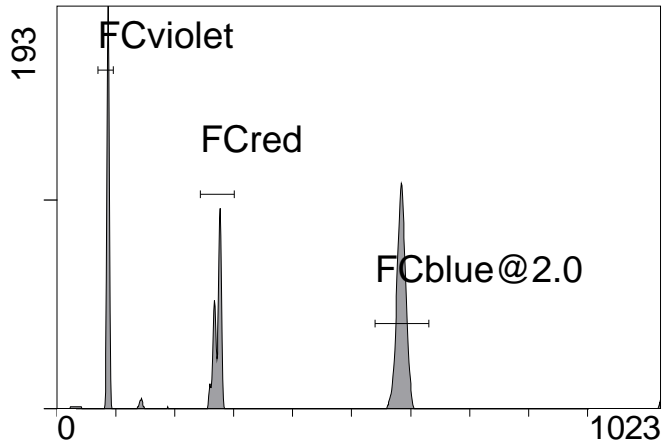
Acquisition Time/Events: 15.6s / 4241 (PROTOCOL)

Settings File: Alignment Blue Red Violet_ALIGN.pro, 29-Nov-2010, 09:40:25

Listmode File: FlowCheck 2011-03-14 001.LMD

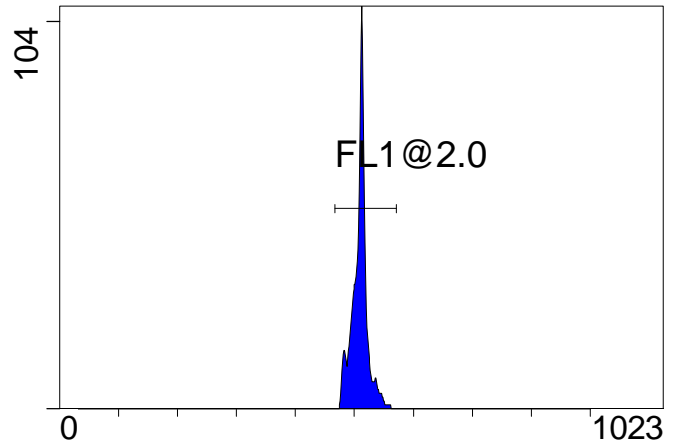
Instrument SN: AN11038 Software Version: Gallios 1.1

[Ungated] FS INT LIN



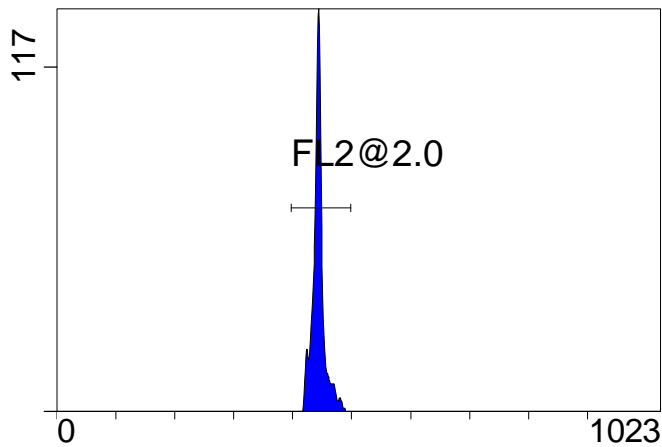
FS INT LIN

(2000) [FCblue@2.0] FL1 INT LIN



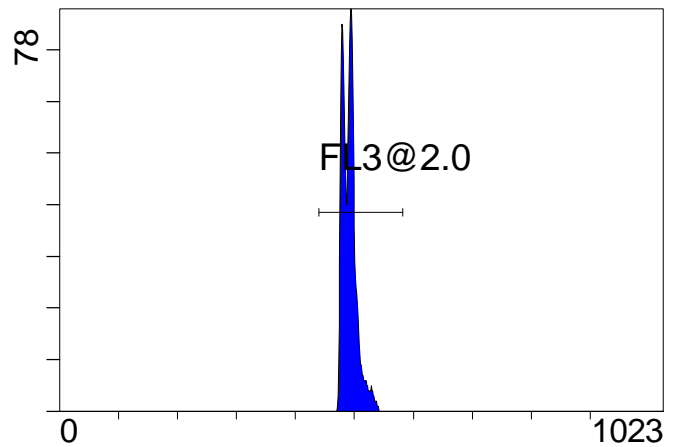
FL1 INT LIN

[FCblue@2.0] FL2 INT LIN



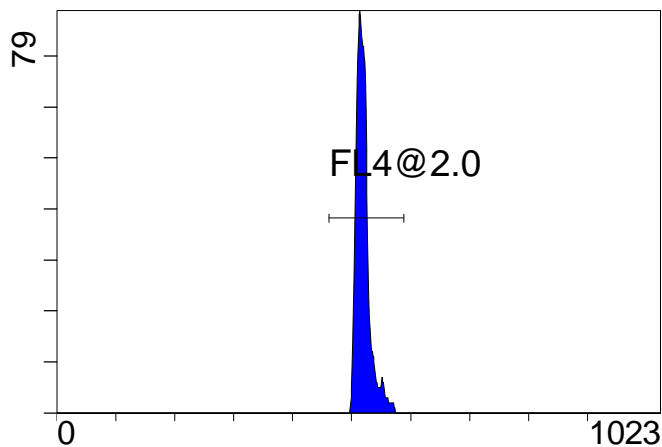
FL2 INT LIN

[FCblue@2.0] FL3 INT LIN



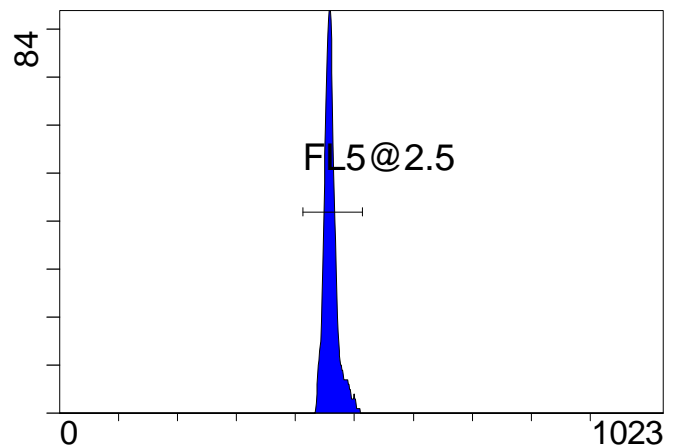
FL3 INT LIN

[FCblue@2.0] FL4 INT LIN



FL4 INT LIN

[FCblue@2.0] FL5 INT LIN



FL5 INT LIN

Institution: IRB

Protocol :Alignment Blue Red Violet_ALIGN.pro

Listmode Replay: New Protocol

Analysis Date: 14-Mar-2011, 09:08:28

Settings File: Alignment Blue Red Violet_ALIGN.pro, 29-Nov-2010, 09:40:25

Listmode File: FlowCheck 2011-03-14 001.LMD

Run Date: 14-Mar-11, 09:07:00

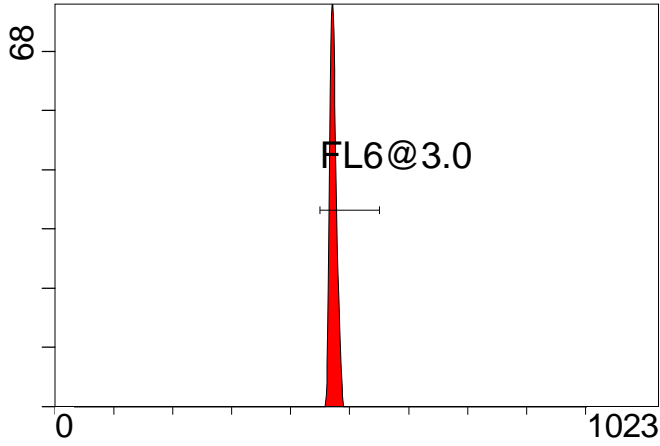
Sample ID: FlowCheck

User ID: duperray

Acquisition Time/Events: 15.6s / 4241 (PROTOCOL)

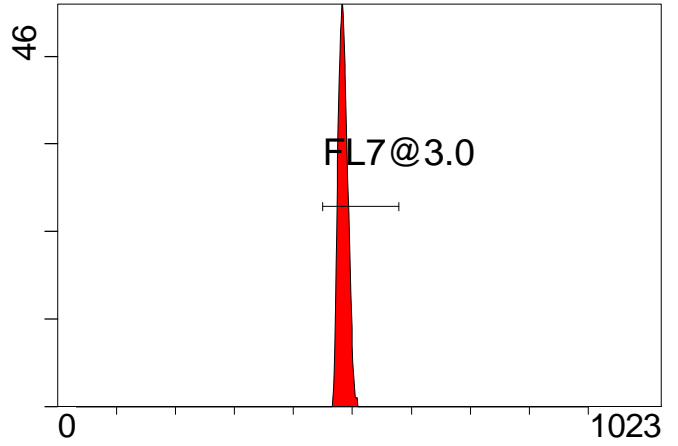
Instrument SN: AN11038 Software Version: Gallios 1.1

[FCred] FL6 INT LIN



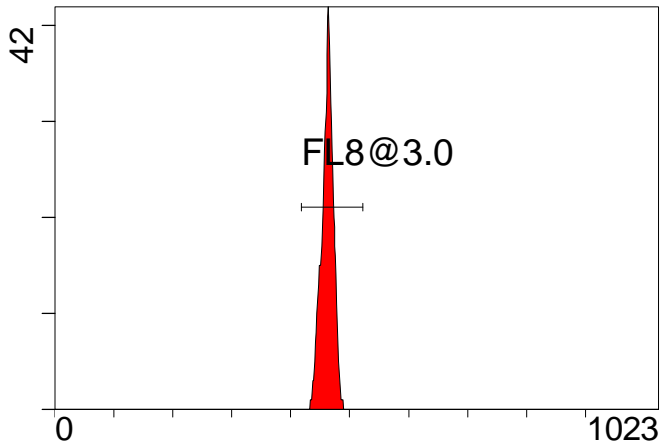
FL6 INT LIN

[FCred] FL7 INT LIN



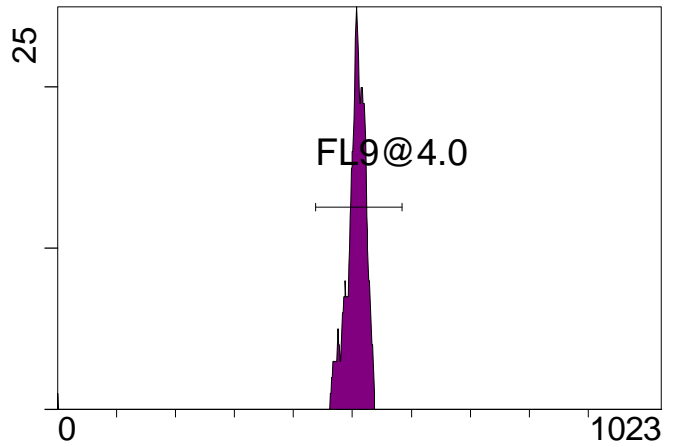
FL7 INT LIN

[FCred] FL8 INT LIN



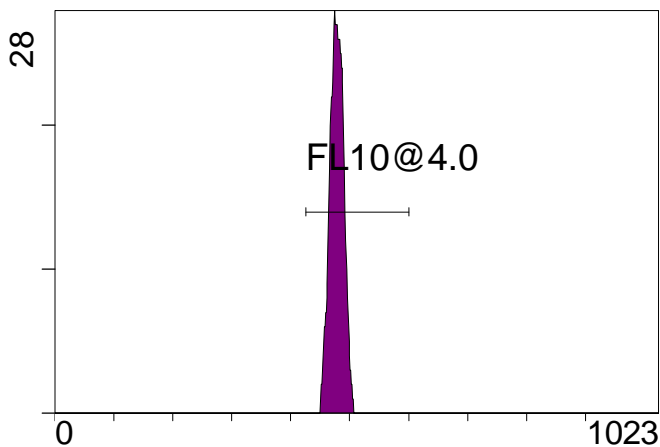
FL8 INT LIN

[FCviolet] FL9 INT LIN



FL9 INT LIN

[FCviolet] FL10 INT LIN



FL10 INT LIN

Statistical Analysis

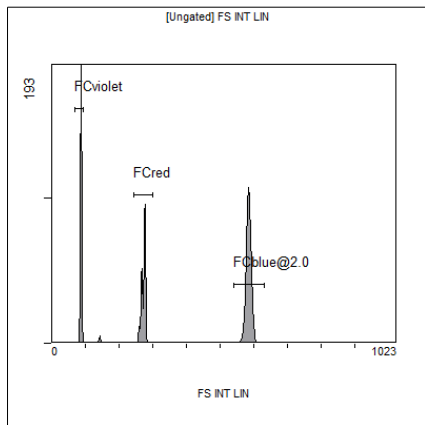
PROGRAM INFORMATION

File:- FlowCheck 2011-03-14 001.LMD				
Gate:- FCblue@2.0 [FCblue@2.0]				
Compensation:-				
Region	Number	X-Mean	X-HPCV	
ALL	2000	444	0.71	
ALL	2000	493	0.76	
ALL	2000	520	1.54	
ALL	2000	460	1.56	
ALL	2000	510	0.59	
FL1@2.0	1993	510	0.59	
FL2@2.0	1991	445	0.71	
FL3@2.0	1995	493	0.76	
FL4@2.0	1993	521	1.54	
FL5@2.5	1991	461	1.56	

File:- FlowCheck 2011-03-14 001.LMD				
Gate:- FCred [FCred]				
Compensation:-				
Region	Number	X-Mean	X-HPCV	
ALL	1017	461	1.40	
ALL	1017	483	1.27	
ALL	1017	471	0.93	
FL6@3.0	1003	473	0.93	
FL7@3.0	1008	485	1.27	
FL8@3.0	1012	462	1.40	

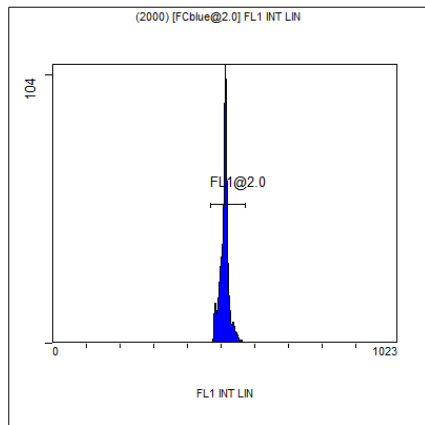
File:- FlowCheck 2011-03-14 001.LMD				
Gate:- FCviolet [FCviolet]				
Compensation:-				
Region	Number	X-Mean	X-HPCV	
ALL	938	500	0.80	
ALL	938	474	2.36	
FL10@4.0	928	478	2.36	
FL9@4.0	928	505	0.80	

File:- FlowCheck 2011-03-14 001.LMD				
Gate:- Ungated				
Compensation:-				
Region	Number	X-Mean	X-HPCV	
ALL	4241	379	1.13	
FCblue@2.0	2000	584	1.13	
FCred	1017	272	0.56	
FCviolet	938	86.7	1.13	



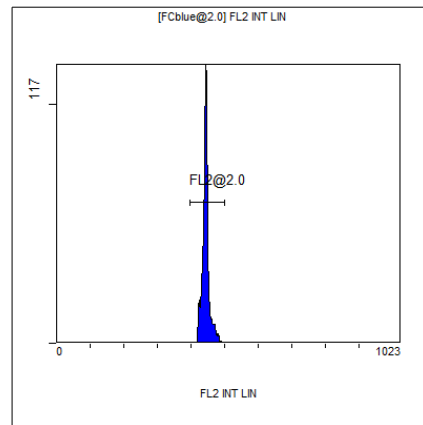
[Ungated] FS INT LIN

Region	Number	HP	X-CV	X-Mean
ALL	4241	1.13		379
FCblue@2.0	2000	1.13		584
FCred	1017	0.56		272
FCviolet	938	1.13		86.7



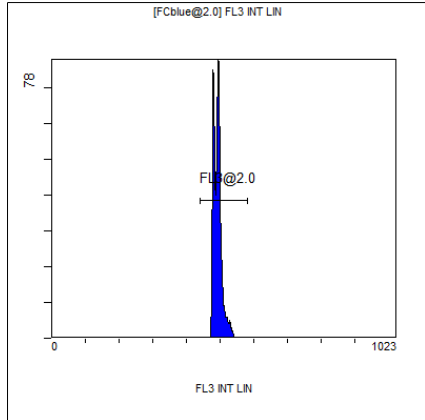
(2000) [FCblue@2.0] FL1 INT LIN

Region	Number	HP	X-CV	X-Mean
ALL	2000	0.59		510
FL1@2.0	1993	0.59		510



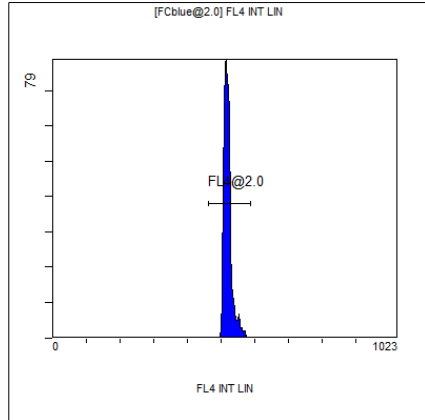
[FCblue@2.0] FL2 INT LIN

Region	Number	HP	X-CV	X-Mean
ALL	2000	0.71		444
FL2@2.0	1991	0.71		445



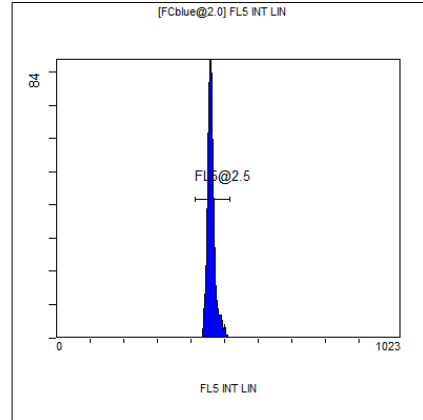
[FCblue@2.0] FL3 INT LIN

Region	Number	HP	X-CV	X-Mean
ALL	2000	0.76		493
FL3@2.0	1995	0.76		493



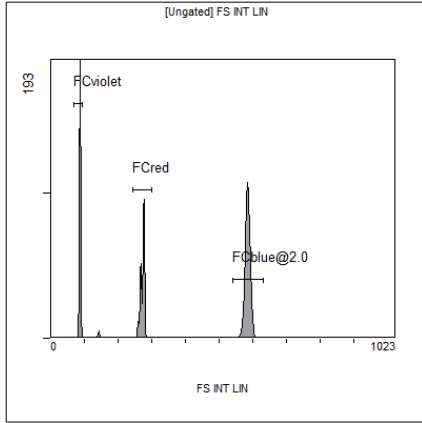
[FCblue@2.0] FL4 INT LIN

Region	Number	HP	X-CV	X-Mean
ALL	2000	1.54		520
FL4@2.0	1993	1.54		521



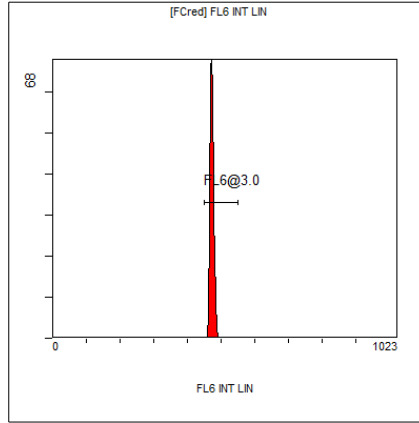
[FCblue@2.0] FL5 INT LIN

Region	Number	HP	X-CV	X-Mean
ALL	2000	1.56		460
FL5@2.5	1991	1.56		461



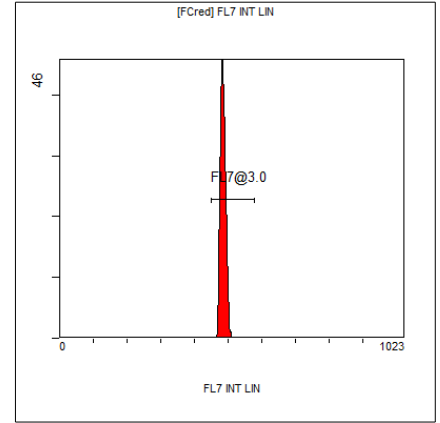
[Ungated] FS INT LIN

Region	Number	HP X-CV	X-Mean
ALL	4241	1.13	379
FCblue@2.0	2000	1.13	584
FCred	1017	0.56	272
FCviolet	938	1.13	86.7



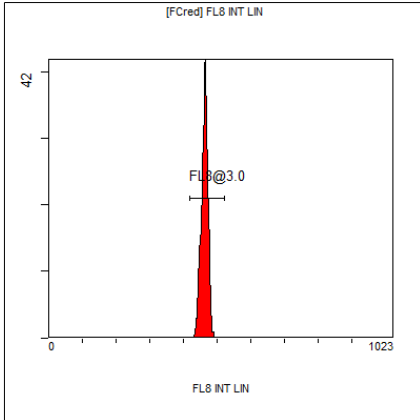
[FCred] FL6 INT LIN

Region	Number	HP X-CV	X-Mean
ALL	1017	0.93	471
FL6@3.0	1003	0.93	473



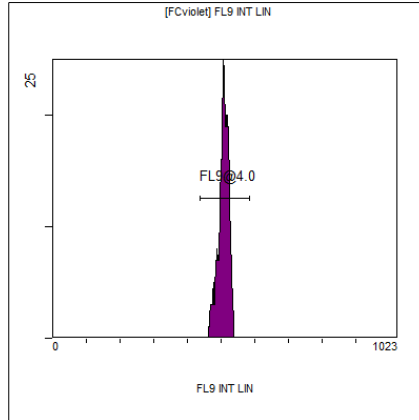
[FCred] FL7 INT LIN

Region	Number	HP X-CV	X-Mean
ALL	1017	1.27	483
FL7@3.0	1008	1.27	485



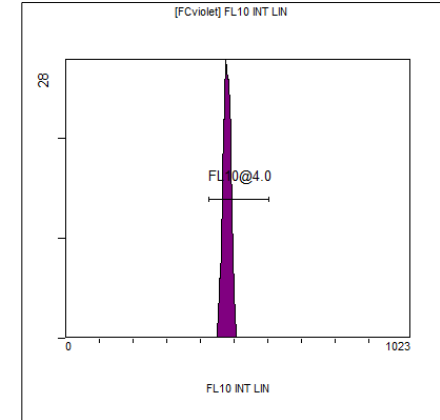
[FCred] FL8 INT LIN

Region	Number	HP X-CV	X-Mean
ALL	1017	1.40	461
FL8@3.0	1012	1.40	462



[FCviolet] FL9 INT LIN

Region	Number	HP X-CV	X-Mean
ALL	938	0.80	500
FL9@4.0	928	0.80	505



[FCviolet] FL10 INT LIN

Region	Number	HP X-CV	X-Mean
ALL	938	2.36	474
FL10@4.0	928	2.36	478