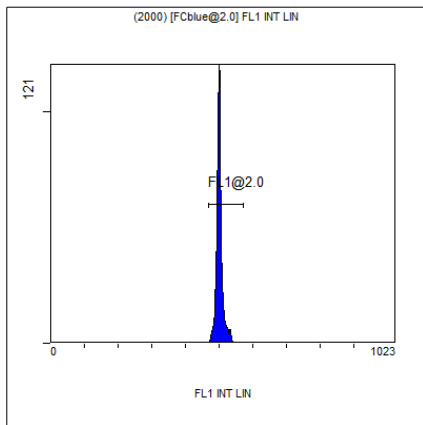


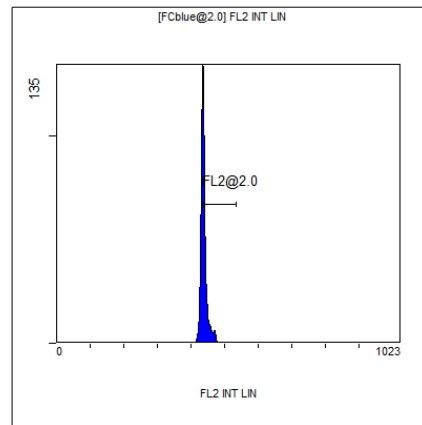
[Ungated] FS INT LIN

Region	Number	HP X-CV	X-Mean
ALL	4135	1.21	383
FCblue@2.0	2000	1.15	582
FCred	964	0.59	271
FCviolet	918	1.21	86.2



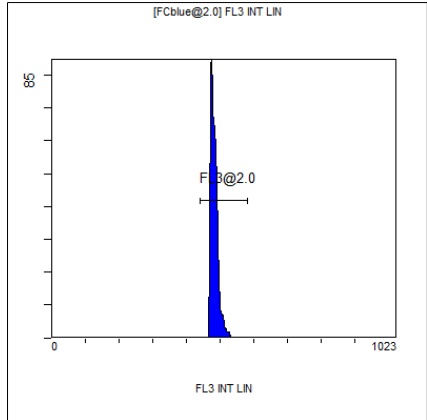
(2000) [FCblue@2.0] FL1 INT LIN

Region	Number	HP X-CV	X-Mean
ALL	2000	0.83	501
FL1@2.0	1994	0.83	501



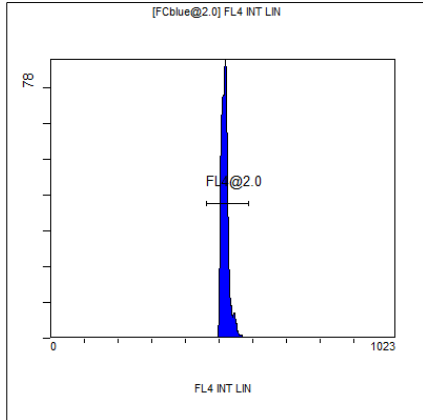
[FCblue@2.0] FL2 INT LIN

Region	Number	HP X-CV	X-Mean
ALL	2000	0.87	438
FL2@2.0	1358	0.58	443



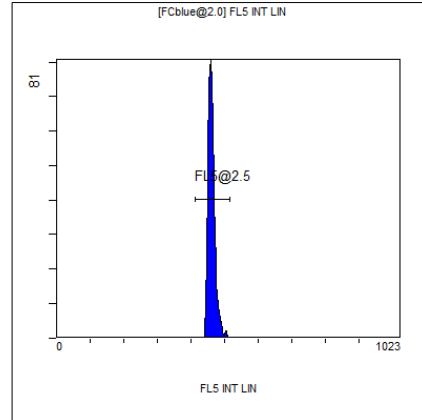
[FCblue@2.0] FL3 INT LIN

Region	Number	HP X-CV	X-Mean
ALL	2000	1.89	483
FL3@2.0	1995	1.89	483



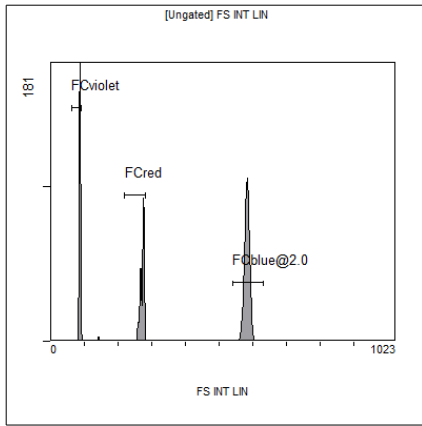
[FCblue@2.0] FL4 INT LIN

Region	Number	HP X-CV	X-Mean
ALL	2000	1.70	519
FL4@2.0	1995	1.70	518



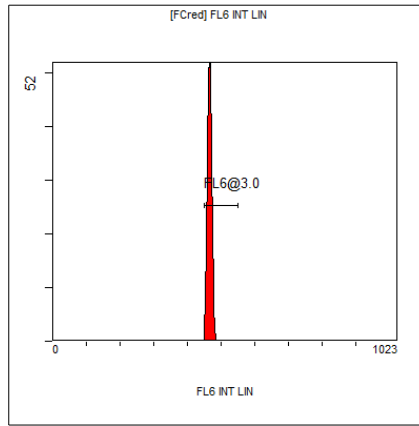
[FCblue@2.0] FL5 INT LIN

Region	Number	HP X-CV	X-Mean
ALL	2000	1.68	463
FL5@2.5	1990	1.68	462



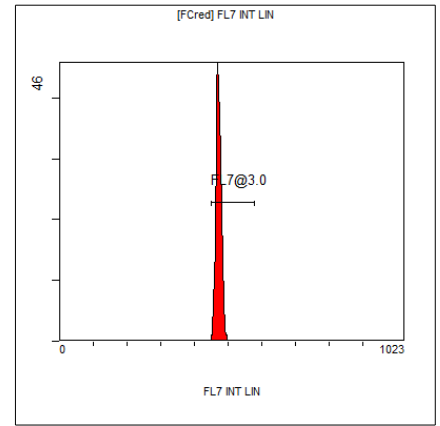
[Ungated] FS INT LIN

Region	Number	HP X-CV	X-Mean
ALL	4135	1.21	383
FCblue@2.0	2000	1.15	582
FCred	964	0.59	271
FCviolet	918	1.21	86.2



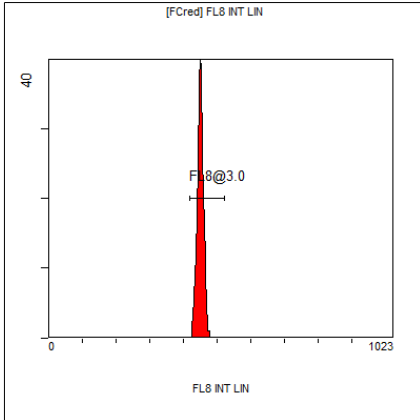
[FCred] FL6 INT LIN

Region	Number	HP X-CV	X-Mean
ALL	964	1.11	462
FL6@3.0	936	1.11	466



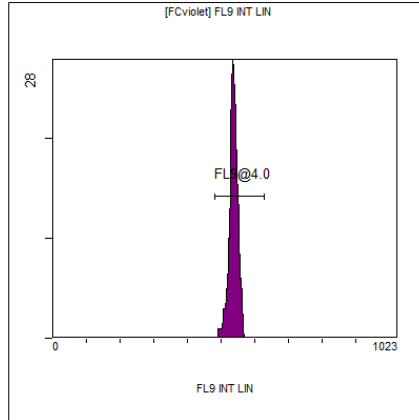
[FCred] FL7 INT LIN

Region	Number	HP X-CV	X-Mean
ALL	964	1.05	468
FL7@3.0	941	1.05	472



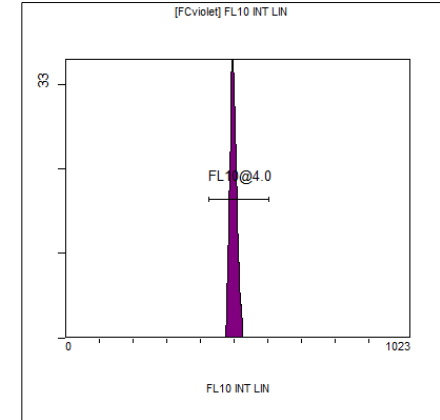
[FCred] FL8 INT LIN

Region	Number	HP X-CV	X-Mean
ALL	964	1.18	447
FL8@3.0	948	1.18	450



[FCviolet] FL9 INT LIN

Region	Number	HP X-CV	X-Mean
ALL	918	1.39	530
FL9@4.0	904	1.39	536



[FCviolet] FL10 INT LIN

Region	Number	HP X-CV	X-Mean
ALL	918	1.54	494
FL10@4.0	906	1.54	497