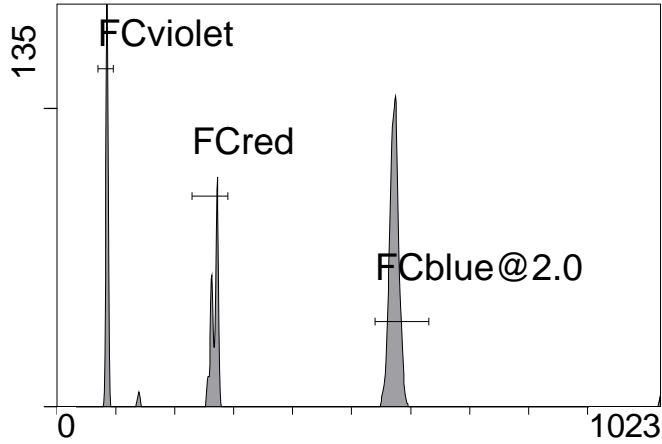


Institution: IRB
Protocol :Alignment Blue Red Violet_ALIGN.pro
Listmode Replay: New Protocol
Analysis Date: 18-Apr-2011, 09:08:01
Settings File: Alignment Blue Red Violet_ALIGN.pro, 29-Nov-2010, 10:40:25
Listmode File: FlowCheck 2011-04-18 001.LMD

Run Date: 18-Apr-11, 09:06:27
Sample ID: FlowCheck
User ID: duperray
Acquisition Time/Events: 6.0s / 3709 (PROTOCOL)

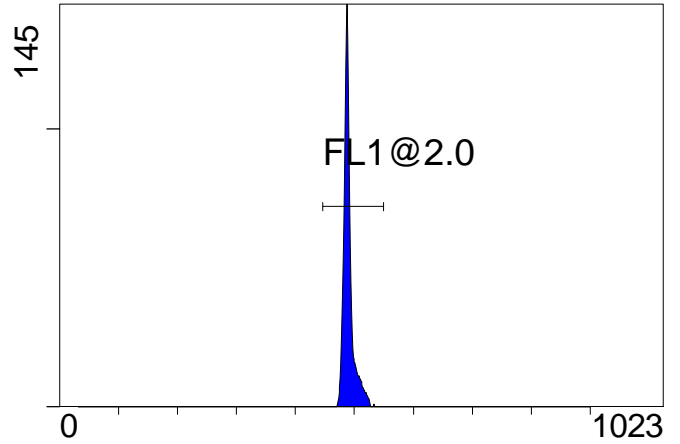
Instrument SN: AN11038 Software Version: Gallios 1.1

[Ungated] FS INT LIN



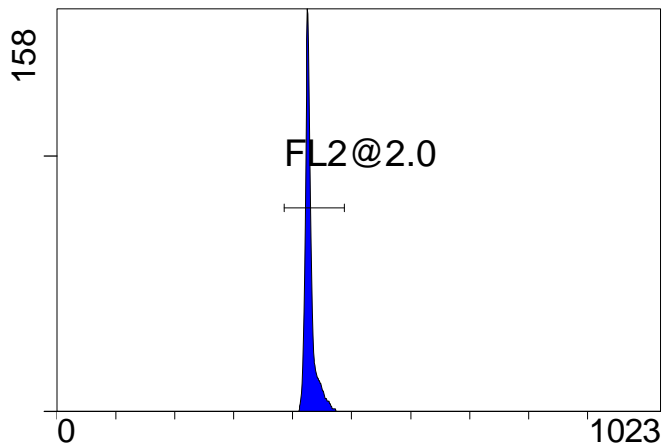
FS INT LIN

(2000) [FCblue@2.0] FL1 INT LIN



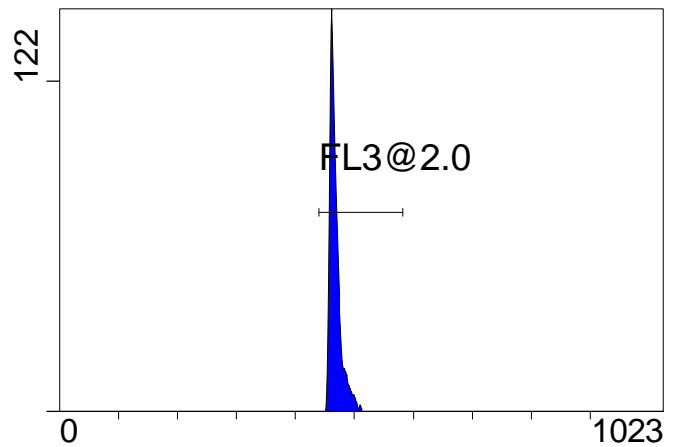
FL1 INT LIN

[FCblue@2.0] FL2 INT LIN



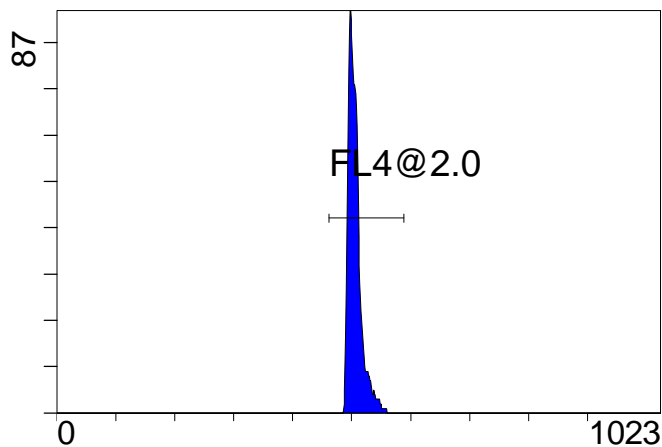
FL2 INT LIN

[FCblue@2.0] FL3 INT LIN



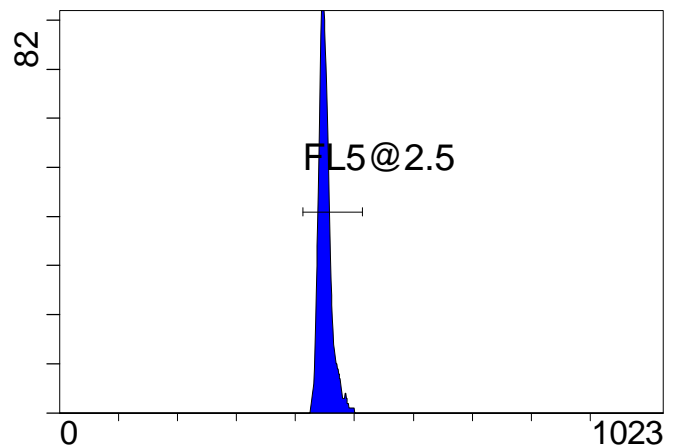
FL3 INT LIN

[FCblue@2.0] FL4 INT LIN



FL4 INT LIN

[FCblue@2.0] FL5 INT LIN



FL5 INT LIN

Institution: IRB

Protocol :Alignment Blue Red Violet_ALIGN.pro

Listmode Replay: New Protocol

Analysis Date: 18-Apr-2011, 09:08:01

Settings File: Alignment Blue Red Violet_ALIGN.pro, 29-Nov-2010, 10:40:25

Listmode File: FlowCheck 2011-04-18 001.LMD

Run Date: 18-Apr-11, 09:06:27

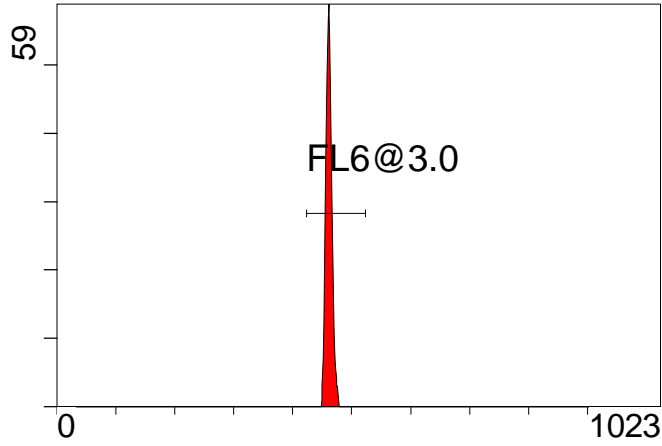
Sample ID: FlowCheck

User ID: duperray

Acquisition Time/Events: 6.0s / 3709 (PROTOCOL)

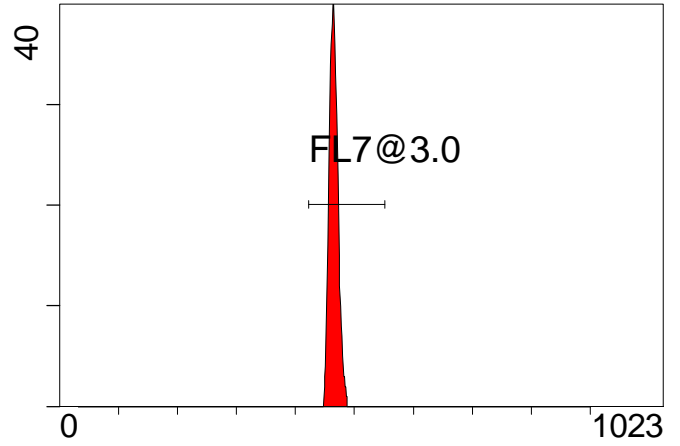
Instrument SN: AN11038 Software Version: Gallios 1.1

[FCred] FL6 INT LIN



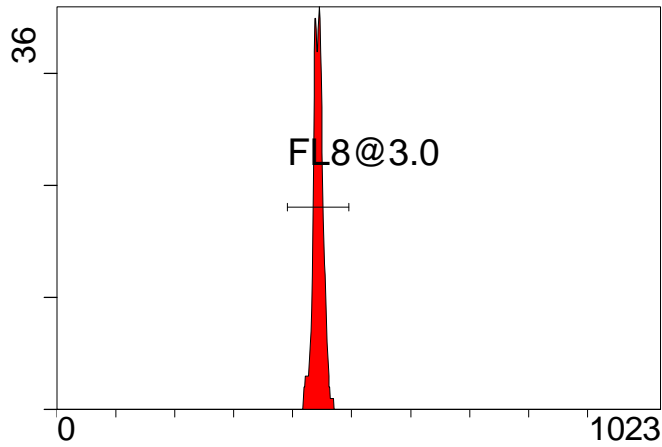
FL6 INT LIN

[FCred] FL7 INT LIN



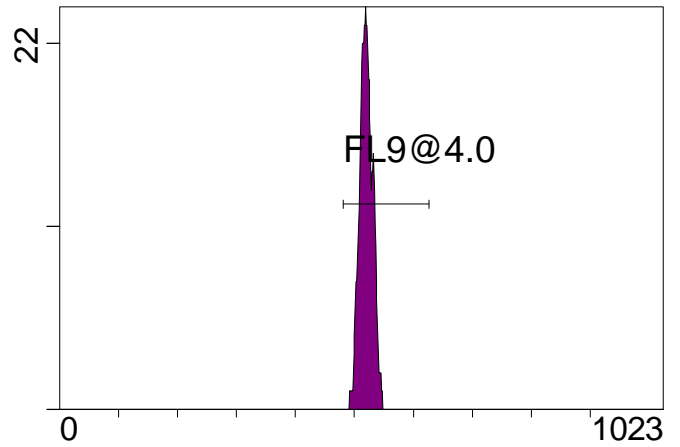
FL7 INT LIN

[FCred] FL8 INT LIN



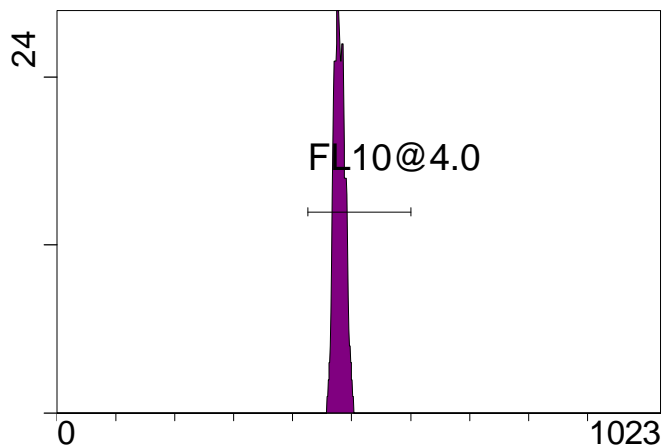
FL8 INT LIN

[FCviolet] FL9 INT LIN



FL9 INT LIN

[FCviolet] FL10 INT LIN



FL10 INT LIN

Statistical Analysis

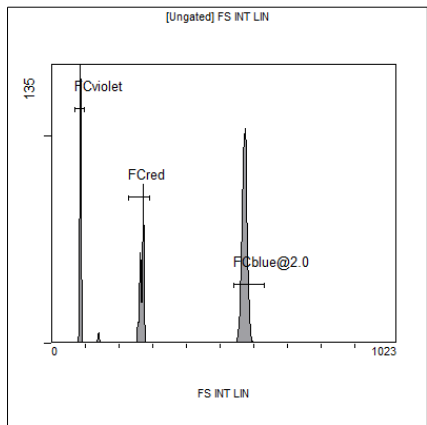
PROGRAM INFORMATION

File:- FlowCheck 2011-04-18 001.LMD				
Gate:- FCblue@2.0 [FCblue@2.0]				
Compensation:-				
Region	Number	X-Mean	X-HPCV	
ALL	2000	490	0.67	
ALL	2000	429	0.73	
ALL	2000	468	1.01	
ALL	2000	506	1.55	
ALL	2000	451	1.60	
FL1@2.0	1988	491	0.67	
FL2@2.0	1988	430	0.73	
FL3@2.0	1987	469	1.01	
FL4@2.0	1986	507	1.55	
FL5@2.5	1986	451	1.60	

File:- FlowCheck 2011-04-18 001.LMD				
Gate:- FCred [FCred]				
Compensation:-				
Region	Number	X-Mean	X-HPCV	
ALL	813	442	1.32	
ALL	813	460	0.98	
ALL	813	464	1.48	
FL6@3.0	810	462	0.98	
FL7@3.0	810	466	1.48	
FL8@3.0	809	443	1.32	

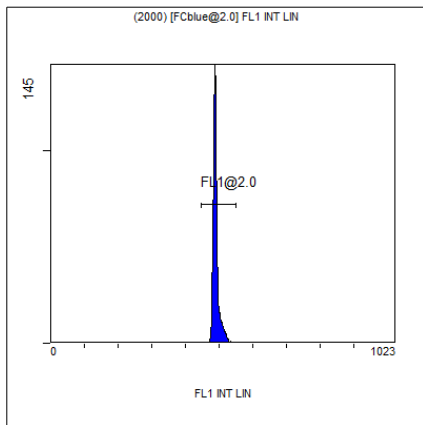
File:- FlowCheck 2011-04-18 001.LMD				
Gate:- FCviolet [FCviolet]				
Compensation:-				
Region	Number	X-Mean	X-HPCV	
ALL	694	514	1.49	
ALL	694	479	0.44	
FL10@4.0	689	481	0.44	
FL9@4.0	682	520	1.49	

File:- FlowCheck 2011-04-18 001.LMD				
Gate:- Ungated				
Compensation:-				
Region	Number	X-Mean	X-HPCV	
ALL	3709	405	1.45	
FCblue@2.0	2000	572	0.97	
FCred	813	267	0.60	
FCviolet	694	85	1.45	



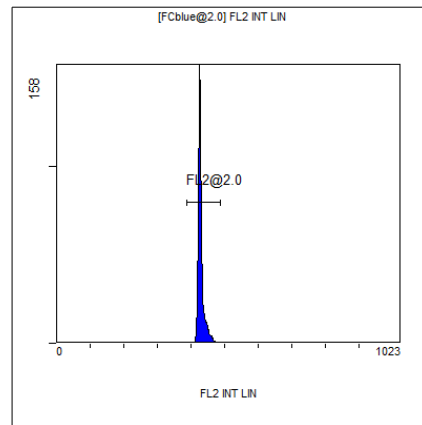
[Ungated] FS INT LIN

Region	Number	HP X-CV	X-Mean
ALL	3709	1.45	405
FCblue@2.0	2000	0.97	572
FCred	813	0.60	267
FCviolet	694	1.45	85



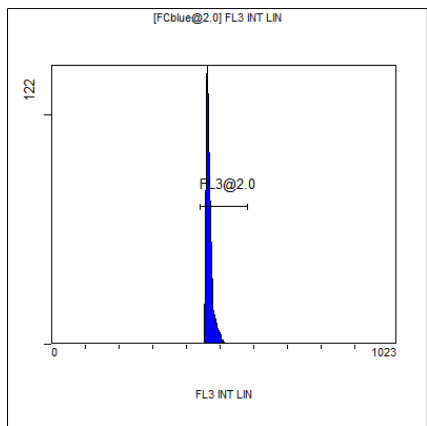
(2000) [FCblue@2.0] FL1 INT LIN

Region	Number	HP X-CV	X-Mean
ALL	2000	0.67	490
FL1@2.0	1988	0.67	491



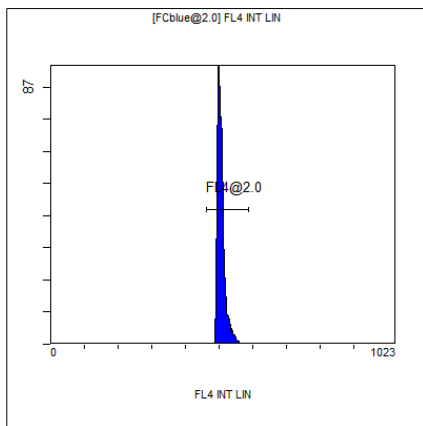
[FCblue@2.0] FL2 INT LIN

Region	Number	HP X-CV	X-Mean
ALL	2000	0.73	429
FL2@2.0	1988	0.73	430



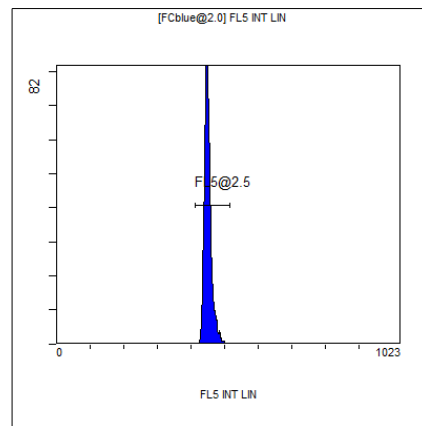
[FCblue@2.0] FL3 INT LIN

Region	Number	HP X-CV	X-Mean
ALL	2000	1.01	468
FL3@2.0	1987	1.01	469



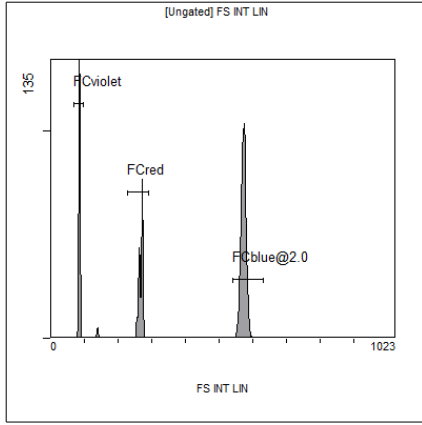
[FCblue@2.0] FL4 INT LIN

Region	Number	HP X-CV	X-Mean
ALL	2000	1.55	506
FL4@2.0	1986	1.55	507



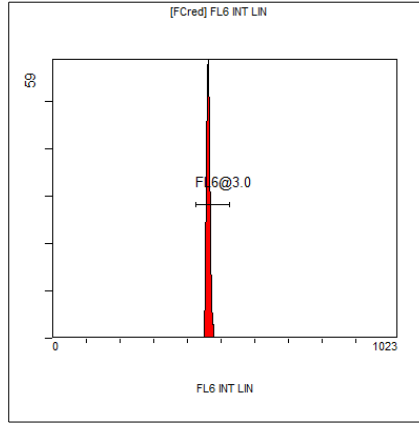
[FCblue@2.0] FL5 INT LIN

Region	Number	HP X-CV	X-Mean
ALL	2000	1.60	451
FL5@2.5	1986	1.60	451



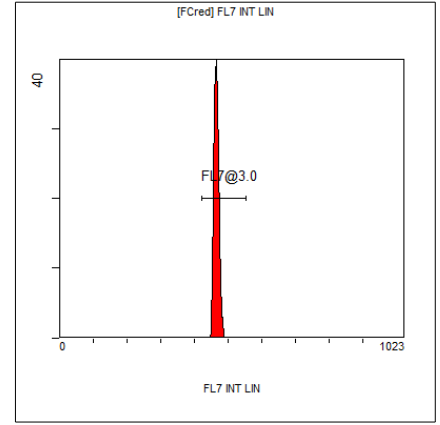
[Ungated] FS INT LIN

Region	Number	HP X-CV	X-Mean
ALL	3709	1.45	405
FCblue@2.0	2000	0.97	572
FCred	813	0.60	267
FCviolet	694	1.45	85



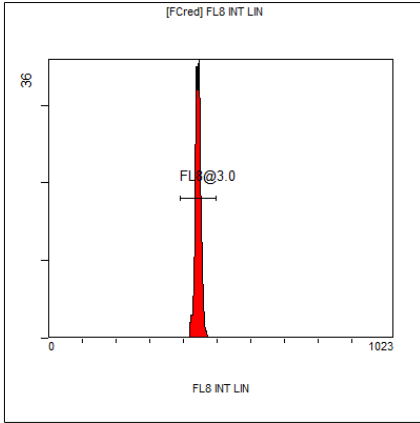
[FCred] FL6 INT LIN

Region	Number	HP X-CV	X-Mean
ALL	813	0.98	460
FL6@3.0	810	0.98	462



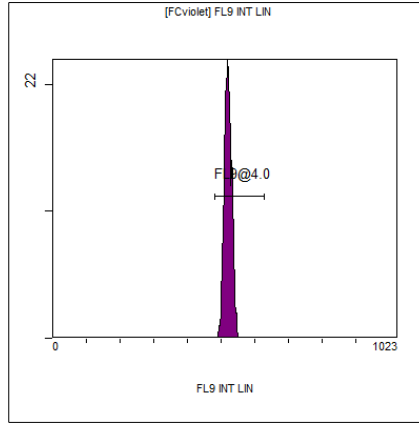
[FCred] FL7 INT LIN

Region	Number	HP X-CV	X-Mean
ALL	813	1.48	464
FL7@3.0	810	1.48	466



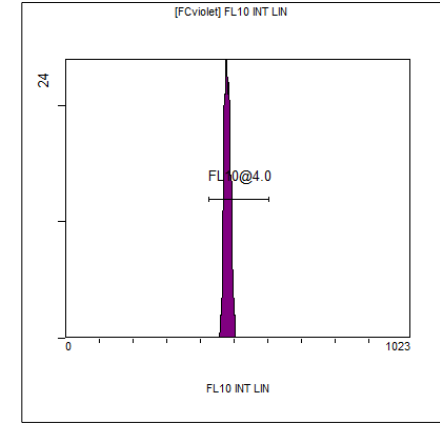
[FCred] FL8 INT LIN

Region	Number	HP X-CV	X-Mean
ALL	813	1.32	442
FL8@3.0	809	1.32	443



[FCviolet] FL9 INT LIN

Region	Number	HP X-CV	X-Mean
ALL	694	1.49	514
FL9@4.0	682	1.49	520



[FCviolet] FL10 INT LIN

Region	Number	HP X-CV	X-Mean
ALL	694	0.44	479
FL10@4.0	689	0.44	481