

Institution: IRB

Run Date: 02-May-11, 08:53:35

Protocol :Alignment Blue Red Violet_ALIGN.pro

Sample ID: FlowCheck

Listmode Replay: New Protocol

User ID: duperray

Analysis Date: 02-May-2011, 08:55:18

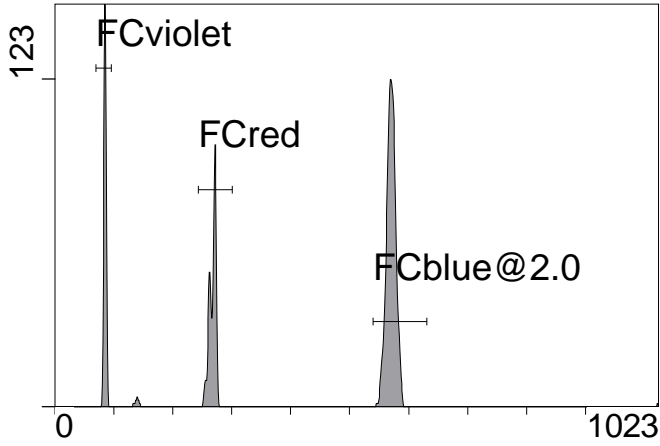
Acquisition Time/Events: 7.3s / 3760 (PROTOCOL)

Settings File: Alignment Blue Red Violet_ALIGN.pro, 29-Nov-2010, 10:40:25

Listmode File: FlowCheck 2011-05-02 001.LMD

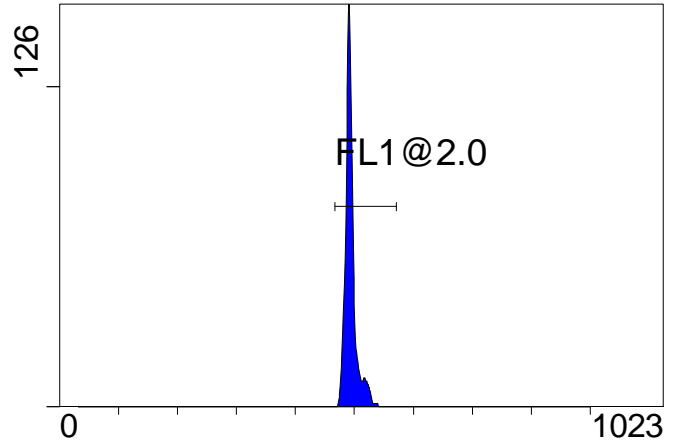
Instrument SN: AN11038 Software Version: Gallios 1.1

[Ungated] FS INT LIN



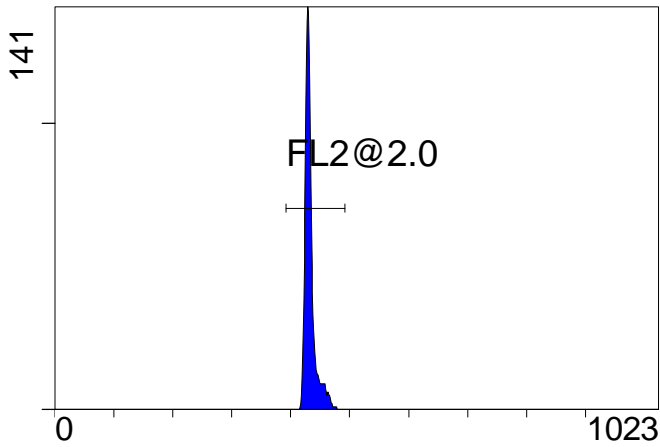
FS INT LIN

(2000) [FCblue@2.0] FL1 INT LIN



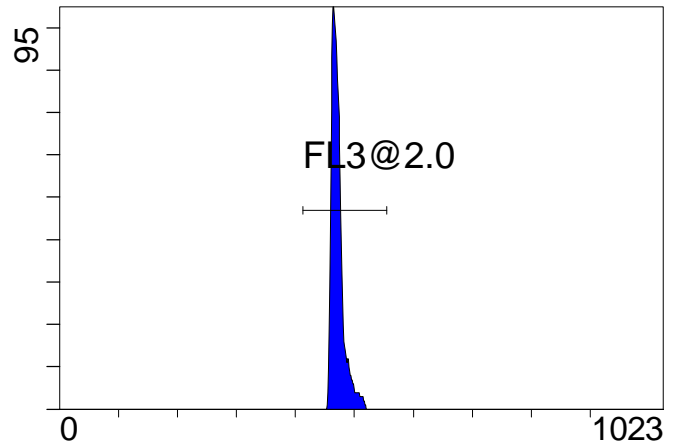
FL1 INT LIN

[FCblue@2.0] FL2 INT LIN



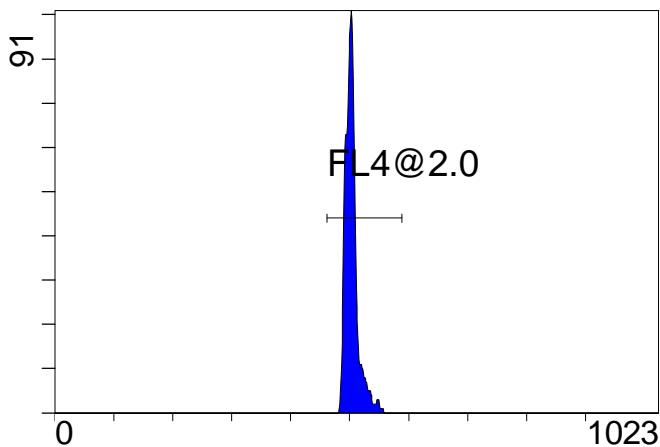
FL2 INT LIN

[FCblue@2.0] FL3 INT LIN



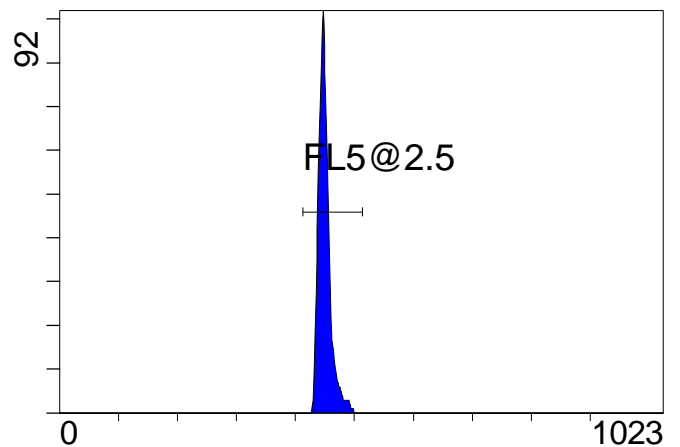
FL3 INT LIN

[FCblue@2.0] FL4 INT LIN



FL4 INT LIN

[FCblue@2.0] FL5 INT LIN



FL5 INT LIN

Institution: IRB

Protocol :Alignment Blue Red Violet_ALIGN.pro

Listmode Replay: New Protocol

Analysis Date: 02-May-2011, 08:55:18

Settings File: Alignment Blue Red Violet_ALIGN.pro, 29-Nov-2010, 10:40:25

Listmode File: FlowCheck 2011-05-02 001.LMD

Run Date: 02-May-11, 08:53:35

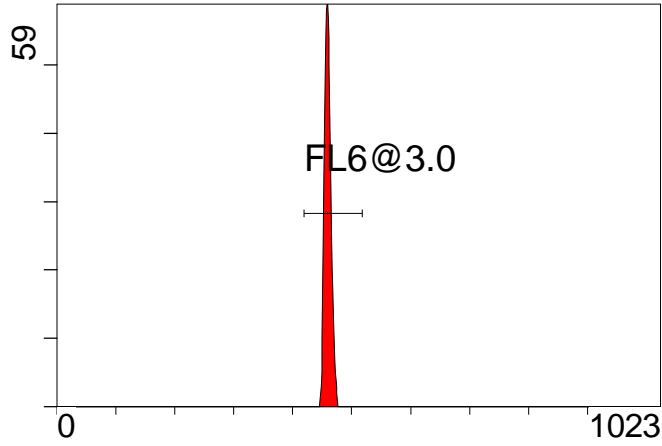
Sample ID: FlowCheck

User ID: duperray

Acquisition Time/Events: 7.3s / 3760 (PROTOCOL)

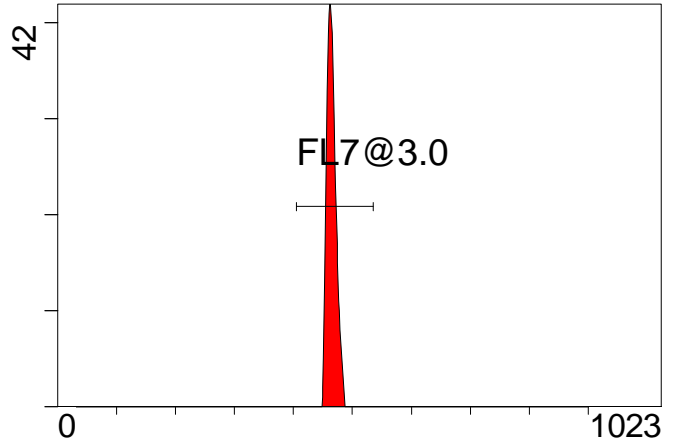
Instrument SN: AN11038 Software Version: Gallios 1.1

[FCred] FL6 INT LIN



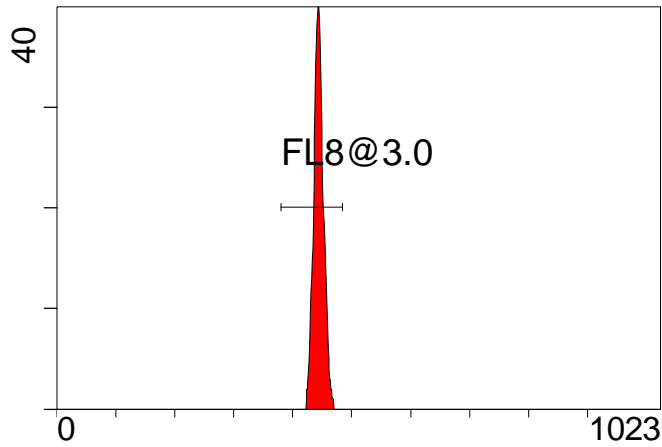
FL6 INT LIN

[FCred] FL7 INT LIN



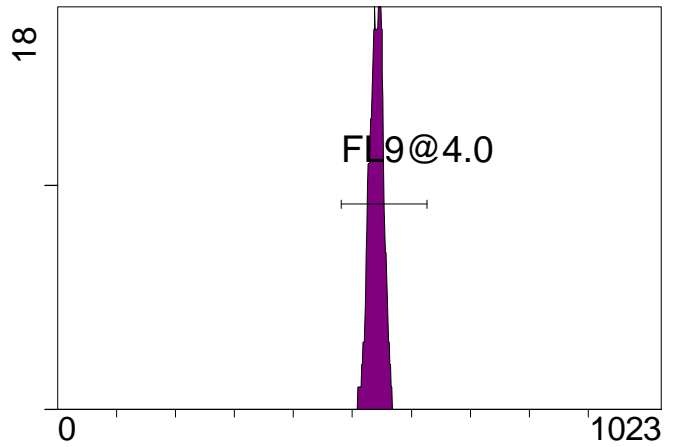
FL7 INT LIN

[FCred] FL8 INT LIN



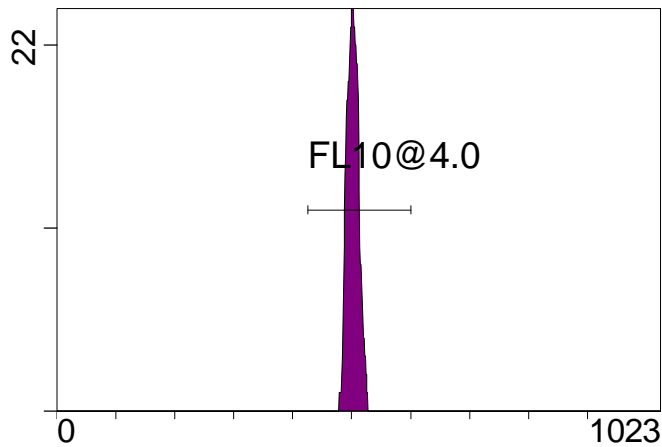
FL8 INT LIN

[FCviolet] FL9 INT LIN



FL9 INT LIN

[FCviolet] FL10 INT LIN



FL10 INT LIN

Statistical Analysis

PROGRAM INFORMATION

File:- FlowCheck 2011-05-02 001.LMD

Gate:- FCblue@2.0 [FCblue@2.0]

Compensation:-

Region	Number	X-Mean	X-HPCV
ALL	2000	472	1.53
ALL	2000	433	0.85
ALL	2000	504	1.55
ALL	2000	450	1.49
ALL	2000	494	0.90
FL1@2.0	1995	495	0.90
FL2@2.0	1995	434	0.85
FL3@2.0	1996	473	1.53
FL4@2.0	1994	504	1.55
FL5@2.5	1993	450	1.49

File:- FlowCheck 2011-05-02 001.LMD

Gate:- FCred [FCred]

Compensation:-

Region	Number	X-Mean	X-HPCV
ALL	885	443	1.03
ALL	885	464	1.42
ALL	885	459	1.15
FL6@3.0	882	460	1.15
FL7@3.0	882	465	1.42
FL8@3.0	879	444	1.03

File:- FlowCheck 2011-05-02 001.LMD

Gate:- FCviolet [FCviolet]

Compensation:-

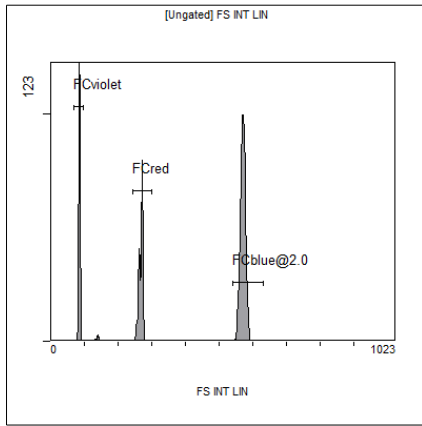
Region	Number	X-Mean	X-HPCV
ALL	675	534	0.46
ALL	675	499	1.31
FL10@4.0	667	502	1.31
FL9@4.0	667	540	0.46

File:- FlowCheck 2011-05-02 001.LMD

Gate:- Ungated

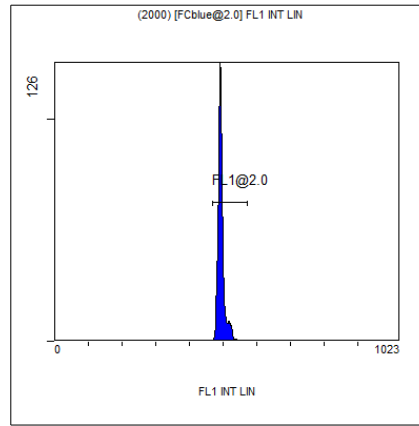
Compensation:-

Region	Number	X-Mean	X-HPCV
ALL	3760	397	1.78
FCblue@2.0	2000	570	1.21
FCred	885	267	0.75
FCviolet	675	84.9	1.78



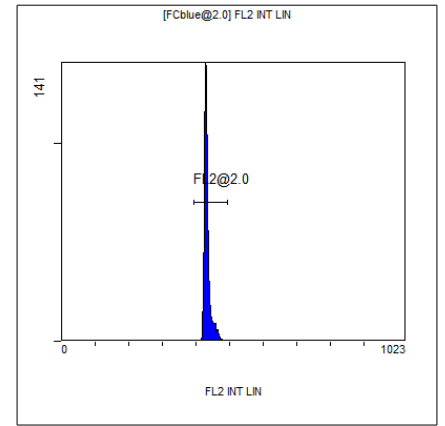
[Ungated] FS INT LIN

Region	Number	HP X-CV	X-Mean
ALL	3760	1.78	397
FCblue@2.0	2000	1.21	570
FCred	885	0.75	267
FCviolet	675	1.78	84.9



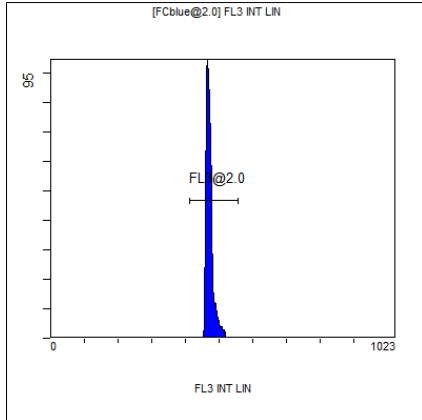
(2000) [FCblue@2.0] FL1 INT LIN

Region	Number	HP X-CV	X-Mean
ALL	2000	0.90	494
FL1@2.0	1995	0.90	495



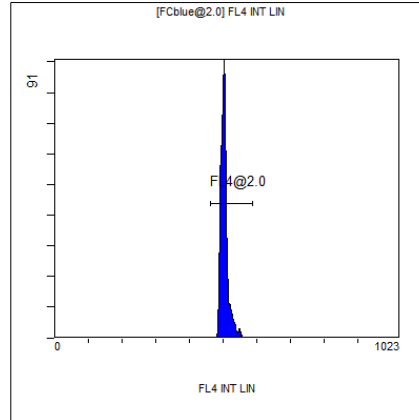
[FCblue@2.0] FL2 INT LIN

Region	Number	HP X-CV	X-Mean
ALL	2000	0.85	433
FL2@2.0	1995	0.85	434



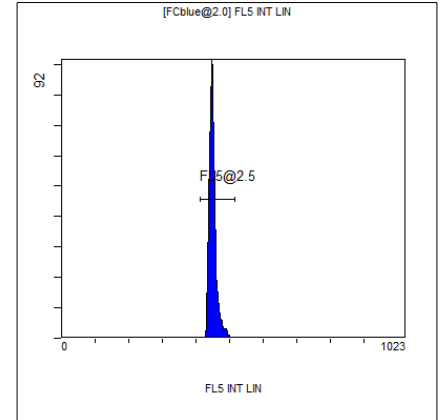
[FCblue@2.0] FL3 INT LIN

Region	Number	HP X-CV	X-Mean
ALL	2000	1.53	472
FL3@2.0	1996	1.53	473



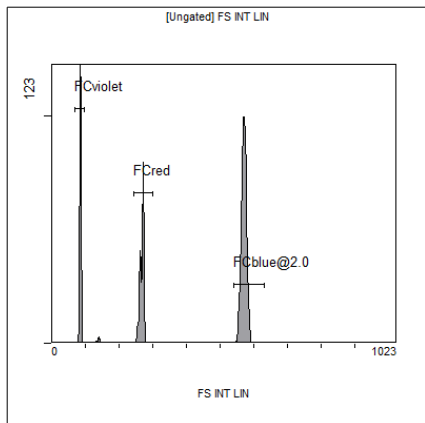
[FCblue@2.0] FL4 INT LIN

Region	Number	HP X-CV	X-Mean
ALL	2000	1.55	504
FL4@2.0	1994	1.55	504



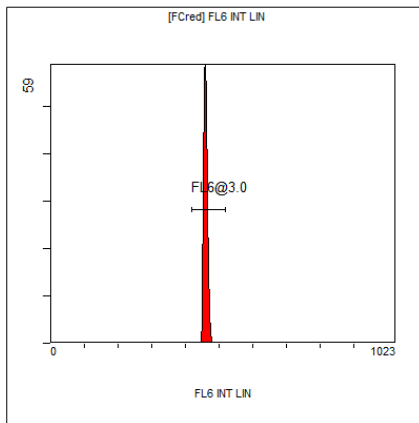
[FCblue@2.0] FL5 INT LIN

Region	Number	HP X-CV	X-Mean
ALL	2000	1.49	450
FL5@2.5	1993	1.49	450



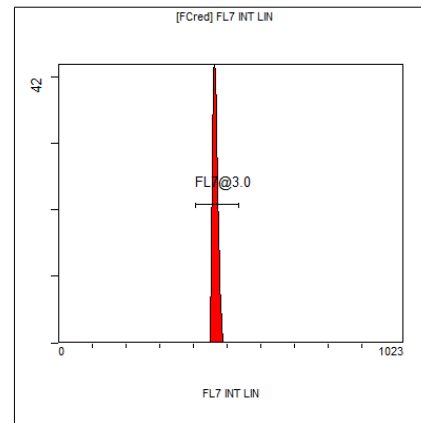
[Ungated] FS INT LIN

Region	Number	HP X-CV	X-Mean
ALL	3760	1.78	397
FCblue@2.0	2000	1.21	570
FCred	885	0.75	267
FCviolet	675	1.78	84.9



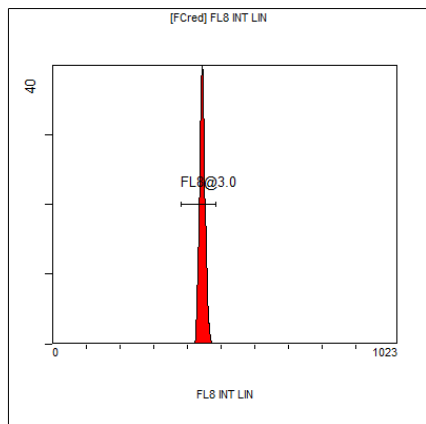
[FCred] FL6 INT LIN

Region	Number	HP X-CV	X-Mean
ALL	885	1.15	459
FL6@3.0	882	1.15	460



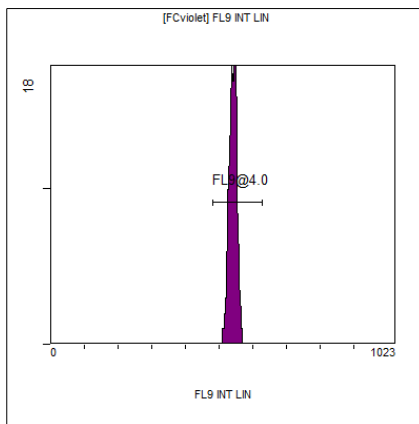
[FCred] FL7 INT LIN

Region	Number	HP X-CV	X-Mean
ALL	885	1.42	464
FL7@3.0	882	1.42	465



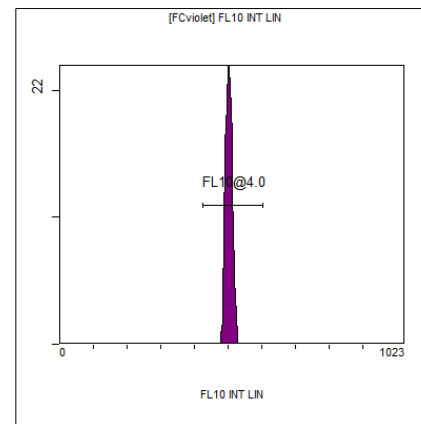
[FCred] FL8 INT LIN

Region	Number	HP X-CV	X-Mean
ALL	885	1.03	443
FL8@3.0	879	1.03	444



[FCviolet] FL9 INT LIN

Region	Number	HP X-CV	X-Mean
ALL	675	0.46	534
FL9@4.0	667	0.46	540



[FCviolet] FL10 INT LIN

Region	Number	HP X-CV	X-Mean
ALL	675	1.31	499
FL10@4.0	667	1.31	502