

Institution: IRB

Protocol :Alignment Blue Red Violet\_ALIGN.pro

Listmode Replay: New Protocol

Analysis Date: 28-Jun-2011, 09:16:43

Settings File: Alignment Blue Red Violet\_ALIGN.pro, 16-May-2011, 09:32:42

Listmode File: FlowCheck 2011-06-28 001.LMD

Run Date: 28-Jun-11, 09:14:59

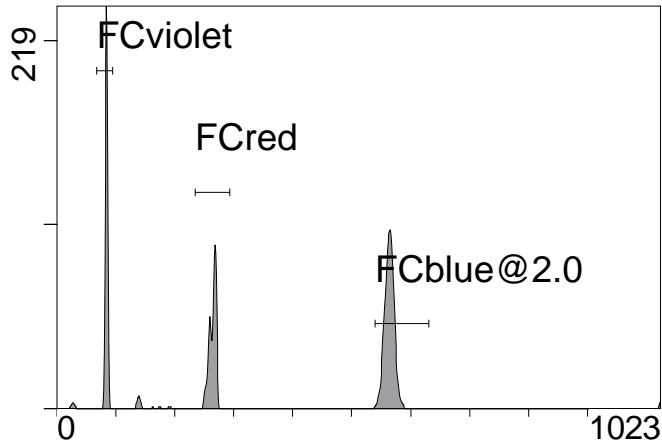
Sample ID: FlowCheck

User ID: duperray

Acquisition Time/Events: 12.7s / 4631 (PROTOCOL)

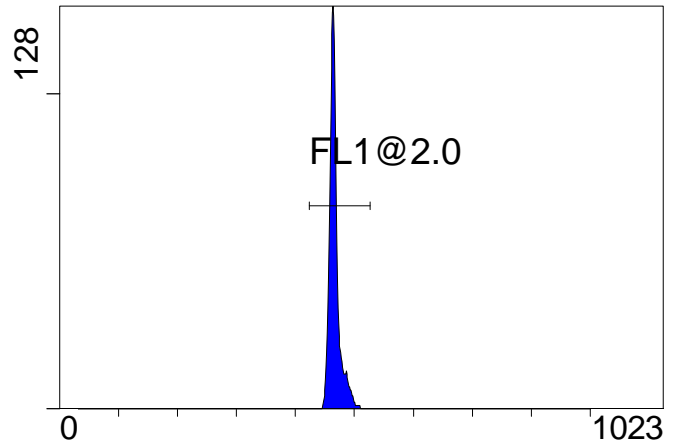
Instrument SN: AN11038 Software Version: Gallios 1.1

[Ungated] FS INT LIN



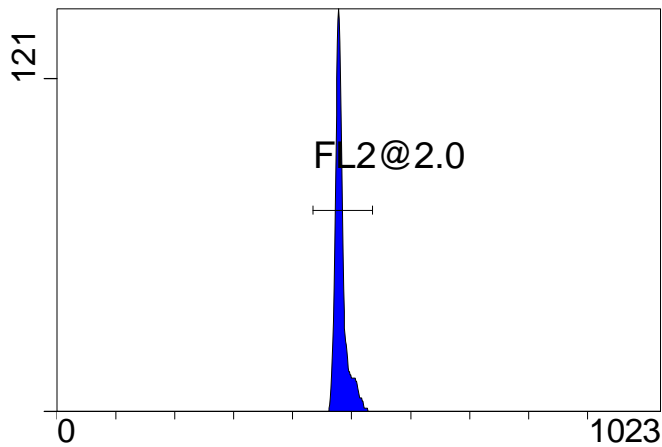
FS INT LIN

(2000) [FCblue@2.0] FL1 INT LIN



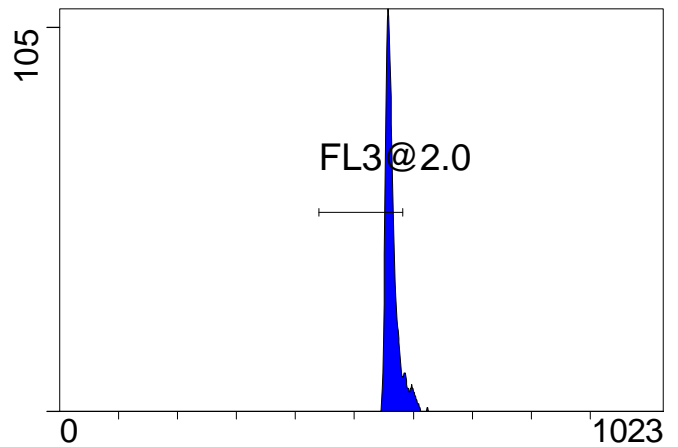
FL1 INT LIN

[FCblue@2.0] FL2 INT LIN



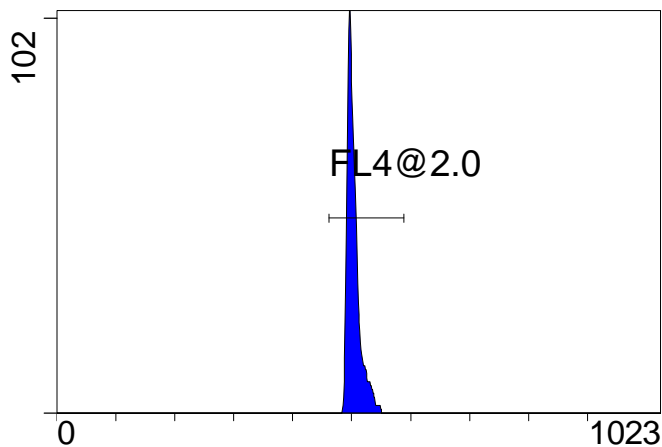
FL2 INT LIN

[FCblue@2.0] FL3 INT LIN



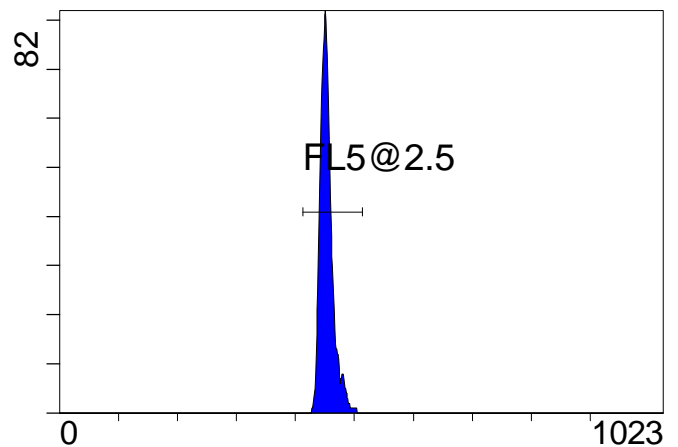
FL3 INT LIN

[FCblue@2.0] FL4 INT LIN



FL4 INT LIN

[FCblue@2.0] FL5 INT LIN



FL5 INT LIN

Institution: IRB

Protocol :Alignment Blue Red Violet\_ALIGN.pro

Listmode Replay: New Protocol

Analysis Date: 28-Jun-2011, 09:16:43

Settings File: Alignment Blue Red Violet\_ALIGN.pro, 16-May-2011, 09:32:42

Listmode File: FlowCheck 2011-06-28 001.LMD

Run Date: 28-Jun-11, 09:14:59

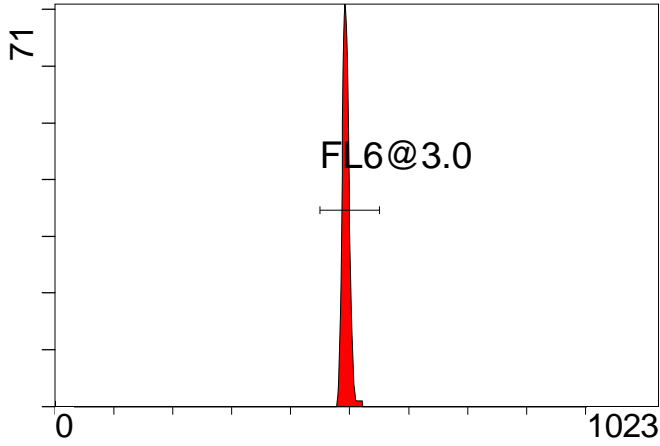
Sample ID: FlowCheck

User ID: duperray

Acquisition Time/Events: 12.7s / 4631 (PROTOCOL)

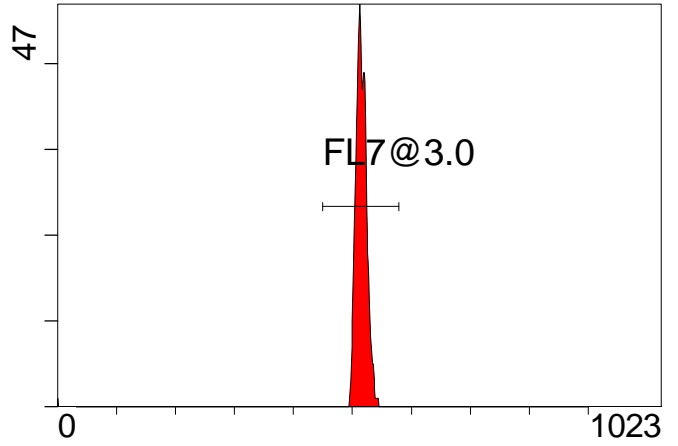
Instrument SN: AN11038 Software Version: Gallios 1.1

[FCred] FL6 INT LIN



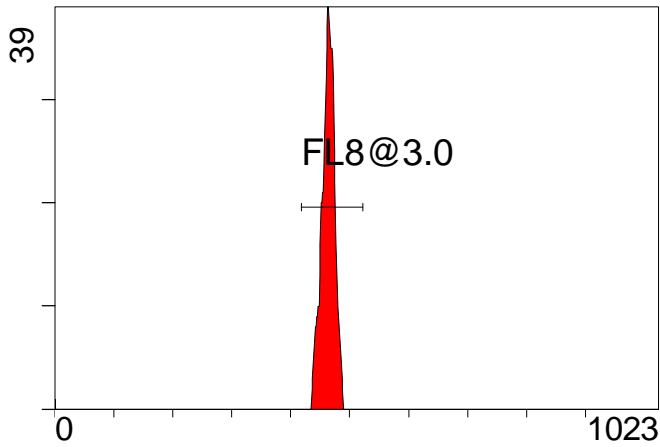
FL6 INT LIN

[FCred] FL7 INT LIN



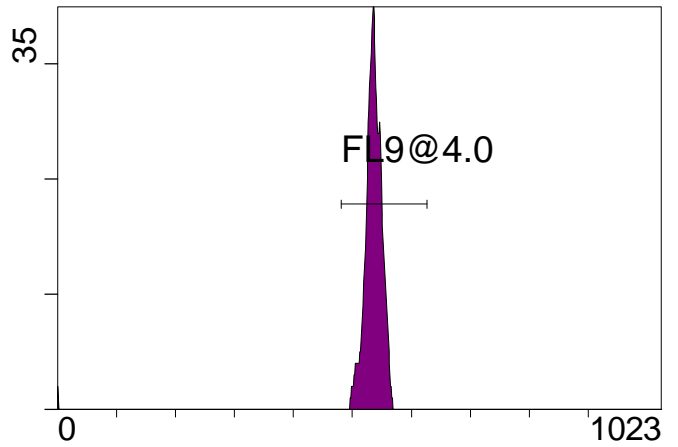
FL7 INT LIN

[FCred] FL8 INT LIN



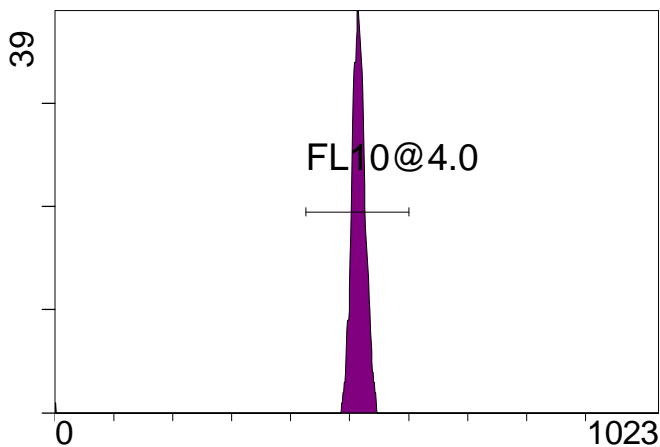
FL8 INT LIN

[FCviolet] FL9 INT LIN



FL9 INT LIN

[FCviolet] FL10 INT LIN



FL10 INT LIN

**Statistical Analysis**

**PROGRAM INFORMATION**

File:- FlowCheck 2011-06-28 001.LMD

Gate:- FCblue@2.0 [FCblue@2.0]

Compensation:-

Region	Number	X-Mean	X-HPCV
ALL	2000	453	1.53
ALL	2000	503	1.14
ALL	2000	564	0.97
ALL	2000	481	1.05
ALL	2000	466	1.00
FL1@2.0	1991	467	1.00
FL2@2.0	1983	482	1.05
FL3@2.0	1749	561	0.97
FL4@2.0	1991	505	1.14
FL5@2.5	1989	454	1.53

File:- FlowCheck 2011-06-28 001.LMD

Gate:- FCred [FCred]

Compensation:-

Region	Number	X-Mean	X-HPCV
ALL	1105	460	1.67
ALL	1105	512	1.39
ALL	1105	491	0.96
FL6@3.0	1095	494	0.96
FL7@3.0	1095	516	1.39
FL8@3.0	1094	463	1.67

File:- FlowCheck 2011-06-28 001.LMD

Gate:- FCviolet [FCviolet]

Compensation:-

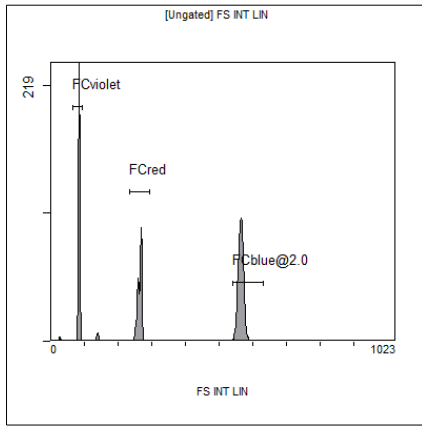
Region	Number	X-Mean	X-HPCV
ALL	1176	509	1.61
ALL	1176	527	1.26
FL10@4.0	1155	515	1.61
FL9@4.0	1155	536	1.26

File:- FlowCheck 2011-06-28 001.LMD

Gate:- Ungated

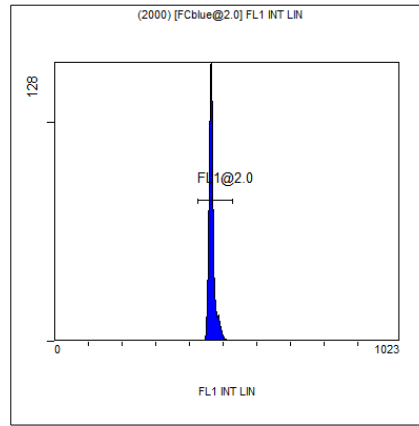
Compensation:-

Region	Number	X-Mean	X-HPCV
ALL	4631	349	1.77
FCblue@2.0	2000	564	1.02
FCred	1105	264	0.97
FCviolet	1176	84	1.77



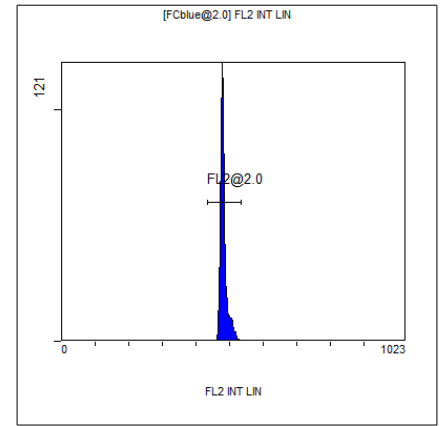
[Ungated] FS INT LIN

Region	Number	HP X-CV	X-Mean
ALL	4631	1.77	349
FCblue@2.0	2000	1.02	564
FCred	1105	0.97	264
FCviolet	1176	1.77	84



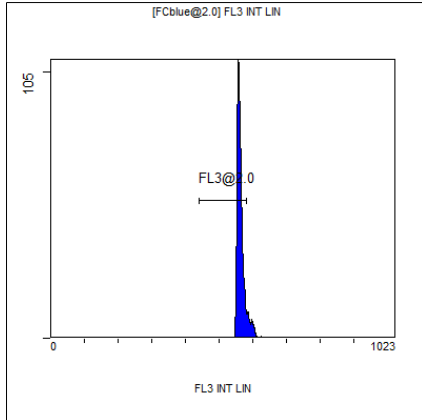
(2000) [FCblue@2.0] FL1 INT LIN

Region	Number	HP X-CV	X-Mean
ALL	2000	1.00	466
FL1@2.0	1991	1.00	467



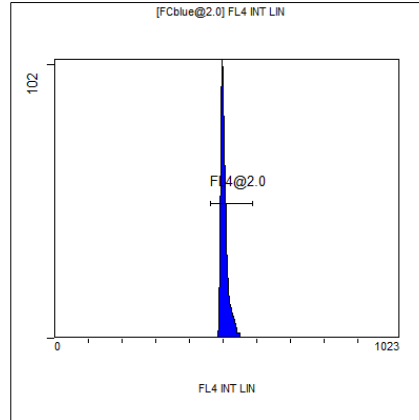
[FCblue@2.0] FL2 INT LIN

Region	Number	HP X-CV	X-Mean
ALL	2000	1.05	481
FL2@2.0	1983	1.05	482



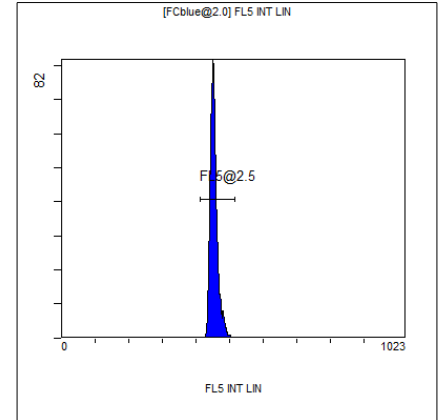
[FCblue@2.0] FL3 INT LIN

Region	Number	HP X-CV	X-Mean
ALL	2000	0.97	564
FL3@2.0	1749	0.97	561



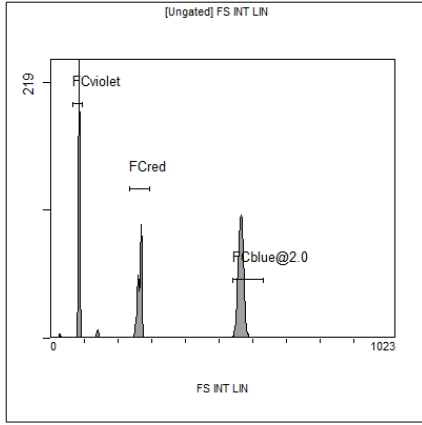
[FCblue@2.0] FL4 INT LIN

Region	Number	HP X-CV	X-Mean
ALL	2000	1.14	503
FL4@2.0	1991	1.14	505



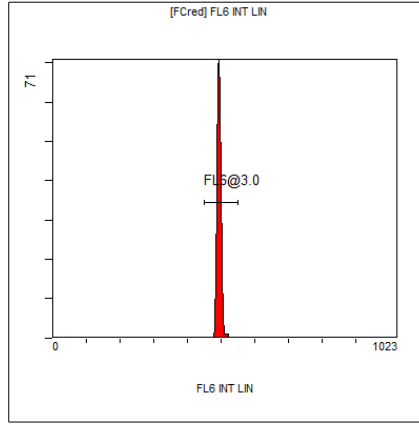
[FCblue@2.0] FL5 INT LIN

Region	Number	HP X-CV	X-Mean
ALL	2000	1.53	453
FL5@2.5	1989	1.53	454



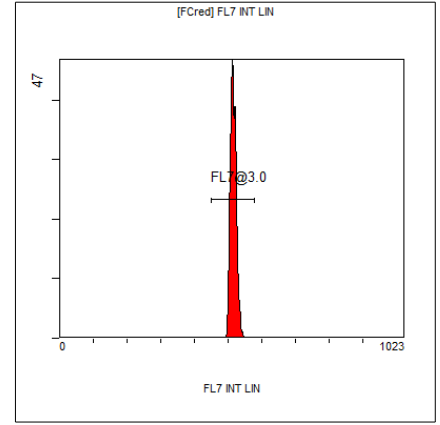
[Ungated] FS INT LIN

Region	Number	HP X-CV	X-Mean
ALL	4631	1.77	349
FCblue@2.0	2000	1.02	564
FCred	1105	0.97	264
FCviolet	1176	1.77	84



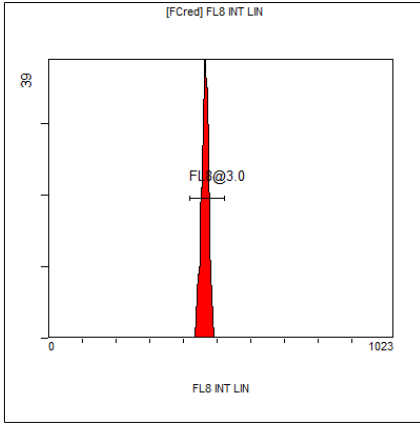
[FCred] FL6 INT LIN

Region	Number	HP X-CV	X-Mean
ALL	1105	0.96	491
FL6@3.0	1095	0.96	494



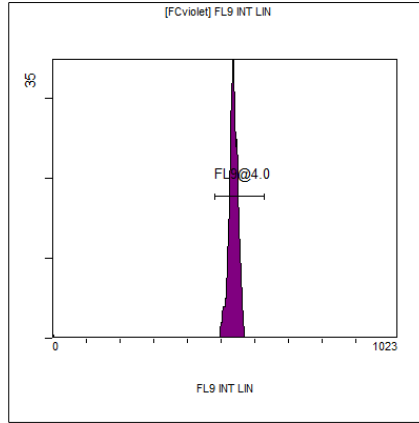
[FCred] FL7 INT LIN

Region	Number	HP X-CV	X-Mean
ALL	1105	1.39	512
FL7@3.0	1095	1.39	516



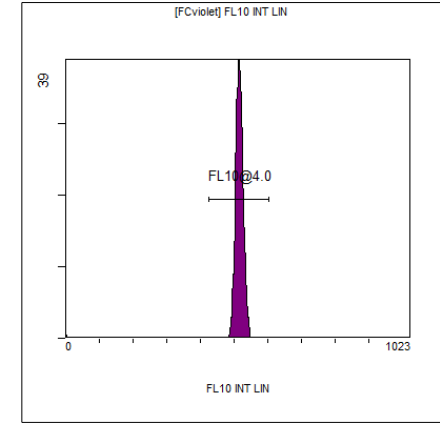
[FCred] FL8 INT LIN

Region	Number	HP X-CV	X-Mean
ALL	1105	1.67	460
FL8@3.0	1094	1.67	463



[FCviolet] FL9 INT LIN

Region	Number	HP X-CV	X-Mean
ALL	1176	1.26	527
FL9@4.0	1155	1.26	536



[FCviolet] FL10 INT LIN

Region	Number	HP X-CV	X-Mean
ALL	1176	1.61	509
FL10@4.0	1155	1.61	515