

Institution: IRB

Protocol :Alignment Blue Red Violet_ALIGN.pro

Listmode Replay: Runtime Protocol

Analysis Date: 11-Jul-2011, 09:04:47

Settings File: Alignment Blue Red Violet_ALIGN.pro, 08-Jul-2011, 14:51:03

Listmode File: FlowCheck 2011-07-11 001.LMD

Run Date: 11-Jul-11, 09:02:36

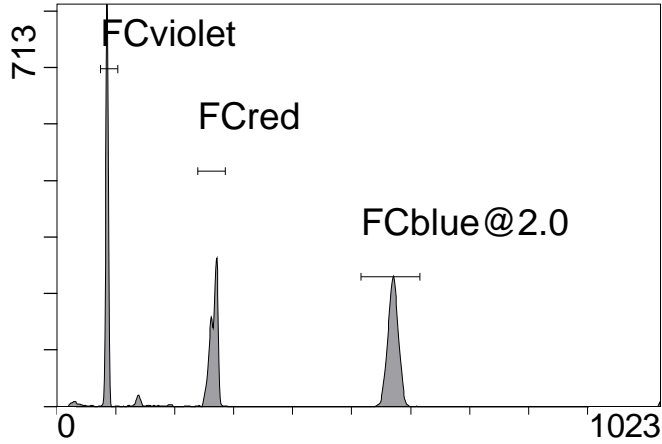
Sample ID: FlowCheck

User ID: duperray

Acquisition Time/Events: 40.6s / 13419 (PROTOCOL)

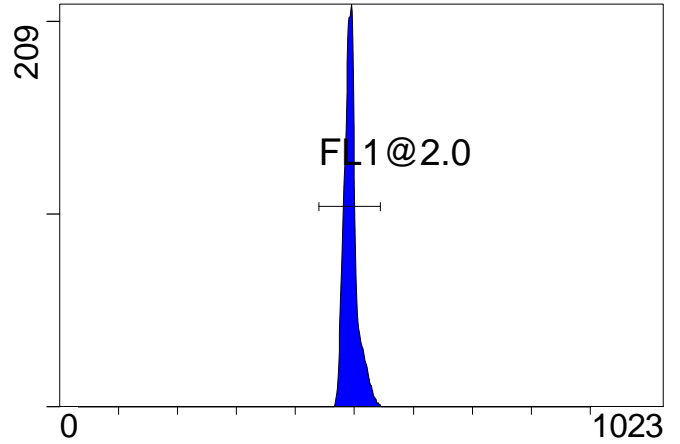
Instrument SN: AN11038 Software Version: Gallios 1.2

[Ungated] FS INT LIN



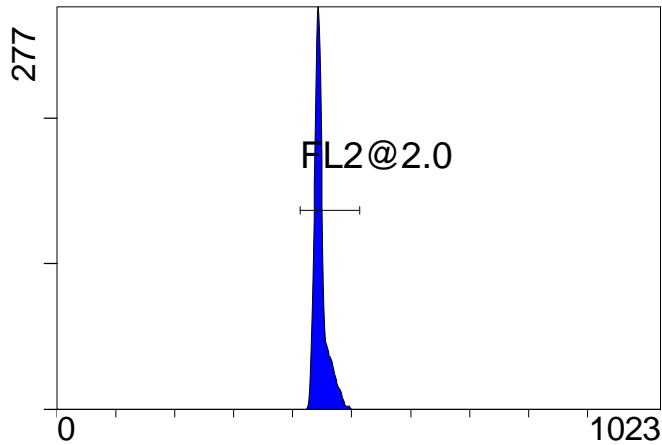
FS INT LIN

(5000) [FCblue@2.0] FL1 INT LIN



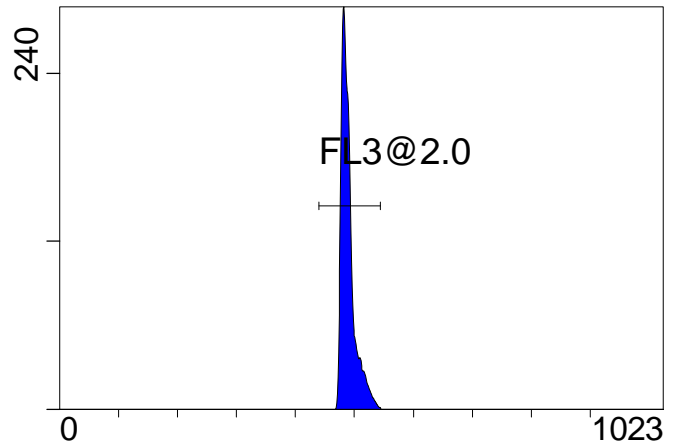
FL1 INT LIN

[FCblue@2.0] FL2 INT LIN



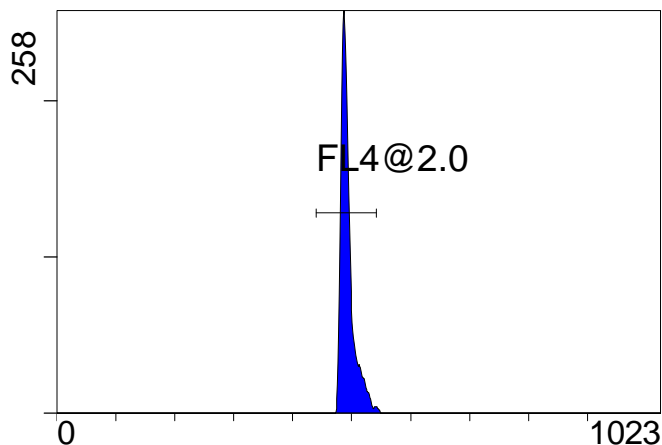
FL2 INT LIN

[FCblue@2.0] FL3 INT LIN



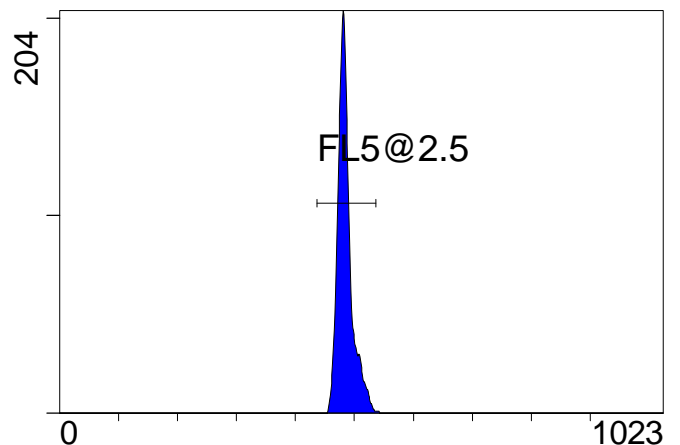
FL3 INT LIN

[FCblue@2.0] FL4 INT LIN



FL4 INT LIN

[FCblue@2.0] FL5 INT LIN



FL5 INT LIN

Institution: IRB

Protocol :Alignment Blue Red Violet_ALIGN.pro

Listmode Replay: Runtime Protocol

Analysis Date: 11-Jul-2011, 09:04:47

Settings File: Alignment Blue Red Violet_ALIGN.pro, 08-Jul-2011, 14:51:03

Listmode File: FlowCheck 2011-07-11 001.LMD

Run Date: 11-Jul-11, 09:02:36

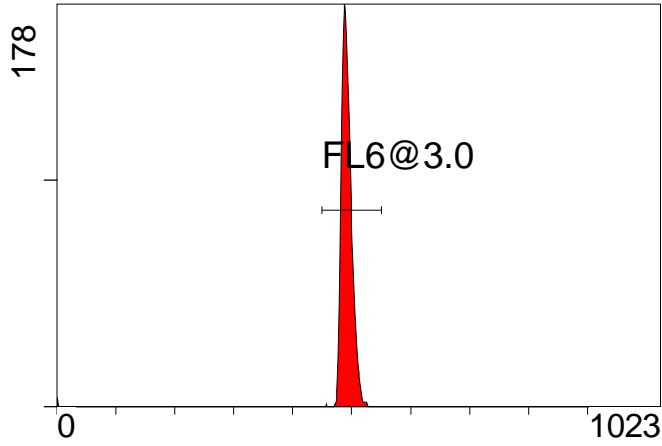
Sample ID: FlowCheck

User ID: duperray

Acquisition Time/Events: 40.6s / 13419 (PROTOCOL)

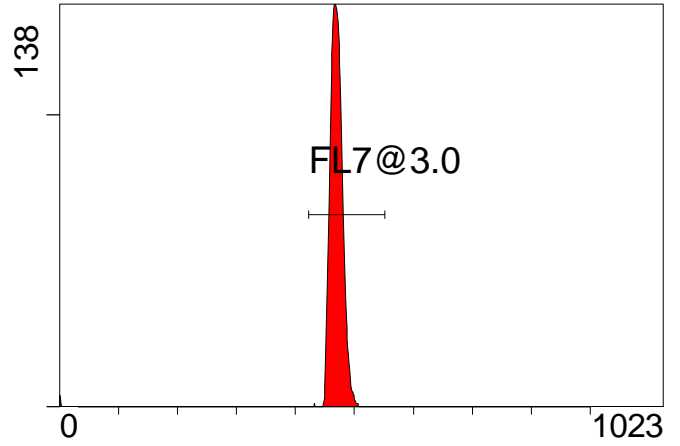
Instrument SN: AN11038 Software Version: Gallios 1.2

[FCred] FL6 INT LIN



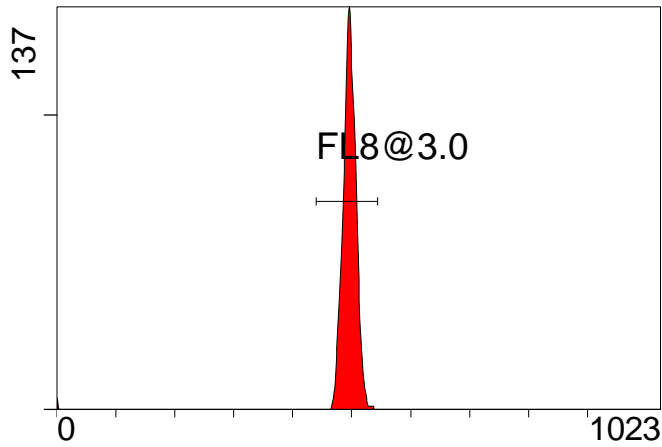
FL6 INT LIN

[FCred] FL7 INT LIN



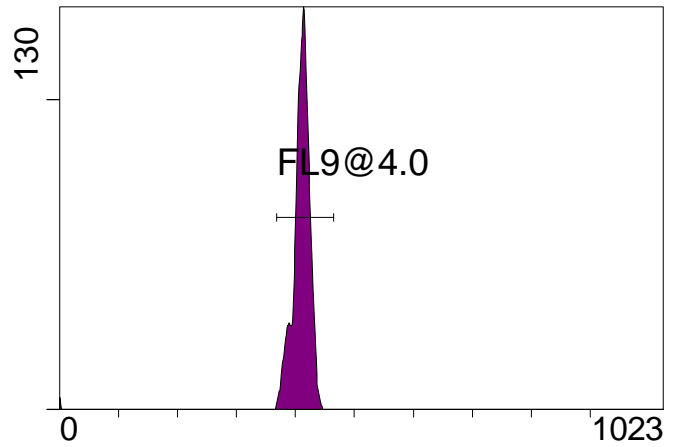
FL7 INT LIN

[FCred] FL8 INT LIN



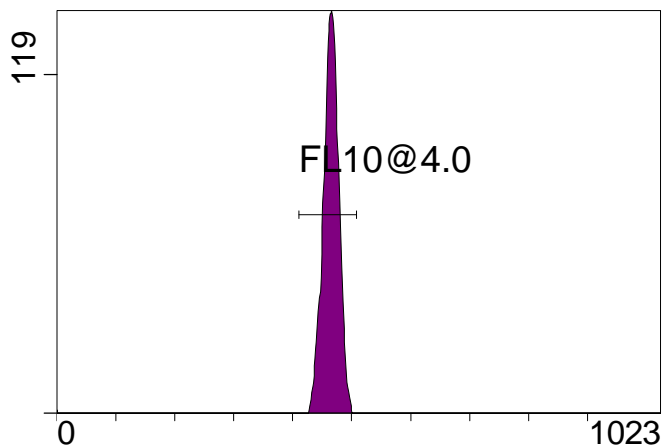
FL8 INT LIN

[FCviolet] FL9 INT LIN



FL9 INT LIN

[FCviolet] FL10 INT LIN



FL10 INT LIN

Statistical Analysis

PROGRAM INFORMATION

File:- FlowCheck 2011-07-11 001.LMD

Gate:- FCblue@2.0 [FCblue@2.0]

Compensation:-

Region	Number	X-Mean	X-HPCV
ALL	5000	485	1.64
ALL	5000	493	1.20
ALL	5000	489	1.47
ALL	5000	447	1.26
ALL	5000	494	1.57
FL1@2.0	4972	494	1.57
FL2@2.0	4977	447	1.26
FL3@2.0	4970	490	1.47
FL4@2.0	4948	493	1.20
FL5@2.5	4960	485	1.64

File:- FlowCheck 2011-07-11 001.LMD

Gate:- FCred [FCred]

Compensation:-

Region	Number	X-Mean	X-HPCV
ALL	3640	494	1.89
ALL	3640	467	1.97
ALL	3640	489	1.46
FL6@3.0	3614	492	1.46
FL7@3.0	3617	470	1.97
FL8@3.0	3608	497	1.89

File:- FlowCheck 2011-07-11 001.LMD

Gate:- FCviolet [FCviolet]

Compensation:-

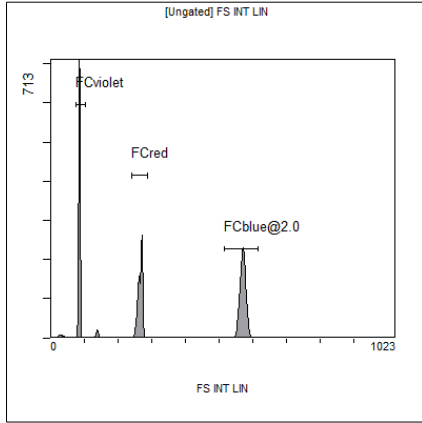
Region	Number	X-Mean	X-HPCV
ALL	3870	464	2.38
ALL	3870	409	2.17
FL10@4.0	3837	465	2.38
FL9@4.0	3835	410	2.17

File:- FlowCheck 2011-07-11 001.LMD

Gate:- Ungated

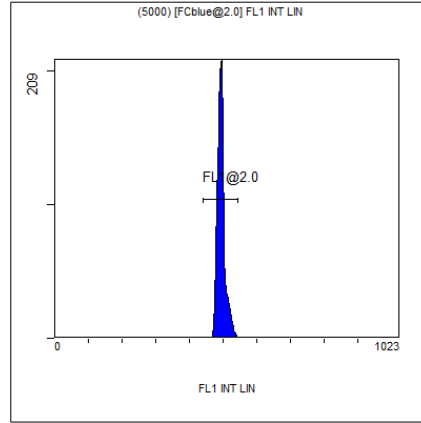
Compensation:-

Region	Number	X-Mean	X-HPCV
ALL	13419	325	1.70
FCblue@2.0	5000	570	1.34
FCred	3640	266	1.16
FCviolet	3870	85	1.70



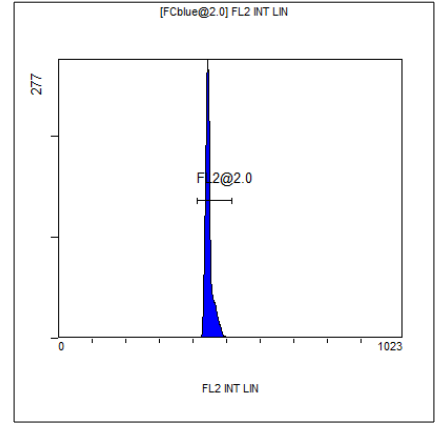
[Ungated] FS INT LIN

Region	Number	HP X-CV	X-Mean
ALL	13419	1.70	325
FCblue@2.0	5000	1.34	570
FCred	3640	1.16	266
FCviolet	3870	1.70	85



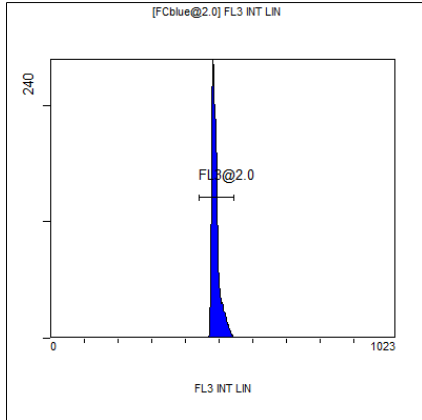
(5000) [FCblue@2.0] FL1 INT LIN

Region	Number	HP X-CV	X-Mean
ALL	5000	1.57	494
FL1@2.0	4972	1.57	494



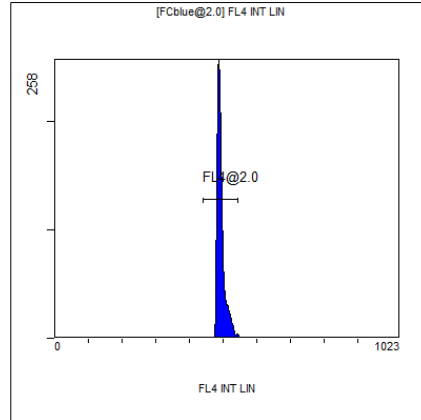
[FCblue@2.0] FL2 INT LIN

Region	Number	HP X-CV	X-Mean
ALL	5000	1.26	447
FL2@2.0	4977	1.26	447



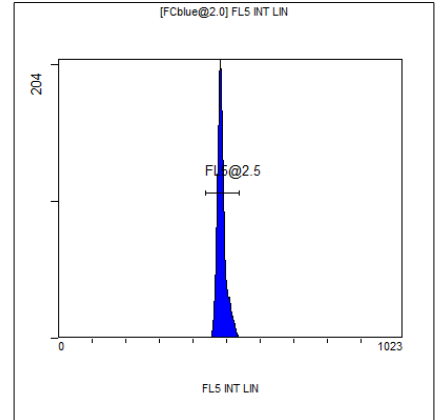
[FCblue@2.0] FL3 INT LIN

Region	Number	HP X-CV	X-Mean
ALL	5000	1.47	489
FL3@2.0	4970	1.47	490



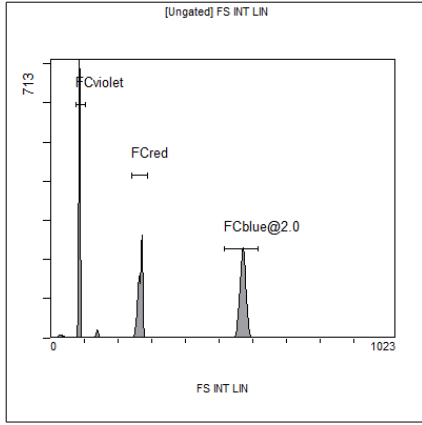
[FCblue@2.0] FL4 INT LIN

Region	Number	HP X-CV	X-Mean
ALL	5000	1.20	493
FL4@2.0	4948	1.20	493



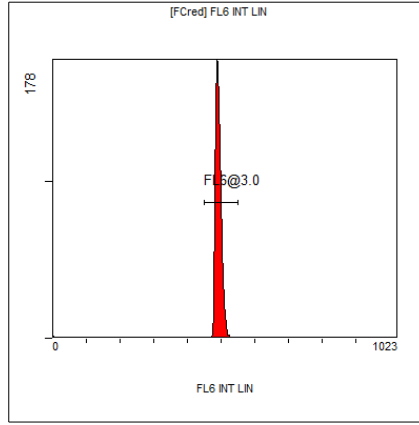
[FCblue@2.0] FL5 INT LIN

Region	Number	HP X-CV	X-Mean
ALL	5000	1.64	485
FL5@2.5	4960	1.64	485



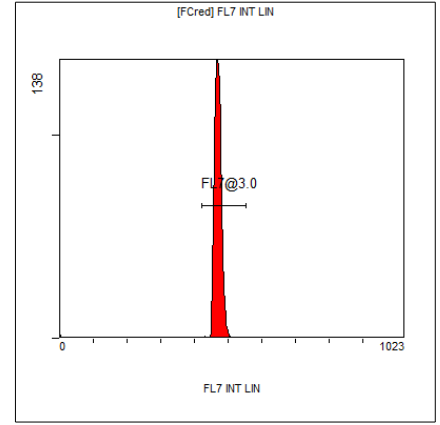
[Ungated] FS INT LIN

Region	Number	HP X-CV	X-Mean
ALL	13419	1.70	325
FCblue@2.0	5000	1.34	570
FCred	3640	1.16	266
FCviolet	3870	1.70	85



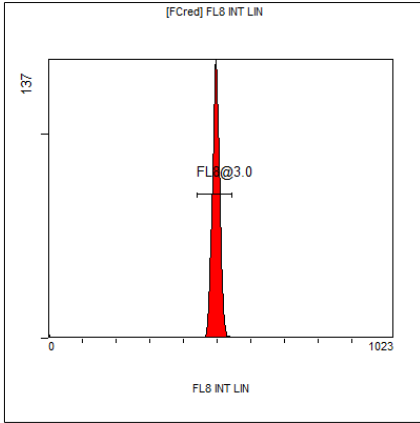
[FCred] FL6 INT LIN

Region	Number	HP X-CV	X-Mean
ALL	3640	1.46	489
FL6@3.0	3614	1.46	492



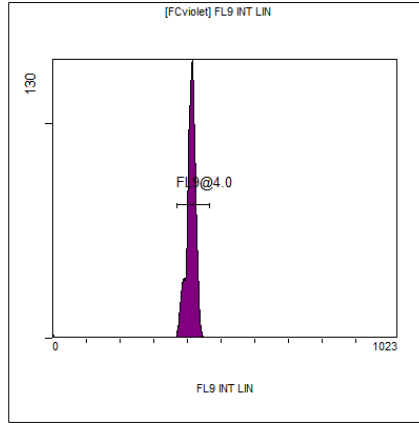
[FCred] FL7 INT LIN

Region	Number	HP X-CV	X-Mean
ALL	3640	1.97	467
FL7@3.0	3617	1.97	470



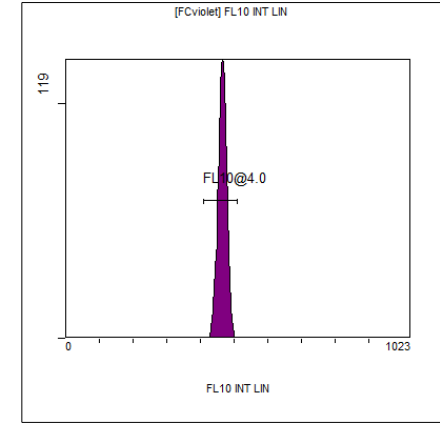
[FCred] FL8 INT LIN

Region	Number	HP X-CV	X-Mean
ALL	3640	1.89	494
FL8@3.0	3608	1.89	497



[FCviolet] FL9 INT LIN

Region	Number	HP X-CV	X-Mean
ALL	3870	2.17	409
FL9@4.0	3835	2.17	410



[FCviolet] FL10 INT LIN

Region	Number	HP X-CV	X-Mean
ALL	3870	2.38	464
FL10@4.0	3837	2.38	465