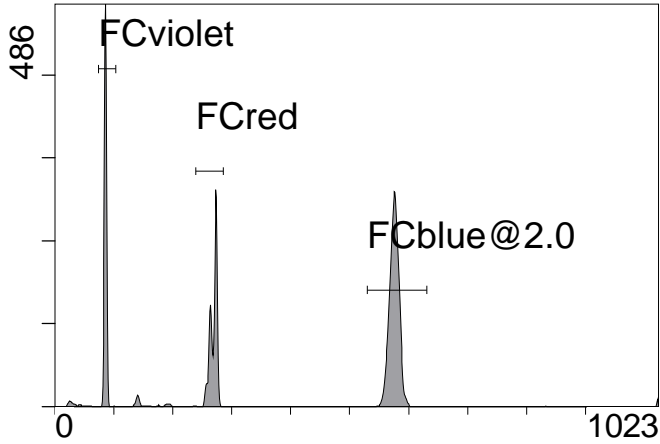


Institution: IRB  
Protocol :Alignment Blue Red Violet\_ALIGN.pro  
Listmode Replay: New Protocol  
Analysis Date: 13-Sep-2011, 09:47:31  
Settings File: Alignment Blue Red Violet\_ALIGN.pro, 08-Jul-2011, 14:51:03  
Listmode File: FlowCheck 2011-09-13 001.LMD

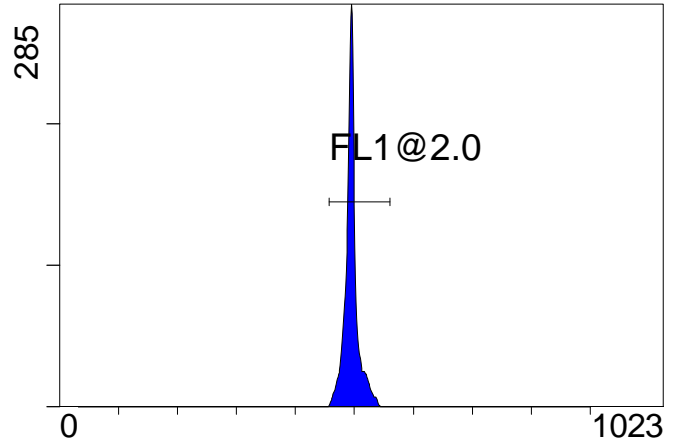
Run Date: 13-Sep-11, 09:45:10  
Sample ID: FlowCheck  
User ID: duperray  
Acquisition Time/Events: 32.6s / 10540 (PROTOCOL)  
Instrument SN: AN11038 Software Version: Gallios 1.2

[Ungated] FS INT LIN



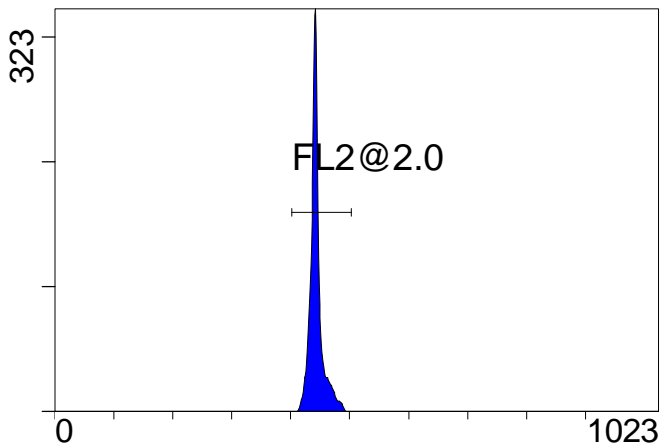
FS INT LIN

(5000) [FCblue@2.0] FL1 INT LIN



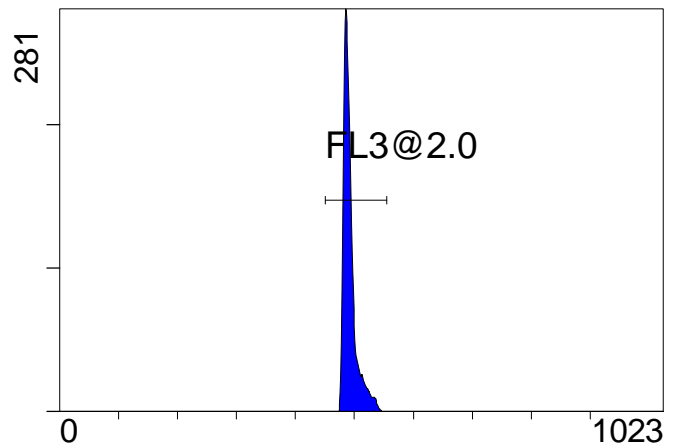
FL1 INT LIN

[FCblue@2.0] FL2 INT LIN



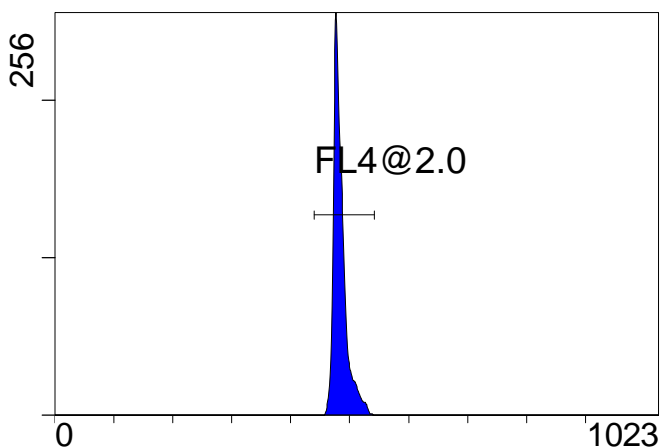
FL2 INT LIN

[FCblue@2.0] FL3 INT LIN



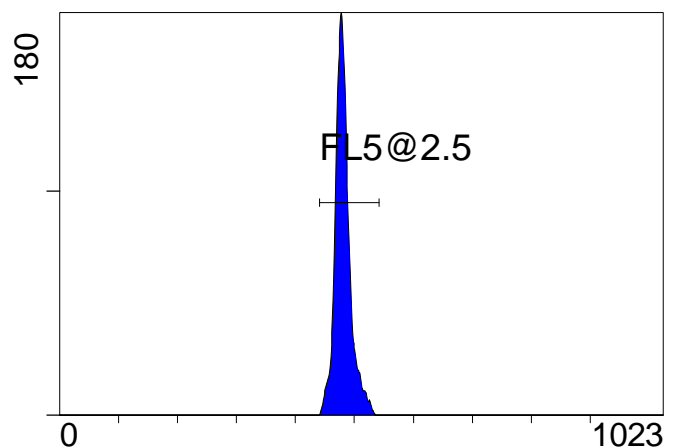
FL3 INT LIN

[FCblue@2.0] FL4 INT LIN



FL4 INT LIN

[FCblue@2.0] FL5 INT LIN



FL5 INT LIN

Institution: IRB

Protocol :Alignment Blue Red Violet\_ALIGN.pro

Listmode Replay: New Protocol

Analysis Date: 13-Sep-2011, 09:47:31

Settings File: Alignment Blue Red Violet\_ALIGN.pro, 08-Jul-2011, 14:51:03

Listmode File: FlowCheck 2011-09-13 001.LMD

Run Date: 13-Sep-11, 09:45:10

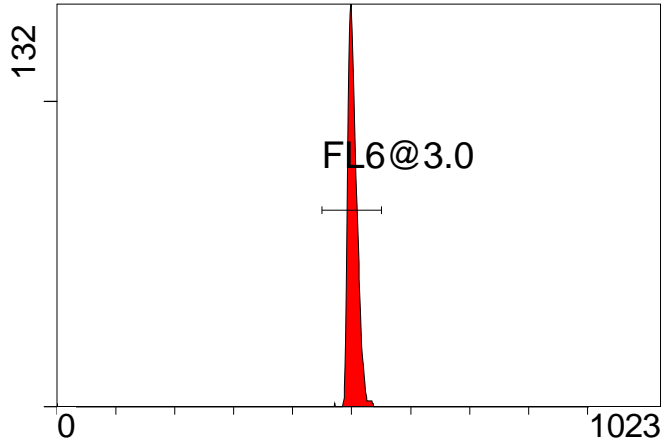
Sample ID: FlowCheck

User ID: duperray

Acquisition Time/Events: 32.6s / 10540 (PROTOCOL)

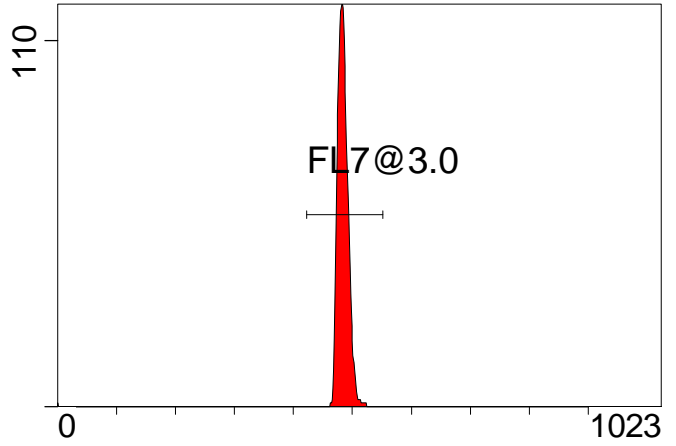
Instrument SN: AN11038 Software Version: Gallios 1.2

[FCred] FL6 INT LIN



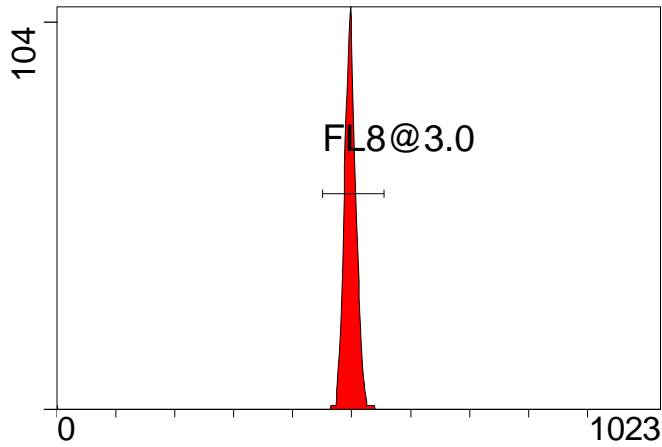
FL6 INT LIN

[FCred] FL7 INT LIN



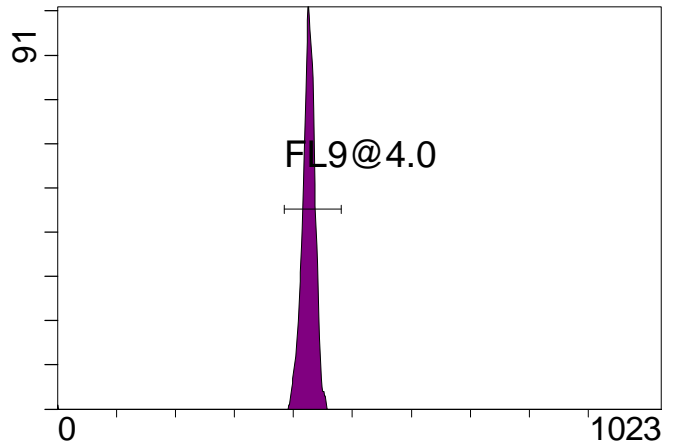
FL7 INT LIN

[FCred] FL8 INT LIN



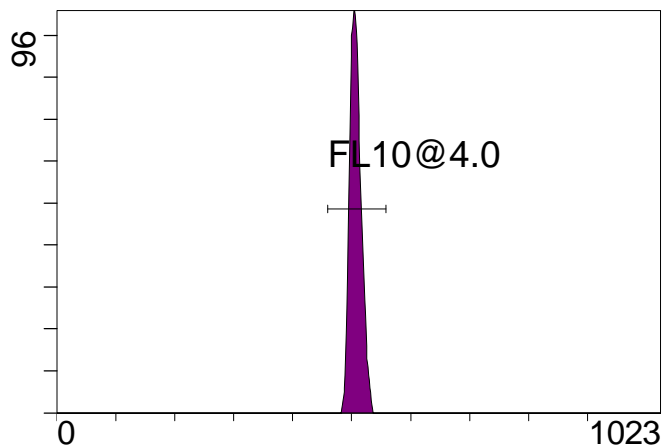
FL8 INT LIN

[FCviolet] FL9 INT LIN



FL9 INT LIN

[FCviolet] FL10 INT LIN



FL10 INT LIN

**Statistical Analysis**

**PROGRAM INFORMATION**

File:- FlowCheck 2011-09-13 001.LMD

Gate:- FCblue@2.0 [FCblue@2.0]

Compensation:-

Region	Number	X-Mean	X-HPCV
ALL	5000	481	1.94
ALL	5000	484	1.31
ALL	5000	492	1.19
ALL	5000	443	0.77
ALL	5000	495	0.86
FL1@2.0	4979	495	0.86
FL2@2.0	4978	444	0.77
FL3@2.0	4978	493	1.19
FL4@2.0	4974	484	1.31
FL5@2.5	4971	481	1.94

File:- FlowCheck 2011-09-13 001.LMD

Gate:- FCred [FCred]

Compensation:-

Region	Number	X-Mean	X-HPCV
ALL	2482	496	1.48
ALL	2482	482	1.79
ALL	2482	501	1.28
FL6@3.0	2470	503	1.28
FL7@3.0	2471	484	1.79
FL8@3.0	2470	498	1.48

File:- FlowCheck 2011-09-13 001.LMD

Gate:- FCviolet [FCviolet]

Compensation:-

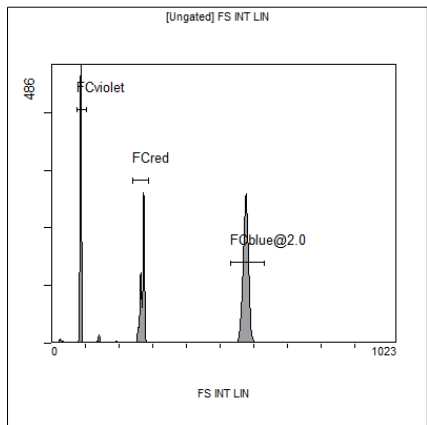
Region	Number	X-Mean	X-HPCV
ALL	2369	508	1.60
ALL	2369	426	1.81
FL10@4.0	2344	507	1.60
FL9@4.0	2344	425	1.81

File:- FlowCheck 2011-09-13 001.LMD

Gate:- Ungated

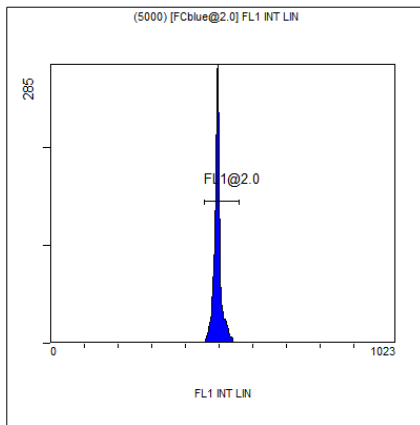
Compensation:-

Region	Number	X-Mean	X-HPCV
ALL	10540	375	1.14
FCblue@2.0	5000	576	1.25
FCred	2482	269	0.54
FCviolet	2369	85.8	1.14



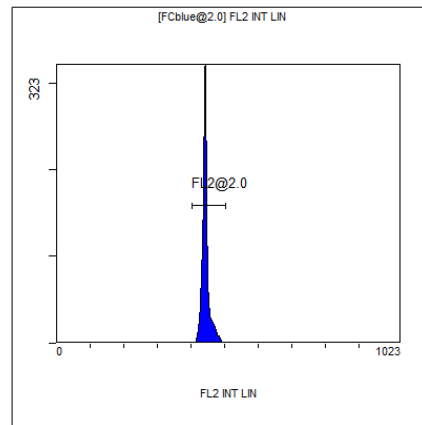
[Ungated] FS INT LIN

Region	Number	HP	X-CV	X-Mean
ALL	10540	1.14		375
FCblue@2.0	5000	1.25		576
FCred	2482	0.54		269
FCviolet	2369	1.14		85.8



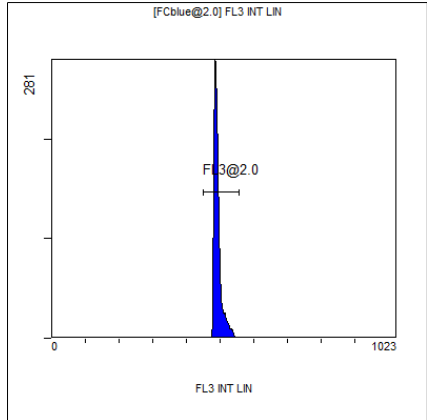
(5000) [FCblue@2.0] FL1 INT LIN

Region	Number	HP	X-CV	X-Mean
ALL	5000	0.86		495
FL1@2.0	4979	0.86		495



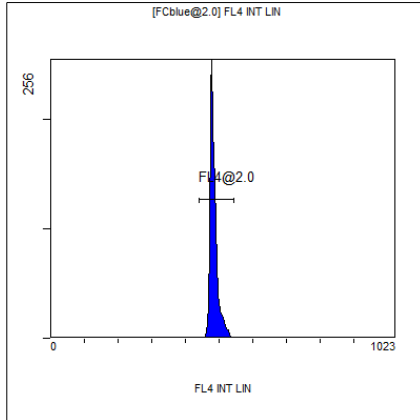
[FCblue@2.0] FL2 INT LIN

Region	Number	HP	X-CV	X-Mean
ALL	5000	0.77		443
FL2@2.0	4978	0.77		444



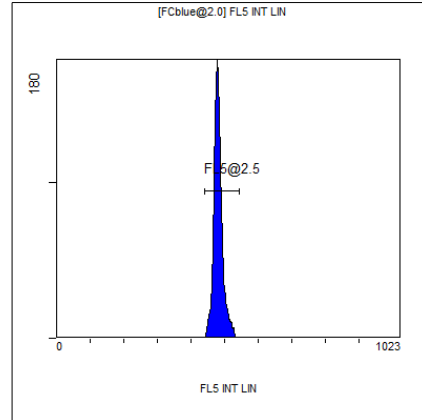
[FCblue@2.0] FL3 INT LIN

Region	Number	HP	X-CV	X-Mean
ALL	5000	1.19		492
FL3@2.0	4978	1.19		493



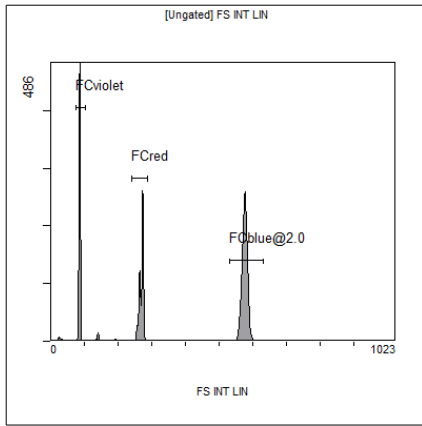
[FCblue@2.0] FL4 INT LIN

Region	Number	HP	X-CV	X-Mean
ALL	5000	1.31		484
FL4@2.0	4974	1.31		484



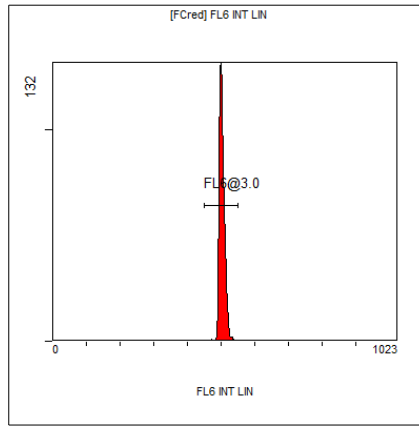
[FCblue@2.0] FL5 INT LIN

Region	Number	HP	X-CV	X-Mean
ALL	5000	1.94		481
FL5@2.5	4971	1.94		481



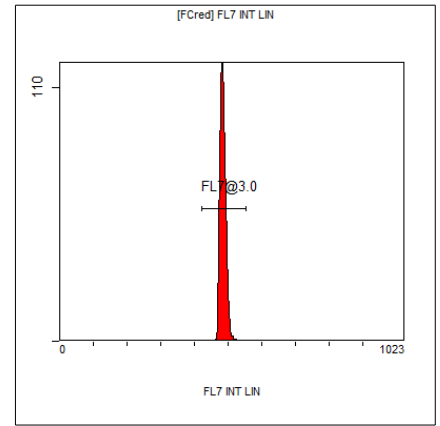
[Ungated] FS INT LIN

Region	Number	HP	X-CV	X-Mean
ALL	10540	1.14		375
FCblue@2.0	5000	1.25		576
FCred	2482	0.54		269
FCviolet	2369	1.14		85.8



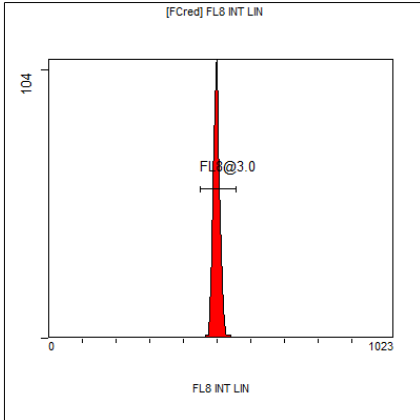
[FCred] FL6 INT LIN

Region	Number	HP	X-CV	X-Mean
ALL	2482	1.28		501
FL6@3.0	2470	1.28		503



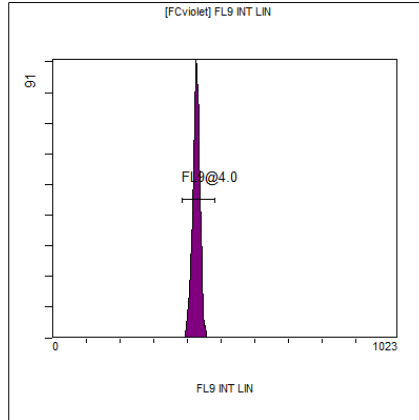
[FCred] FL7 INT LIN

Region	Number	HP	X-CV	X-Mean
ALL	2482	1.79		482
FL7@3.0	2471	1.79		484



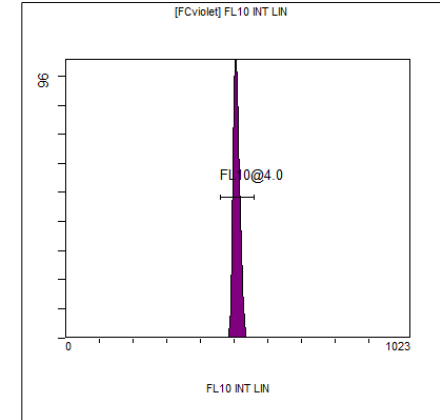
[FCred] FL8 INT LIN

Region	Number	HP	X-CV	X-Mean
ALL	2482	1.48		496
FL8@3.0	2470	1.48		498



[FCviolet] FL9 INT LIN

Region	Number	HP	X-CV	X-Mean
ALL	2369	1.81		426
FL9@4.0	2344	1.81		425



[FCviolet] FL10 INT LIN

Region	Number	HP	X-CV	X-Mean
ALL	2369	1.60		508
FL10@4.0	2344	1.60		507