

Institution: IRB

Protocol :Alignment Blue Red Violet_ALIGN.pro

Listmode Replay: Runtime Protocol

Analysis Date: 21-Nov-2011, 09:33:20

Settings File: Settings modified during acquisition, N/A

Listmode File: FlowCheck 2011-11-21 001.LMD

Run Date: 21-Nov-11, 09:28:19

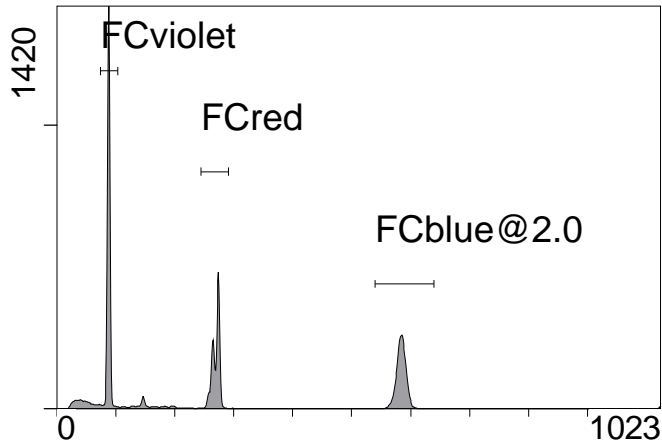
Sample ID: FlowCheck

User ID: duperray

Acquisition Time/Events: 66.3s / 19752 (PROTOCOL)

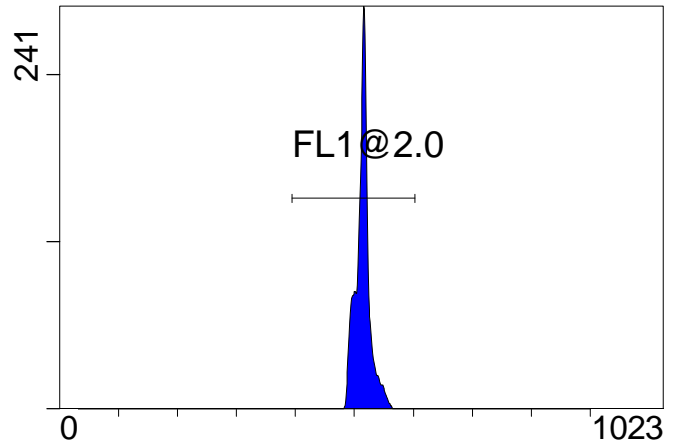
Instrument SN: AN11038 Software Version: Gallios 1.2

[Ungated] FS INT LIN



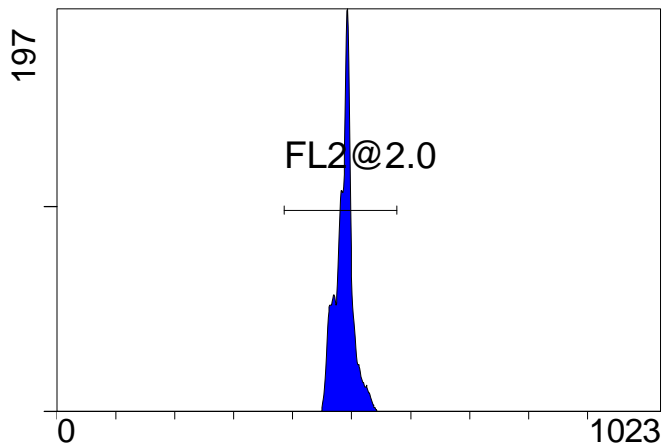
FS INT LIN

(3000) [FCblue@2.0] FL1 INT LIN



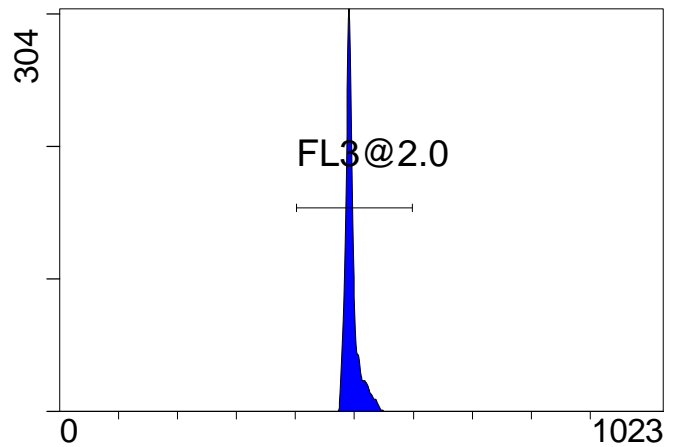
FL1 INT LIN

[FCblue@2.0] FL2 INT LIN



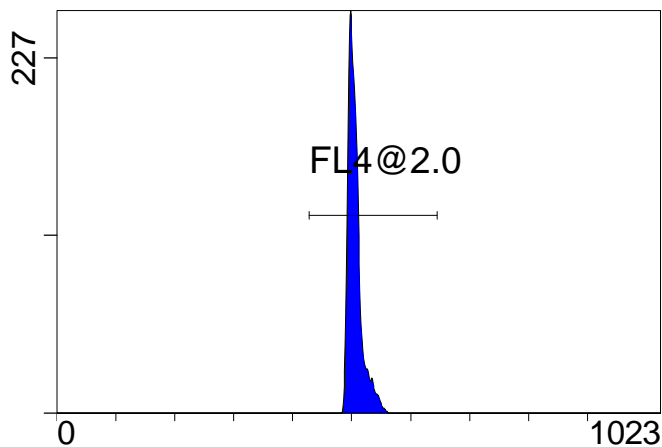
FL2 INT LIN

[FCblue@2.0] FL3 INT LIN



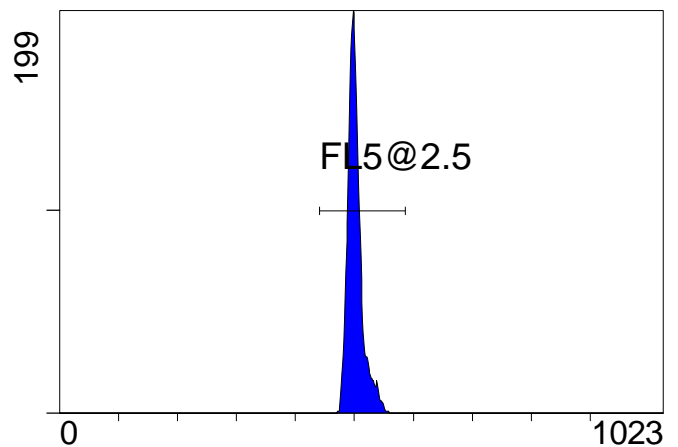
FL3 INT LIN

[FCblue@2.0] FL4 INT LIN



FL4 INT LIN

[FCblue@2.0] FL5 INT LIN



FL5 INT LIN

Institution: IRB

Protocol :Alignment Blue Red Violet_ALIGN.pro

Listmode Replay: Runtime Protocol

Analysis Date: 21-Nov-2011, 09:33:20

Settings File: Settings modified during acquisition, N/A

Listmode File: FlowCheck 2011-11-21 001.LMD

Run Date: 21-Nov-11, 09:28:19

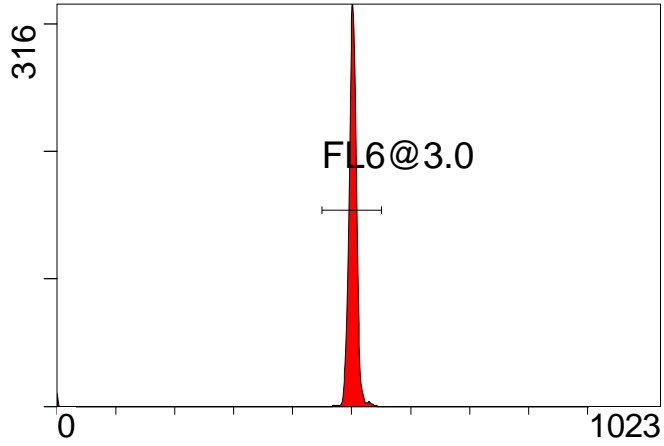
Sample ID: FlowCheck

User ID: duperray

Acquisition Time/Events: 66.3s / 19752 (PROTOCOL)

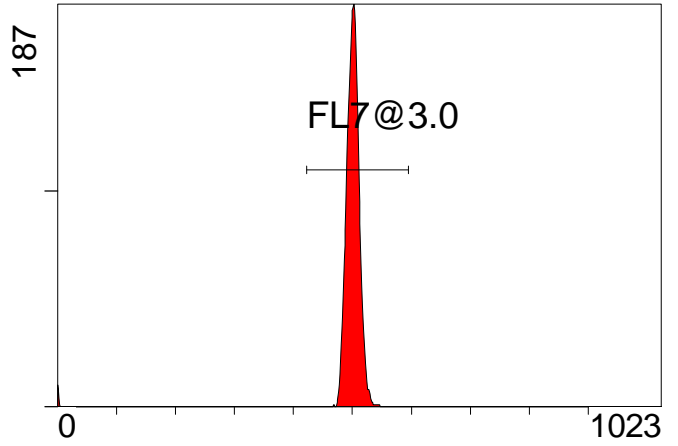
Instrument SN: AN11038 Software Version: Gallios 1.2

[FCred] FL6 INT LIN



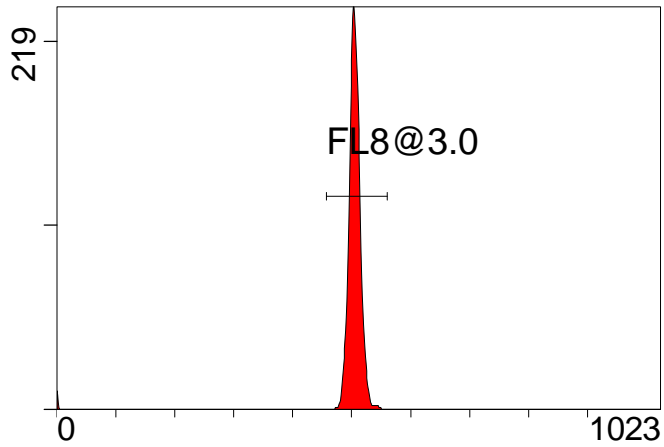
FL6 INT LIN

[FCred] FL7 INT LIN



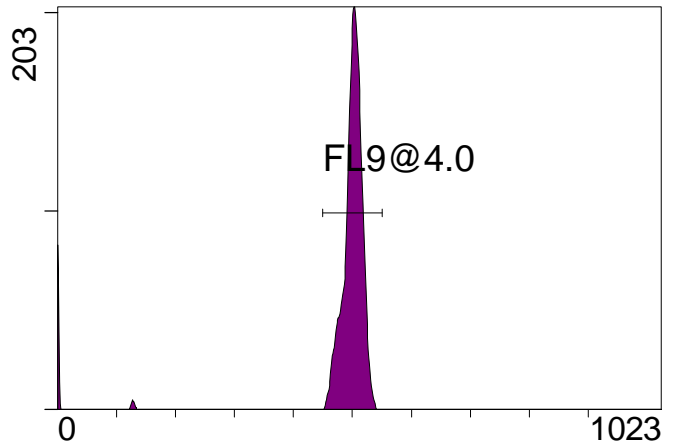
FL7 INT LIN

[FCred] FL8 INT LIN



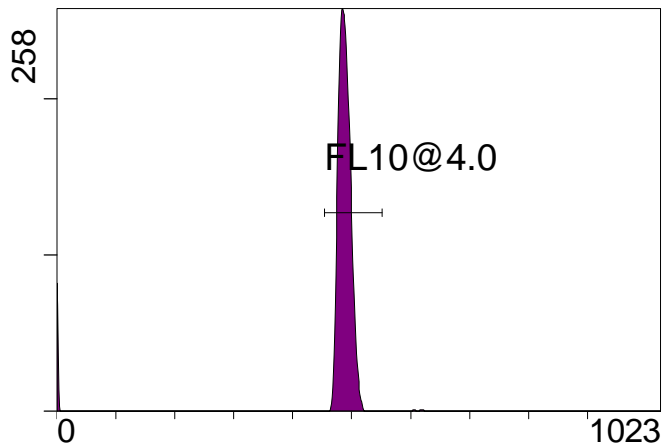
FL8 INT LIN

[FCviolet] FL9 INT LIN



FL9 INT LIN

[FCviolet] FL10 INT LIN



FL10 INT LIN

Statistical Analysis

PROGRAM INFORMATION

File:- FlowCheck 2011-11-21 001.LMD

Gate:- FCblue@2.0 [FCblue@2.0]

Compensation:-

Region	Number	X-Mean	X-HPCV
ALL	5000	513	0.86
ALL	5000	505	1.55
ALL	5000	501	1.53
ALL	5000	494	0.87
ALL	5000	487	0.93
FL1@2.0	4974	515	0.86
FL2@2.0	4974	488	0.93
FL3@2.0	4974	495	0.87
FL4@2.0	4973	506	1.55
FL5@2.5	4973	502	1.53

File:- FlowCheck 2011-11-21 001.LMD

Gate:- FCred [FCred]

Compensation:-

Region	Number	X-Mean	X-HPCV
ALL	4878	501	1.49
ALL	4878	496	1.79
ALL	4878	497	1.08
FL6@3.0	4828	502	1.08
FL7@3.0	4831	501	1.79
FL8@3.0	4824	505	1.49

File:- FlowCheck 2011-11-21 001.LMD

Gate:- FCviolet [FCviolet]

Compensation:-

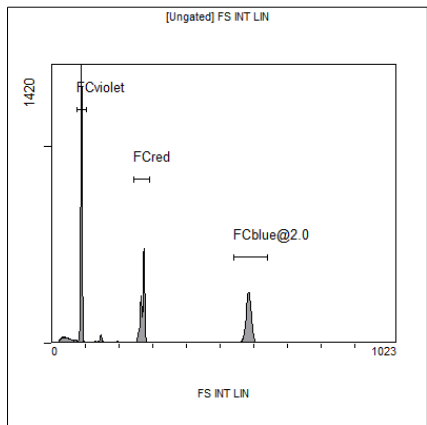
Region	Number	X-Mean	X-HPCV
ALL	7159	466	###
ALL	7159	474	###
FL10@4.0	6743	488	2.11
FL9@4.0	6743	501	2.09

File:- FlowCheck 2011-11-21 001.LMD

Gate:- Ungated

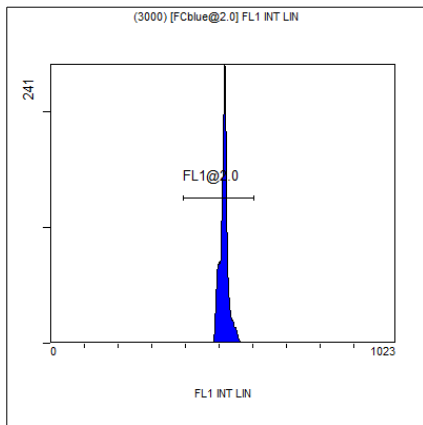
Compensation:-

Region	Number	X-Mean	X-HPCV
ALL	19752	267	1.04
FCblue@2.0	5000	584	1.18
FCred	4878	270	0.65
FCviolet	7159	87.8	1.04



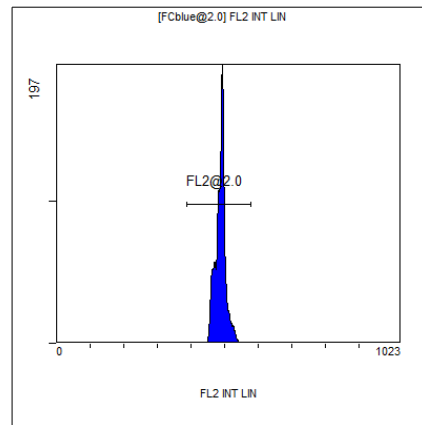
[Ungated] FS INT LIN

Region	Number	HP	X-CV	X-Mean
ALL	19752	1.04		267
FCblue@2.0	5000	1.18		584
FCred	4878	0.65		270
FCviolet	7159	1.04		87.8



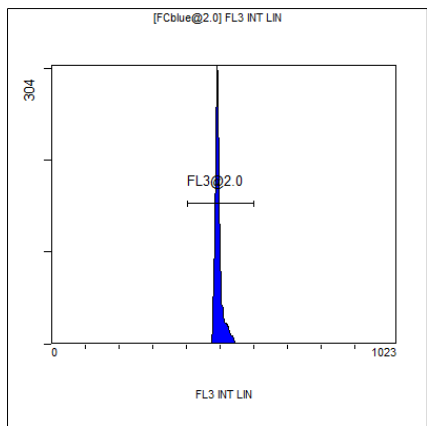
(3000) [FCblue@2.0] FL1 INT LIN

Region	Number	HP	X-CV	X-Mean
ALL	5000	0.86		513
FL1@2.0	4974	0.86		515



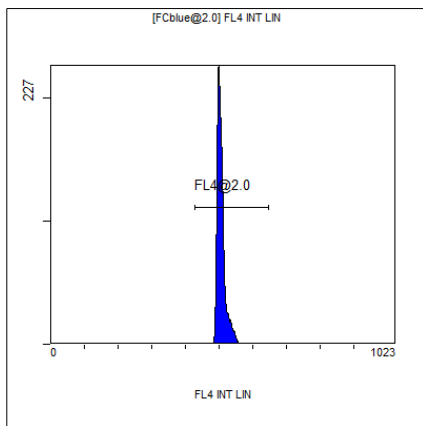
[FCblue@2.0] FL2 INT LIN

Region	Number	HP	X-CV	X-Mean
ALL	5000	0.93		487
FL2@2.0	4974	0.93		488



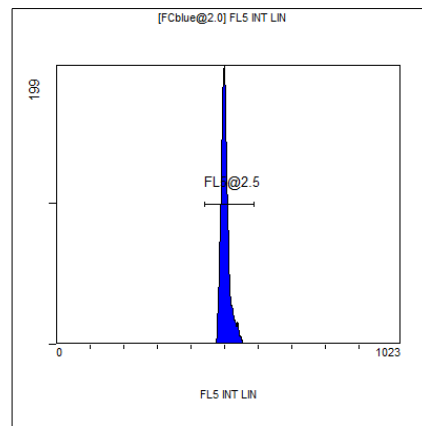
[FCblue@2.0] FL3 INT LIN

Region	Number	HP	X-CV	X-Mean
ALL	5000	0.87		494
FL3@2.0	4974	0.87		495



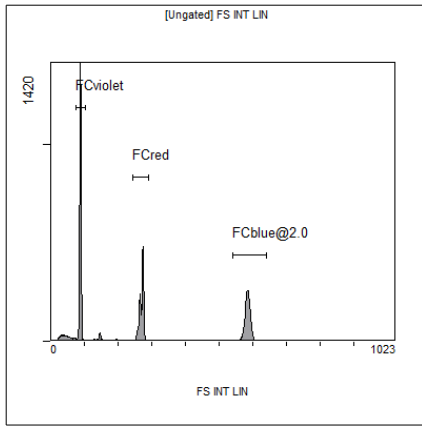
[FCblue@2.0] FL4 INT LIN

Region	Number	HP	X-CV	X-Mean
ALL	5000	1.55		505
FL4@2.0	4973	1.55		506



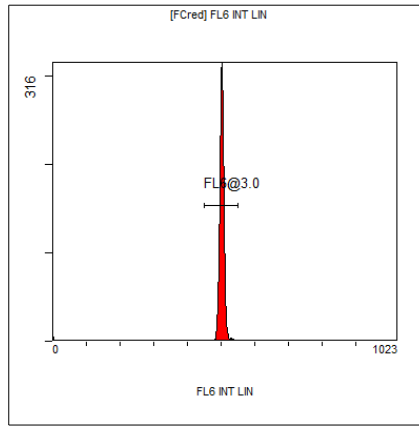
[FCblue@2.0] FL5 INT LIN

Region	Number	HP	X-CV	X-Mean
ALL	5000	1.53		501
FL5@2.5	4973	1.53		502



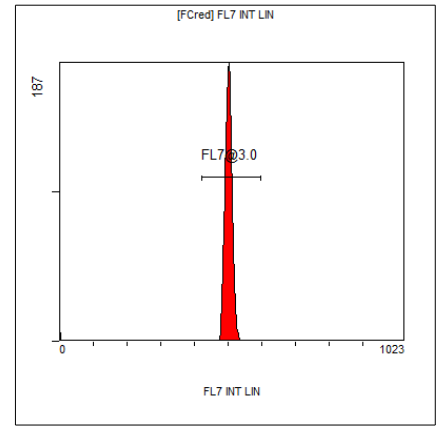
[Ungated] FS INT LIN

Region	Number	HP X-CV	X-Mean
ALL	19752	1.04	267
FCblue@2.0	5000	1.18	584
FCred	4878	0.65	270
FCviolet	7159	1.04	87.8



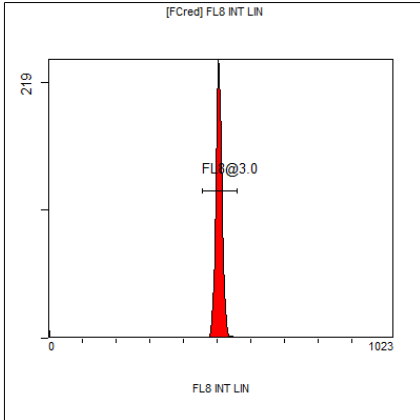
[FCred] FL6 INT LIN

Region	Number	HP X-CV	X-Mean
ALL	4878	1.08	497
FL6@3.0	4828	1.08	502



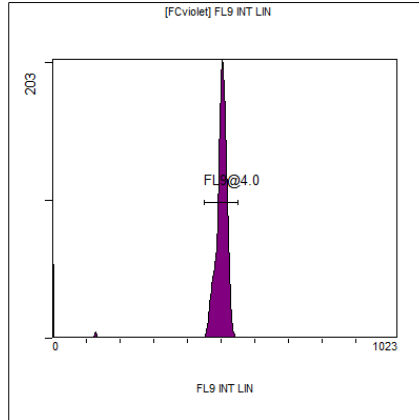
[FCred] FL7 INT LIN

Region	Number	HP X-CV	X-Mean
ALL	4878	1.79	496
FL7@3.0	4831	1.79	501



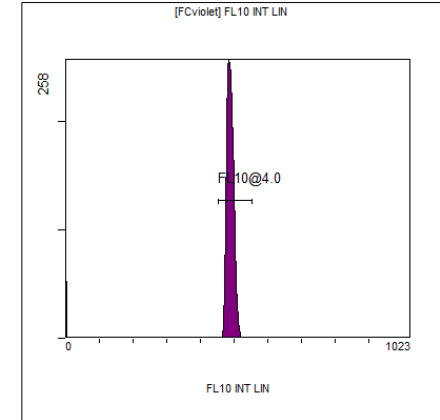
[FCred] FL8 INT LIN

Region	Number	HP X-CV	X-Mean
ALL	4878	1.49	501
FL8@3.0	4824	1.49	505



[FCviolet] FL9 INT LIN

Region	Number	HP X-CV	X-Mean
ALL	7159	###	474
FL9@4.0	6743	2.09	501



[FCviolet] FL10 INT LIN

Region	Number	HP X-CV	X-Mean
ALL	7159	###	466
FL10@4.0	6743	2.11	488