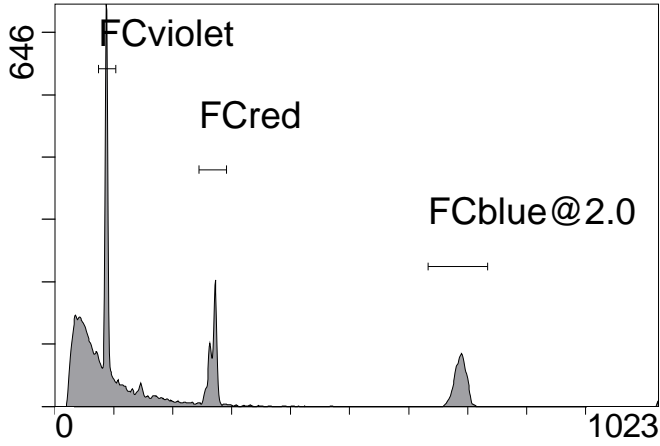


Institution: IRB  
Protocol :Alignment Blue Red Violet\_ALIGN.pro  
Listmode Replay: Runtime Protocol  
Analysis Date: 05-Dec-2011, 10:12:47  
Settings File: Settings modified during acquisition, N/A  
Listmode File: FlowCheck 2011-12-05 001.LMD

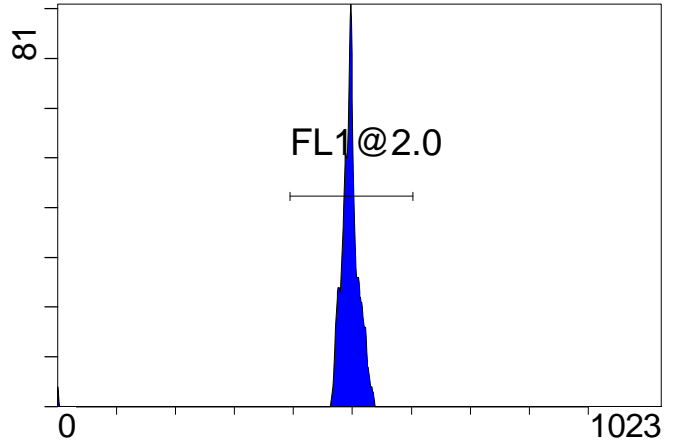
Run Date: 05-Dec-11, 10:10:11  
Sample ID: FlowCheck  
User ID: duperray  
Acquisition Time/Events: 57.2s / 18250 (MANUAL)  
Instrument SN: AN11038 Software Version: Gallios 1.2

[Ungated] FS INT LIN



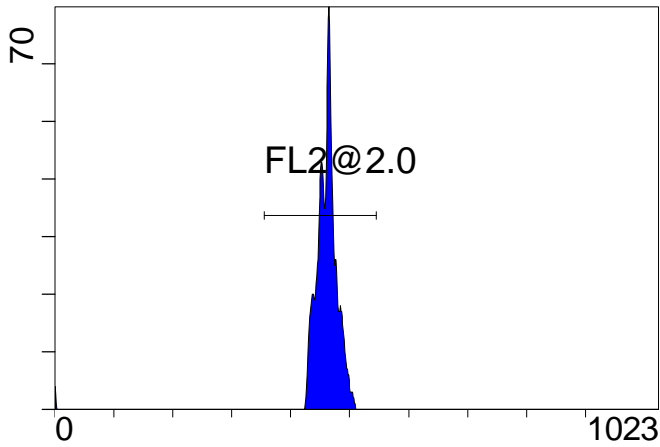
FS INT LIN

(5000) [FCblue@2.0] FL1 INT LIN



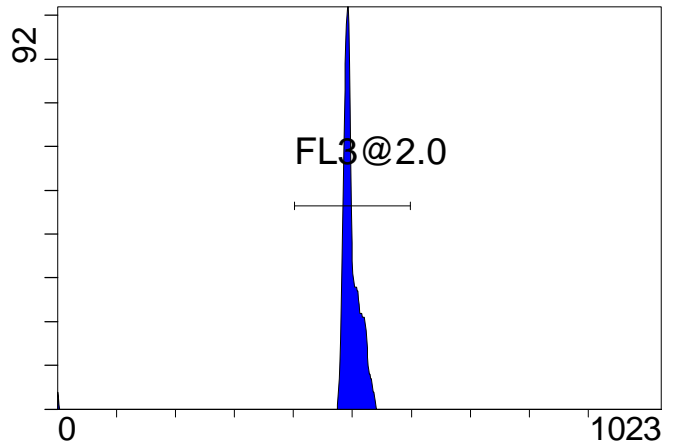
FL1 INT LIN

[FCblue@2.0] FL2 INT LIN



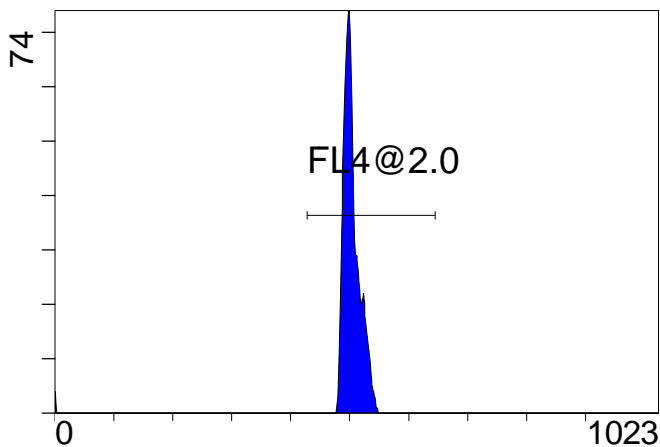
FL2 INT LIN

[FCblue@2.0] FL3 INT LIN



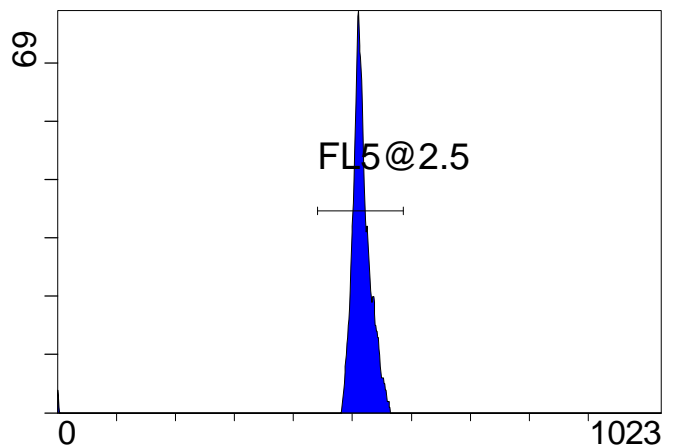
FL3 INT LIN

[FCblue@2.0] FL4 INT LIN



FL4 INT LIN

[FCblue@2.0] FL5 INT LIN



FL5 INT LIN

Institution: IRB

Run Date: 05-Dec-11, 10:10:11

Protocol :Alignment Blue Red Violet\_ALIGN.pro

Sample ID: FlowCheck

Listmode Replay: Runtime Protocol

User ID: duperray

Analysis Date: 05-Dec-2011, 10:12:47

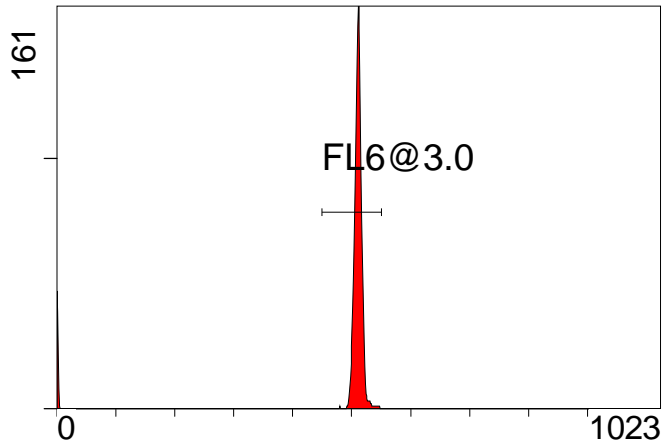
Acquisition Time/Events: 57.2s / 18250 (MANUAL)

Settings File: Settings modified during acquisition, N/A

Instrument SN: AN11038 Software Version: Gallios 1.2

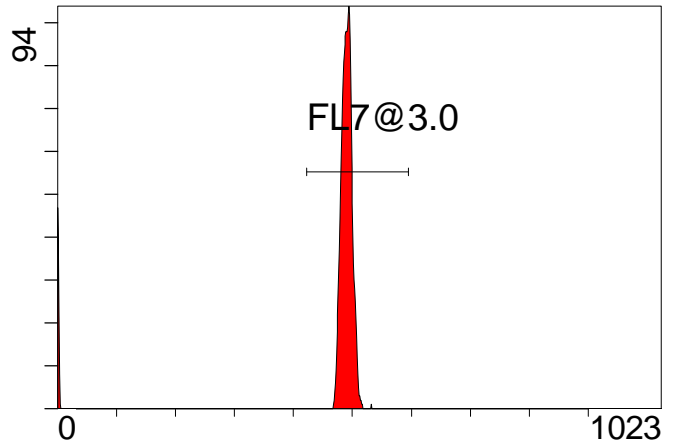
Listmode File: FlowCheck 2011-12-05 001.LMD

[FCred] FL6 INT LIN



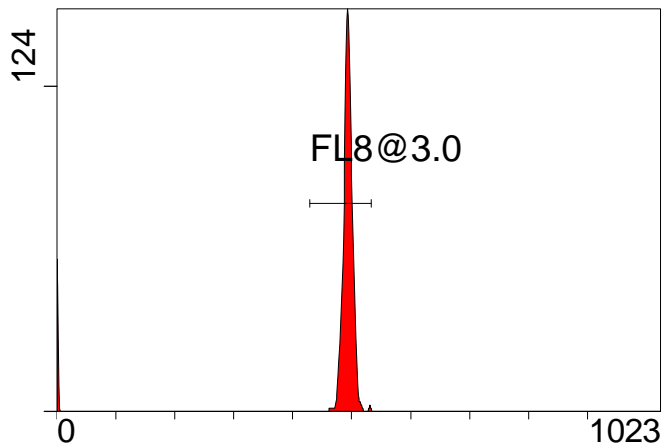
FL6 INT LIN

[FCred] FL7 INT LIN



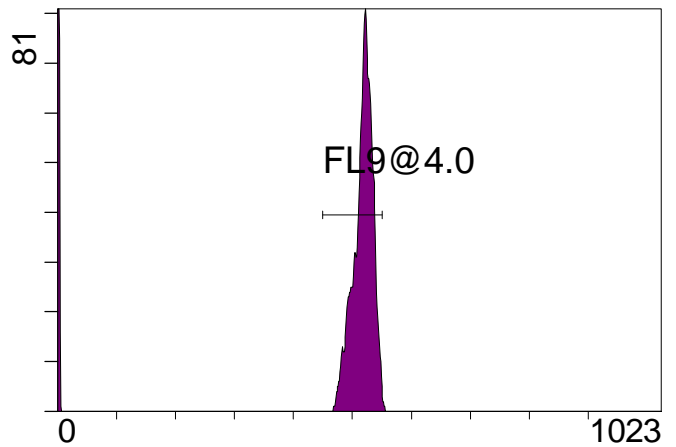
FL7 INT LIN

[FCred] FL8 INT LIN



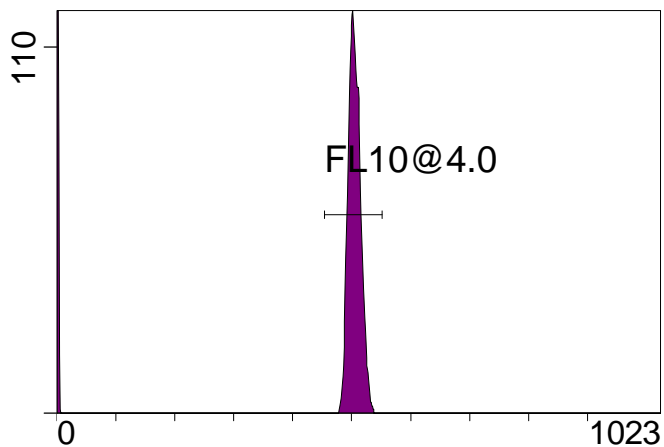
FL8 INT LIN

[FCviolet] FL9 INT LIN



FL9 INT LIN

[FCviolet] FL10 INT LIN



FL10 INT LIN

**Statistical Analysis**

**PROGRAM INFORMATION**

File:- FlowCheck 2011-12-05 001.LMD

Gate:- FCblue@2.0 [FCblue@2.0]

Compensation:-

Region	Number	X-Mean	X-HPCV
ALL	2156	499	1.60
ALL	2156	494	1.10
ALL	2156	457	0.73
ALL	2156	511	1.01
ALL	2156	492	0.71
FL1@2.0	2132	497	0.71
FL2@2.0	2132	462	0.73
FL3@2.0	2132	499	1.10
FL4@2.0	2132	504	1.60
FL5@2.5	2131	517	1.01

File:- FlowCheck 2011-12-05 001.LMD

Gate:- FCred [FCred]

Compensation:-

Region	Number	X-Mean	X-HPCV
ALL	2429	450	###
ALL	2429	453	###
ALL	2429	469	###
FL6@3.0	2229	511	0.79
FL7@3.0	2229	490	1.59
FL8@3.0	2223	494	1.03

File:- FlowCheck 2011-12-05 001.LMD

Gate:- FCviolet [FCviolet]

Compensation:-

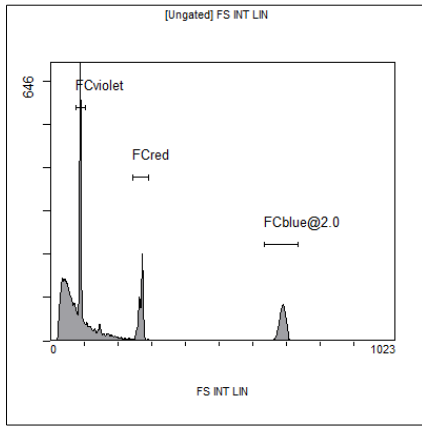
Region	Number	X-Mean	X-HPCV
ALL	4608	315	###
ALL	4608	323	###
FL10@4.0	2866	505	1.76
FL9@4.0	2835	517	1.70

File:- FlowCheck 2011-12-05 001.LMD

Gate:- Ungated

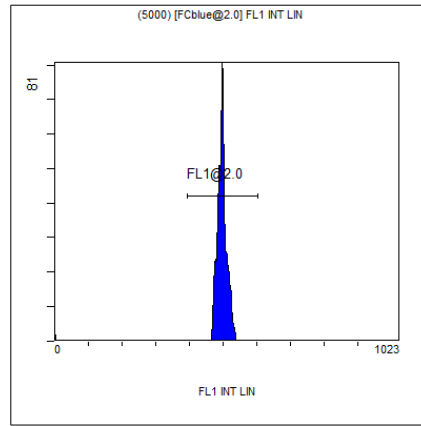
Compensation:-

Region	Number	X-Mean	X-HPCV
ALL	18250	190	1.15
FCblue@2.0	2156	688	1.16
FCred	2429	268	0.76
FCviolet	4608	87.3	1.15



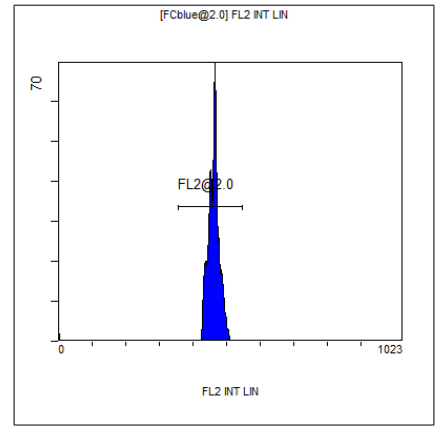
[Ungated] FS INT LIN

Region	Number	HP X-CV	X-Mean
ALL	18250	1.15	190
FCblue@2.0	2156	1.16	688
FCred	2429	0.76	268
FCviolet	4608	1.15	87.3



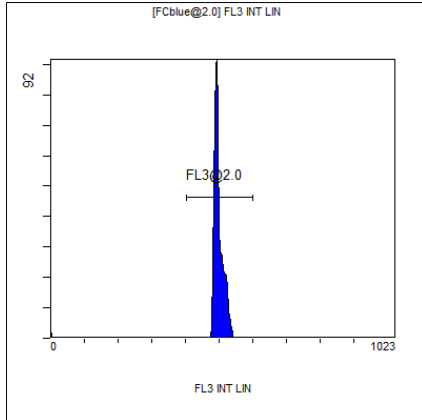
(5000) [FCblue@2.0] FL1 INT LIN

Region	Number	HP X-CV	X-Mean
ALL	2156	0.71	492
FL1@2.0	2132	0.71	497



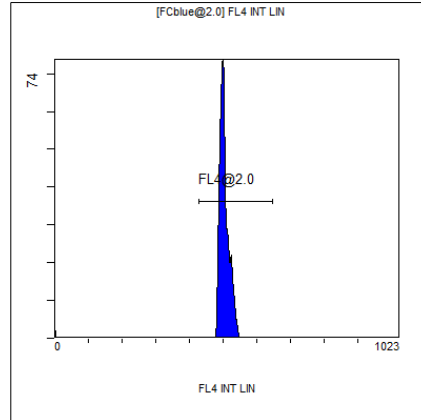
[FCblue@2.0] FL2 INT LIN

Region	Number	HP X-CV	X-Mean
ALL	2156	0.73	457
FL2@2.0	2132	0.73	462



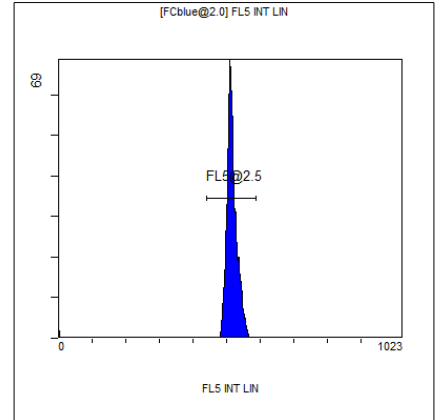
[FCblue@2.0] FL3 INT LIN

Region	Number	HP X-CV	X-Mean
ALL	2156	1.10	494
FL3@2.0	2132	1.10	499



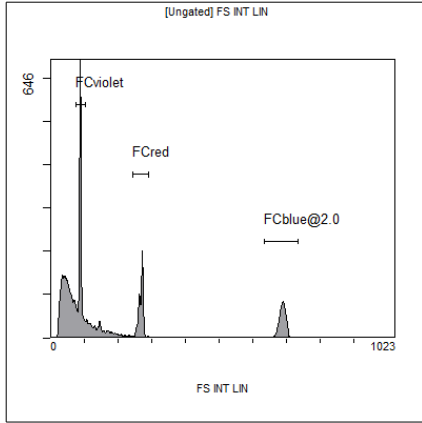
[FCblue@2.0] FL4 INT LIN

Region	Number	HP X-CV	X-Mean
ALL	2156	1.60	499
FL4@2.0	2132	1.60	504



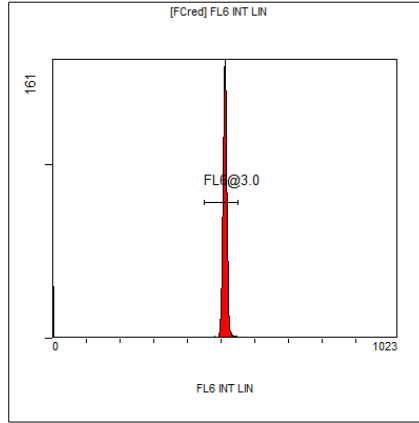
[FCblue@2.0] FL5 INT LIN

Region	Number	HP X-CV	X-Mean
ALL	2156	1.01	511
FL5@2.5	2131	1.01	517



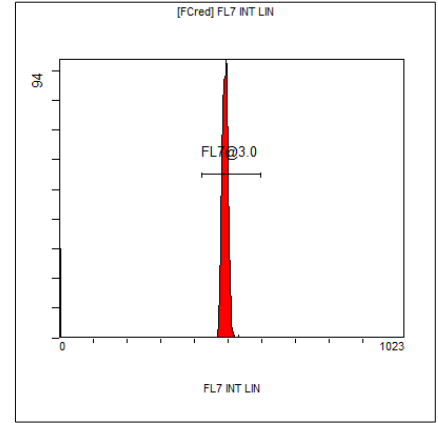
[Ungated] FS INT LIN

Region	Number	HP X-CV	X-Mean
ALL	18250	1.15	190
FCblue@2.0	2156	1.16	688
FCred	2429	0.76	268
FCviolet	4608	1.15	87.3



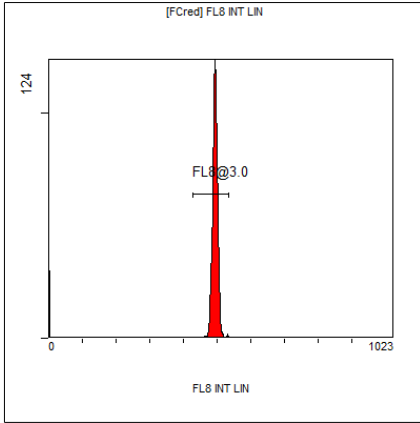
[FCred] FL6 INT LIN

Region	Number	HP X-CV	X-Mean
ALL	2429	###	469
FL6@3.0	2229	0.79	511



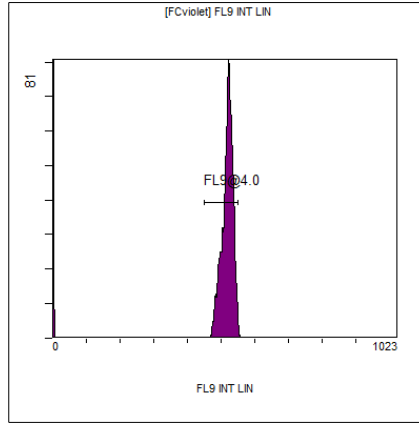
[FCred] FL7 INT LIN

Region	Number	HP X-CV	X-Mean
ALL	2429	###	450
FL7@3.0	2229	1.59	490



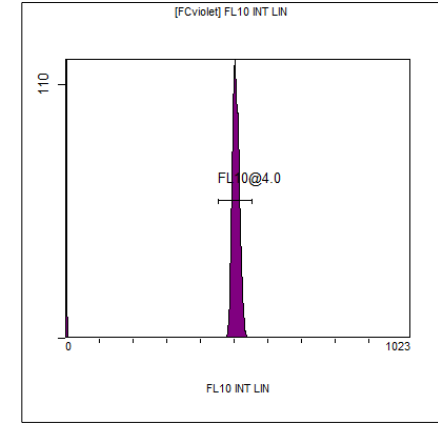
[FCred] FL8 INT LIN

Region	Number	HP X-CV	X-Mean
ALL	2429	###	453
FL8@3.0	2223	1.03	494



[FCviolet] FL9 INT LIN

Region	Number	HP X-CV	X-Mean
ALL	4608	###	323
FL9@4.0	2835	1.70	517



[FCviolet] FL10 INT LIN

Region	Number	HP X-CV	X-Mean
ALL	4608	###	315
FL10@4.0	2866	1.76	505