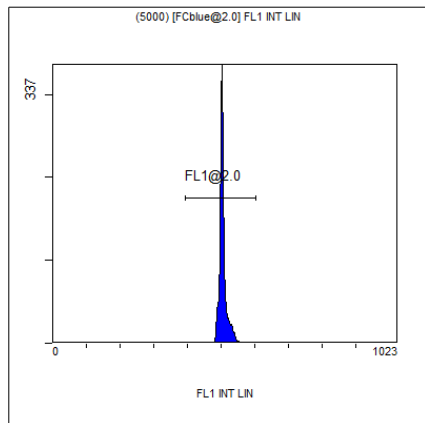


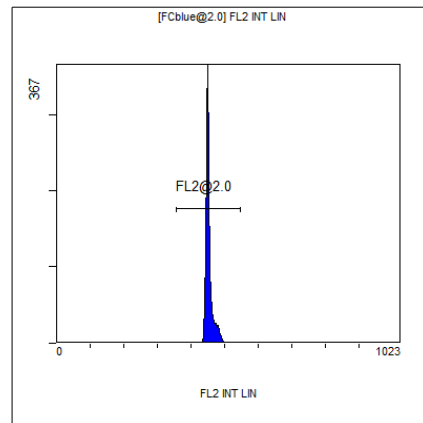
[Ungated] FS INT LIN

Region	Number	HP X-CV	X-Mean
ALL	11023	1.22	360
FCblue@2.0	5000	1.12	578
FCred	2306	0.55	268
FCviolet	2394	1.22	87.1



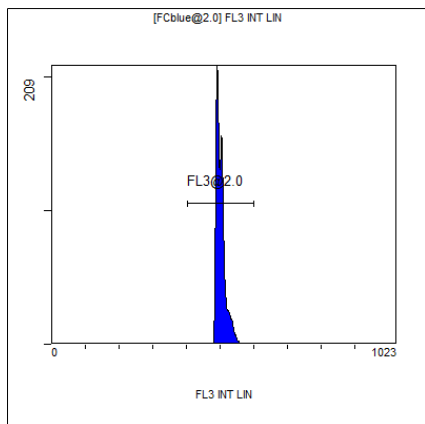
(5000) [FCblue@2.0] FL1 INT LIN

Region	Number	HP X-CV	X-Mean
ALL	5000	0.77	505
FL1@2.0	4982	0.77	505



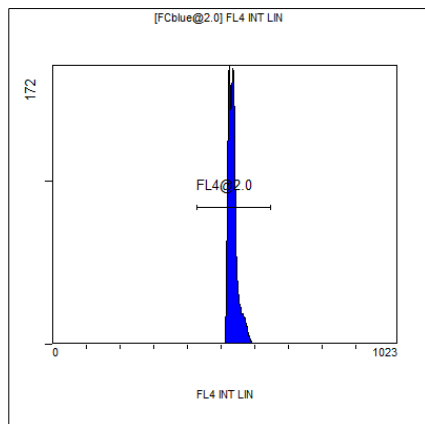
[FCblue@2.0] FL2 INT LIN

Region	Number	HP X-CV	X-Mean
ALL	5000	0.83	453
FL2@2.0	4982	0.83	454



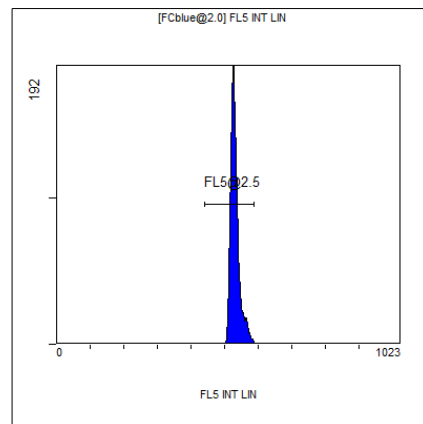
[FCblue@2.0] FL3 INT LIN

Region	Number	HP X-CV	X-Mean
ALL	5000	1.89	502
FL3@2.0	4982	1.89	502



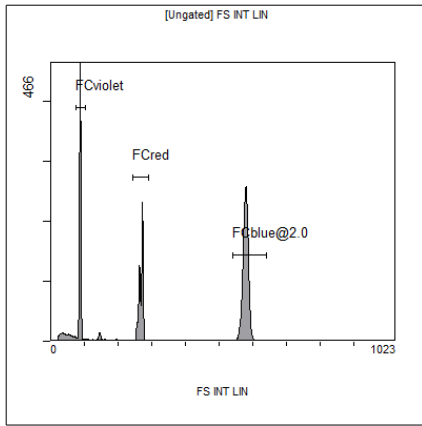
[FCblue@2.0] FL4 INT LIN

Region	Number	HP X-CV	X-Mean
ALL	5000	1.92	535
FL4@2.0	4982	1.92	535



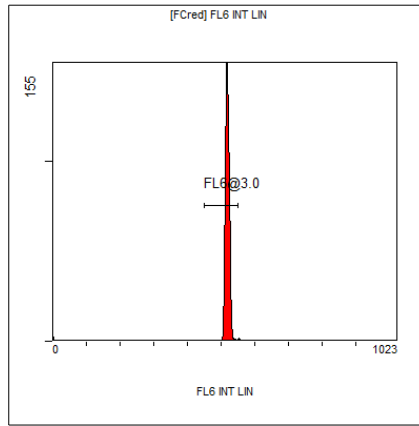
[FCblue@2.0] FL5 INT LIN

Region	Number	HP X-CV	X-Mean
ALL	5000	1.57	531
FL5@2.5	4957	1.57	531



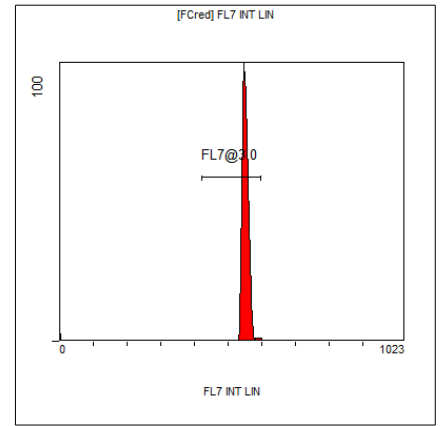
[Ungated] FS INT LIN

Region	Number	HP X-CV	X-Mean
ALL	11023	1.22	360
FCblue@2.0	5000	1.12	578
FCred	2306	0.55	268
FCviolet	2394	1.22	87.1



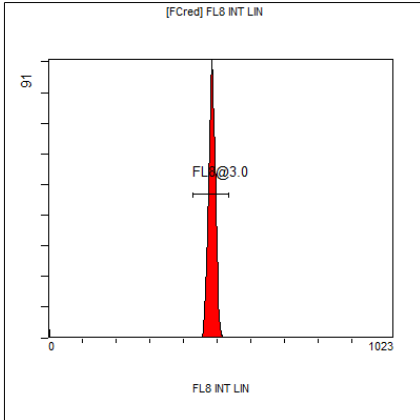
[FCred] FL6 INT LIN

Region	Number	HP X-CV	X-Mean
ALL	2306	0.96	513
FL6@3.0	2253	0.96	519



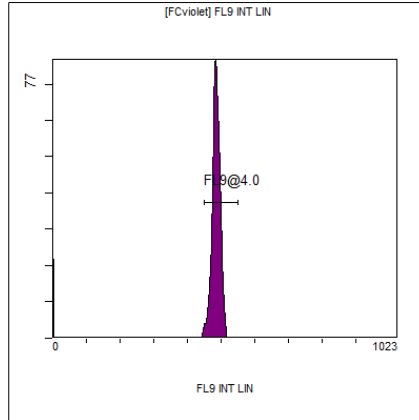
[FCred] FL7 INT LIN

Region	Number	HP X-CV	X-Mean
ALL	2306	1.26	545
FL7@3.0	2265	1.26	551



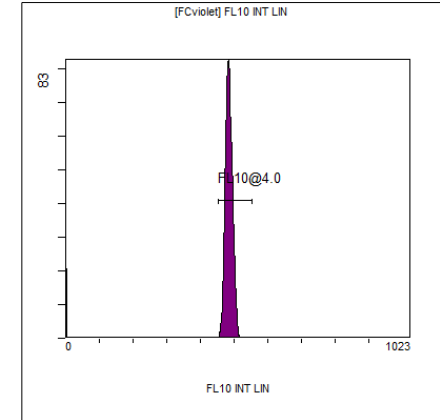
[FCred] FL8 INT LIN

Region	Number	HP X-CV	X-Mean
ALL	2306	1.63	479
FL8@3.0	2275	1.63	485



[FCviolet] FL9 INT LIN

Region	Number	HP X-CV	X-Mean
ALL	2394	###	456
FL9@4.0	2218	2.07	485



[FCviolet] FL10 INT LIN

Region	Number	HP X-CV	X-Mean
ALL	2394	###	457
FL10@4.0	2242	2.21	484