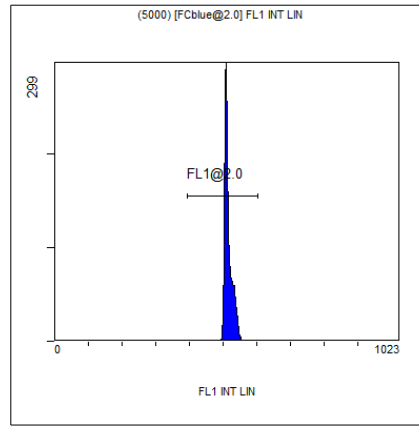


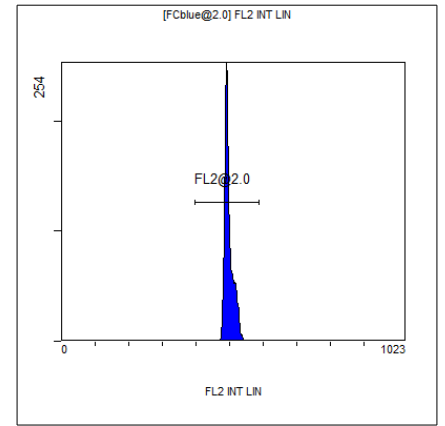
[Ungated] FS INT LIN

Region	Number	HP	X-CV	X-Mean
ALL	11058	1.30	422	
FCblue@2.0	5000	1.22	696	
FCred	2551	0.71	274	
FCviolet	2756	1.30	89	



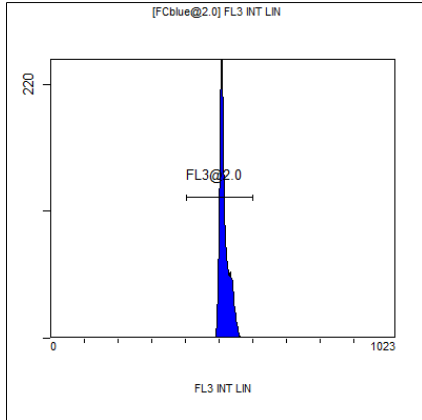
(5000) [FCblue@2.0] FL1 INT LIN

Region	Number	HP	X-CV	X-Mean
ALL	5000	0.72	515	
FL1@2.0	4997	0.72	515	



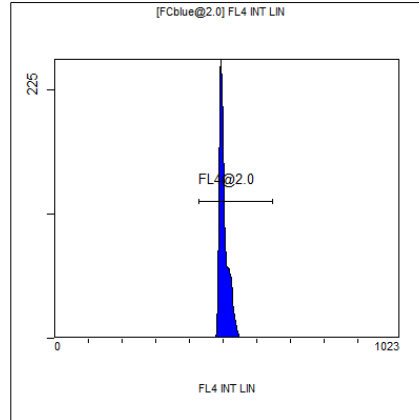
[FCblue@2.0] FL2 INT LIN

Region	Number	HP	X-CV	X-Mean
ALL	5000	0.89	498	
FL2@2.0	4997	0.89	498	



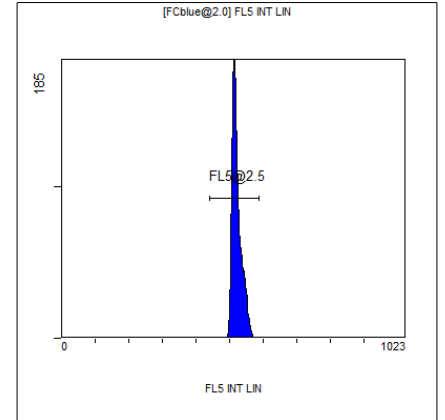
[FCblue@2.0] FL3 INT LIN

Region	Number	HP	X-CV	X-Mean
ALL	5000	1.05	516	
FL3@2.0	4996	1.05	515	



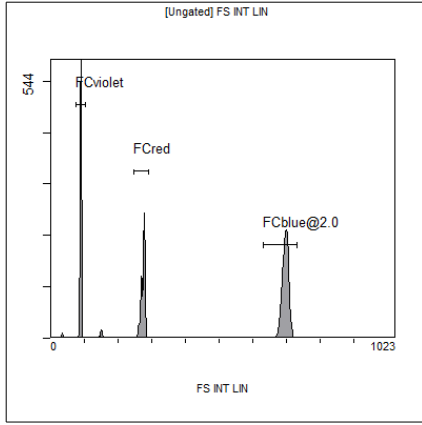
[FCblue@2.0] FL4 INT LIN

Region	Number	HP	X-CV	X-Mean
ALL	5000	1.19	502	
FL4@2.0	4997	1.19	502	



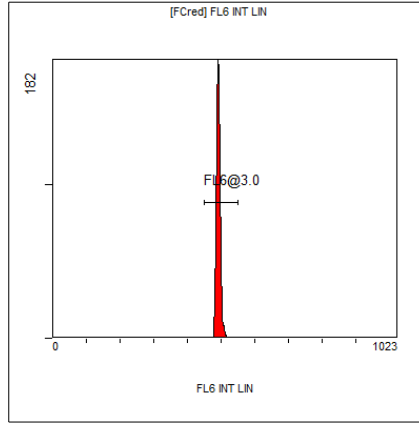
[FCblue@2.0] FL5 INT LIN

Region	Number	HP	X-CV	X-Mean
ALL	5000	1.38	522	
FL5@2.5	4995	1.38	522	



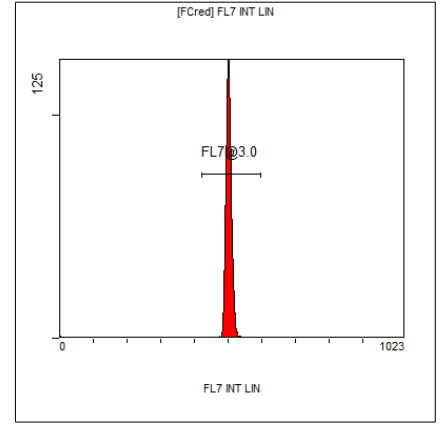
[Ungated] FS INT LIN

Region	Number	HP X-CV	X-Mean
ALL	11058	1.30	422
FCblue@2.0	5000	1.22	696
FCred	2551	0.71	274
FCviolet	2756	1.30	89



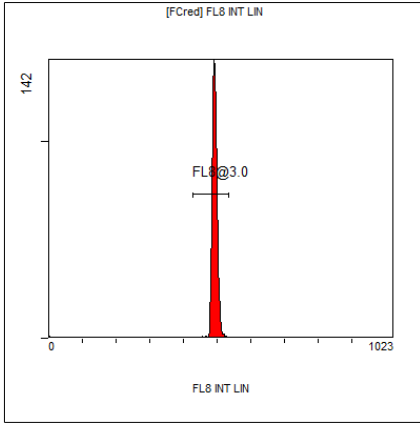
[FCred] FL6 INT LIN

Region	Number	HP X-CV	X-Mean
ALL	2551	0.99	488
FL6@3.0	2530	0.99	492



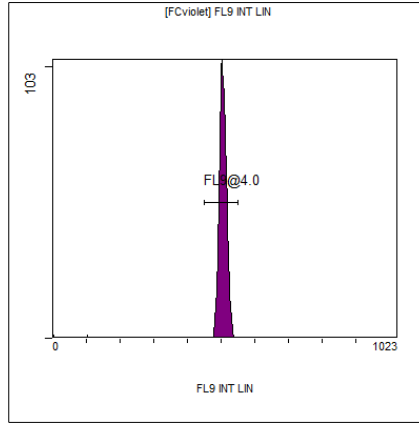
[FCred] FL7 INT LIN

Region	Number	HP X-CV	X-Mean
ALL	2551	1.42	498
FL7@3.0	2532	1.42	502



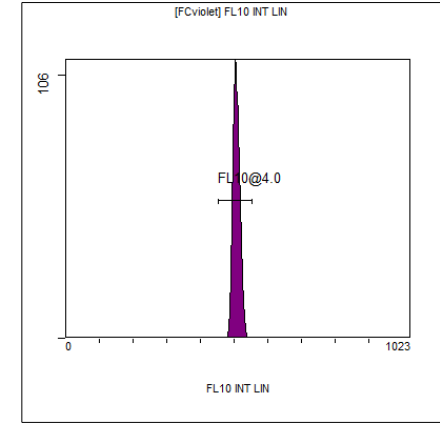
[FCred] FL8 INT LIN

Region	Number	HP X-CV	X-Mean
ALL	2551	1.27	490
FL8@3.0	2528	1.27	493



[FCviolet] FL9 INT LIN

Region	Number	HP X-CV	X-Mean
ALL	2756	1.64	500
FL9@4.0	2719	1.64	505



[FCviolet] FL10 INT LIN

Region	Number	HP X-CV	X-Mean
ALL	2756	1.78	504
FL10@4.0	2737	1.78	507