

Institution: IRB

Run Date: 13-Feb-12, 08:53:57

Protocol :Alignment Blue Red Violet\_ALIGN.pro

Sample ID: FlowCheck

Listmode Replay: Runtime Protocol

User ID: duperray

Analysis Date: 13-Feb-2012, 08:57:51

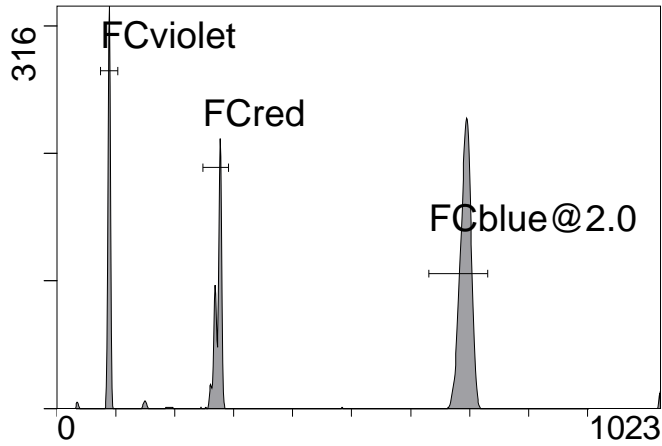
Acquisition Time/Events: 121.0s / 8854 (PROTOCOL)

Settings File: Alignment Blue Red Violet\_ALIGN.pro, 13-Feb-2012, 08:55:31

Listmode File: FlowCheck 2012-02-13 001.LMD

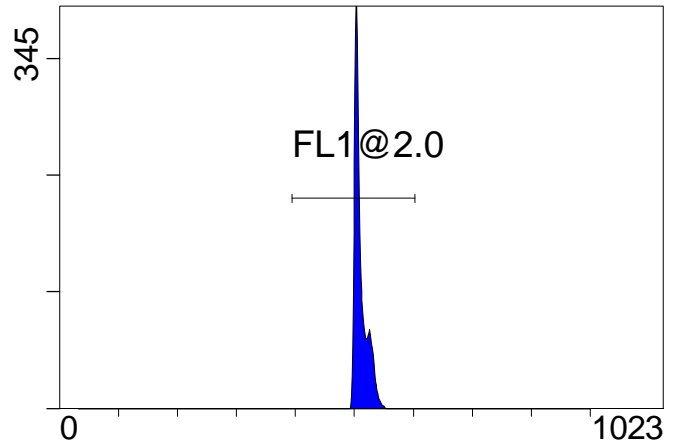
Instrument SN: AN11038 Software Version: Gallios 1.2

[Ungated] FS INT LIN



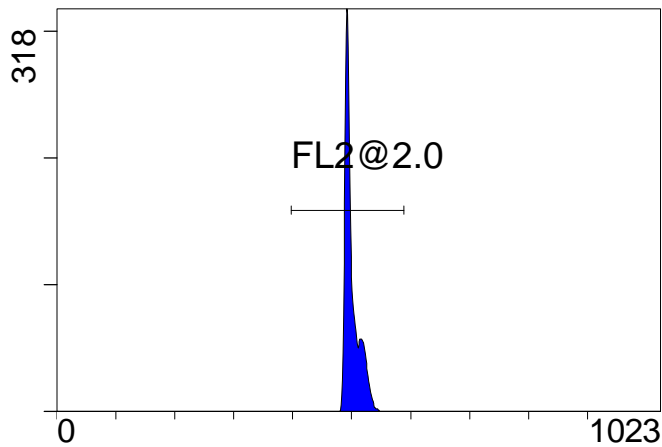
FS INT LIN

(3000) [FCblue@2.0] FL1 INT LIN



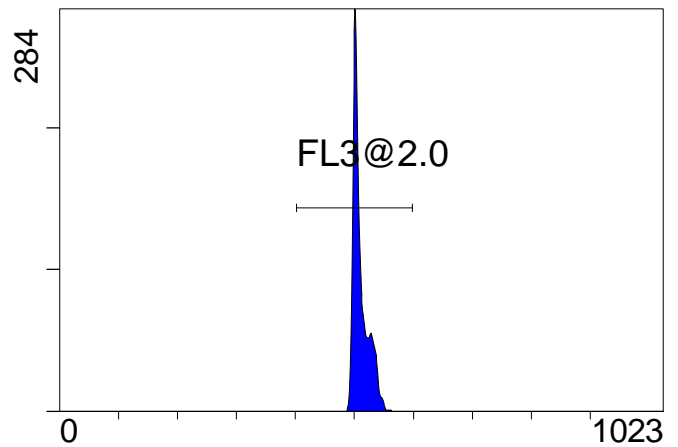
FL1 INT LIN

[FCblue@2.0] FL2 INT LIN



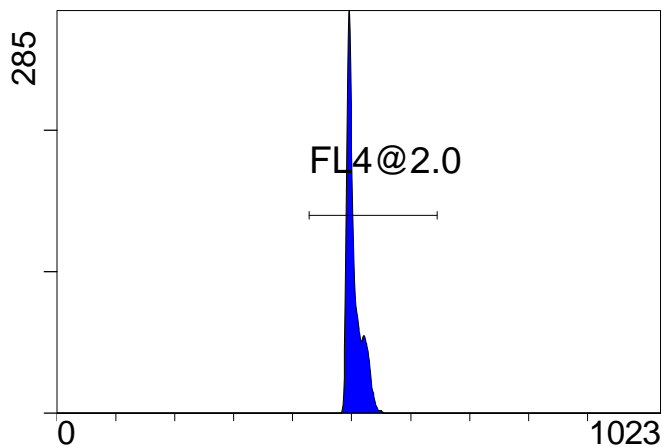
FL2 INT LIN

[FCblue@2.0] FL3 INT LIN



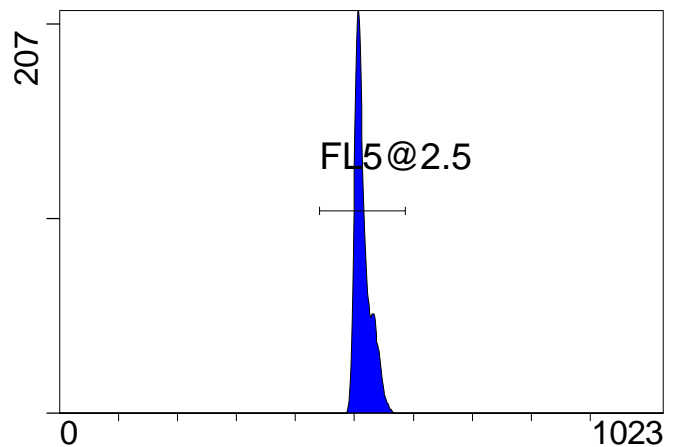
FL3 INT LIN

[FCblue@2.0] FL4 INT LIN



FL4 INT LIN

[FCblue@2.0] FL5 INT LIN



FL5 INT LIN

Institution: IRB

Run Date: 13-Feb-12, 08:53:57

Protocol :Alignment Blue Red Violet\_ALIGN.pro

Sample ID: FlowCheck

Listmode Replay: Runtime Protocol

User ID: duperray

Analysis Date: 13-Feb-2012, 08:57:51

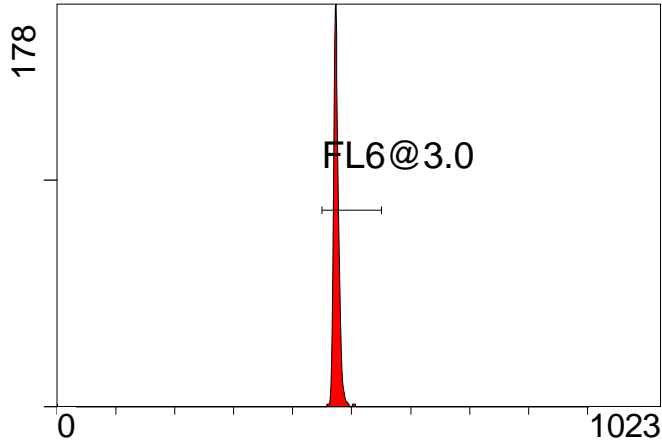
Acquisition Time/Events: 121.0s / 8854 (PROTOCOL)

Settings File: Alignment Blue Red Violet\_ALIGN.pro, 13-Feb-2012, 08:55:31

Listmode File: FlowCheck 2012-02-13 001.LMD

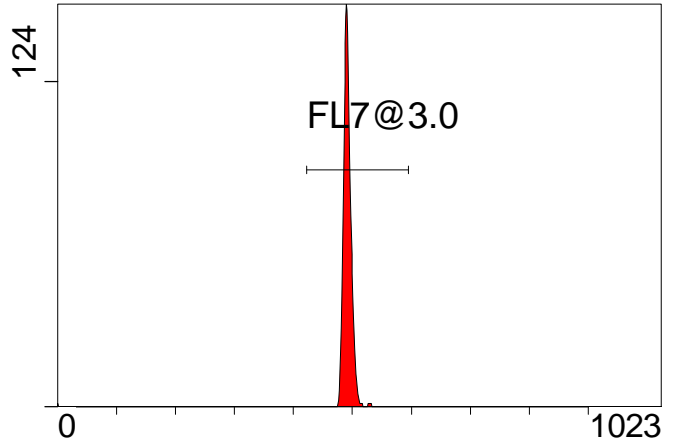
Instrument SN: AN11038 Software Version: Gallios 1.2

[FCred] FL6 INT LIN



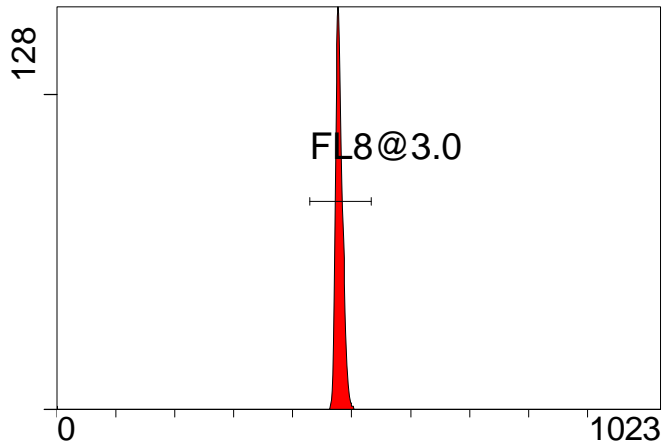
FL6 INT LIN

[FCred] FL7 INT LIN



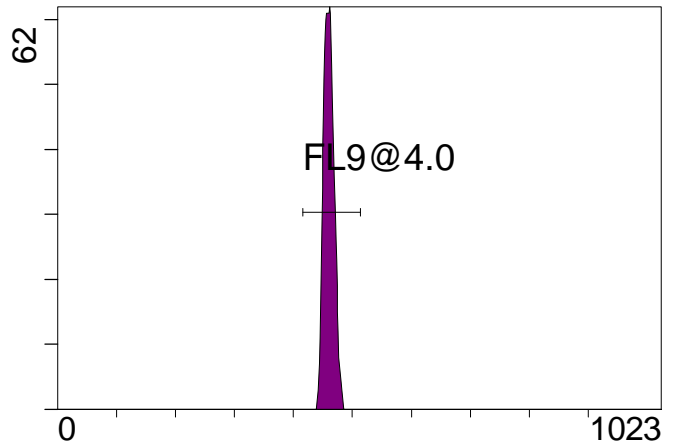
FL7 INT LIN

[FCred] FL8 INT LIN



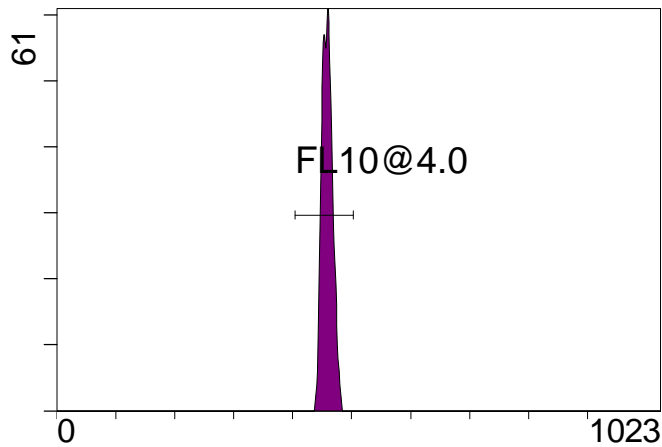
FL8 INT LIN

[FCviolet] FL9 INT LIN



FL9 INT LIN

[FCviolet] FL10 INT LIN



FL10 INT LIN

**Statistical Analysis**

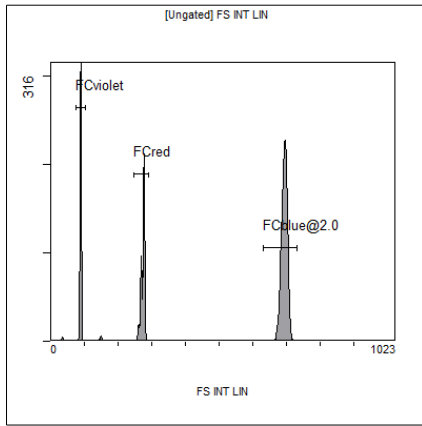
**PROGRAM INFORMATION**

File:- FlowCheck 2012-02-13 001.LMD				
Gate:- FCblue@2.0 [FCblue@2.0]				
Compensation:-				
Region	Number	X-Mean	X-HPCV	
ALL	5000	511	0.66	
ALL	5000	515	1.46	
ALL	5000	504	0.81	
ALL	5000	511	0.73	
ALL	5000	501	0.64	
FL1@2.0	4997	511	0.66	
FL2@2.0	4998	501	0.64	
FL3@2.0	4998	511	0.73	
FL4@2.0	4997	504	0.81	
FL5@2.5	4995	515	1.46	

File:- FlowCheck 2012-02-13 001.LMD				
Gate:- FCred [FCred]				
Compensation:-				
Region	Number	X-Mean	X-HPCV	
ALL	1878	472	0.70	
ALL	1878	489	1.00	
ALL	1878	477	1.02	
FL6@3.0	1852	475	0.70	
FL7@3.0	1867	492	1.00	
FL8@3.0	1865	479	1.02	

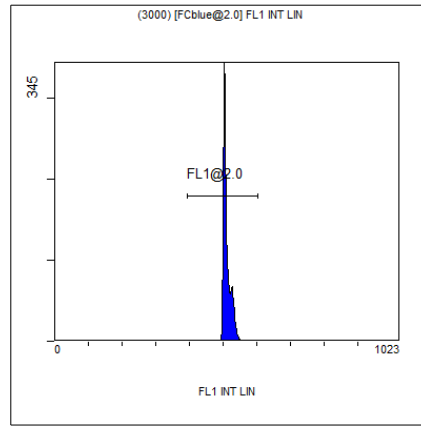
File:- FlowCheck 2012-02-13 001.LMD				
Gate:- FCviolet [FCviolet]				
Compensation:-				
Region	Number	X-Mean	X-HPCV	
ALL	1504	458	1.87	
ALL	1504	459	1.74	
FL10@4.0	1501	459	1.87	
FL9@4.0	1500	460	1.74	

File:- FlowCheck 2012-02-13 001.LMD				
Gate:- Ungated				
Compensation:-				
Region	Number	X-Mean	X-HPCV	
ALL	8854	488	0.85	
FCblue@2.0	5000	693	1.23	
FCred	1878	273	0.40	
FCviolet	1504	88.6	0.85	



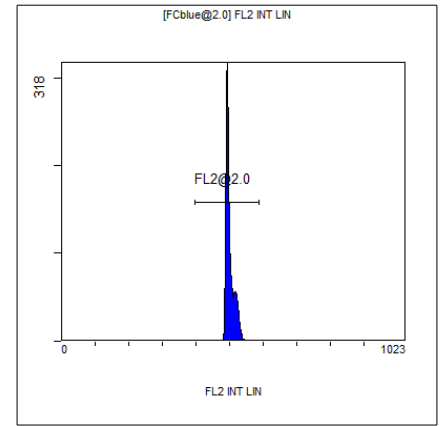
[Ungated] FS INT LIN

Region	Number	HP	X-CV	X-Mean
ALL	8854	0.85	488	
FCblue@2.0	5000	1.23	693	
FCred	1878	0.40	273	
FCviolet	1504	0.85	88.6	



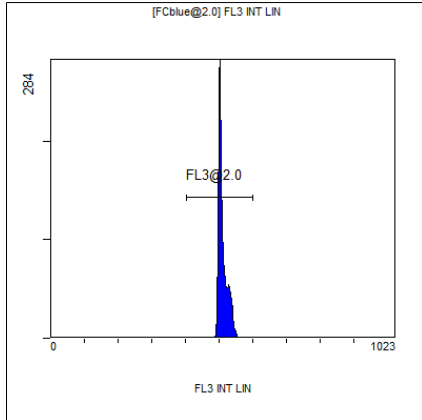
(3000) [FCblue@2.0] FL1 INT LIN

Region	Number	HP	X-CV	X-Mean
ALL	5000	0.66	511	
FL1@2.0	4997	0.66	511	



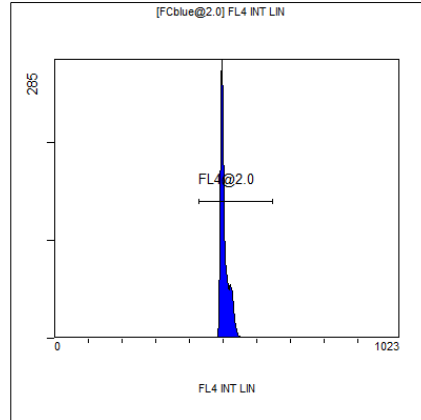
[FCblue@2.0] FL2 INT LIN

Region	Number	HP	X-CV	X-Mean
ALL	5000	0.64	501	
FL2@2.0	4998	0.64	501	



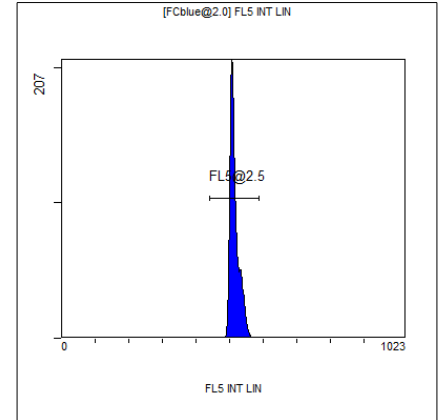
[FCblue@2.0] FL3 INT LIN

Region	Number	HP	X-CV	X-Mean
ALL	5000	0.73	511	
FL3@2.0	4998	0.73	511	



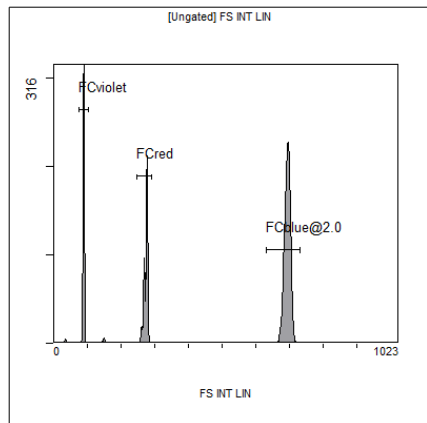
[FCblue@2.0] FL4 INT LIN

Region	Number	HP	X-CV	X-Mean
ALL	5000	0.81	504	
FL4@2.0	4997	0.81	504	



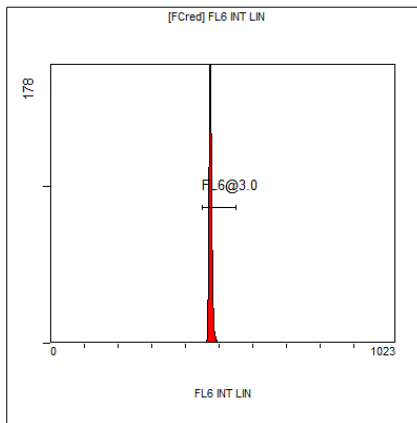
[FCblue@2.0] FL5 INT LIN

Region	Number	HP	X-CV	X-Mean
ALL	5000	1.46	515	
FL5@2.5	4995	1.46	515	



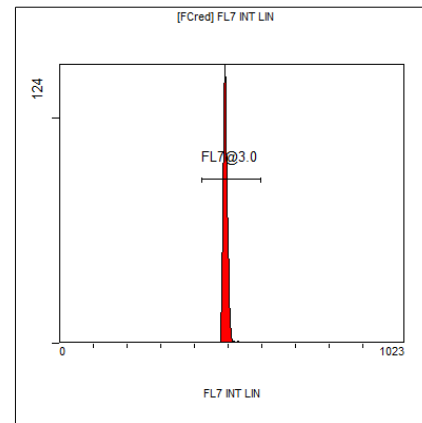
[Ungated] FS INT LIN

Region	Number	HP X-CV	X-Mean
ALL	8854	0.85	488
FCblue@2.0	5000	1.23	693
FCred	1878	0.40	273
FCviolet	1504	0.85	88.6



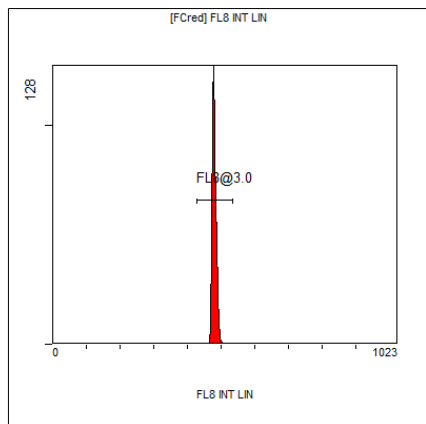
[FCred] FL6 INT LIN

Region	Number	HP X-CV	X-Mean
ALL	1878	0.70	472
FL6@3.0	1852	0.70	475



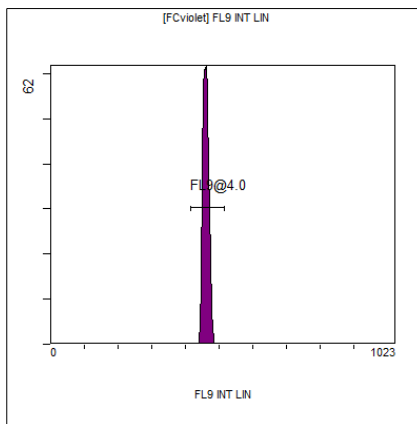
[FCred] FL7 INT LIN

Region	Number	HP X-CV	X-Mean
ALL	1878	1.00	489
FL7@3.0	1867	1.00	492



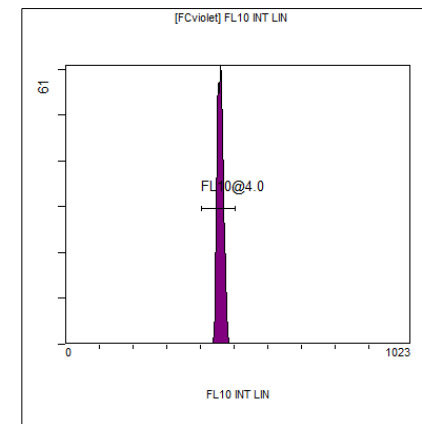
[FCred] FL8 INT LIN

Region	Number	HP X-CV	X-Mean
ALL	1878	1.02	477
FL8@3.0	1865	1.02	479



[FCviolet] FL9 INT LIN

Region	Number	HP X-CV	X-Mean
ALL	1504	1.74	459
FL9@4.0	1500	1.74	460



[FCviolet] FL10 INT LIN

Region	Number	HP X-CV	X-Mean
ALL	1504	1.87	458
FL10@4.0	1501	1.87	459