

Institution: IRB

Run Date: 27-Feb-12, 09:11:13

Protocol :Alignment Blue Red Violet\_ALIGN.pro

Sample ID: FlowCheck

Listmode Replay: Runtime Protocol

User ID: duperray

Analysis Date: 27-Feb-2012, 09:12:28

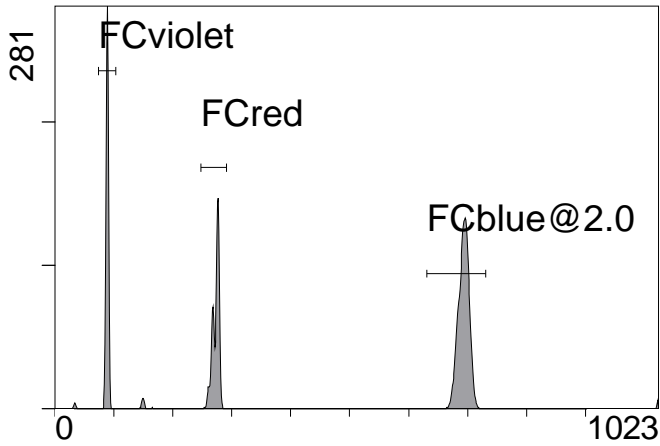
Acquisition Time/Events: 26.5s / 6231 (PROTOCOL)

Settings File: Alignment Blue Red Violet\_ALIGN.pro, 13-Feb-2012, 08:59:37

Listmode File: FlowCheck 2012-02-27 001.LMD

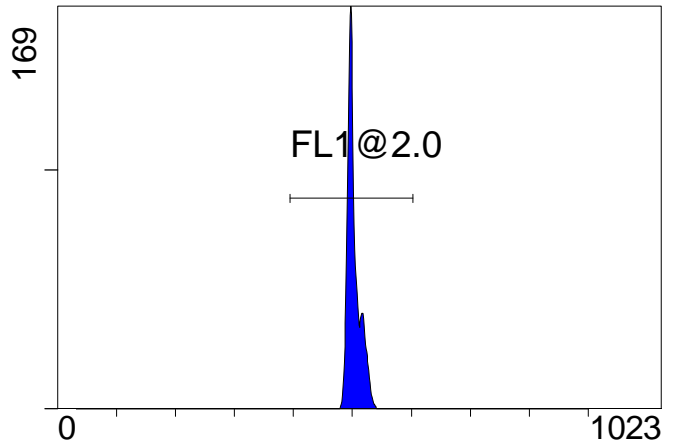
Instrument SN: AN11038 Software Version: Gallios 1.2

[Ungated] FS INT LIN



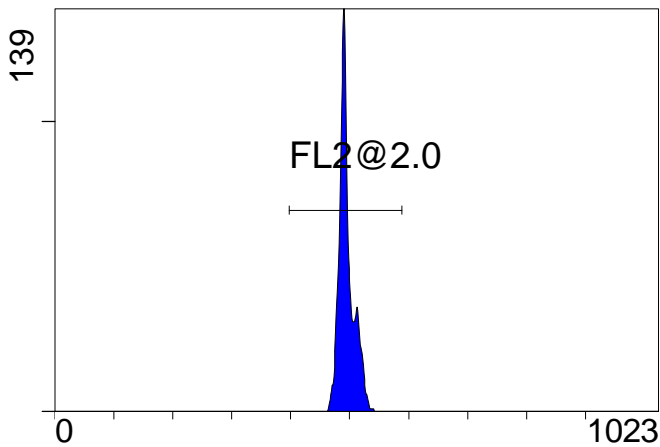
FS INT LIN

(3000) [FCblue@2.0] FL1 INT LIN



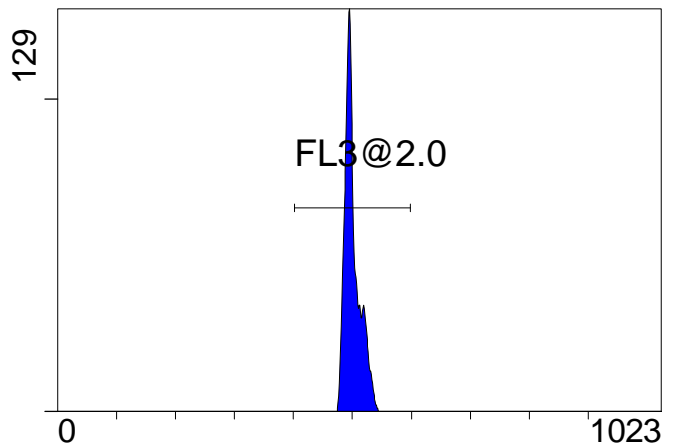
FL1 INT LIN

[FCblue@2.0] FL2 INT LIN



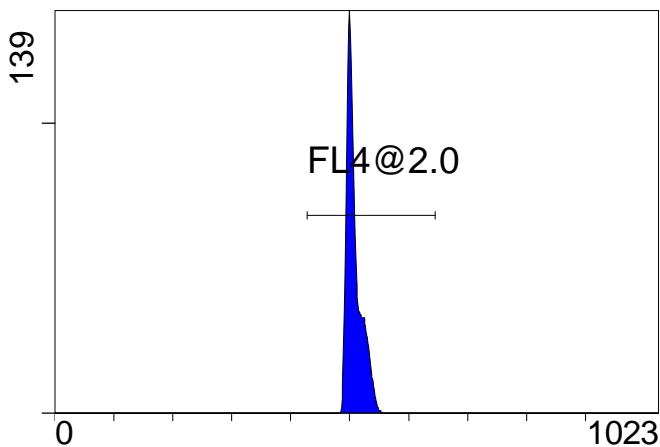
FL2 INT LIN

[FCblue@2.0] FL3 INT LIN



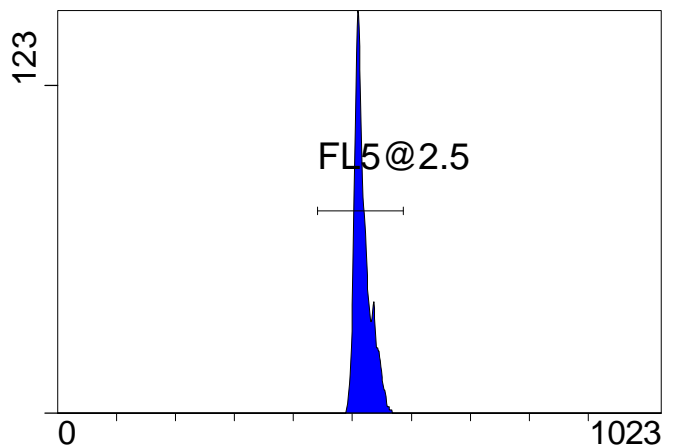
FL3 INT LIN

[FCblue@2.0] FL4 INT LIN



FL4 INT LIN

[FCblue@2.0] FL5 INT LIN



FL5 INT LIN

Institution: IRB

Protocol :Alignment Blue Red Violet\_ALIGN.pro

Listmode Replay: Runtime Protocol

Analysis Date: 27-Feb-2012, 09:12:28

Settings File: Alignment Blue Red Violet\_ALIGN.pro, 13-Feb-2012, 08:59:37

Listmode File: FlowCheck 2012-02-27 001.LMD

Run Date: 27-Feb-12, 09:11:13

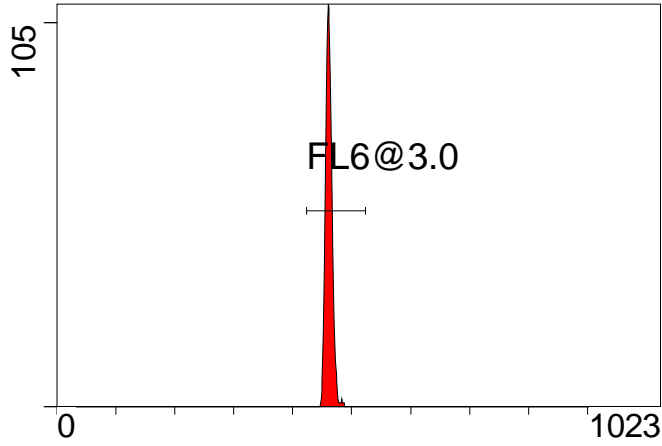
Sample ID: FlowCheck

User ID: duperray

Acquisition Time/Events: 26.5s / 6231 (PROTOCOL)

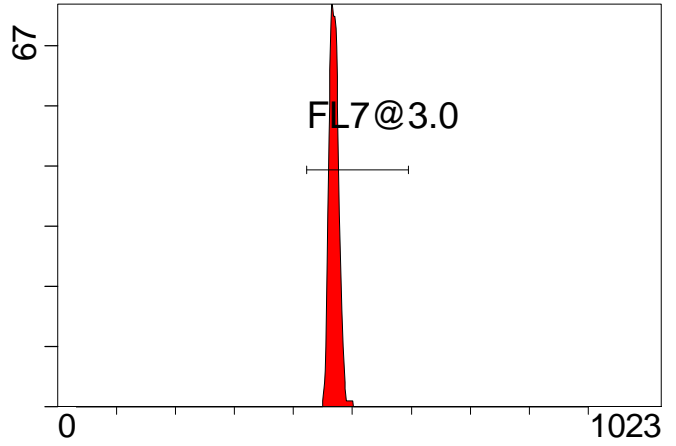
Instrument SN: AN11038 Software Version: Gallios 1.2

[FCred] FL6 INT LIN



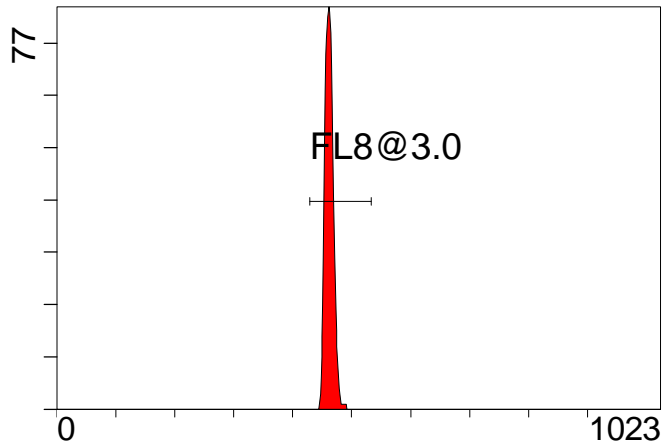
FL6 INT LIN

[FCred] FL7 INT LIN



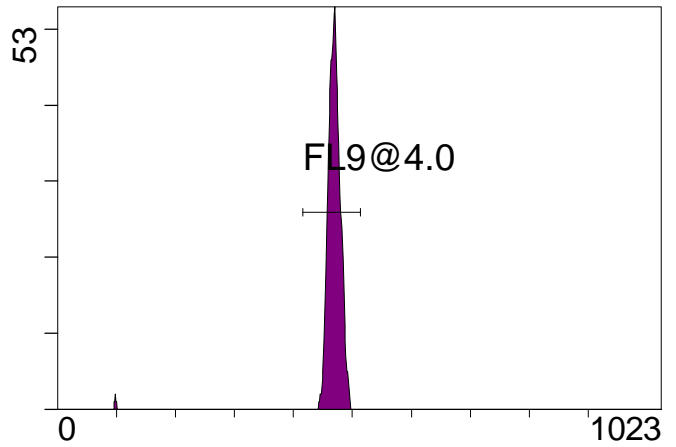
FL7 INT LIN

[FCred] FL8 INT LIN



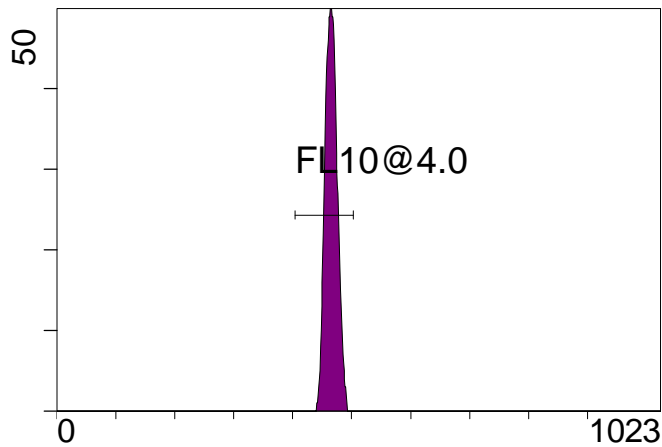
FL8 INT LIN

[FCviolet] FL9 INT LIN



FL9 INT LIN

[FCviolet] FL10 INT LIN



FL10 INT LIN

**Statistical Analysis**

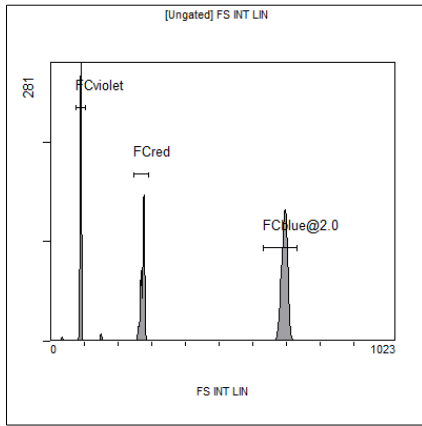
**PROGRAM INFORMATION**

File:- FlowCheck 2012-02-27 001.LMD				
Gate:- FCblue@2.0 [FCblue@2.0]				
Compensation:-				
Region	Number	X-Mean	X-HPCV	
ALL	3000	503	0.86	
ALL	3000	518	1.24	
ALL	3000	508	1.08	
ALL	3000	501	1.01	
ALL	3000	495	0.98	
FL1@2.0	2997	503	0.86	
FL2@2.0	2997	495	0.98	
FL3@2.0	2997	501	1.01	
FL4@2.0	2997	508	1.08	
FL5@2.5	2997	518	1.24	

File:- FlowCheck 2012-02-27 001.LMD				
Gate:- FCred [FCred]				
Compensation:-				
Region	Number	X-Mean	X-HPCV	
ALL	1472	459	1.10	
ALL	1472	467	1.62	
ALL	1472	460	1.41	
FL6@3.0	1463	462	1.10	
FL7@3.0	1463	469	1.62	
FL8@3.0	1460	462	1.41	

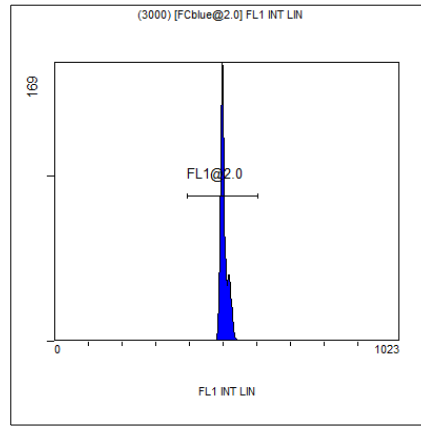
File:- FlowCheck 2012-02-27 001.LMD				
Gate:- FCviolet [FCviolet]				
Compensation:-				
Region	Number	X-Mean	X-HPCV	
ALL	1395	464	2.25	
ALL	1395	460	1.80	
FL10@4.0	1383	466	2.25	
FL9@4.0	1358	470	1.80	

File:- FlowCheck 2012-02-27 001.LMD				
Gate:- Ungated				
Compensation:-				
Region	Number	X-Mean	X-HPCV	
ALL	6231	437	1.09	
FCblue@2.0	3000	693	1.08	
FCred	1472	273	0.53	
FCviolet	1395	88.7	1.09	



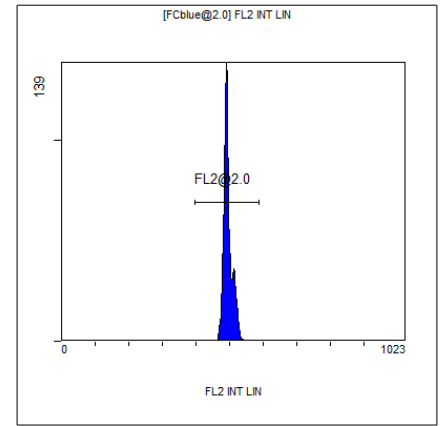
[Ungated] FS INT LIN

Region	Number	HP	X-CV	X-Mean
ALL	6231	1.09		437
FCblue@2.0	3000	1.08		693
FCred	1472	0.53		273
FCviolet	1395	1.09		88.7



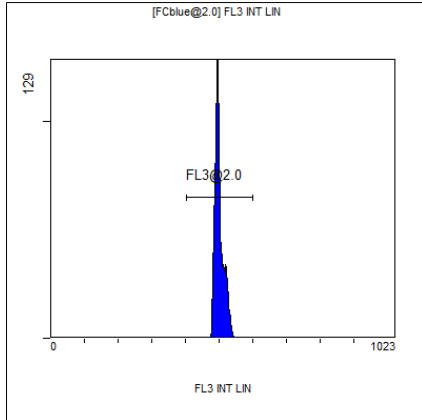
(3000) [FCblue@2.0] FL1 INT LIN

Region	Number	HP	X-CV	X-Mean
ALL	3000	0.86		503
FL1@2.0	2997	0.86		503



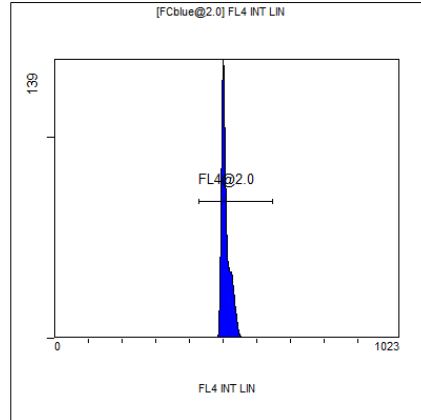
[FCblue@2.0] FL2 INT LIN

Region	Number	HP	X-CV	X-Mean
ALL	3000	0.98		495
FL2@2.0	2997	0.98		495



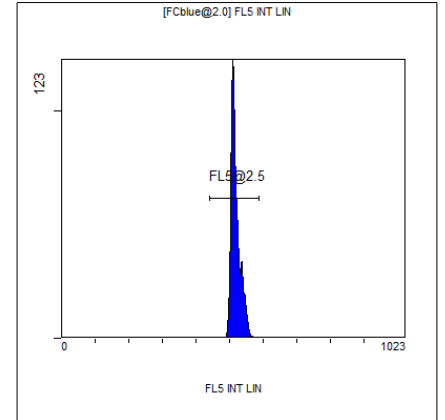
[FCblue@2.0] FL3 INT LIN

Region	Number	HP	X-CV	X-Mean
ALL	3000	1.01		501
FL3@2.0	2997	1.01		501



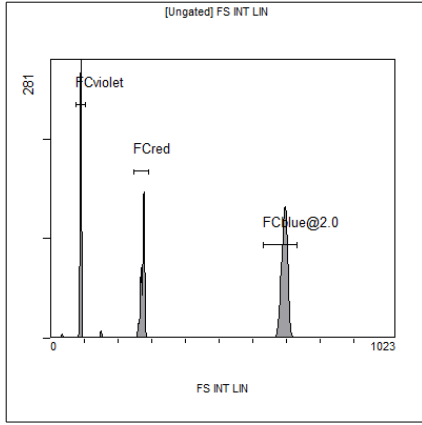
[FCblue@2.0] FL4 INT LIN

Region	Number	HP	X-CV	X-Mean
ALL	3000	1.08		508
FL4@2.0	2997	1.08		508



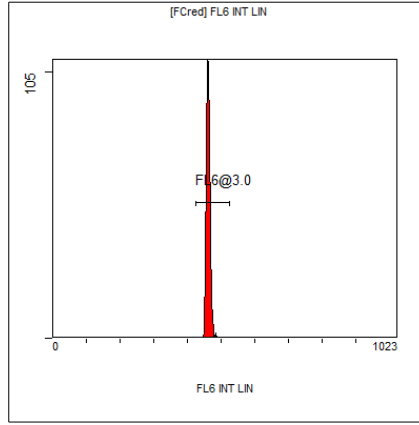
[FCblue@2.0] FL5 INT LIN

Region	Number	HP	X-CV	X-Mean
ALL	3000	1.24		518
FL5@2.5	2997	1.24		518



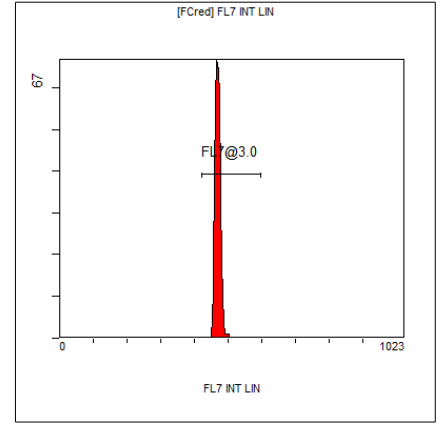
[Ungated] FS INT LIN

Region	Number	HP X-CV	X-Mean
ALL	6231	1.09	437
FCblue@2.0	3000	1.08	693
FCred	1472	0.53	273
FCviolet	1395	1.09	88.7



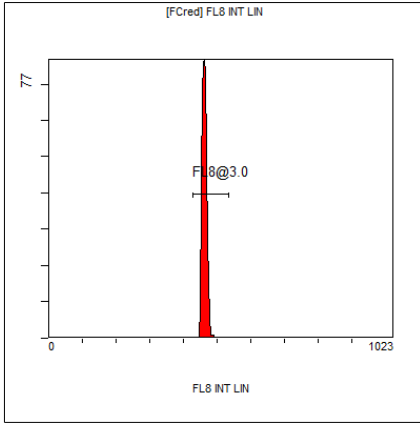
[FCred] FL6 INT LIN

Region	Number	HP X-CV	X-Mean
ALL	1472	1.10	459
FL6@3.0	1463	1.10	462



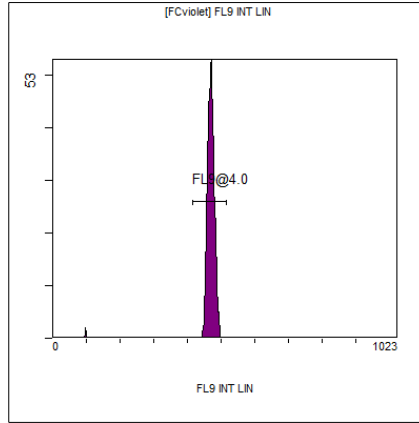
[FCred] FL7 INT LIN

Region	Number	HP X-CV	X-Mean
ALL	1472	1.62	467
FL7@3.0	1463	1.62	469



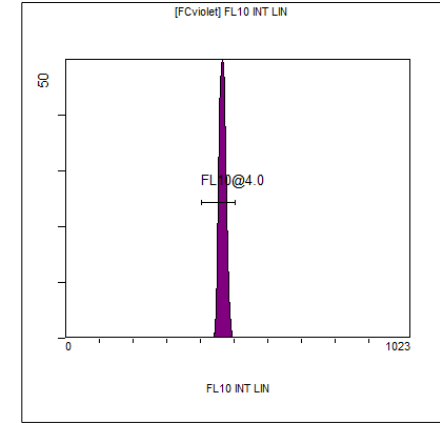
[FCred] FL8 INT LIN

Region	Number	HP X-CV	X-Mean
ALL	1472	1.41	460
FL8@3.0	1460	1.41	462



[FCviolet] FL9 INT LIN

Region	Number	HP X-CV	X-Mean
ALL	1395	1.80	460
FL9@4.0	1358	1.80	470



[FCviolet] FL10 INT LIN

Region	Number	HP X-CV	X-Mean
ALL	1395	2.25	464
FL10@4.0	1383	2.25	466