

Institution: IRB

Protocol :Alignment Blue Red Violet_ALIGN.pro

Runtime Results

Analysis Date: 12-Mar-2012, 09:16:58

Settings File: Alignment Blue Red Violet_ALIGN.pro, 13-Feb-2012, 08:59:37

Listmode File: FlowCheck 2012-03-12 001.LMD

Run Date: 12-Mar-12, 09:16:02

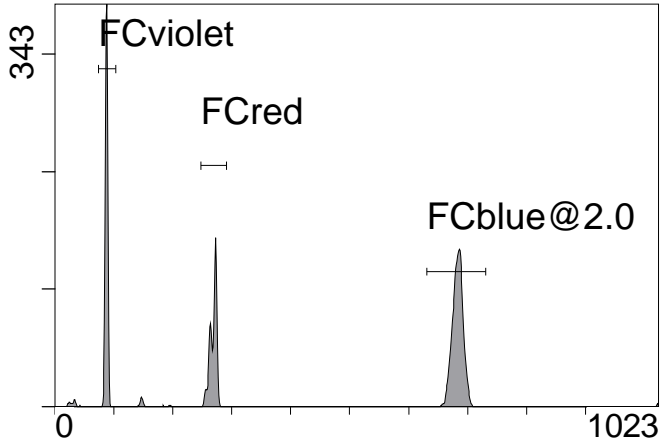
Sample ID: FlowCheck

User ID: duperray

Acquisition Time/Events: 31.0s / 6757 (PROTOCOL)

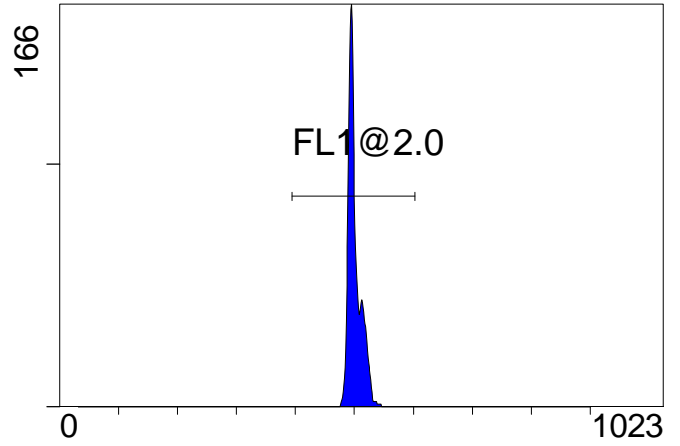
Instrument SN: AN11038 Software Version: Gallios 1.2

[Ungated] FS INT LIN



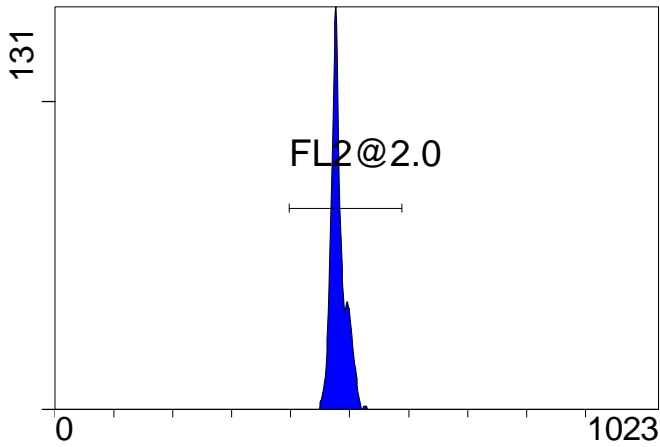
FS INT LIN

(3000) [FCblue@2.0] FL1 INT LIN



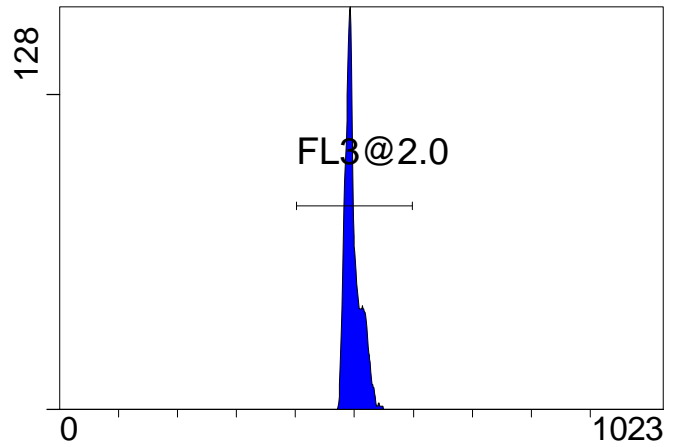
FL1 INT LIN

[FCblue@2.0] FL2 INT LIN



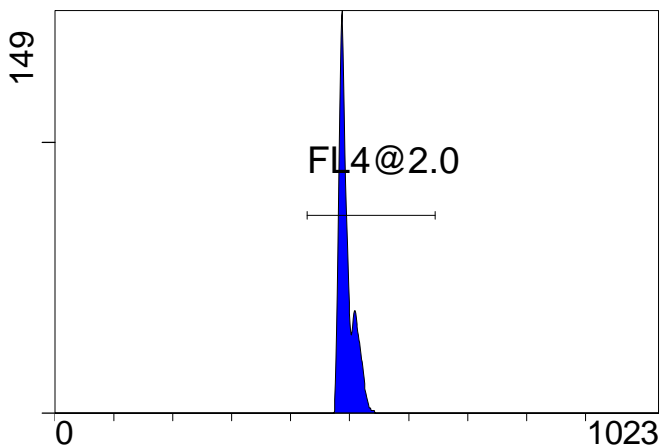
FL2 INT LIN

[FCblue@2.0] FL3 INT LIN



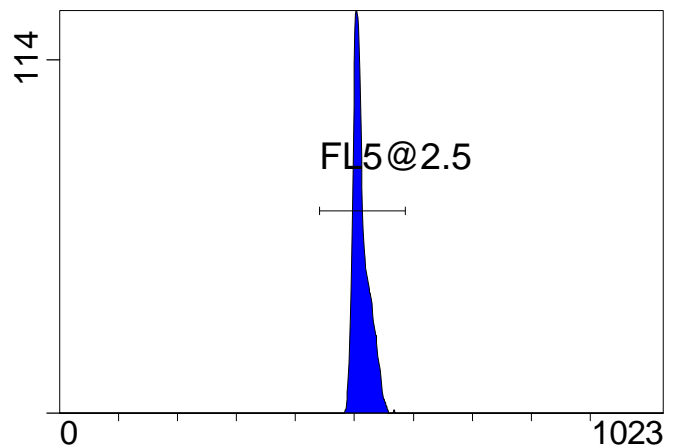
FL3 INT LIN

[FCblue@2.0] FL4 INT LIN



FL4 INT LIN

[FCblue@2.0] FL5 INT LIN



FL5 INT LIN

Institution: IRB

Protocol :Alignment Blue Red Violet_ALIGN.pro

Runtime Results

Analysis Date: 12-Mar-2012, 09:16:59

Settings File: Alignment Blue Red Violet_ALIGN.pro, 13-Feb-2012, 08:59:37

Listmode File: FlowCheck 2012-03-12 001.LMD

Run Date: 12-Mar-12, 09:16:02

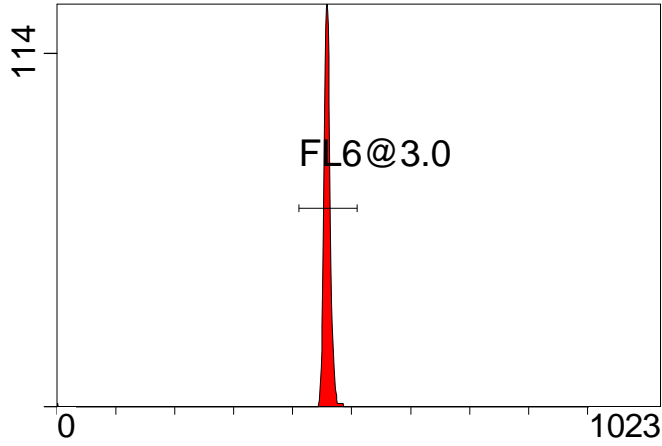
Sample ID: FlowCheck

User ID: duperray

Acquisition Time/Events: 31.0s / 6757 (PROTOCOL)

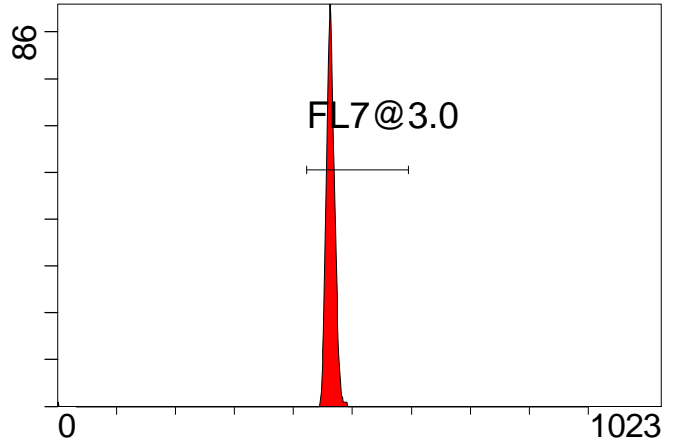
Instrument SN: AN11038 Software Version: Gallios 1.2

[FCred] FL6 INT LIN



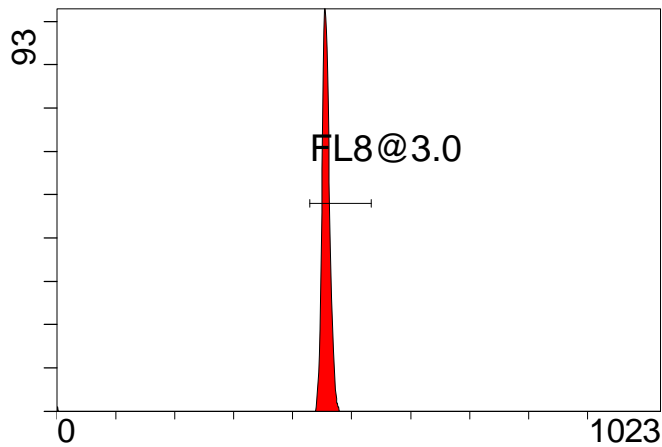
FL6 INT LIN

[FCred] FL7 INT LIN



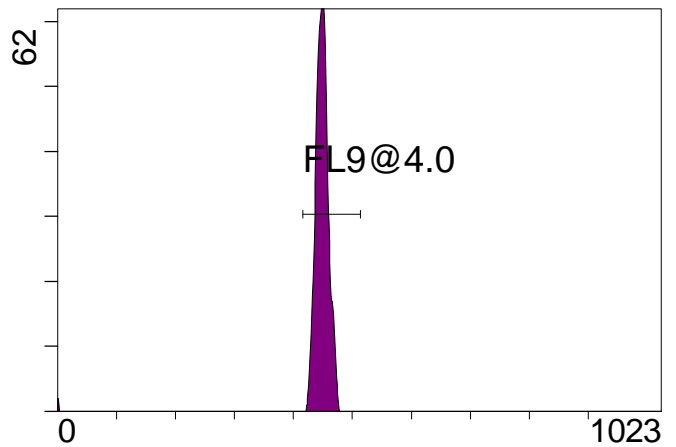
FL7 INT LIN

[FCred] FL8 INT LIN



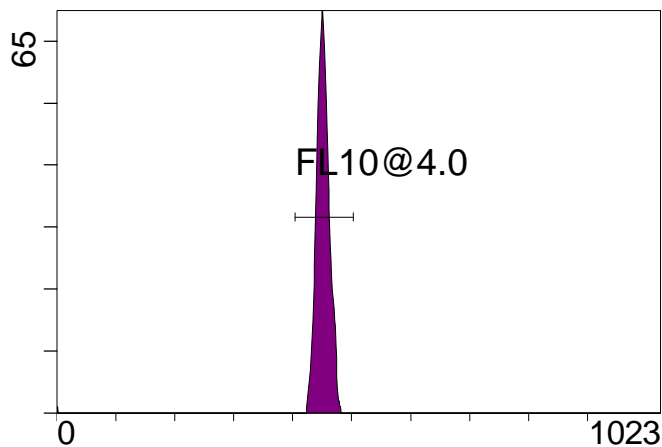
FL8 INT LIN

[FCviolet] FL9 INT LIN



FL9 INT LIN

[FCviolet] FL10 INT LIN



FL10 INT LIN