

Institution: IRB

Protocol :Alignment Blue Red Violet\_ALIGN.pro

Listmode Replay: Runtime Protocol

Analysis Date: 02-Apr-2012, 09:38:41

Settings File: Alignment Blue Red Violet\_ALIGN.pro, 13-Feb-2012, 09:59:37

Listmode File: FlowCheck 2012-04-02 001.LMD

Run Date: 02-Apr-12, 09:37:33

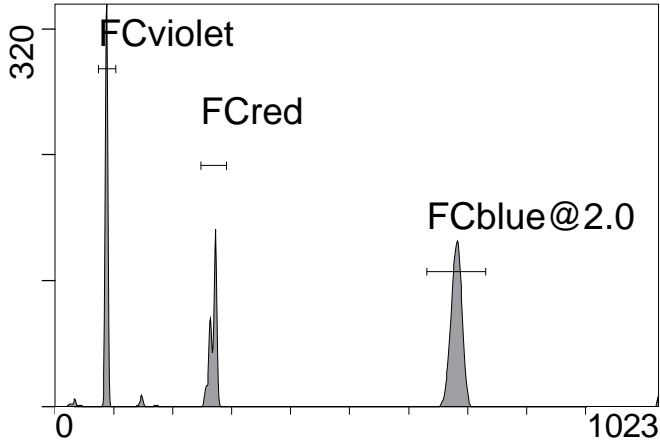
Sample ID: FlowCheck

User ID: duperray

Acquisition Time/Events: 24.5s / 6550 (PROTOCOL)

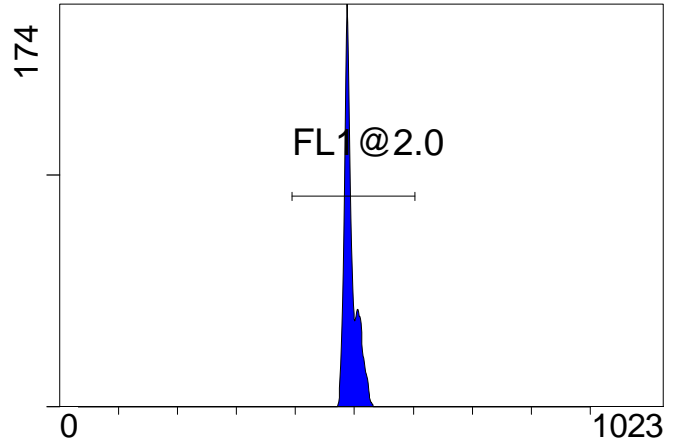
Instrument SN: AN11038 Software Version: Gallios 1.2

[Ungated] FS INT LIN



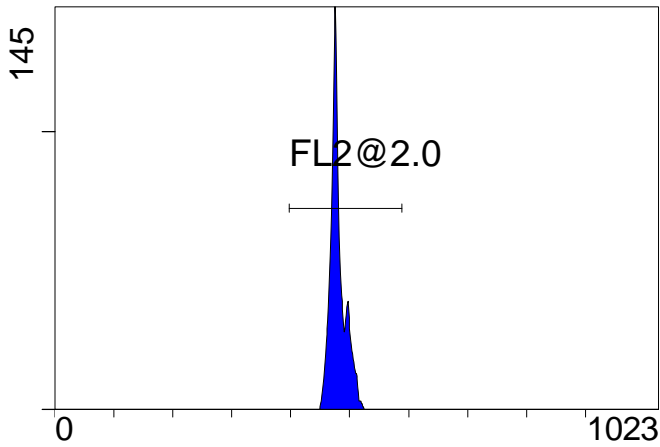
FS INT LIN

(3000) [FCblue@2.0] FL1 INT LIN



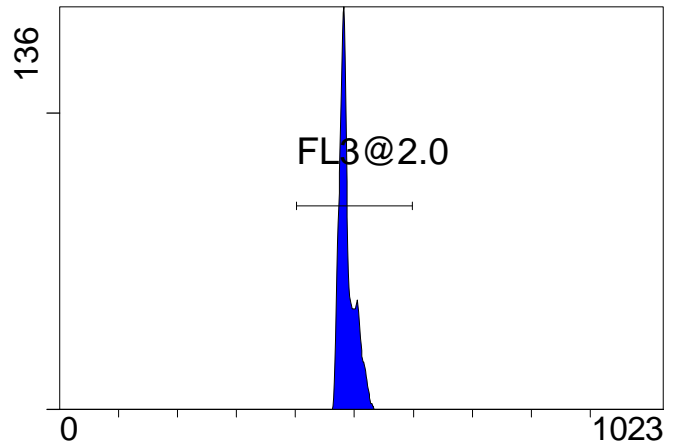
FL1 INT LIN

[FCblue@2.0] FL2 INT LIN



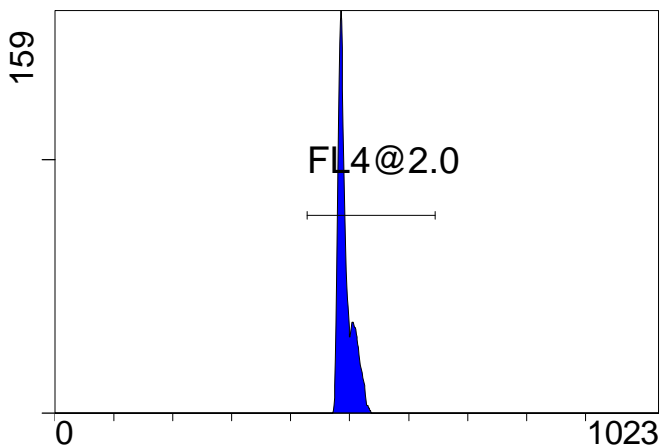
FL2 INT LIN

[FCblue@2.0] FL3 INT LIN



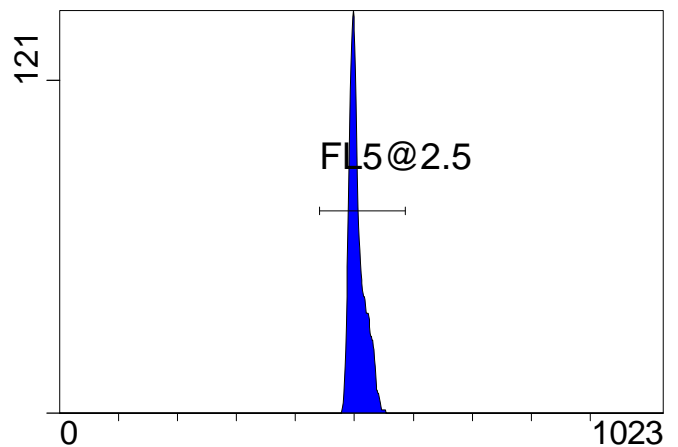
FL3 INT LIN

[FCblue@2.0] FL4 INT LIN



FL4 INT LIN

[FCblue@2.0] FL5 INT LIN



FL5 INT LIN

Institution: IRB

Protocol :Alignment Blue Red Violet\_ALIGN.pro

Listmode Replay: Runtime Protocol

Analysis Date: 02-Apr-2012, 09:38:41

Settings File: Alignment Blue Red Violet\_ALIGN.pro, 13-Feb-2012, 09:59:37

Listmode File: FlowCheck 2012-04-02 001.LMD

Run Date: 02-Apr-12, 09:37:33

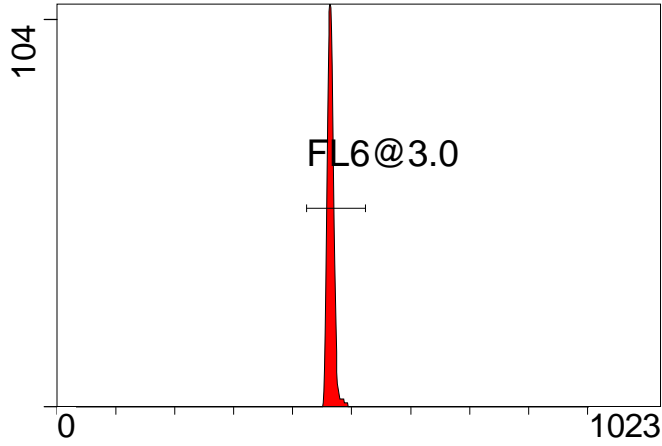
Sample ID: FlowCheck

User ID: duperray

Acquisition Time/Events: 24.5s / 6550 (PROTOCOL)

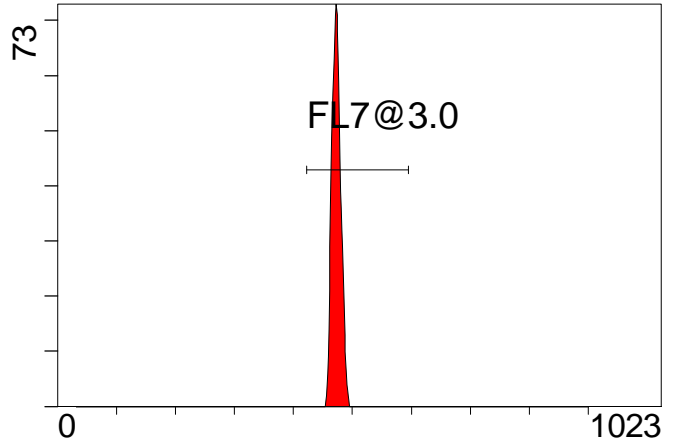
Instrument SN: AN11038 Software Version: Gallios 1.2

[FCred] FL6 INT LIN



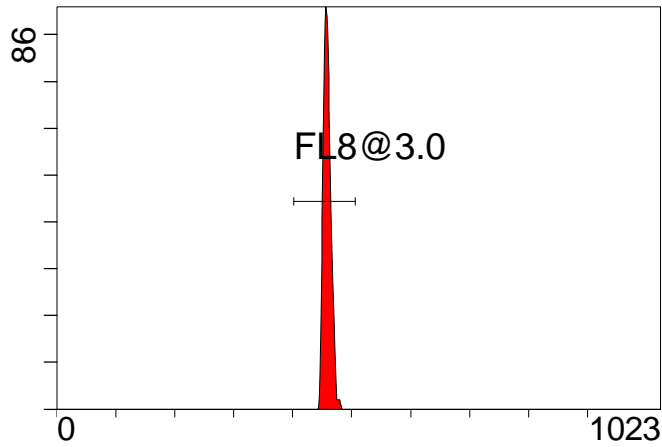
FL6 INT LIN

[FCred] FL7 INT LIN



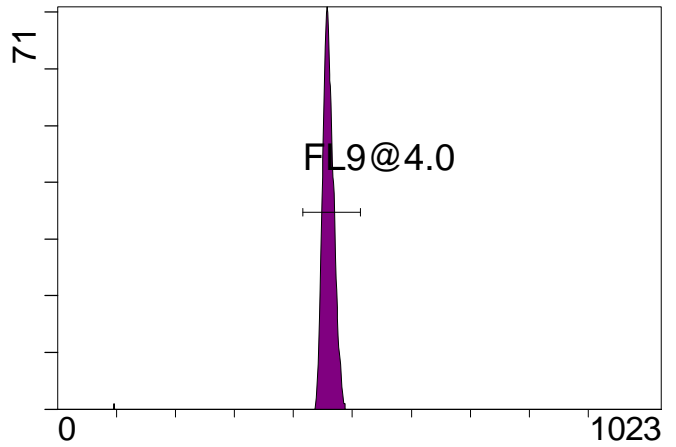
FL7 INT LIN

[FCred] FL8 INT LIN



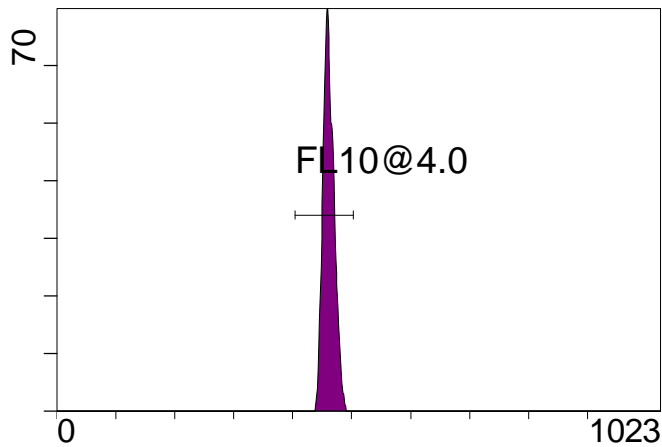
FL8 INT LIN

[FCviolet] FL9 INT LIN



FL9 INT LIN

[FCviolet] FL10 INT LIN



FL10 INT LIN

**Statistical Analysis**

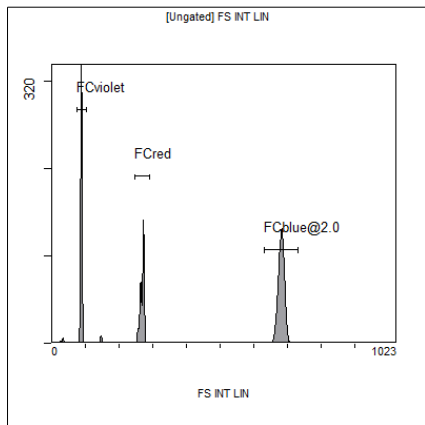
**PROGRAM INFORMATION**

File:- FlowCheck 2012-04-02 001.LMD				
Gate:- FCblue@2.0 [FCblue@2.0]				
Compensation:-				
Region	Number	X-Mean	X-HPCV	
ALL	3000	494	0.85	
ALL	3000	505	1.17	
ALL	3000	493	1.02	
ALL	3000	488	1.04	
ALL	3000	480	0.86	
FL1@2.0	2999	494	0.85	
FL2@2.0	2999	480	0.86	
FL3@2.0	2999	488	1.04	
FL4@2.0	2999	493	1.02	
FL5@2.5	2999	505	1.17	

File:- FlowCheck 2012-04-02 001.LMD				
Gate:- FCred [FCred]				
Compensation:-				
Region	Number	X-Mean	X-HPCV	
ALL	1460	458	1.30	
ALL	1460	463	1.02	
ALL	1460	472	1.42	
FL6@3.0	1457	464	1.02	
FL7@3.0	1457	473	1.42	
FL8@3.0	1457	459	1.30	

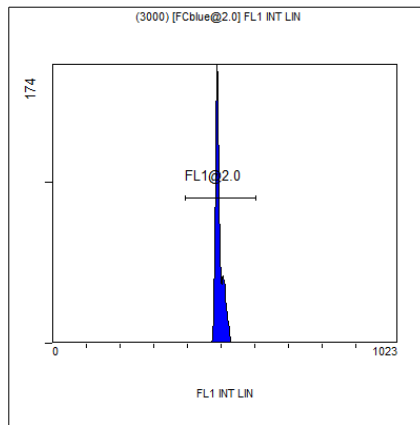
File:- FlowCheck 2012-04-02 001.LMD				
Gate:- FCviolet [FCviolet]				
Compensation:-				
Region	Number	X-Mean	X-HPCV	
ALL	1650	460	1.56	
ALL	1650	454	1.47	
FL10@4.0	1644	461	1.56	
FL9@4.0	1627	460	1.47	

File:- FlowCheck 2012-04-02 001.LMD				
Gate:- Ungated				
Compensation:-				
Region	Number	X-Mean	X-HPCV	
ALL	6550	415	1.37	
FCblue@2.0	3000	681	1.24	
FCred	1460	268	0.70	
FCviolet	1650	87.5	1.37	



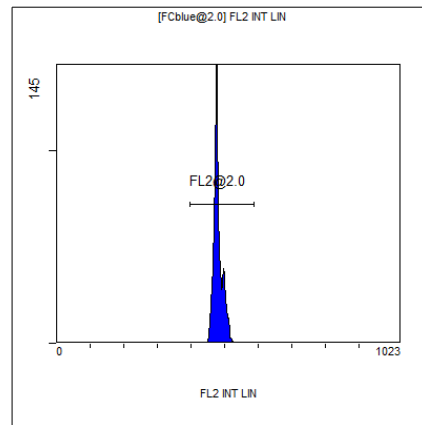
[Ungated] FS INT LIN

Region	Number	HP	X-CV	X-Mean
ALL	6550	1.37		415
FCblue@2.0	3000	1.24		681
FCred	1460	0.70		268
FCviolet	1650	1.37		87.5



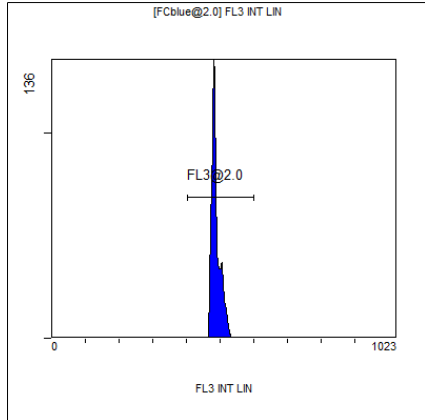
(3000) [FCblue@2.0] FL1 INT LIN

Region	Number	HP	X-CV	X-Mean
ALL	3000	0.85		494
FL1@2.0	2999	0.85		494



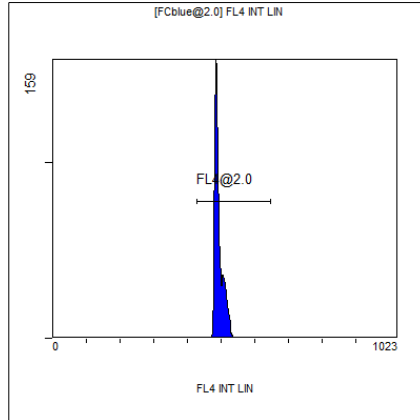
[FCblue@2.0] FL2 INT LIN

Region	Number	HP	X-CV	X-Mean
ALL	3000	0.86		480
FL2@2.0	2999	0.86		480



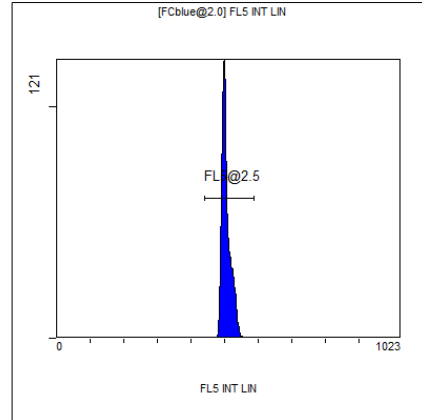
[FCblue@2.0] FL3 INT LIN

Region	Number	HP	X-CV	X-Mean
ALL	3000	1.04		488
FL3@2.0	2999	1.04		488



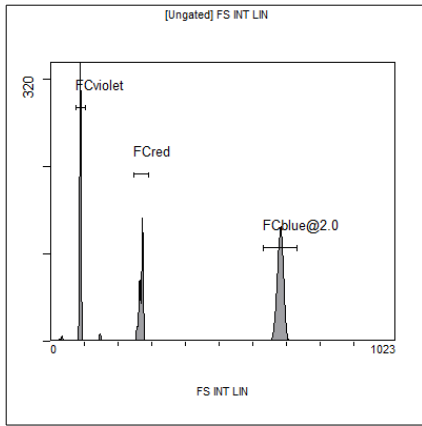
[FCblue@2.0] FL4 INT LIN

Region	Number	HP	X-CV	X-Mean
ALL	3000	1.02		493
FL4@2.0	2999	1.02		493



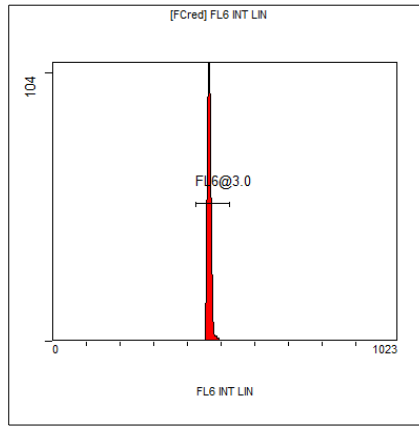
[FCblue@2.0] FL5 INT LIN

Region	Number	HP	X-CV	X-Mean
ALL	3000	1.17		505
FL5@2.5	2999	1.17		505



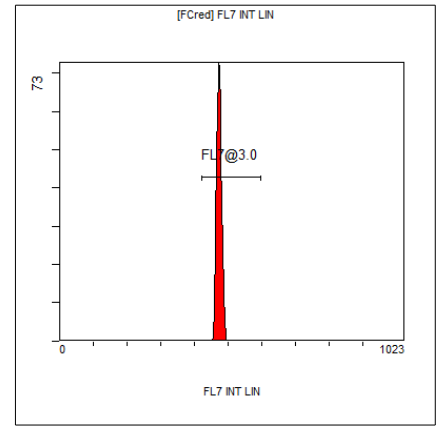
[Ungated] FS INT LIN

Region	Number	HP	X-CV	X-Mean
ALL	6550	1.37	415	
FCblue@2.0	3000	1.24	681	
FCred	1460	0.70	268	
FCviolet	1650	1.37	87.5	



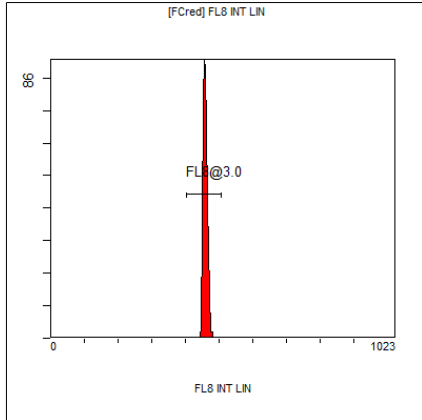
[FCred] FL6 INT LIN

Region	Number	HP	X-CV	X-Mean
ALL	1460	1.02	463	
FL6@3.0	1457	1.02	464	



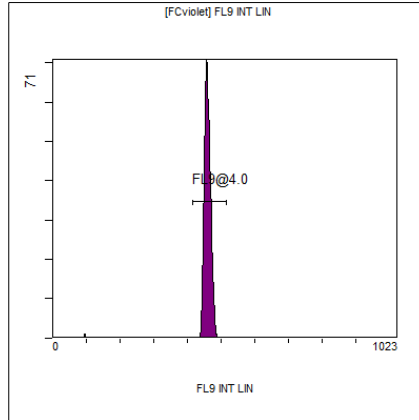
[FCred] FL7 INT LIN

Region	Number	HP	X-CV	X-Mean
ALL	1460	1.42	472	
FL7@3.0	1457	1.42	473	



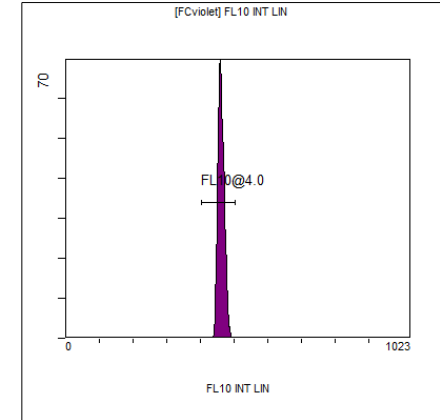
[FCred] FL8 INT LIN

Region	Number	HP	X-CV	X-Mean
ALL	1460	1.30	458	
FL8@3.0	1457	1.30	459	



[FCviolet] FL9 INT LIN

Region	Number	HP	X-CV	X-Mean
ALL	1650	1.47	454	
FL9@4.0	1627	1.47	460	



[FCviolet] FL10 INT LIN

Region	Number	HP	X-CV	X-Mean
ALL	1650	1.56	460	
FL10@4.0	1644	1.56	461	