

Institution: IRB

Run Date: 14-May-12, 09:49:14

Protocol :Alignment Blue Red Violet_ALIGN.pro

Sample ID: FlowCheck

Listmode Replay: Runtime Protocol

User ID: duperray

Analysis Date: 14-May-2012, 09:50:42

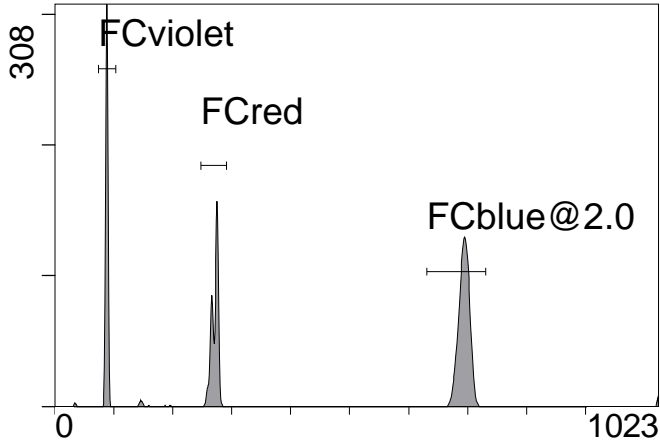
Acquisition Time/Events: 42.2s / 6462 (PROTOCOL)

Settings File: Alignment Blue Red Violet_ALIGN.pro, 13-Feb-2012, 09:59:37

Listmode File: FlowCheck 2012-05-14 001.LMD

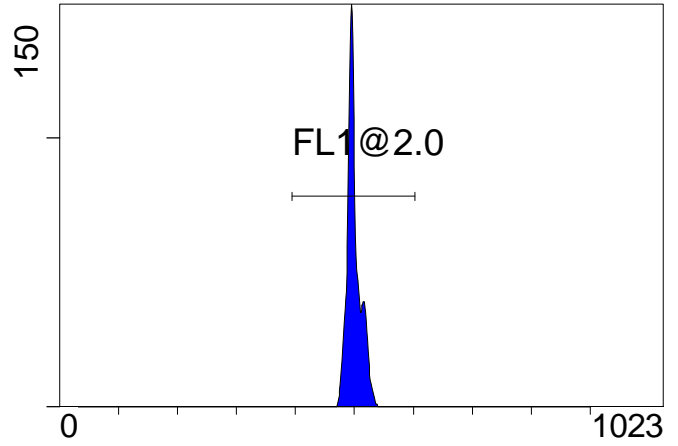
Instrument SN: AN11038 Software Version: Gallios 1.2

[Ungated] FS INT LIN



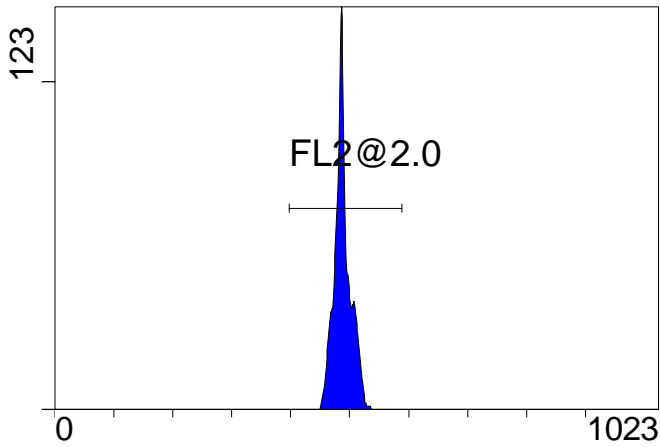
FS INT LIN

(3000) [FCblue@2.0] FL1 INT LIN



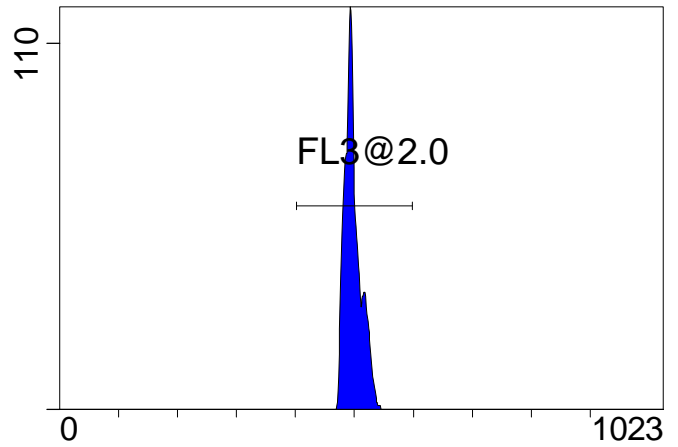
FL1 INT LIN

[FCblue@2.0] FL2 INT LIN



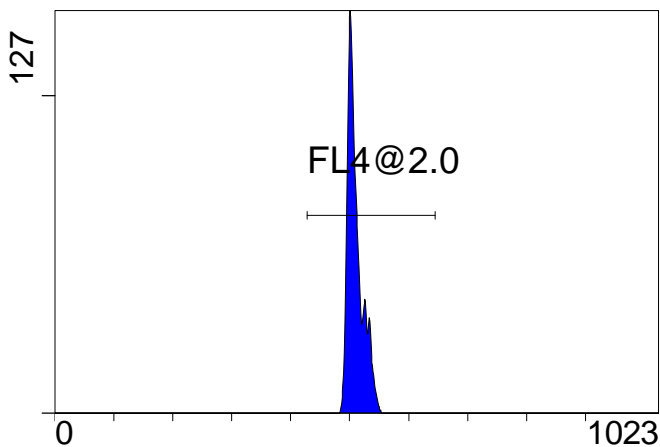
FL2 INT LIN

[FCblue@2.0] FL3 INT LIN



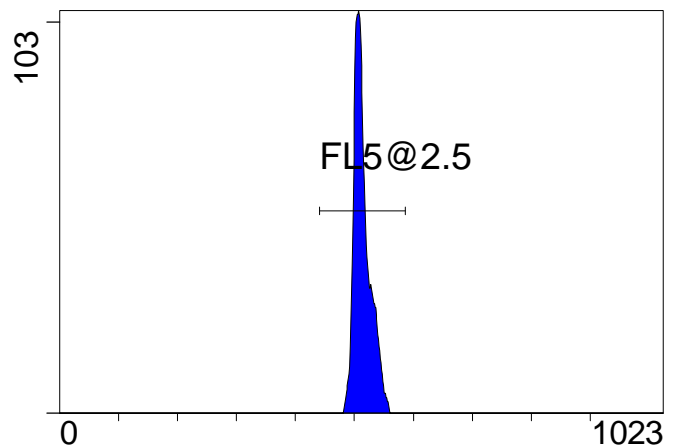
FL3 INT LIN

[FCblue@2.0] FL4 INT LIN



FL4 INT LIN

[FCblue@2.0] FL5 INT LIN



FL5 INT LIN

Institution: IRB

Protocol :Alignment Blue Red Violet_ALIGN.pro

Listmode Replay: Runtime Protocol

Analysis Date: 14-May-2012, 09:50:42

Settings File: Alignment Blue Red Violet_ALIGN.pro, 13-Feb-2012, 09:59:37

Listmode File: FlowCheck 2012-05-14 001.LMD

Run Date: 14-May-12, 09:49:14

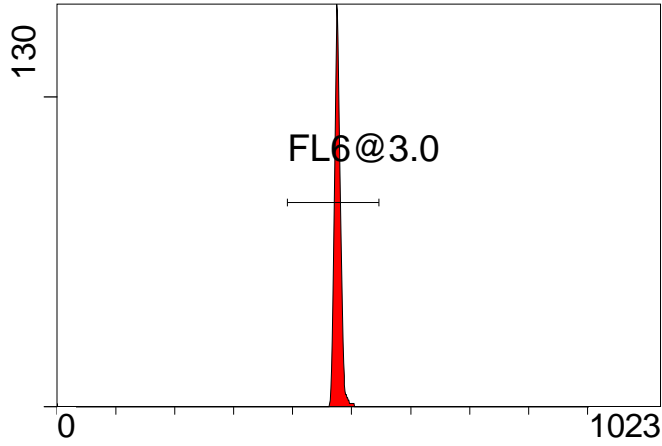
Sample ID: FlowCheck

User ID: duperray

Acquisition Time/Events: 42.2s / 6462 (PROTOCOL)

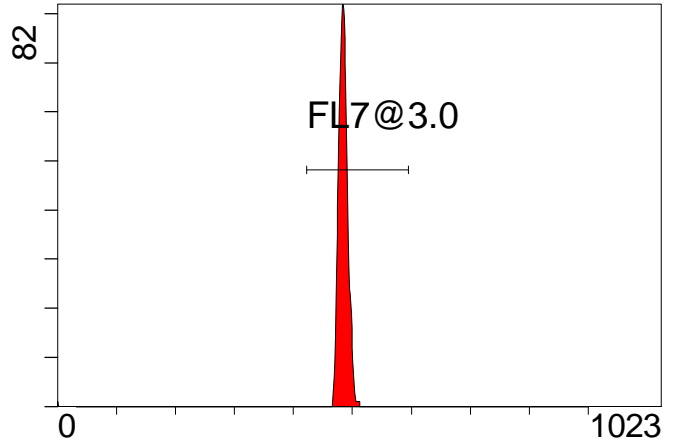
Instrument SN: AN11038 Software Version: Gallios 1.2

[FCred] FL6 INT LIN



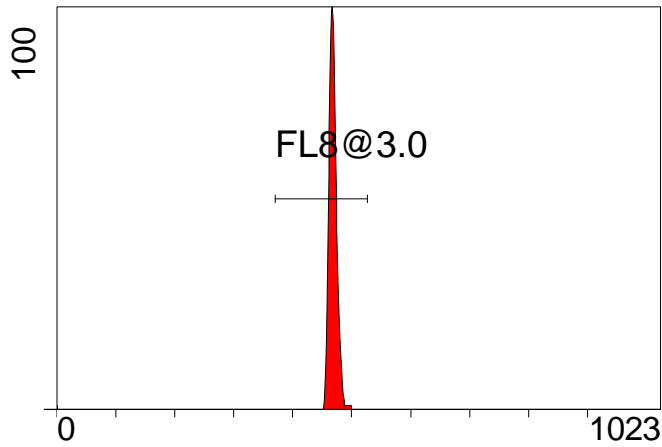
FL6 INT LIN

[FCred] FL7 INT LIN



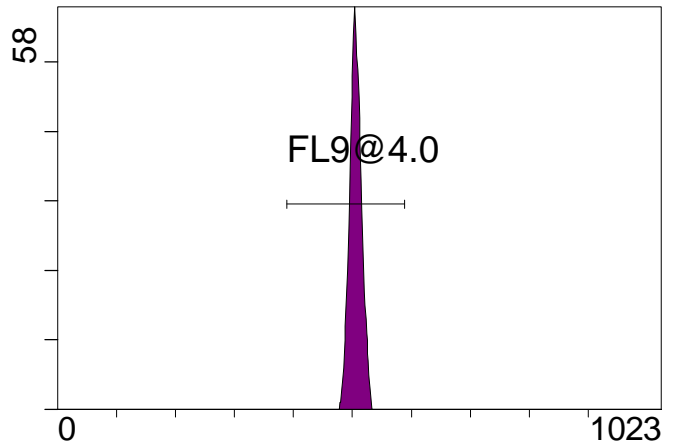
FL7 INT LIN

[FCred] FL8 INT LIN



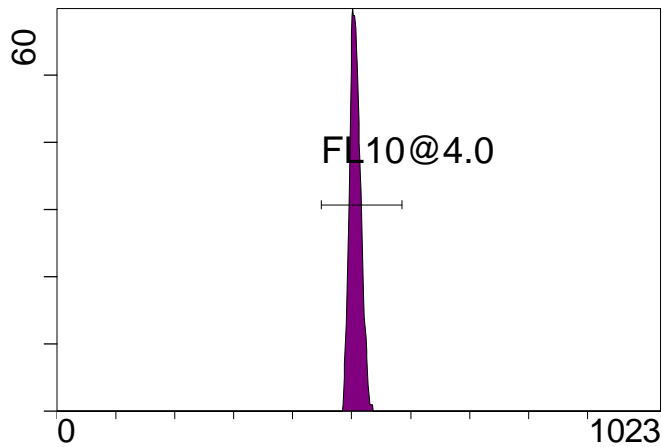
FL8 INT LIN

[FCviolet] FL9 INT LIN



FL9 INT LIN

[FCviolet] FL10 INT LIN



FL10 INT LIN

Statistical Analysis

PROGRAM INFORMATION

File:- FlowCheck 2012-05-14 001.LMD

Gate:- FCblue@2.0 [FCblue@2.0]

Compensation:-

Region	Number	X-Mean	X-HPCV
ALL	3000	499	0.90
ALL	3000	514	1.67
ALL	3000	510	1.03
ALL	3000	497	0.83
ALL	3000	488	0.78
FL1@2.0	2997	500	0.90
FL2@2.0	2997	488	0.78
FL3@2.0	2997	498	0.83
FL4@2.0	2997	510	1.03
FL5@2.5	2996	514	1.67

File:- FlowCheck 2012-05-14 001.LMD

Gate:- FCred [FCred]

Compensation:-

Region	Number	X-Mean	X-HPCV
ALL	1627	474	0.66
ALL	1627	466	1.25
ALL	1627	482	1.32
FL6@3.0	1619	476	0.66
FL7@3.0	1618	485	1.32
FL8@3.0	1619	468	1.25

File:- FlowCheck 2012-05-14 001.LMD

Gate:- FCviolet [FCviolet]

Compensation:-

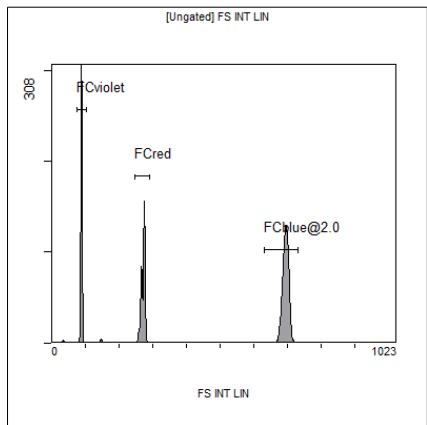
Region	Number	X-Mean	X-HPCV
ALL	1448	504	1.18
ALL	1448	505	1.81
FL10@4.0	1444	506	1.81
FL9@4.0	1444	505	1.18

File:- FlowCheck 2012-05-14 001.LMD

Gate:- Ungated

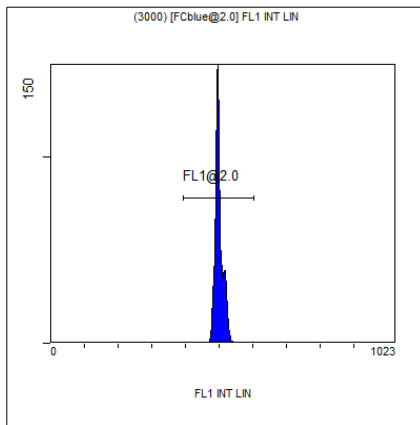
Compensation:-

Region	Number	X-Mean	X-HPCV
ALL	6462	432	0.95
FCblue@2.0	3000	694	1.19
FCred	1627	271	0.68
FCviolet	1448	88	0.95



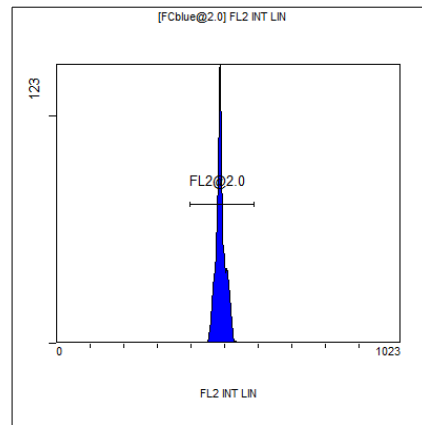
[Ungated] FS INT LIN

Region	Number	HP	X-CV	X-Mean
ALL	6462	0.95	432	
FCblue@2.0	3000	1.19	694	
FCred	1627	0.68	271	
FCviolet	1448	0.95	88	



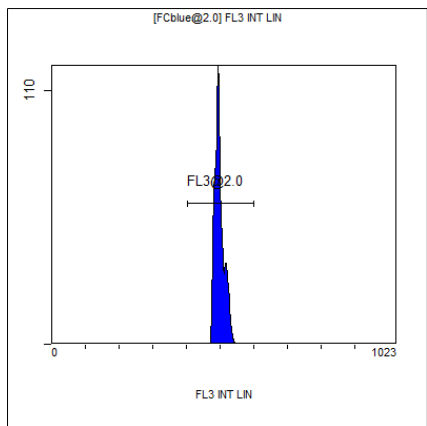
(3000) [FCblue@2.0] FL1 INT LIN

Region	Number	HP	X-CV	X-Mean
ALL	3000	0.90	499	
FL1@2.0	2997	0.90	500	



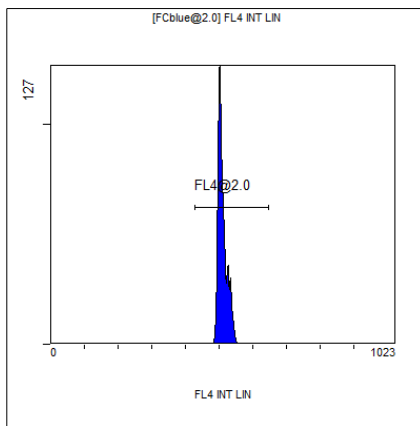
[FCblue@2.0] FL2 INT LIN

Region	Number	HP	X-CV	X-Mean
ALL	3000	0.78	488	
FL2@2.0	2997	0.78	488	



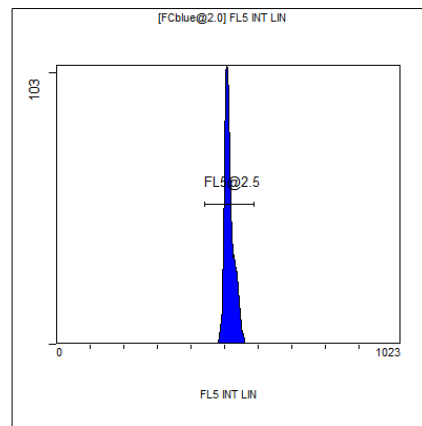
[FCblue@2.0] FL3 INT LIN

Region	Number	HP	X-CV	X-Mean
ALL	3000	0.83	497	
FL3@2.0	2997	0.83	498	



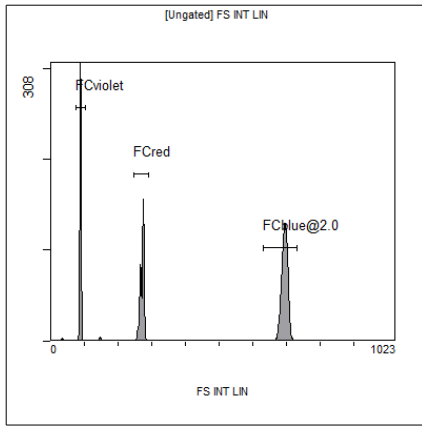
[FCblue@2.0] FL4 INT LIN

Region	Number	HP	X-CV	X-Mean
ALL	3000	1.03	510	
FL4@2.0	2997	1.03	510	



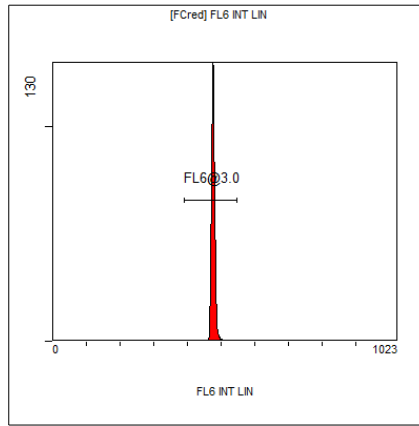
[FCblue@2.0] FL5 INT LIN

Region	Number	HP	X-CV	X-Mean
ALL	3000	1.67	514	
FL5@2.5	2996	1.67	514	



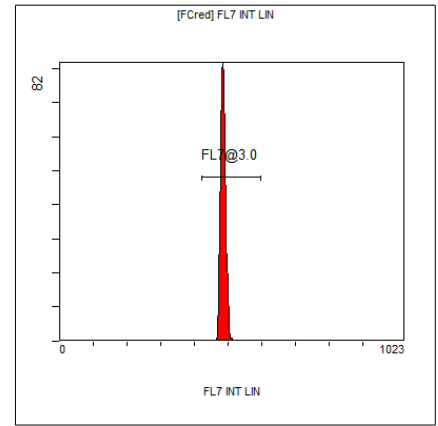
[Ungated] FS INT LIN

Region	Number	HP X-CV	X-Mean
ALL	6462	0.95	432
FCblue@2.0	3000	1.19	694
FCred	1627	0.68	271
FCviolet	1448	0.95	88



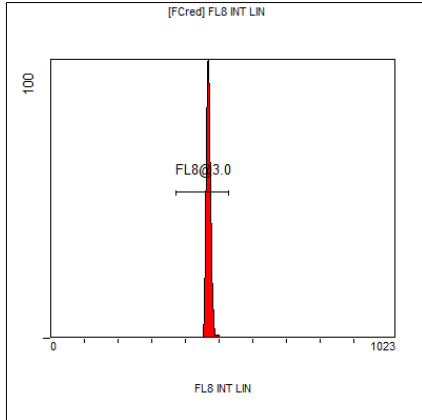
[FCred] FL6 INT LIN

Region	Number	HP X-CV	X-Mean
ALL	1627	0.66	474
FL6@3.0	1619	0.66	476



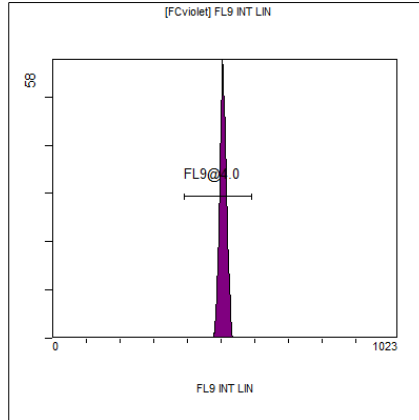
[FCred] FL7 INT LIN

Region	Number	HP X-CV	X-Mean
ALL	1627	1.32	482
FL7@3.0	1618	1.32	485



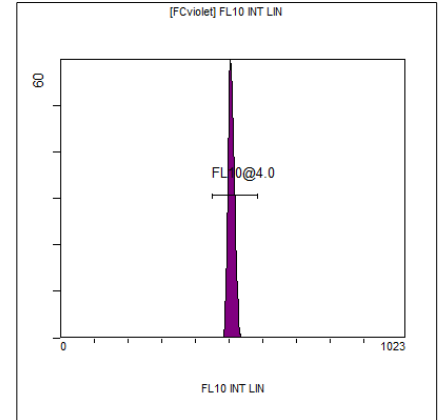
[FCred] FL8 INT LIN

Region	Number	HP X-CV	X-Mean
ALL	1627	1.25	466
FL8@3.0	1619	1.25	468



[FCviolet] FL9 INT LIN

Region	Number	HP X-CV	X-Mean
ALL	1448	1.18	504
FL9@4.0	1444	1.18	505



[FCviolet] FL10 INT LIN

Region	Number	HP X-CV	X-Mean
ALL	1448	1.81	505
FL10@4.0	1444	1.81	506