

Institution: IRB

Protocol :Alignment Blue Red Violet\_ALIGN.pro

Listmode Replay: Runtime Protocol

Analysis Date: 11-Jun-2012, 09:18:39

Settings File: Alignment Blue Red Violet\_ALIGN.pro, 11-Jun-2012, 09:17:01

Listmode File: FlowCheck 2012-06-11 001.LMD

Run Date: 11-Jun-12, 09:16:41

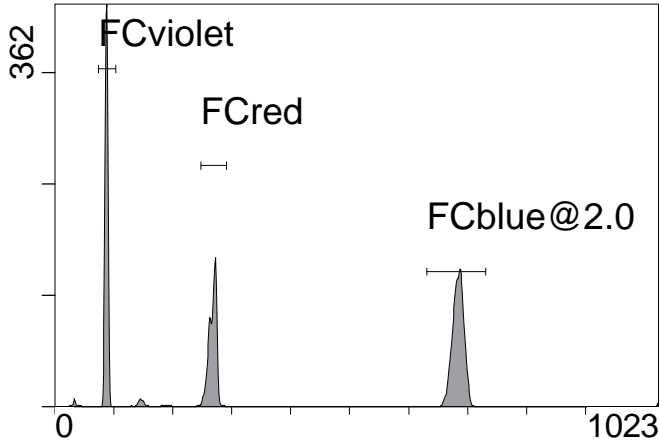
Sample ID: FlowCheck

User ID: duperray

Acquisition Time/Events: 78.3s / 7668 (PROTOCOL)

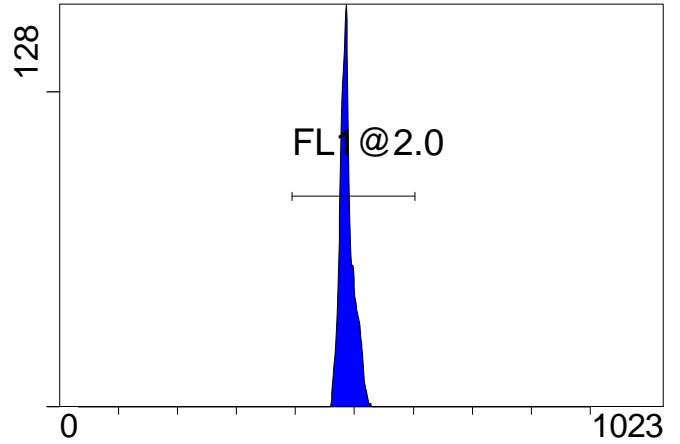
Instrument SN: AN11038 Software Version: Gallios 1.2

[Ungated] FS INT LIN



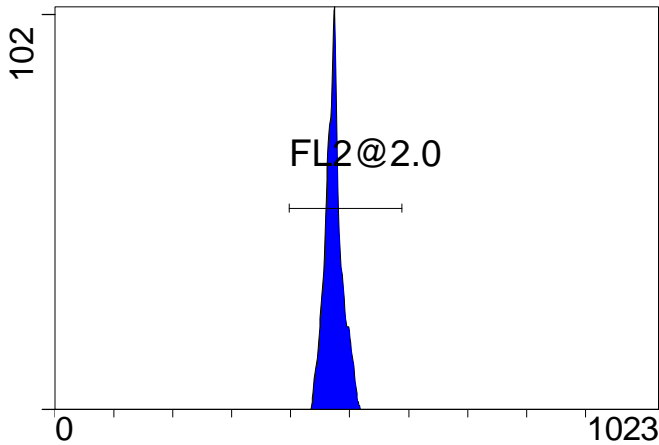
FS INT LIN

(3000) [FCblue@2.0] FL1 INT LIN



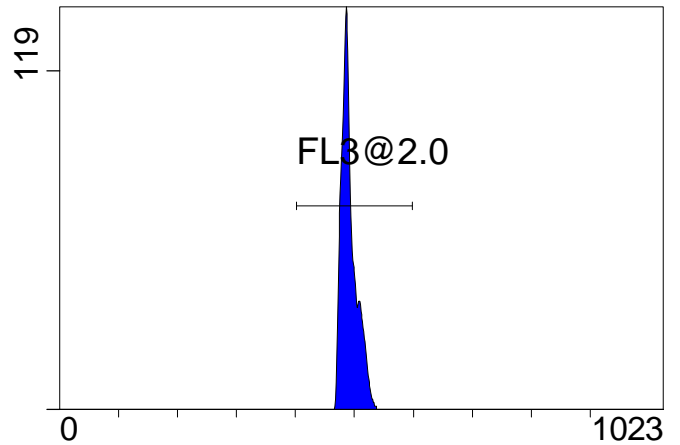
FL1 INT LIN

[FCblue@2.0] FL2 INT LIN



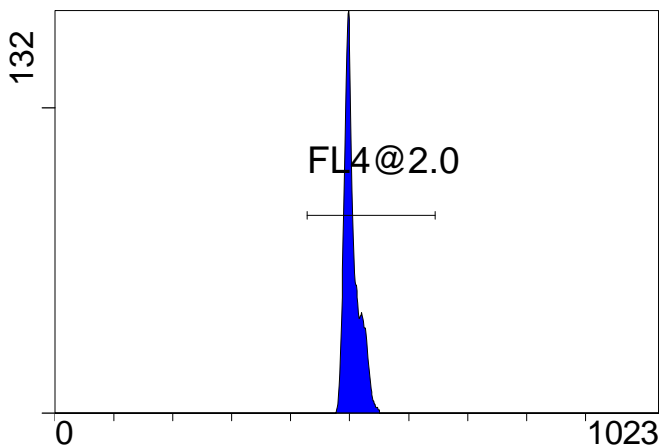
FL2 INT LIN

[FCblue@2.0] FL3 INT LIN



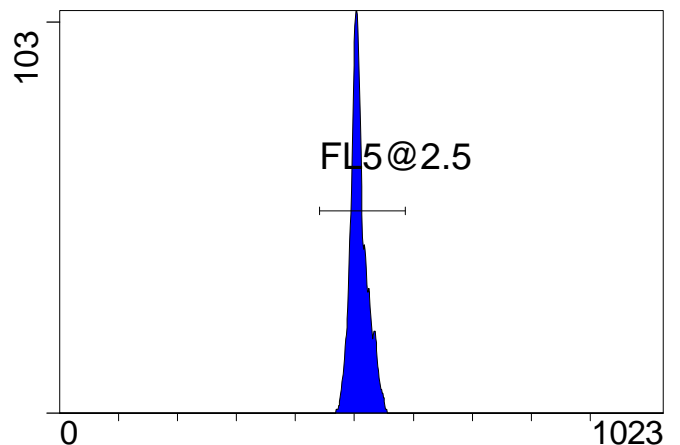
FL3 INT LIN

[FCblue@2.0] FL4 INT LIN



FL4 INT LIN

[FCblue@2.0] FL5 INT LIN



FL5 INT LIN

Institution: IRB

Protocol :Alignment Blue Red Violet\_ALIGN.pro

Listmode Replay: Runtime Protocol

Analysis Date: 11-Jun-2012, 09:18:39

Settings File: Alignment Blue Red Violet\_ALIGN.pro, 11-Jun-2012, 09:17:01

Listmode File: FlowCheck 2012-06-11 001.LMD

Run Date: 11-Jun-12, 09:16:41

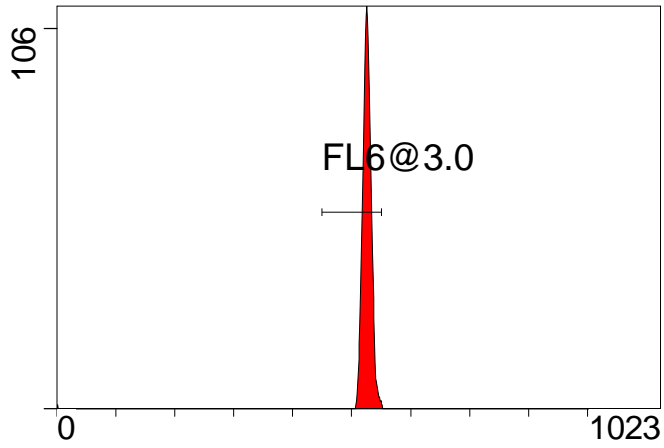
Sample ID: FlowCheck

User ID: duperray

Acquisition Time/Events: 78.3s / 7668 (PROTOCOL)

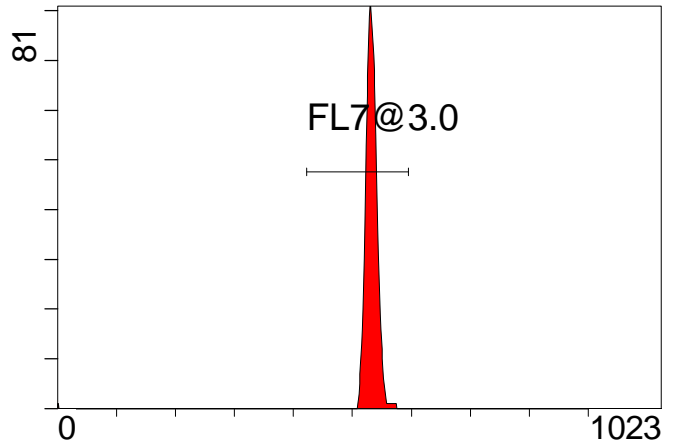
Instrument SN: AN11038 Software Version: Gallios 1.2

[FCred] FL6 INT LIN



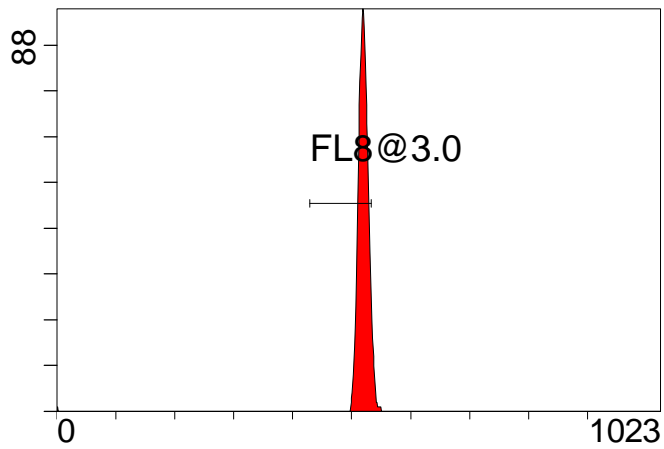
FL6 INT LIN

[FCred] FL7 INT LIN



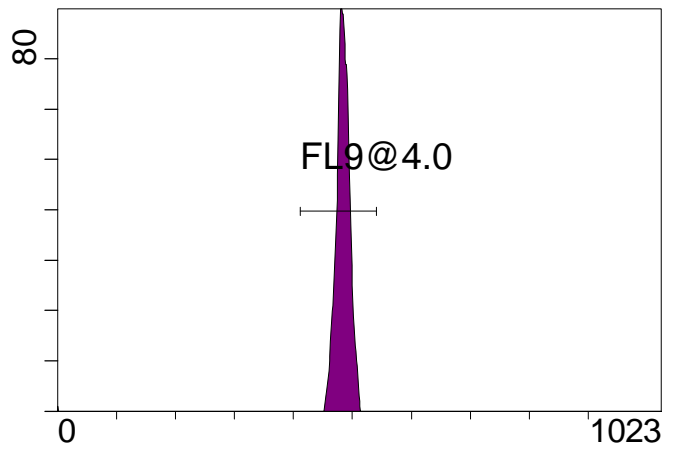
FL7 INT LIN

[FCred] FL8 INT LIN



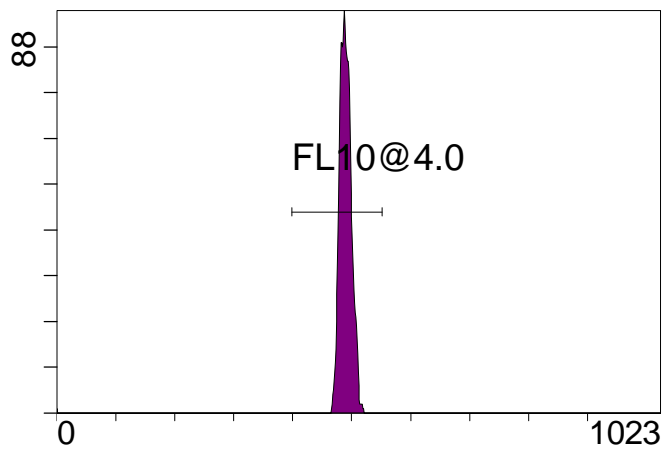
FL8 INT LIN

[FCviolet] FL9 INT LIN



FL9 INT LIN

[FCviolet] FL10 INT LIN



FL10 INT LIN

**Statistical Analysis**

**PROGRAM INFORMATION**

File:- FlowCheck 2012-06-11 001.LMD

Gate:- FCblue@2.0 [FCblue@2.0]

Compensation:-

Region	Number	X-Mean	X-HPCV
ALL	3000	488	1.25
ALL	3000	508	1.39
ALL	3000	504	1.03
ALL	3000	492	1.38
ALL	3000	473	1.47
FL1@2.0	2999	488	1.25
FL2@2.0	2999	473	1.47
FL3@2.0	2999	492	1.38
FL4@2.0	2999	504	1.03
FL5@2.5	2999	508	1.39

File:- FlowCheck 2012-06-11 001.LMD

Gate:- FCred [FCred]

Compensation:-

Region	Number	X-Mean	X-HPCV
ALL	1912	523	1.20
ALL	1912	529	1.47
ALL	1912	517	1.53
FL6@3.0	1868	526	1.20
FL7@3.0	1900	533	1.47
FL8@3.0	1758	519	1.53

File:- FlowCheck 2012-06-11 001.LMD

Gate:- FCviolet [FCviolet]

Compensation:-

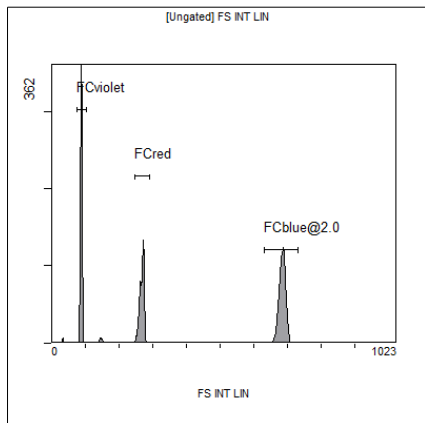
Region	Number	X-Mean	X-HPCV
ALL	2230	481	1.68
ALL	2230	488	1.63
FL10@4.0	2217	490	1.63
FL9@4.0	2213	484	1.68

File:- FlowCheck 2012-06-11 001.LMD

Gate:- Ungated

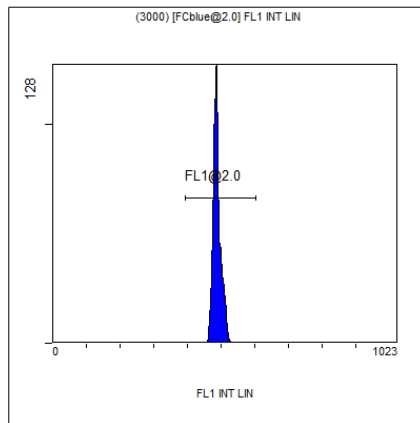
Compensation:-

Region	Number	X-Mean	X-HPCV
ALL	7668	378	2.21
FCblue@2.0	3000	684	1.05
FCred	1912	268	1.19
FCviolet	2230	87.4	2.21



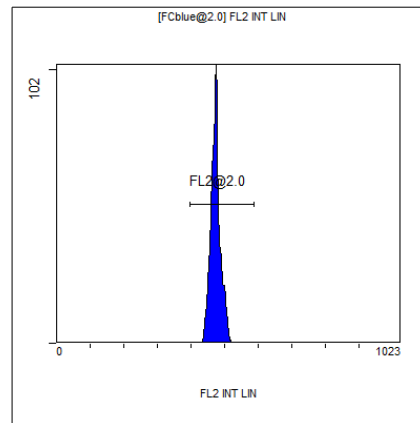
[Ungated] FS INT LIN

Region	Number	HP	X-CV	X-Mean
ALL	7668	2.21	378	
FCblue@2.0	3000	1.05	684	
FCred	1912	1.19	268	
FCviolet	2230	2.21	87.4	



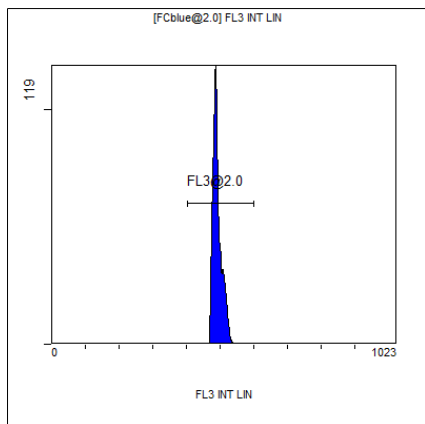
(3000) [FCblue@2.0] FL1 INT LIN

Region	Number	HP	X-CV	X-Mean
ALL	3000	1.25	488	
FL1@2.0	2999	1.25	488	



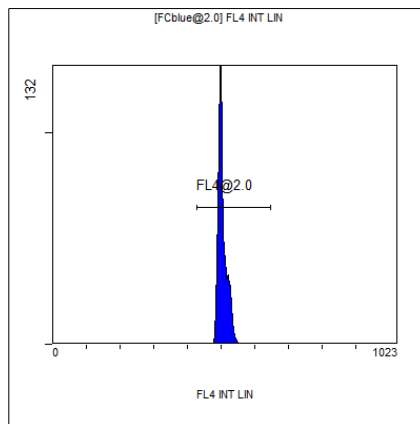
[FCblue@2.0] FL2 INT LIN

Region	Number	HP	X-CV	X-Mean
ALL	3000	1.47	473	
FL2@2.0	2999	1.47	473	



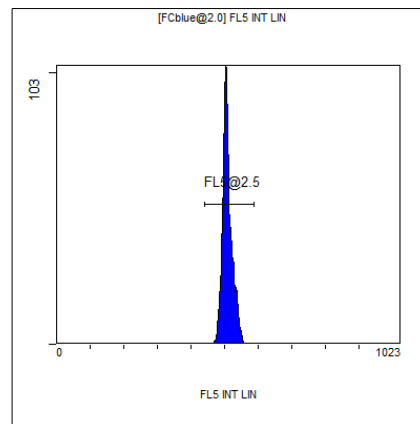
[FCblue@2.0] FL3 INT LIN

Region	Number	HP	X-CV	X-Mean
ALL	3000	1.38	492	
FL3@2.0	2999	1.38	492	



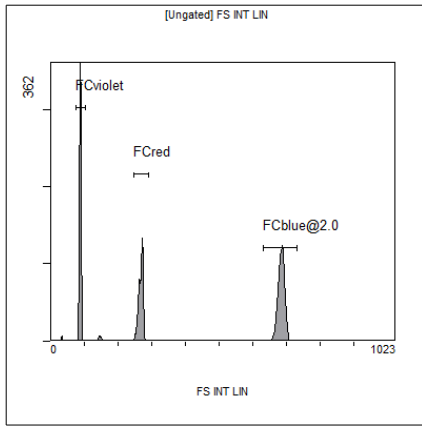
[FCblue@2.0] FL4 INT LIN

Region	Number	HP	X-CV	X-Mean
ALL	3000	1.03	504	
FL4@2.0	2999	1.03	504	



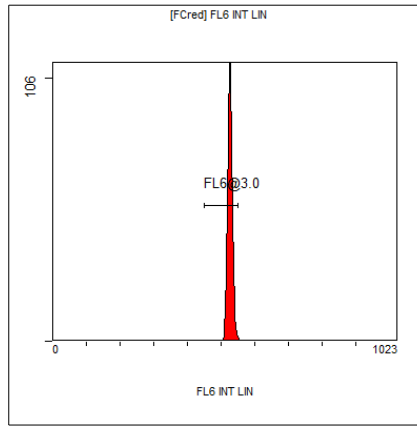
[FCblue@2.0] FL5 INT LIN

Region	Number	HP	X-CV	X-Mean
ALL	3000	1.39	508	
FL5@2.5	2999	1.39	508	



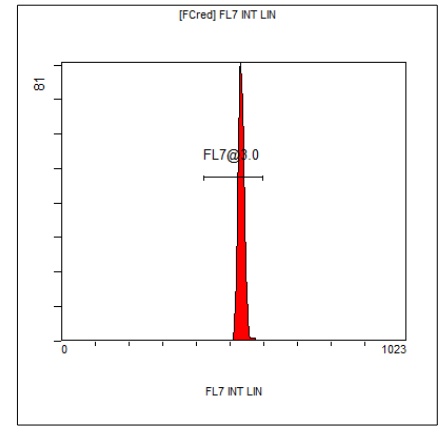
[Ungated] FS INT LIN

Region	Number	HP X-CV	X-Mean
ALL	7668	2.21	378
FCblue@2.0	3000	1.05	684
FCred	1912	1.19	268
FCviolet	2230	2.21	87.4



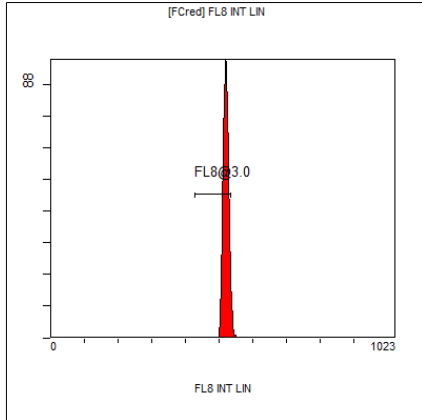
[FCred] FL6 INT LIN

Region	Number	HP X-CV	X-Mean
ALL	1912	1.20	523
FL6@3.0	1868	1.20	526



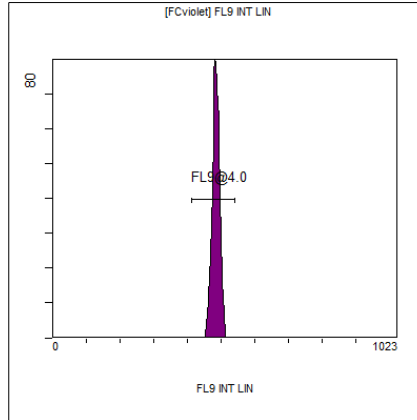
[FCred] FL7 INT LIN

Region	Number	HP X-CV	X-Mean
ALL	1912	1.47	529
FL7@3.0	1900	1.47	533



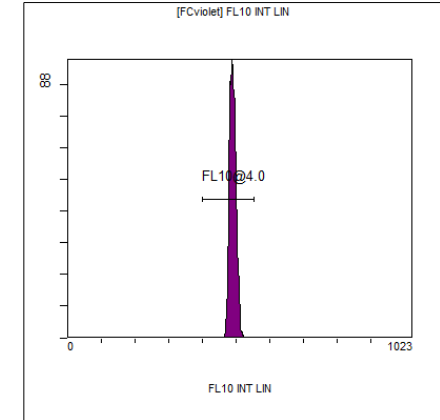
[FCred] FL8 INT LIN

Region	Number	HP X-CV	X-Mean
ALL	1912	1.53	517
FL8@3.0	1758	1.53	519



[FCviolet] FL9 INT LIN

Region	Number	HP X-CV	X-Mean
ALL	2230	1.68	481
FL9@4.0	2213	1.68	484



[FCviolet] FL10 INT LIN

Region	Number	HP X-CV	X-Mean
ALL	2230	1.63	488
FL10@4.0	2217	1.63	490