

Institution: IRB

Protocol :Alignment Blue Red Violet_ALIGN.pro

Listmode Replay: Runtime Protocol

Analysis Date: 09-Jul-2012, 09:00:32

Settings File: Alignment Blue Red Violet_ALIGN.pro, 11-Jun-2012, 09:17:01

Listmode File: Gallios FlowCheck 2012-07-09 001.LMD

Run Date: 09-Jul-12, 08:59:05

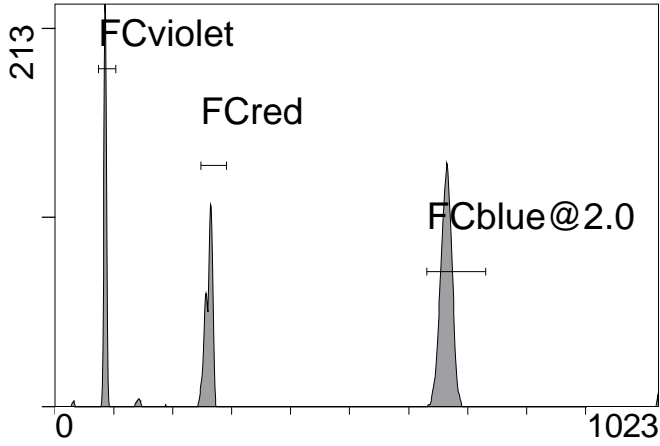
Sample ID: Gallios FlowCheck

User ID: duperray

Acquisition Time/Events: 45.4s / 5945 (PROTOCOL)

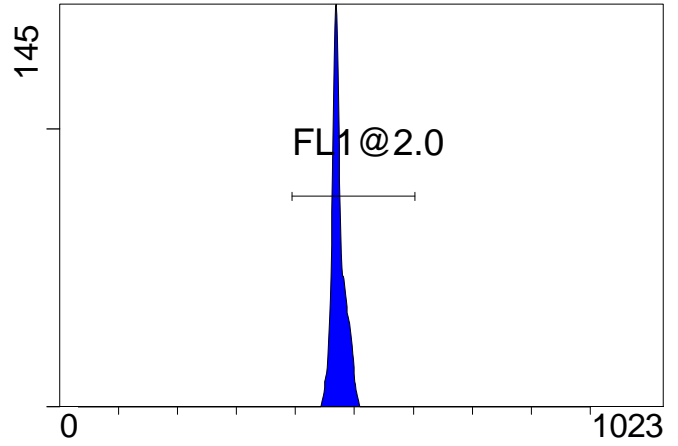
Instrument SN: AN11038 Software Version: Gallios 1.2

[Ungated] FS INT LIN



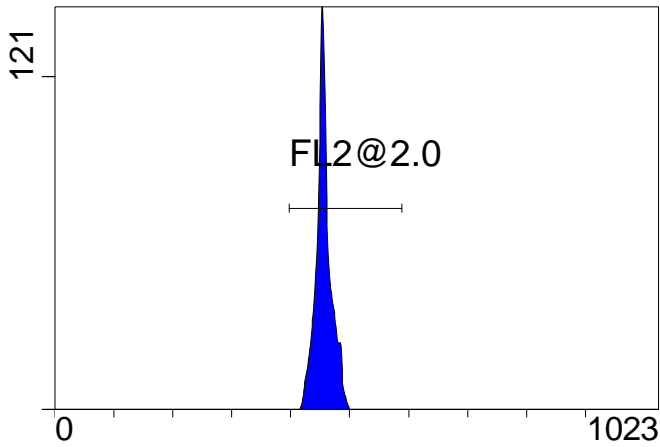
FS INT LIN

(3000) [FCblue@2.0] FL1 INT LIN



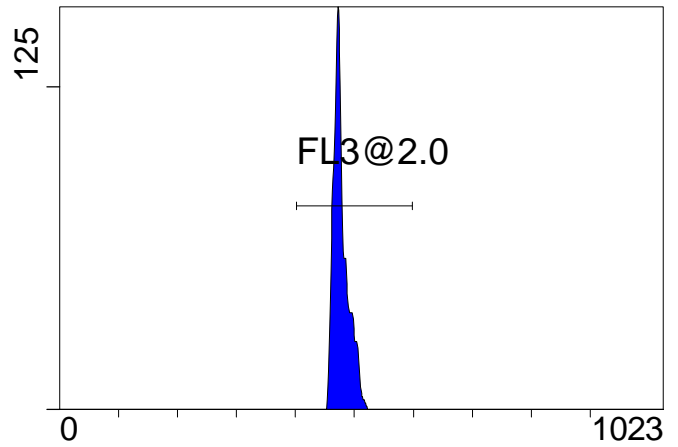
FL1 INT LIN

[FCblue@2.0] FL2 INT LIN



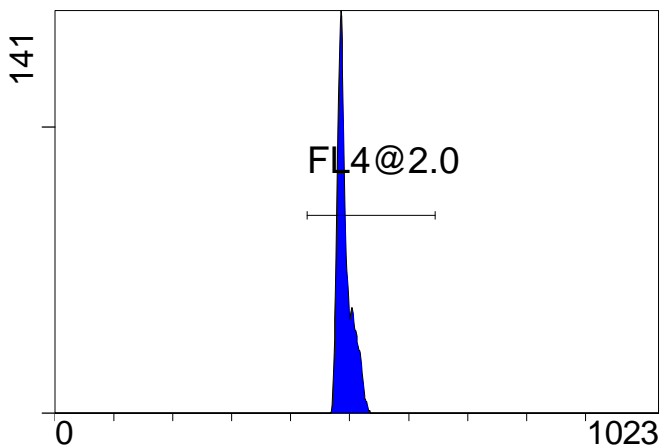
FL2 INT LIN

[FCblue@2.0] FL3 INT LIN



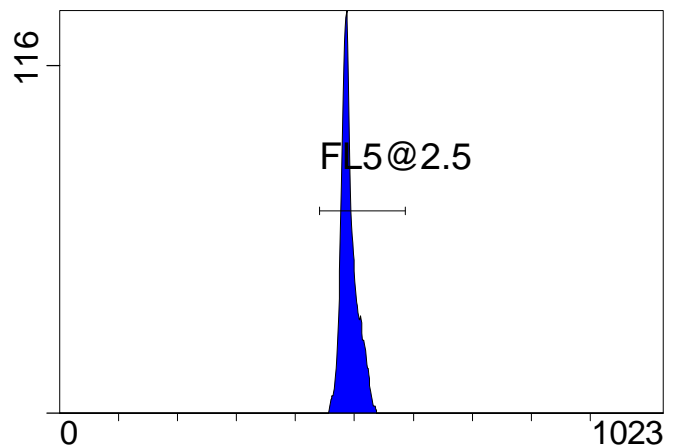
FL3 INT LIN

[FCblue@2.0] FL4 INT LIN



FL4 INT LIN

[FCblue@2.0] FL5 INT LIN



FL5 INT LIN

Institution: IRB

Protocol :Alignment Blue Red Violet_ALIGN.pro

Listmode Replay: Runtime Protocol

Analysis Date: 09-Jul-2012, 09:00:32

Settings File: Alignment Blue Red Violet_ALIGN.pro, 11-Jun-2012, 09:17:01

Listmode File: Gallios FlowCheck 2012-07-09 001.LMD

Run Date: 09-Jul-12, 08:59:05

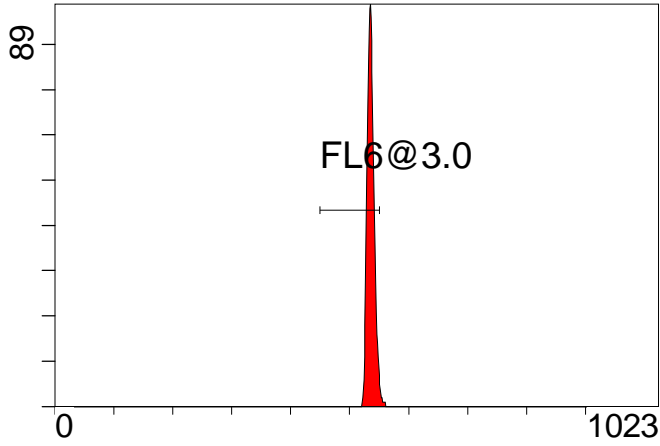
Sample ID: Gallios FlowCheck

User ID: duperray

Acquisition Time/Events: 45.4s / 5945 (PROTOCOL)

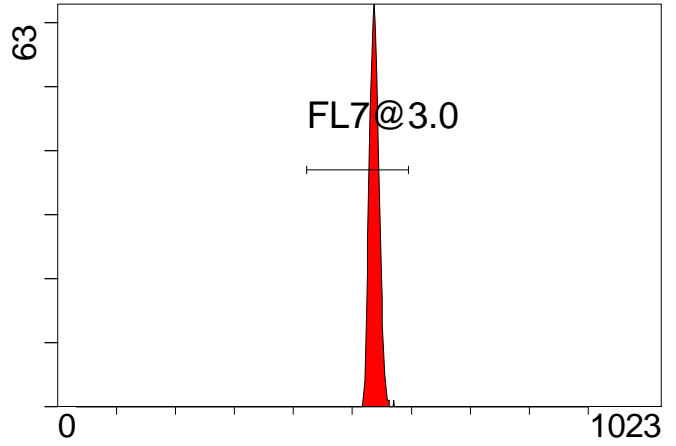
Instrument SN: AN11038 Software Version: Gallios 1.2

[FCred] FL6 INT LIN



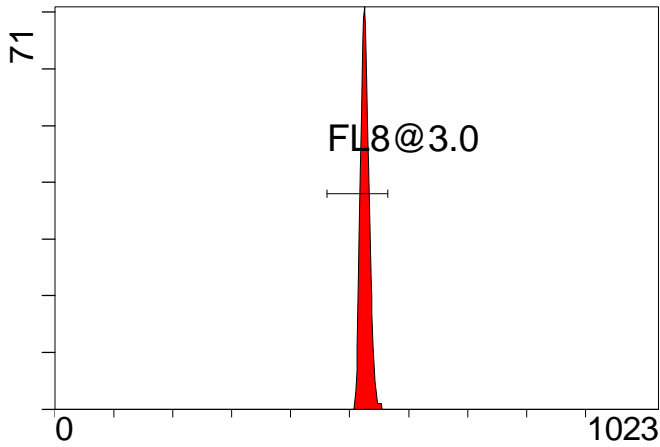
FL6 INT LIN

[FCred] FL7 INT LIN



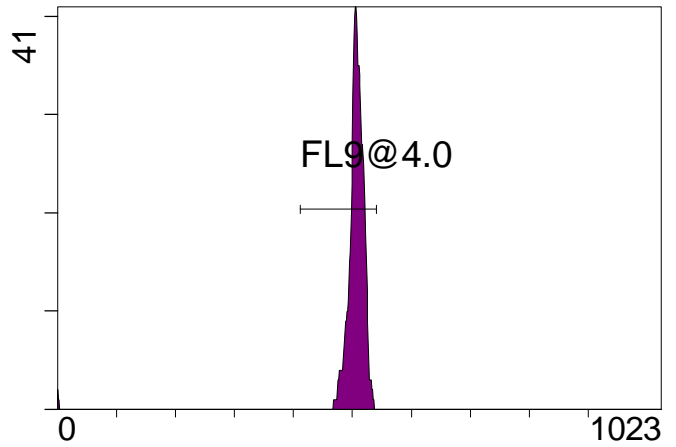
FL7 INT LIN

[FCred] FL8 INT LIN



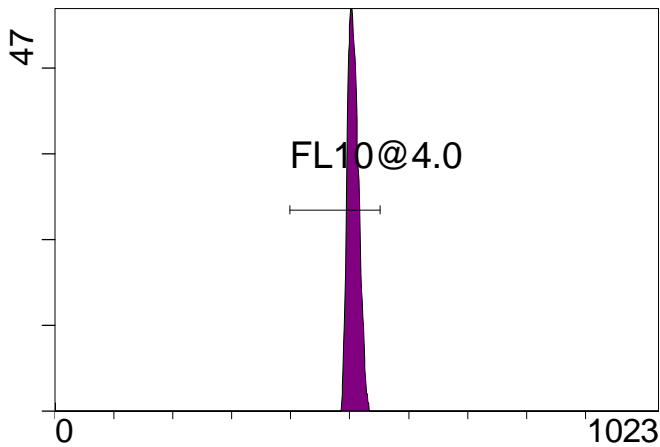
FL8 INT LIN

[FCviolet] FL9 INT LIN



FL9 INT LIN

[FCviolet] FL10 INT LIN



FL10 INT LIN

Statistical Analysis

PROGRAM INFORMATION

File:- Gallios FlowCheck 2012-07-09 001.LMD

Gate:- FCblue@2.0 [FCblue@2.0]

Compensation:-

Region	Number	X-Mean	X-HPCV
ALL	3000	473	1.00
ALL	3000	492	1.32
ALL	3000	492	1.05
ALL	3000	478	1.26
ALL	3000	456	1.26
FL1@2.0	2999	473	1.00
FL2@2.0	2998	456	1.26
FL3@2.0	2999	478	1.26
FL4@2.0	2998	492	1.05
FL5@2.5	2998	492	1.32

File:- Gallios FlowCheck 2012-07-09 001.LMD

Gate:- FCred [FCred]

Compensation:-

Region	Number	X-Mean	X-HPCV
ALL	1350	525	1.30
ALL	1350	535	0.90
ALL	1350	537	1.32
FL6@3.0	1290	535	0.90
FL7@3.0	1347	538	1.32
FL8@3.0	1339	526	1.30

File:- Gallios FlowCheck 2012-07-09 001.LMD

Gate:- FCviolet [FCviolet]

Compensation:-

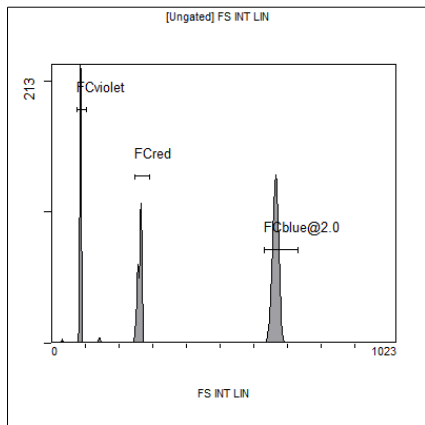
Region	Number	X-Mean	X-HPCV
ALL	1185	500	1.46
ALL	1185	501	1.53
FL10@4.0	1173	506	1.53
FL9@4.0	1169	506	1.46

File:- Gallios FlowCheck 2012-07-09 001.LMD

Gate:- Ungated

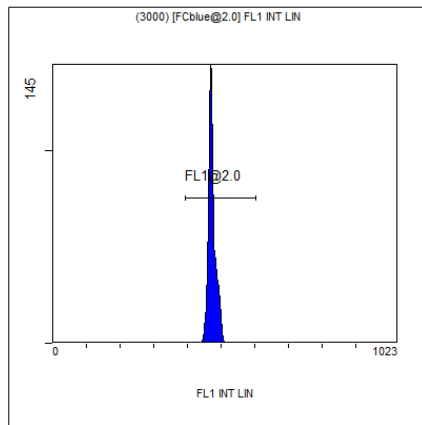
Compensation:-

Region	Number	X-Mean	X-HPCV
ALL	5945	434	1.74
FCblue@2.0	3000	664	1.17
FCred	1350	261	0.98
FCviolet	1185	85.2	1.74



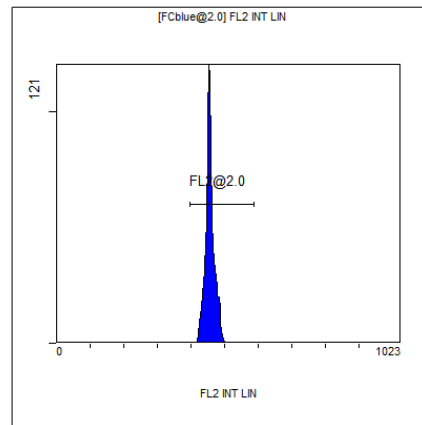
[Ungated] FS INT LIN

Region	Number	HP	X-CV	X-Mean
ALL	5945	1.74		434
FCblue@2.0	3000	1.17		664
FCred	1350	0.98		261
FCviolet	1185	1.74		85.2



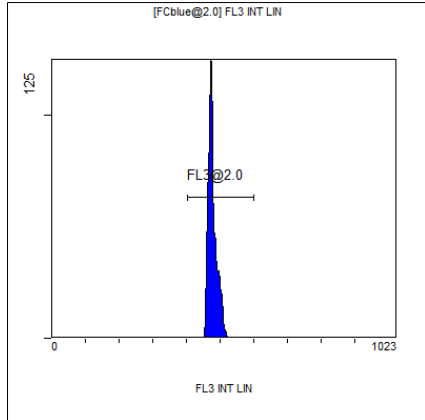
(3000) [FCblue@2.0] FL1 INT LIN

Region	Number	HP	X-CV	X-Mean
ALL	3000	1.00		473
FL1@2.0	2999	1.00		473



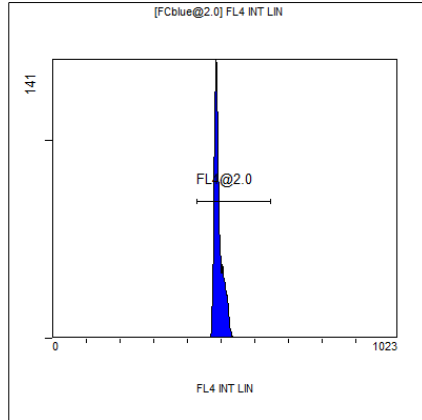
[FCblue@2.0] FL2 INT LIN

Region	Number	HP	X-CV	X-Mean
ALL	3000	1.26		456
FL2@2.0	2998	1.26		456



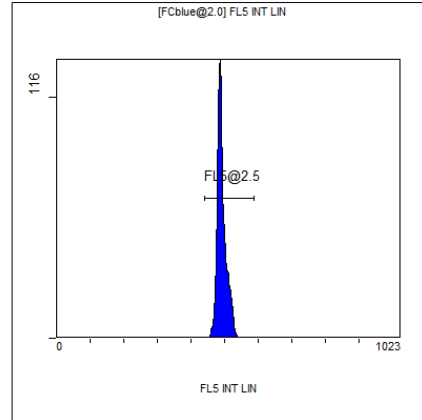
[FCblue@2.0] FL3 INT LIN

Region	Number	HP	X-CV	X-Mean
ALL	3000	1.26		478
FL3@2.0	2999	1.26		478



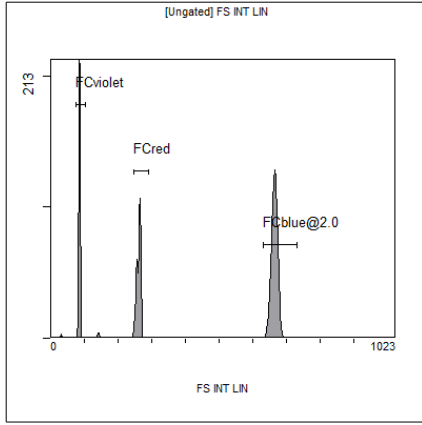
[FCblue@2.0] FL4 INT LIN

Region	Number	HP	X-CV	X-Mean
ALL	3000	1.05		492
FL4@2.0	2998	1.05		492



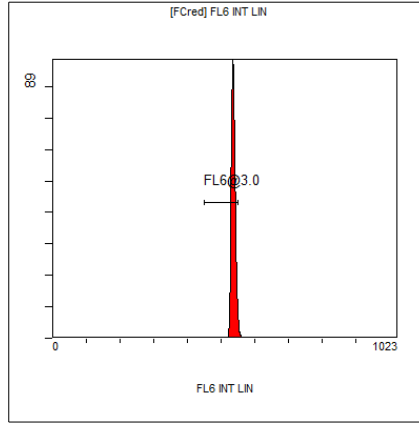
[FCblue@2.0] FL5 INT LIN

Region	Number	HP	X-CV	X-Mean
ALL	3000	1.32		492
FL5@2.5	2998	1.32		492



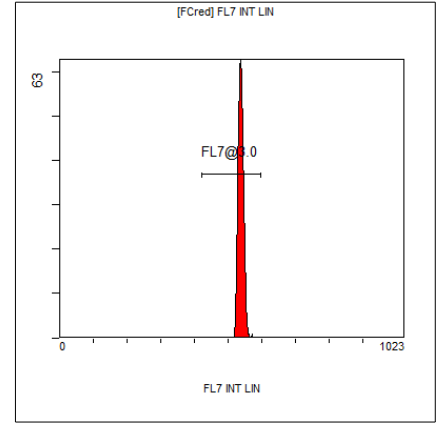
[Ungated] FS INT LIN

Region	Number	HP X-CV	X-Mean
ALL	5945	1.74	434
FCblue@2.0	3000	1.17	664
FCred	1350	0.98	261
FCviolet	1185	1.74	85.2



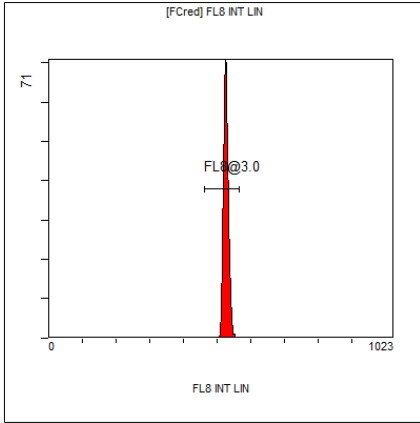
[FCred] FL6 INT LIN

Region	Number	HP X-CV	X-Mean
ALL	1350	0.90	535
FL6@3.0	1290	0.90	535



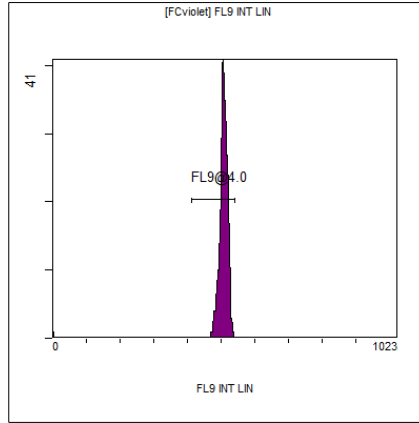
[FCred] FL7 INT LIN

Region	Number	HP X-CV	X-Mean
ALL	1350	1.32	537
FL7@3.0	1347	1.32	538



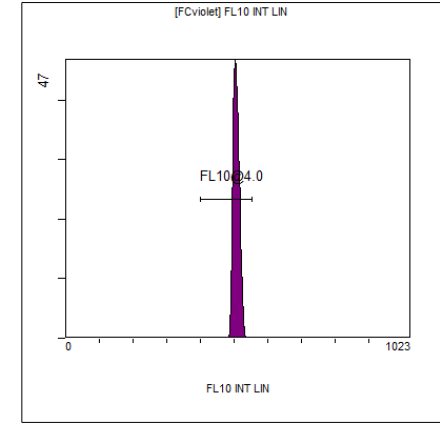
[FCred] FL8 INT LIN

Region	Number	HP X-CV	X-Mean
ALL	1350	1.30	525
FL8@3.0	1339	1.30	526



[FCviolet] FL9 INT LIN

Region	Number	HP X-CV	X-Mean
ALL	1185	1.46	500
FL9@4.0	1169	1.46	506



[FCviolet] FL10 INT LIN

Region	Number	HP X-CV	X-Mean
ALL	1185	1.53	501
FL10@4.0	1173	1.53	506